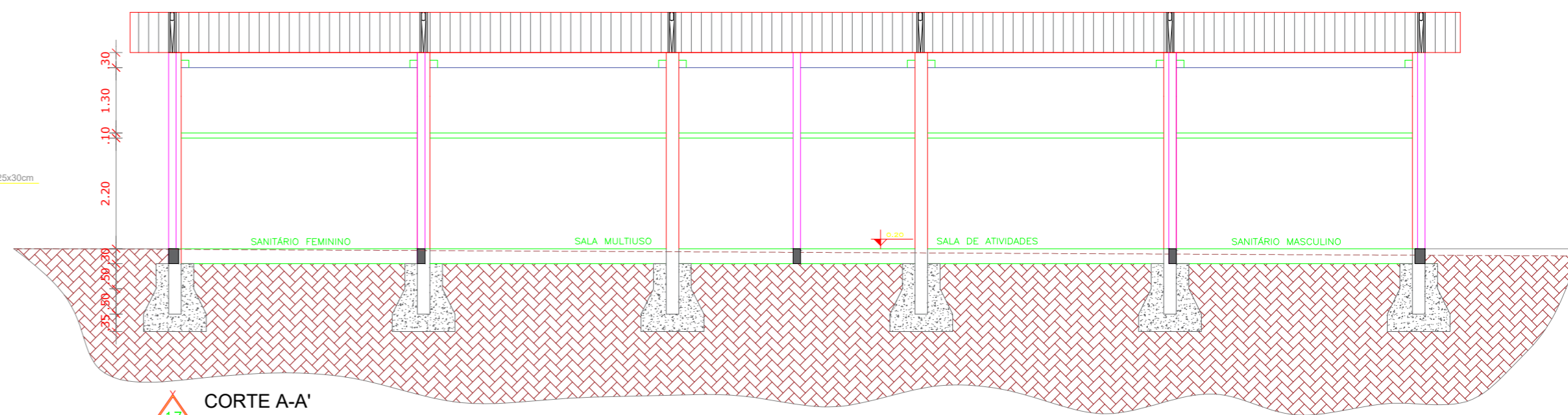
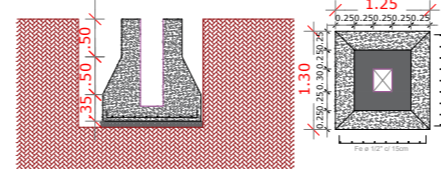
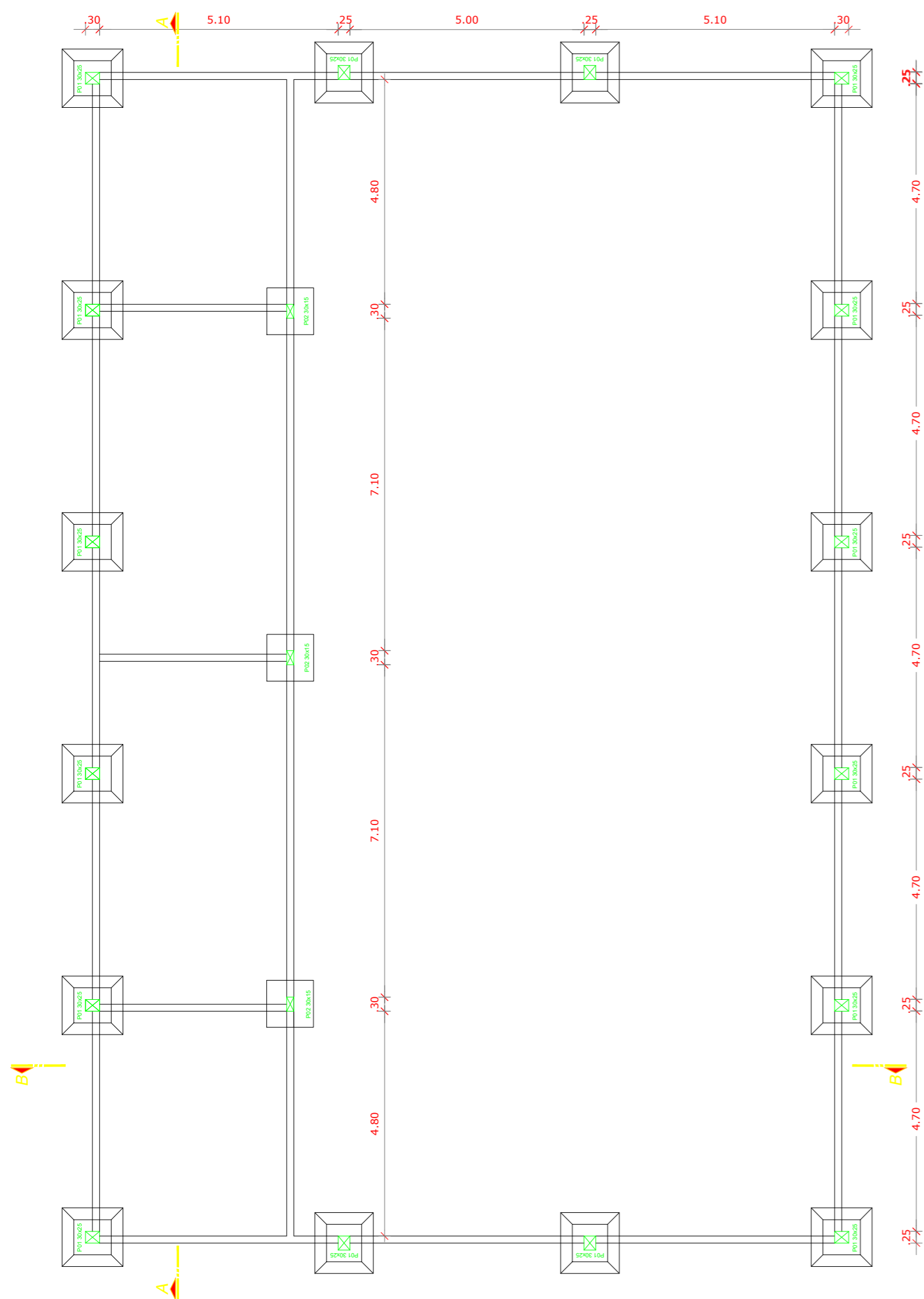


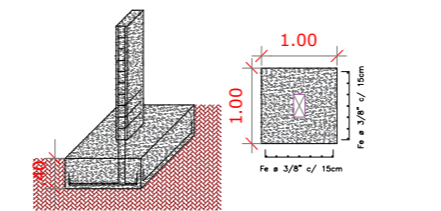
**CORTE B-B'**  
ESCALA: 1/75



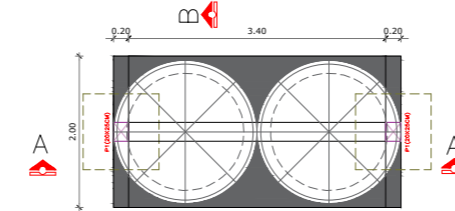
**CORTE A-A'**  
ESCALA: 1/75



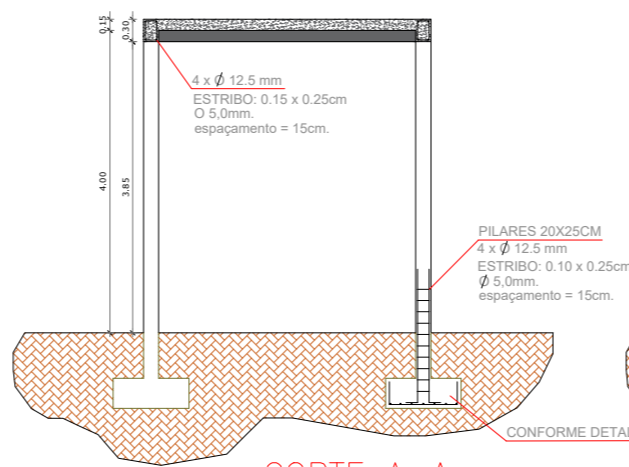
**18** DETALHE VIGA AMARRAÇÃO  
MOLDADA IN LOCO  
ESCALA: S/ ESCALA



**19** DETALHE SAPATAS  
ESCALA: 1/100

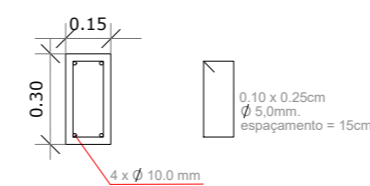


**22** DETALHE ESTRUTURA P/ CAIXA D'ÁGUA  
ESCALA: 1/100



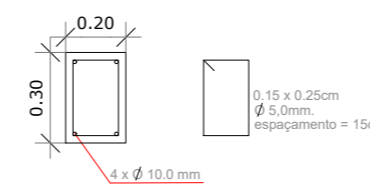
**23** DETALHE FUNDAÇÃO  
NIVELAMENTO E BALDRAME  
ESCALA: S/ ESCALA

**CORTE ESTRIBO**



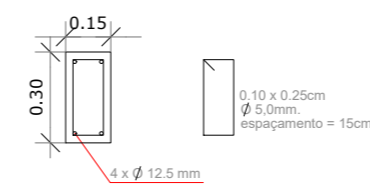
**20** DETALHE VIGA BALDRAME  
ESCALA: S/ ESCALA

**CORTE ESTRIBO**



**21** DETALHE PILAR (15X30CM)  
ESCALA: S/ ESCALA

**CORTE ESTRIBO**



**22** DETALHE ESTRUTURA P/ CAIXA D'ÁGUA  
ESCALA: 1/100

**21** DETALHE PILAR (15X30CM)  
ESCALA: S/ ESCALA

**CORTE A-A**

**CORTE B-B**



PREFEITURA MUNICIPAL DE ALPESTRE

PRAÇA TANCREDO NEVES, Nº 300  
CENTRO - ALPESTRE/RS  
CEP: 98.480-000  
TELEFONE: (55) 3796 1166

OBRA: INFRAESTRUTURA ESPORTIVA, RECREATIVA E DE LAZER

LOCAL: VILA SANGA LEONARDO - ALPESTRE/RS

ASSUNTO: PLANTA BAIXA / DETALHES

PROJETO: ESTRUTURAL

PROPRIETÁRIO(A):  
RUDIMAR ARGENTON  
CNPJ: 87.612.933/0001-18

VISTO:

RESP. TÉCNICO:  
ELOUISE RODRIGUES MULLER  
ENGENHEIRA CIVIL  
CREA RS213035

VISTO:

ÁREA:  
400,00m<sup>2</sup>

ESCALA:  
1/75

DATA:  
MAIO/2018

PRANCHA:  
07/07

FOLHA:  
A2