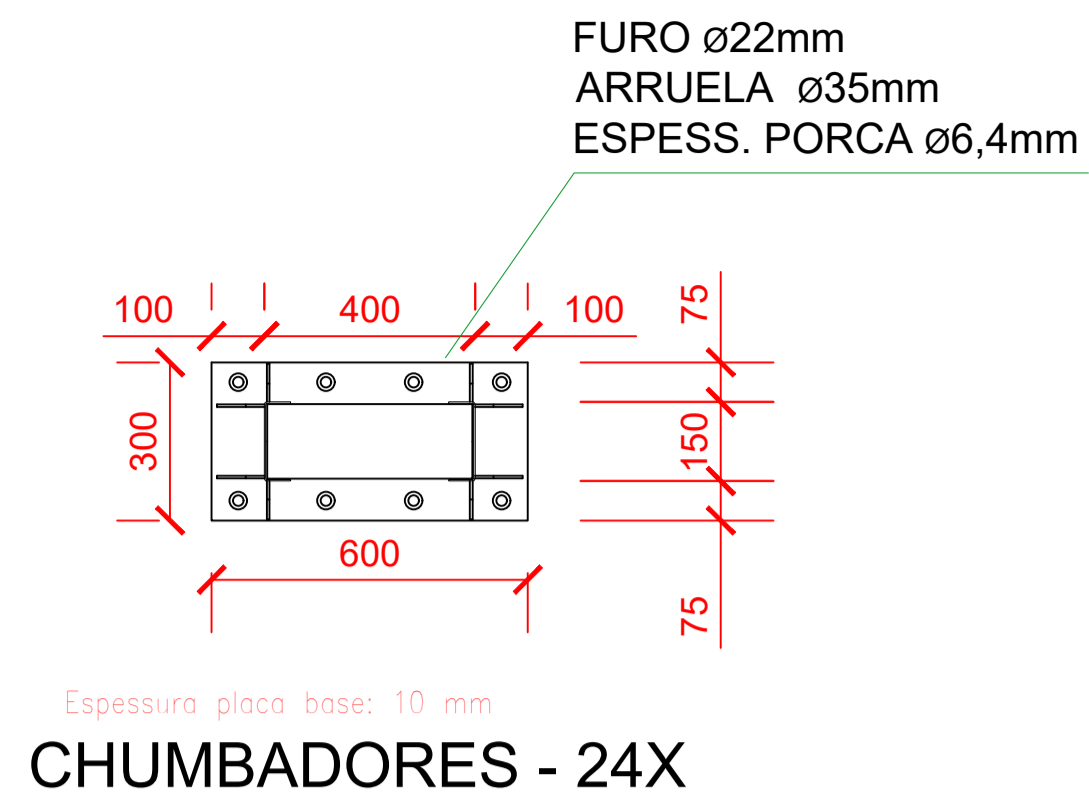
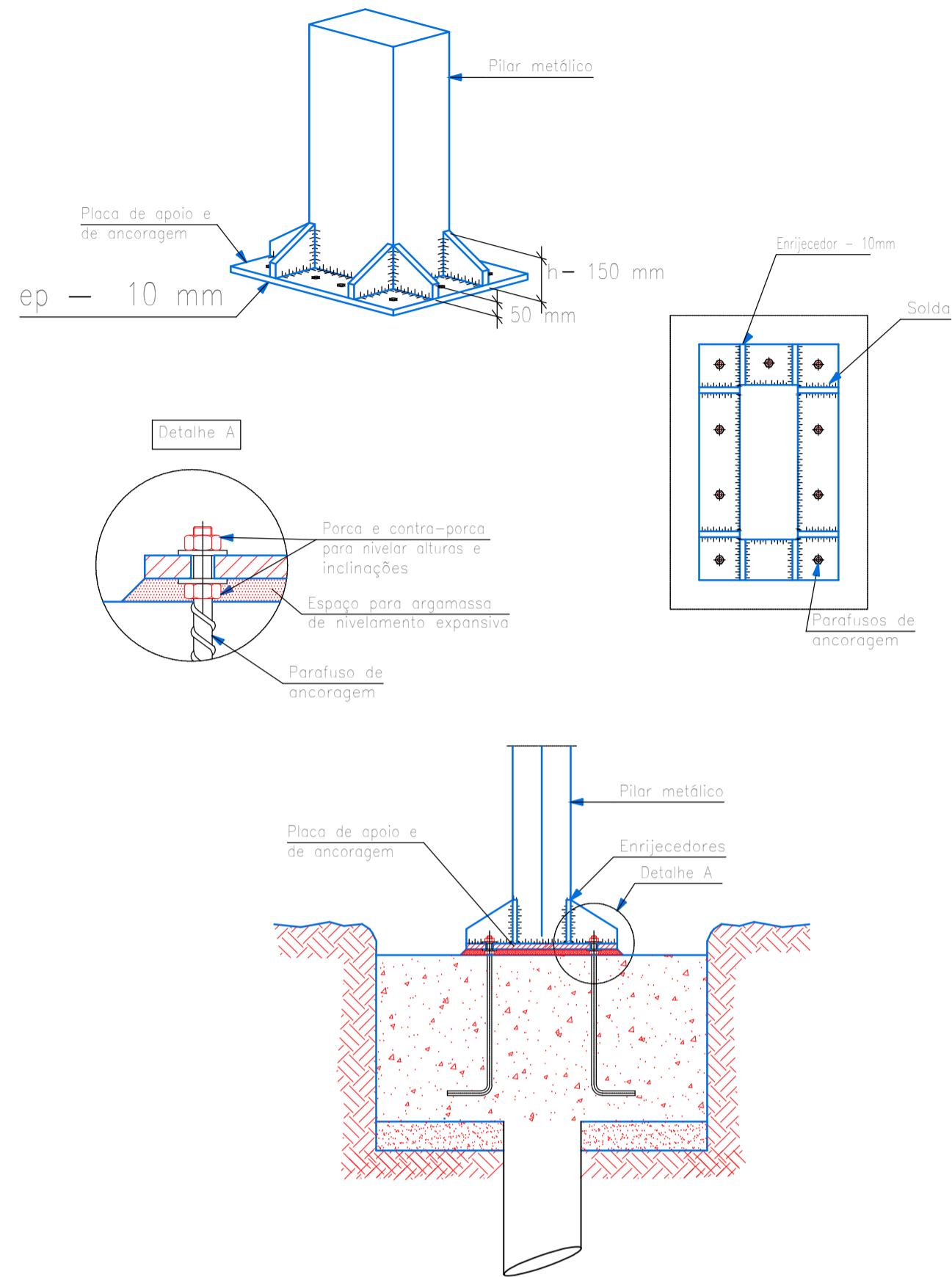
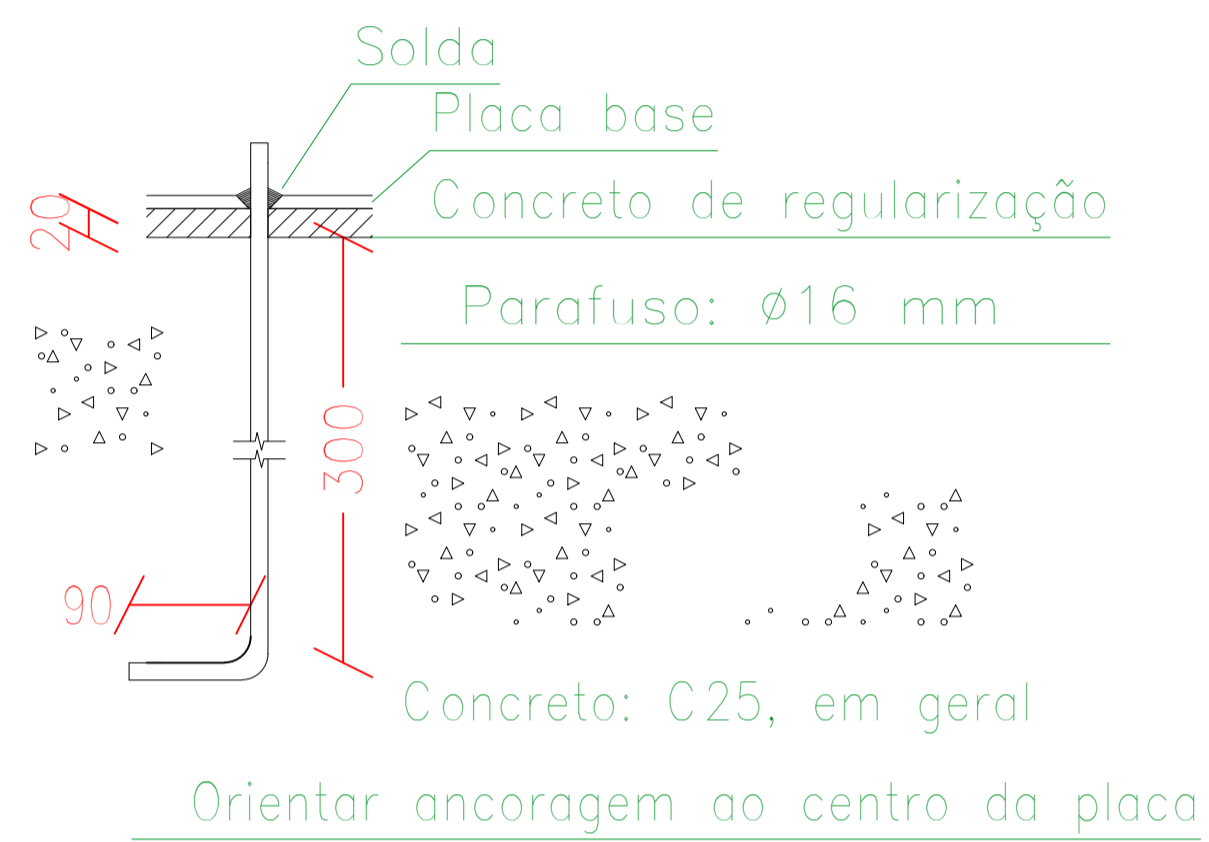


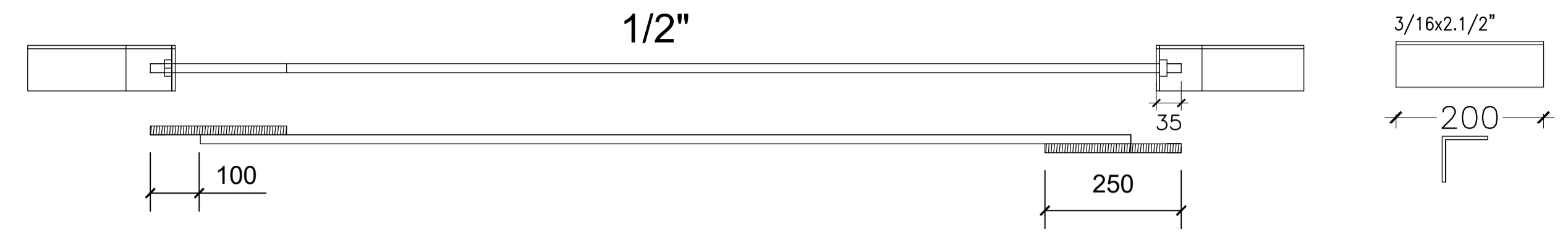
Arranque de pilar na fundação.
 União semi-rígida.



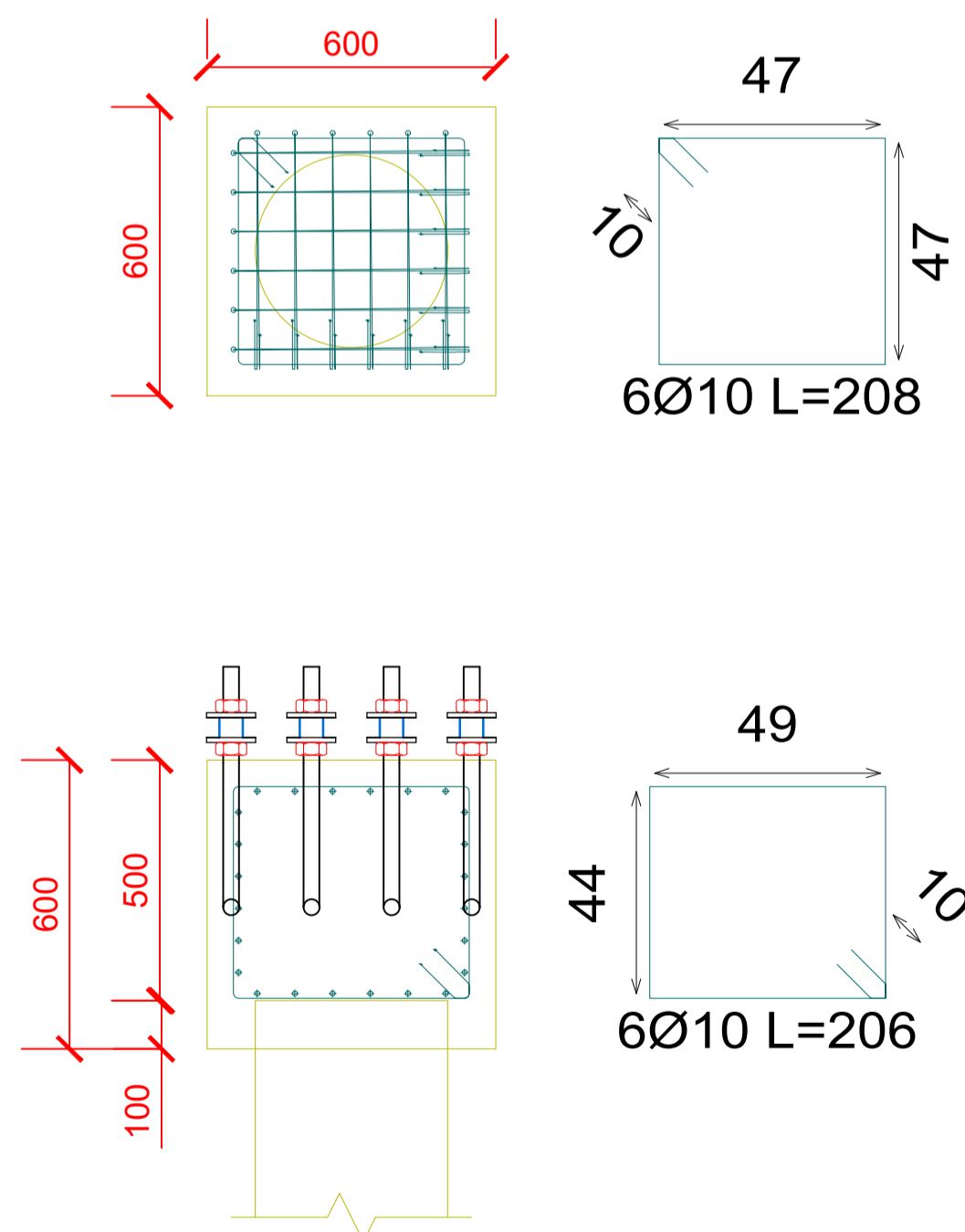
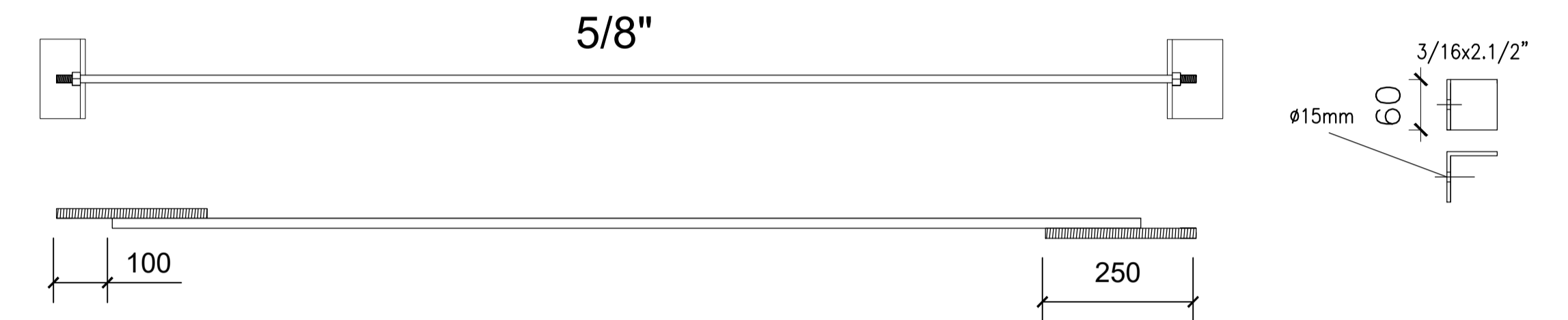
Detalhe Ancoragem Parafuso



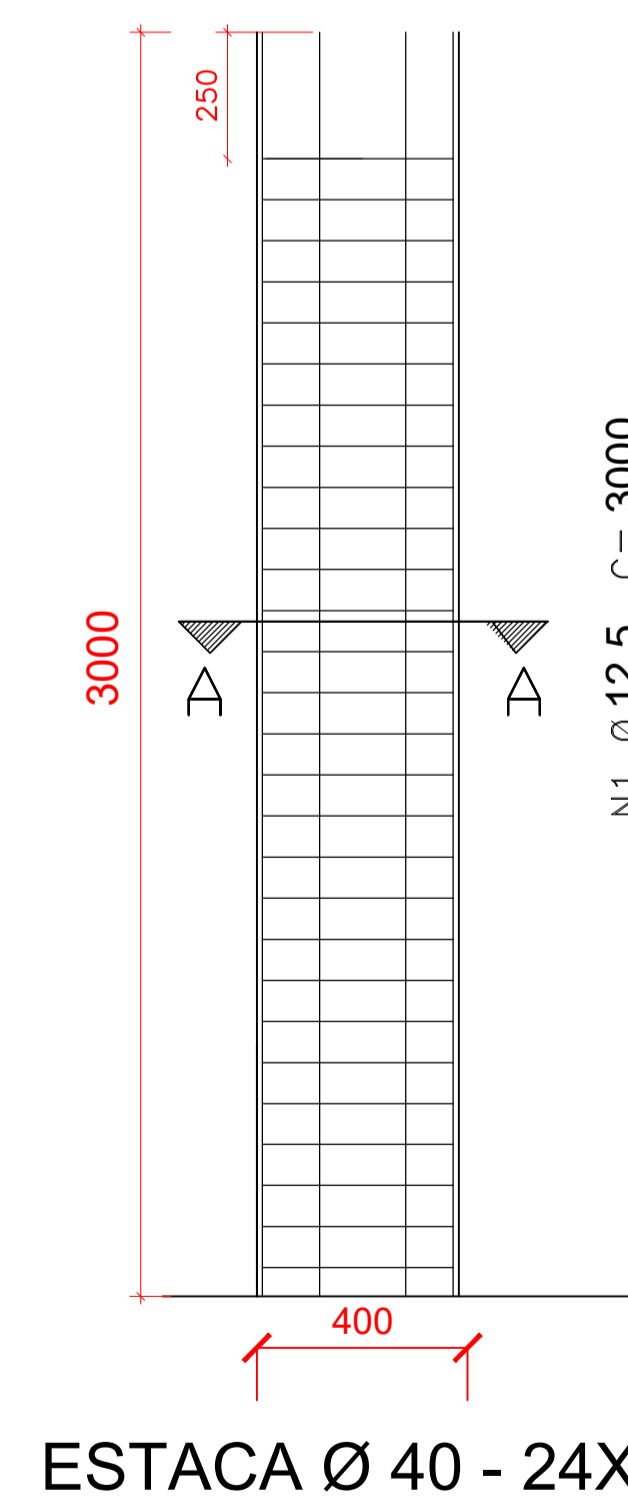
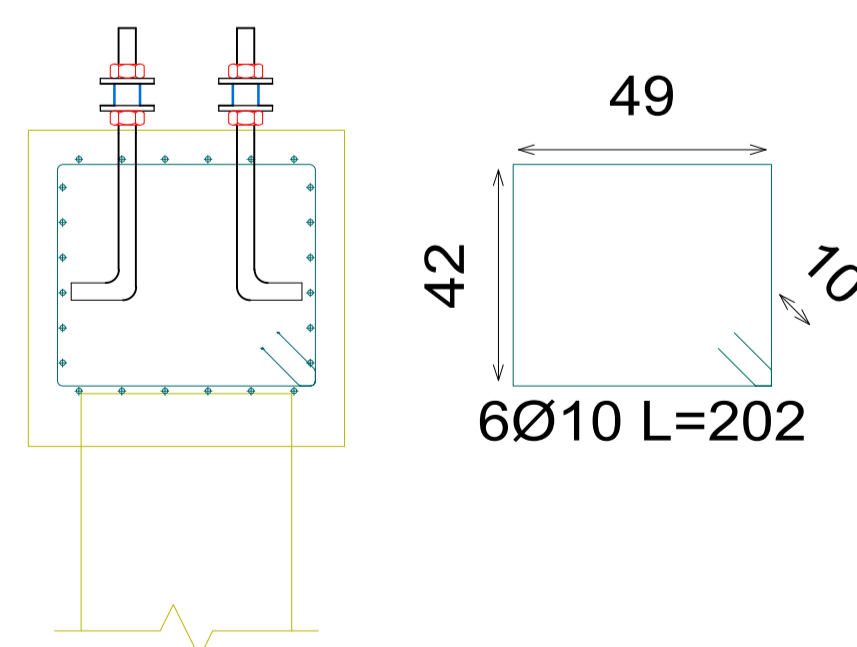
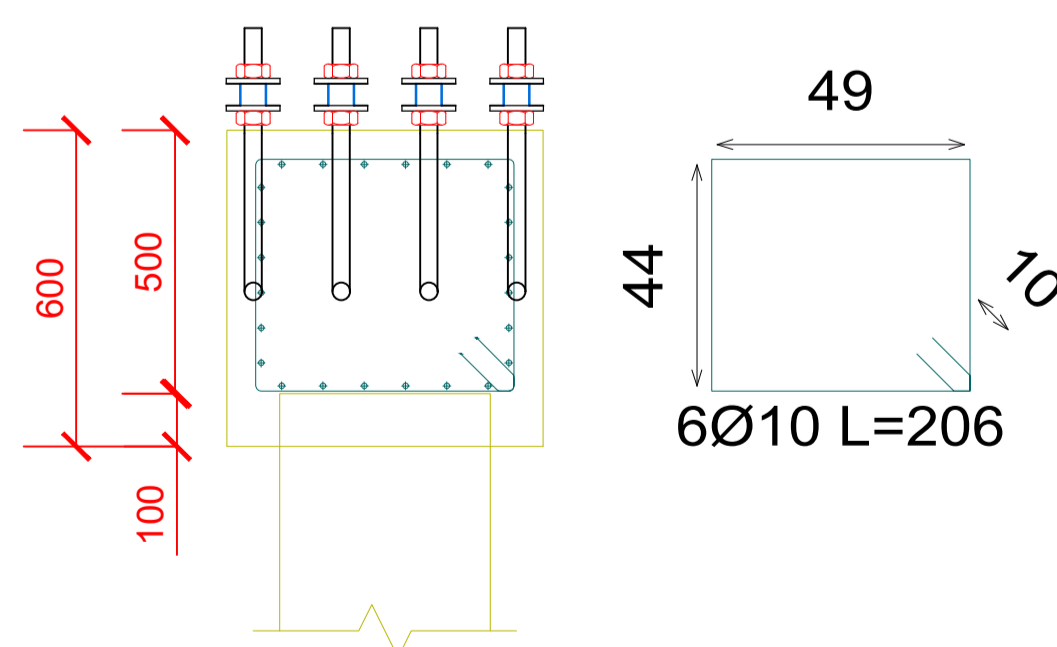
CONTRAVENTAMENTO - BANZO SUPERIOR



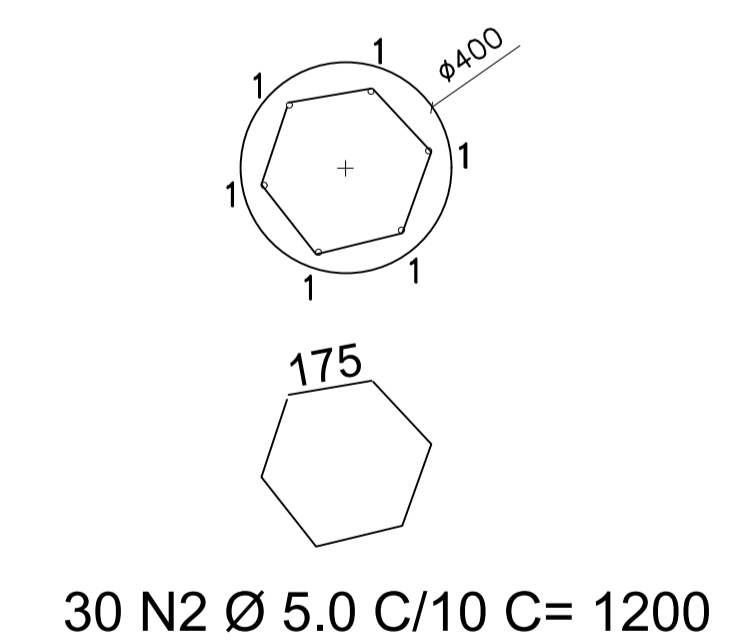
BANZO SUPERIOR - ESTABILIZADOR



BLOCOS DE COROAMENTO - 24X



ESTACA Ø 40 - 24X



Projeto de Implantação da Rua Coberta do Município de Alto Alegre / RS
 PROJETO ESTRUTURAL
 Responsável Técnico: Calebe Pedroso Horbach - CREA/RS 243.486
 Requerente: Município de Alto Alegre