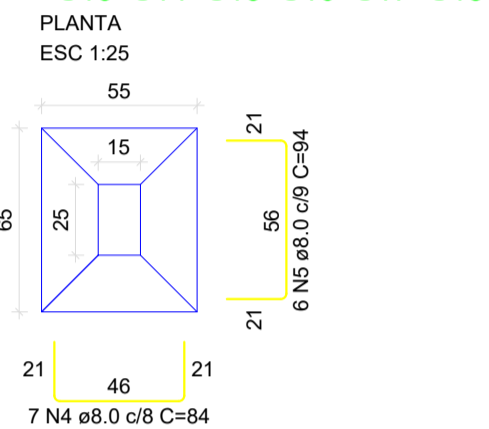
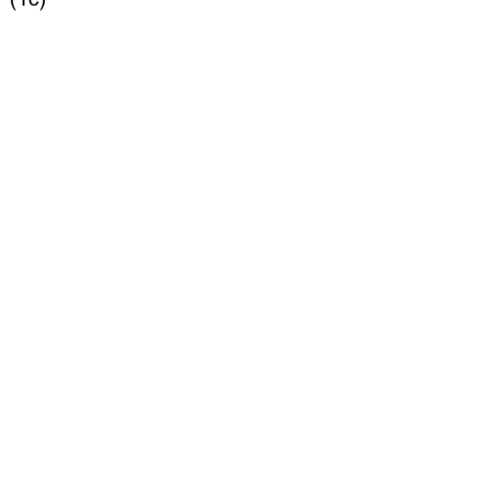
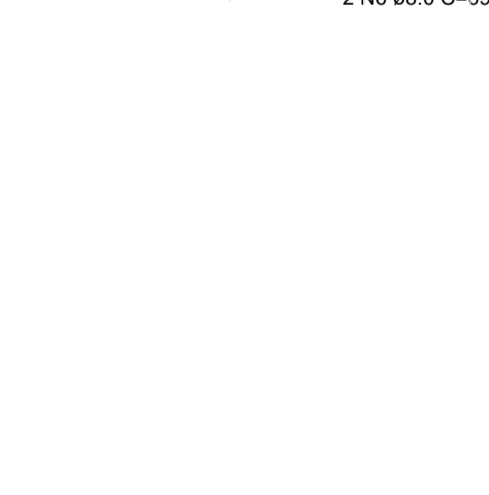
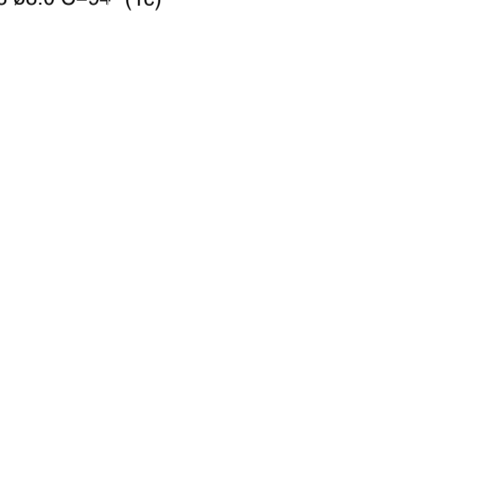
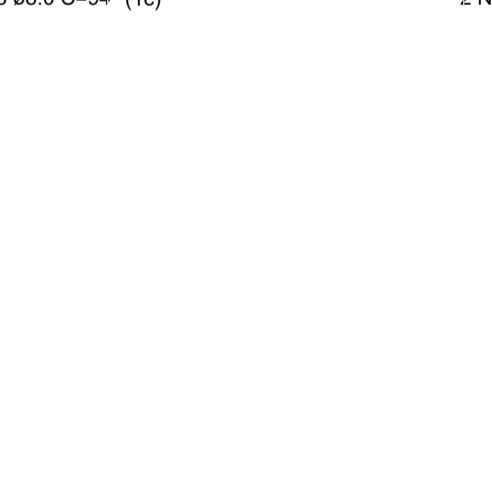
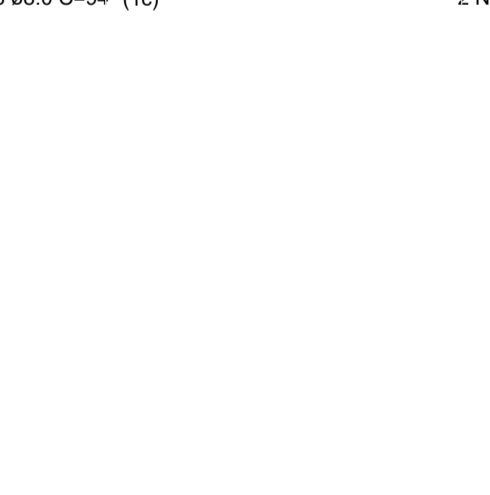
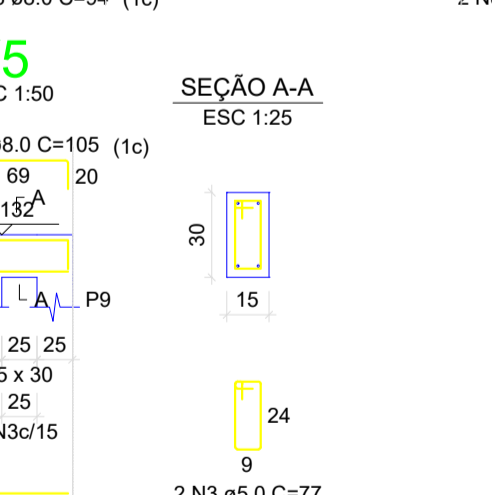
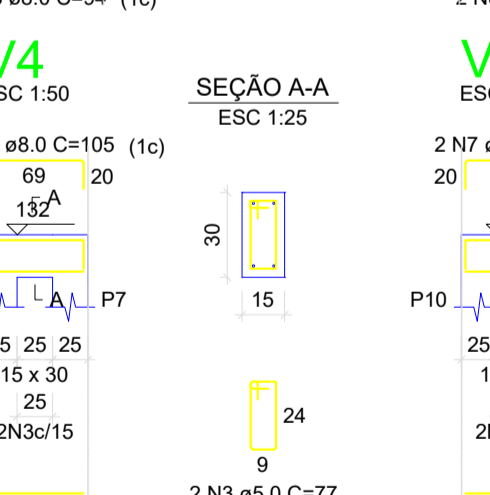
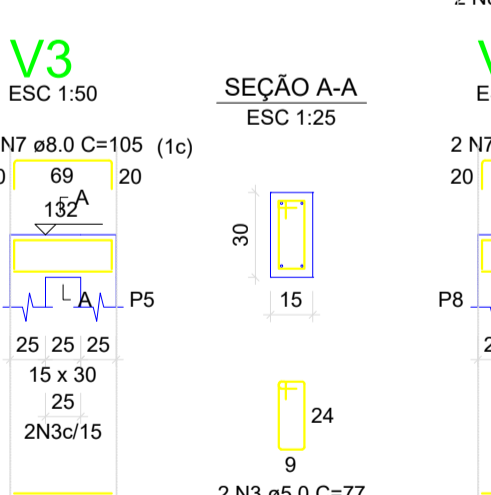
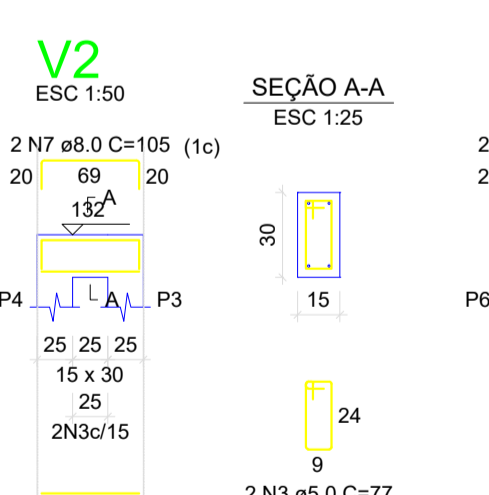
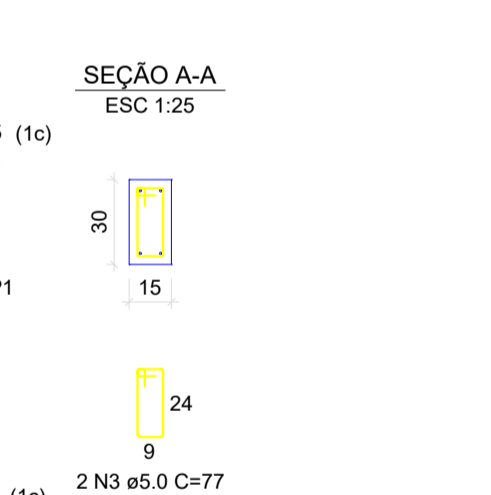
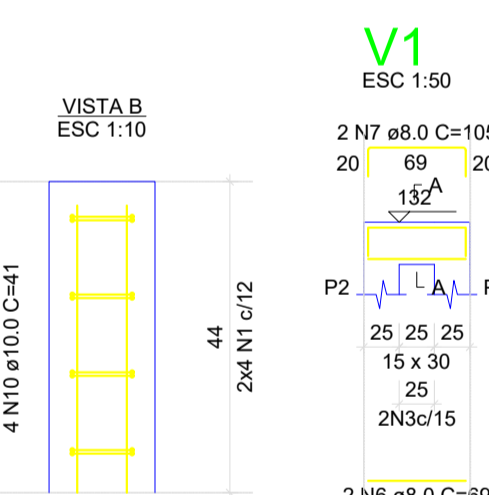
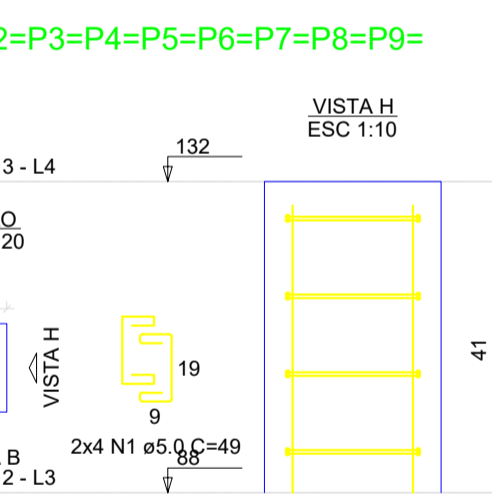
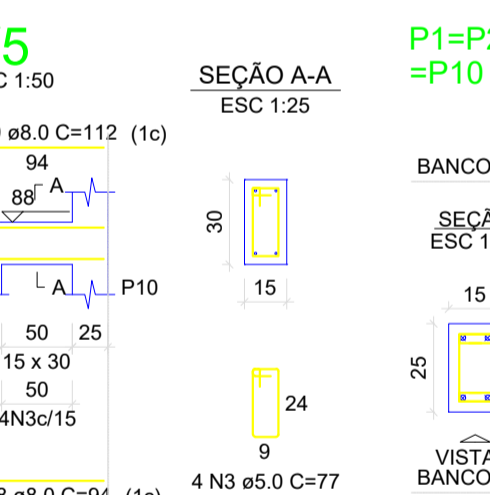
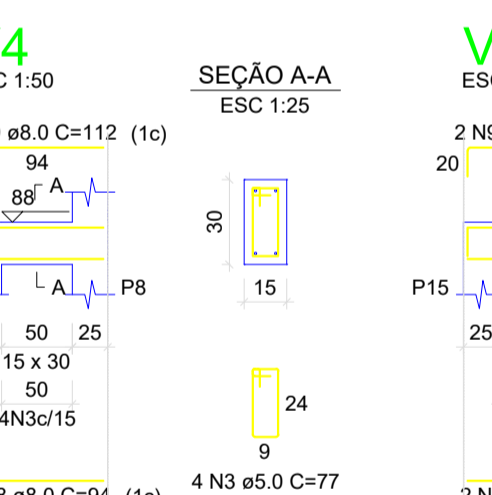
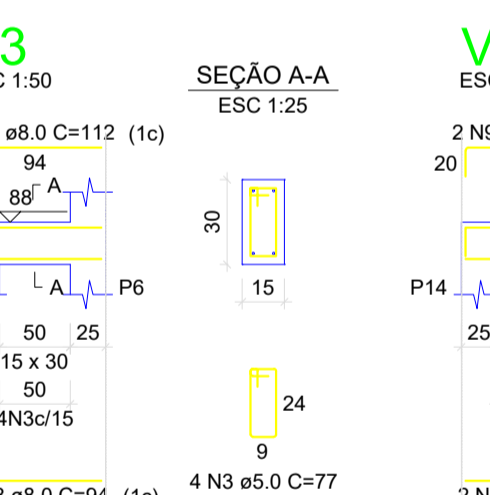
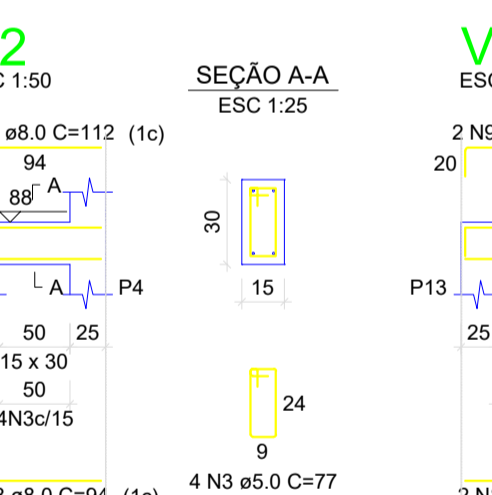
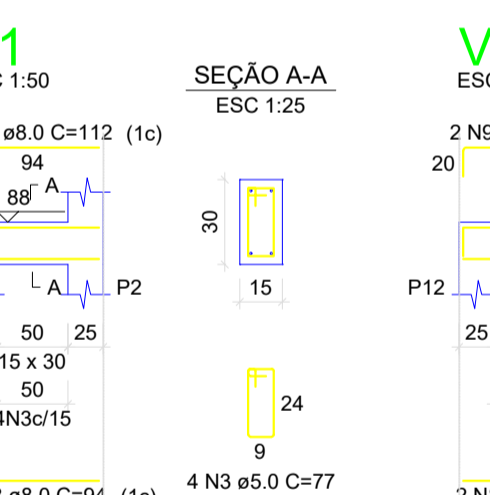
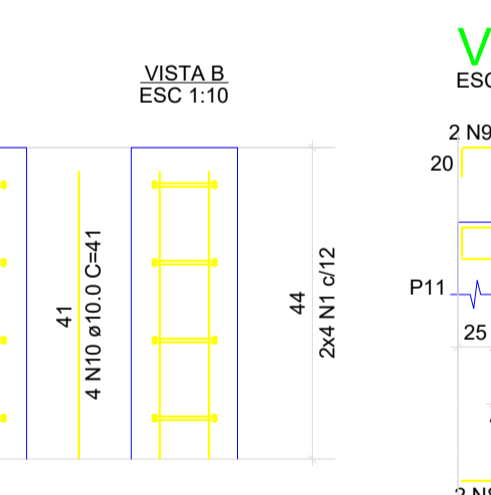
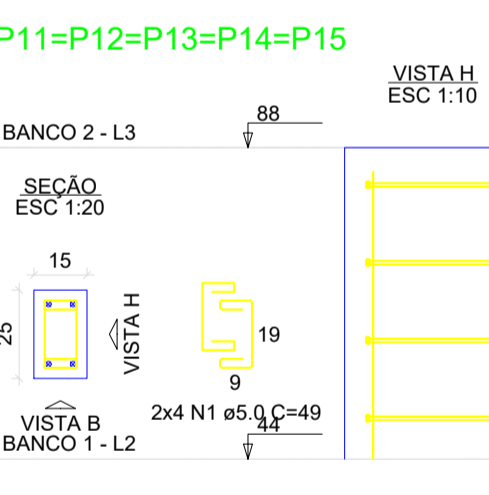
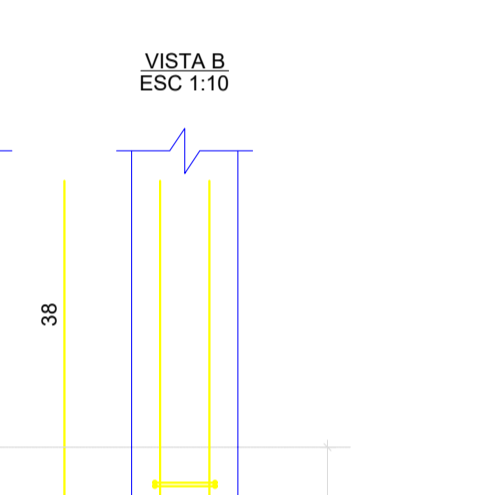
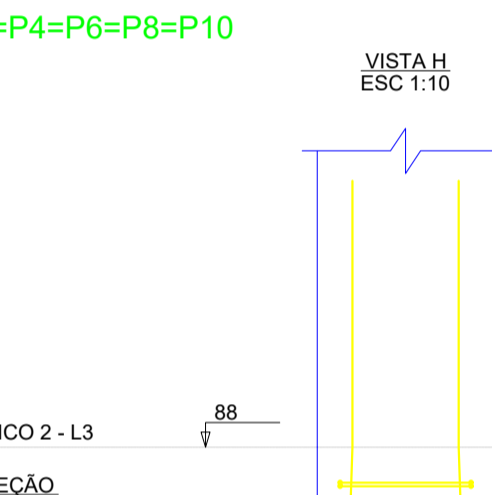
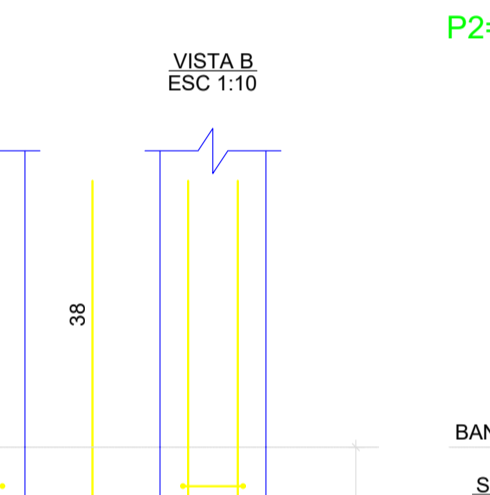
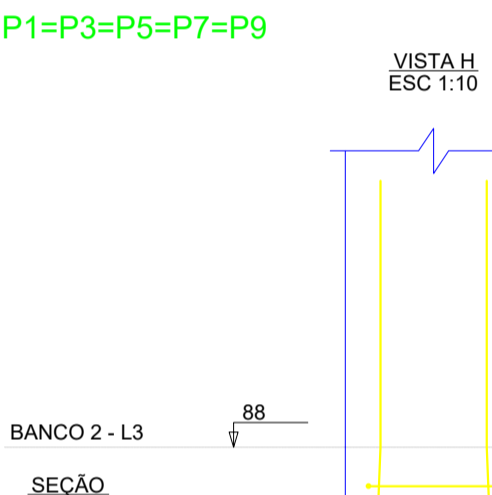
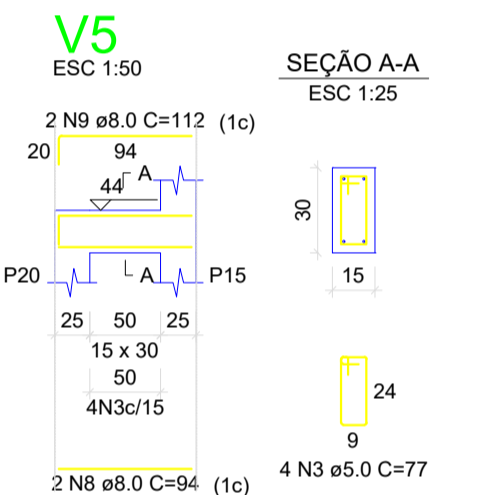
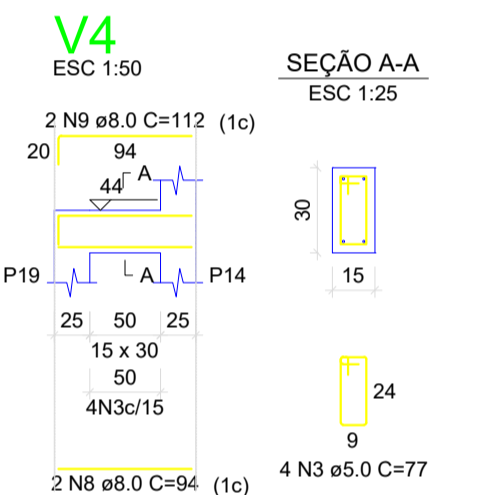
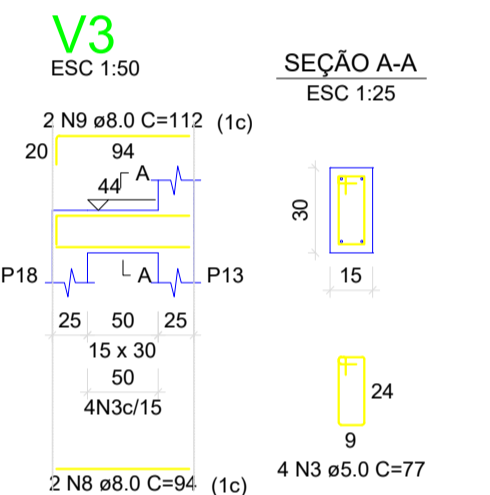
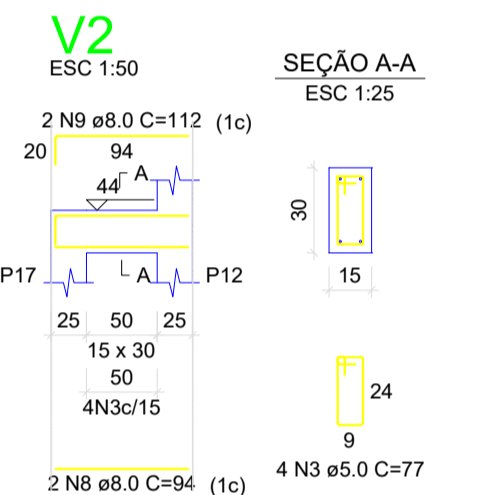
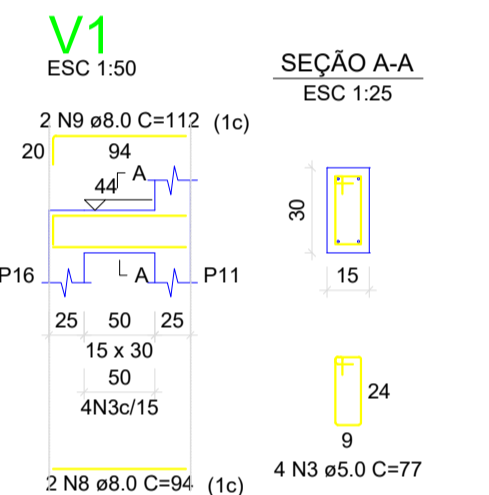


S1=S2=S3=S4=S5=S6=S7=S8=S9=S10=S11=S12=S13=S14=S15=S16=S17=S18=S19=S20



Solo com capacidade de suporte > 1.50 kgf/cm²
Solo compactado sobre sapata
peso específico > 1600.00 kg/m³



P1=P2=P3=P4=P5=P6=P7=P8=
=P9=P10=P11=P12=P13=P14=
=P15=P16=P17=P18=P19=
=P20

P1=P2=P3=P4=P5=P6=P7=P8=
=P9=P10


P11=P12=P13=P14=P15

P16=P17=P18=P19=P20

RESUMO DO AÇO

AÇO	DIAM (mm)	C.TOTAL (m)	QUANT + 10% (Barras)	UNIT	PESO + 10% (kg)
CA50	8.0	289	27	12 m	125.4
CA60	10.0	136.4	19	12 m	133.2
CA60	5.0	263.3	-	rolo (170 kg)	44.6

PESO TOTAL (kg)
CA50 258.6
CA60 44.6
Volume de concreto (C-25) = 3.58 m³
Área de forma = 35.23 m²



PREFEITURA MUNICIPAL DE CAMPOS BORGES

OBRA: MODERNIZAÇÃO DO GINÁSIO MUNICIPAL DE ESPORTES
LOCALIDADE: Centro - Campos Borges-RS

PROPRIETÁRIO	DATA	PRANCHA
PREFEITA MUNICIPAL CLEONICE P. DA PAIXÃO TOLEDO	02 / 05 / 2024	
RESP. TÉCNICO	ESCALA	07
ENGENHEIRO CIVIL CLEITON ZANATTA Crea RS 238059	INDICADA	
DESIGNAÇÃO: ESTRUTURA ARQUIBANCADA		