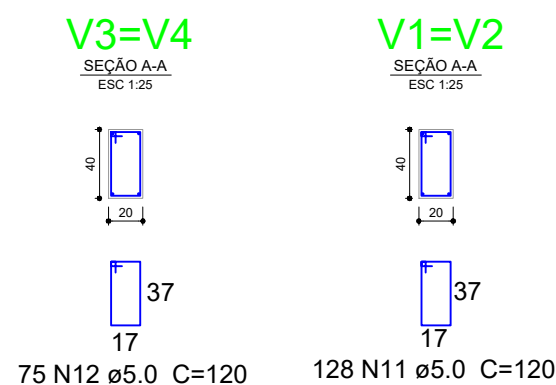
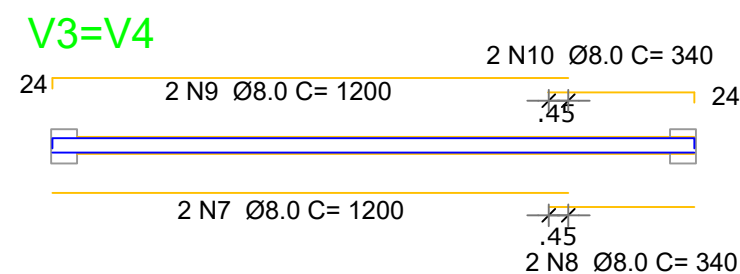
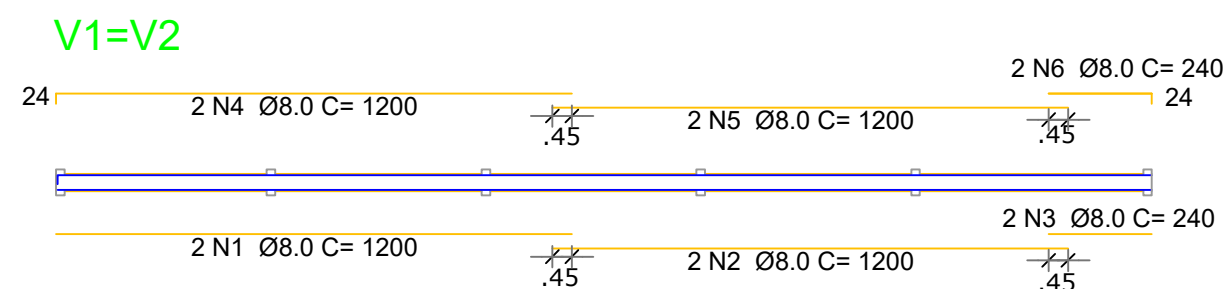
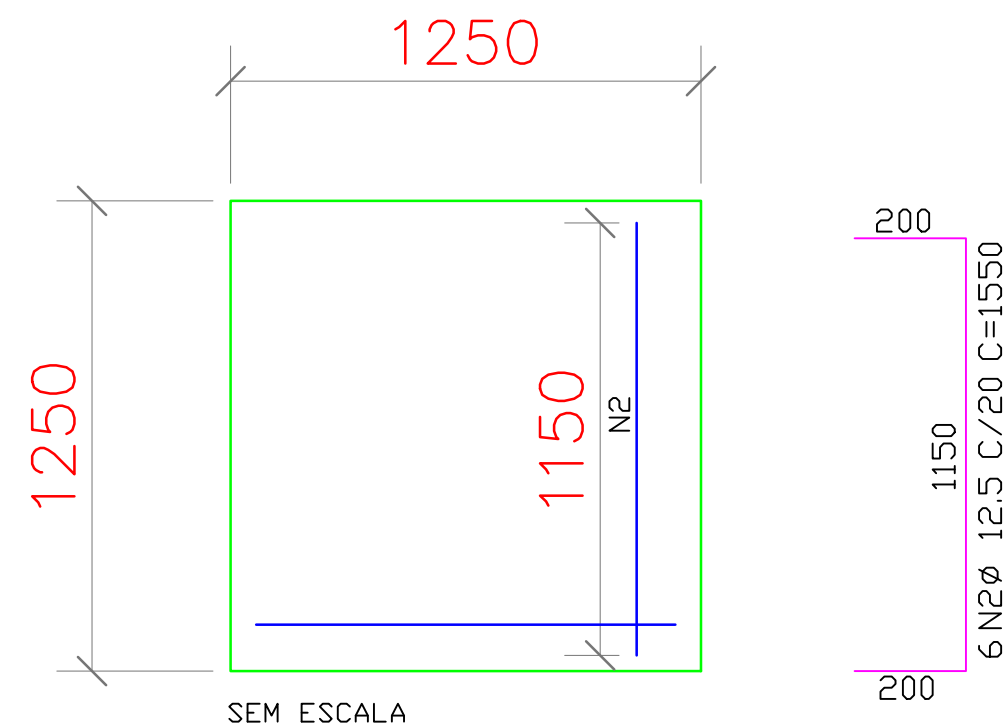
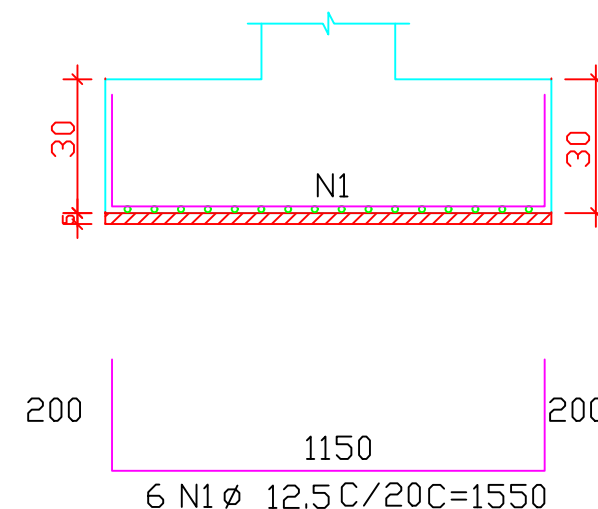



PLANTA DE LOCAÇÃO DOS BLOCOS  
Escala 1/200

## BLOCO DE FUNDAÇÃO 1250X1250mm



DETAHAMENTO VIGAS BALDRAME  
Escala 1/175



QUADRA POLIESPORTIVA - ESCOLA EDUCARTE					
PROPRIETÁRIO:  PREFEITURA MUNICIPAL DE ERNESTINA			RESPONSÁVEL TÉCNICO: CIBELE SERAFINI ENGENHEIRA CIVIL - CREA 183.912		
ÁREA TOTAL: 382,50m²		ESCALA: 1/200		PROJETO: PLANTA DE LOCAÇÃO DAS FUNDAÇÕES E DETALHAMENTOS	
DATA: ABR/2020		PRANCHA: 06/08		MAYLLU BERVIAN BISPO ENGENHEIRA CIVIL - CREA 281.048	