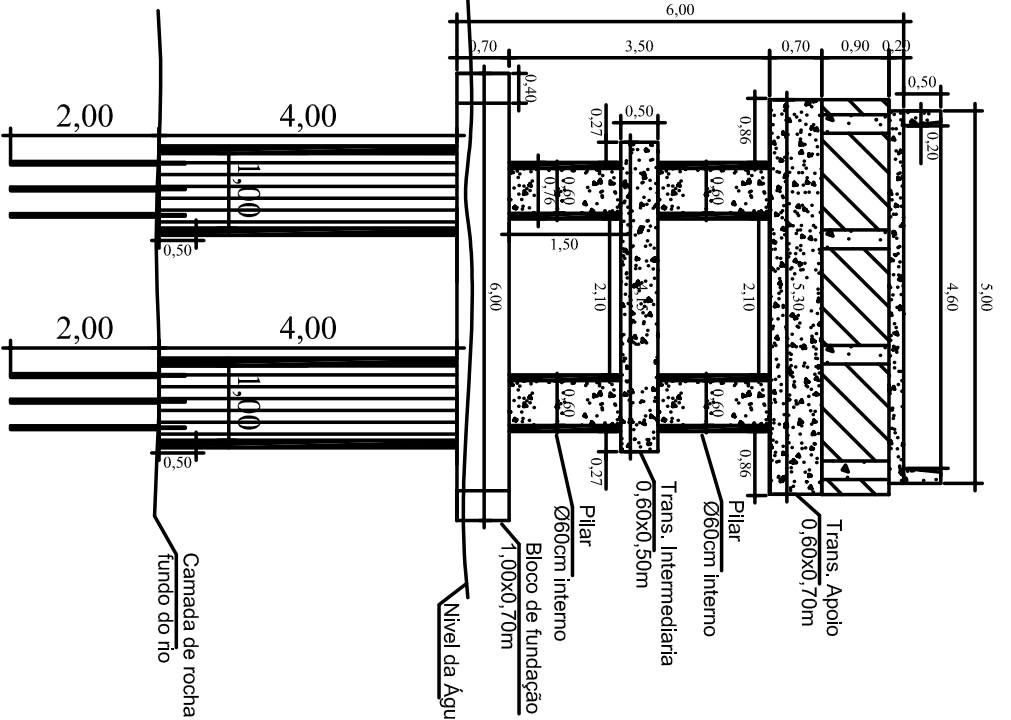
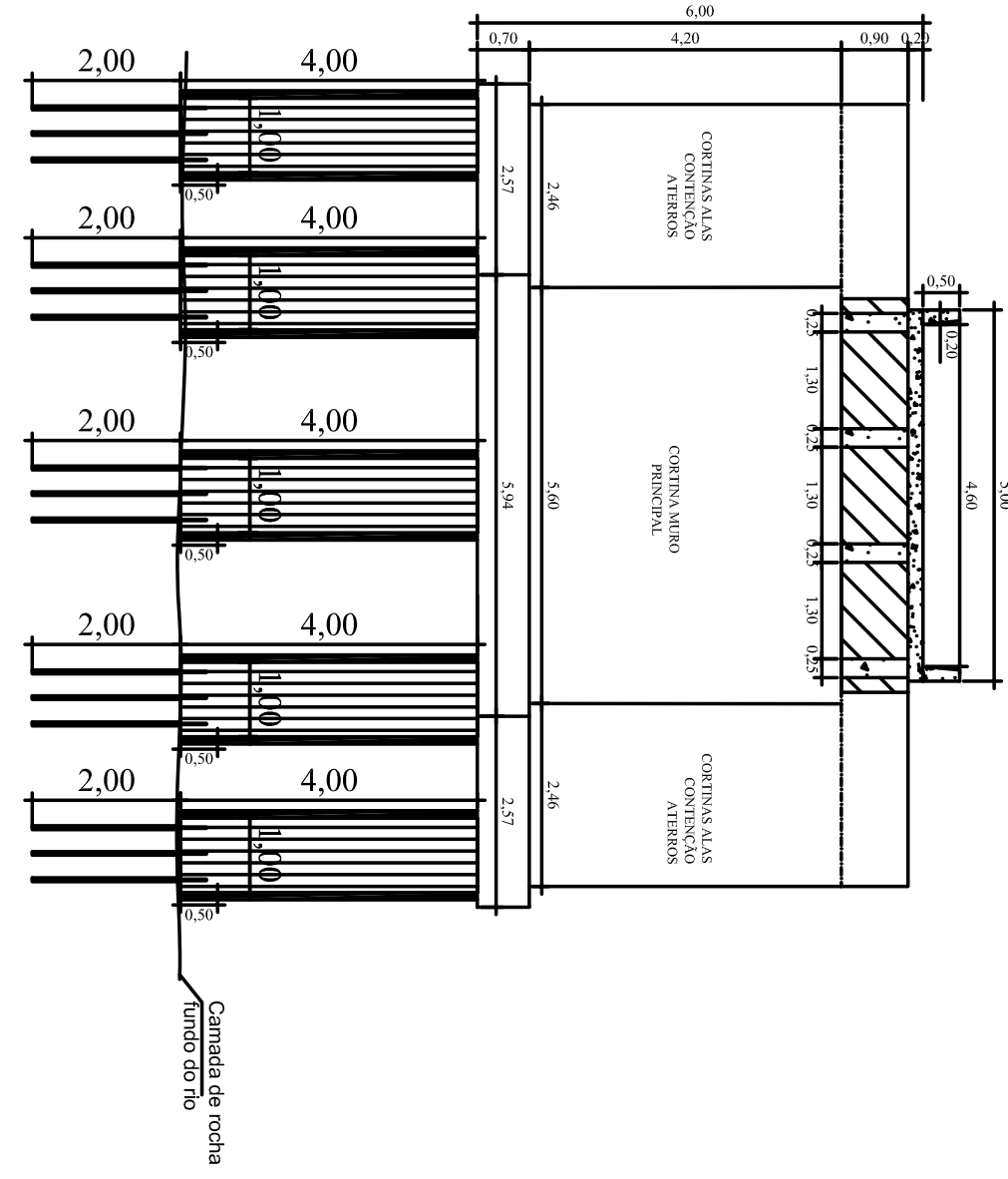
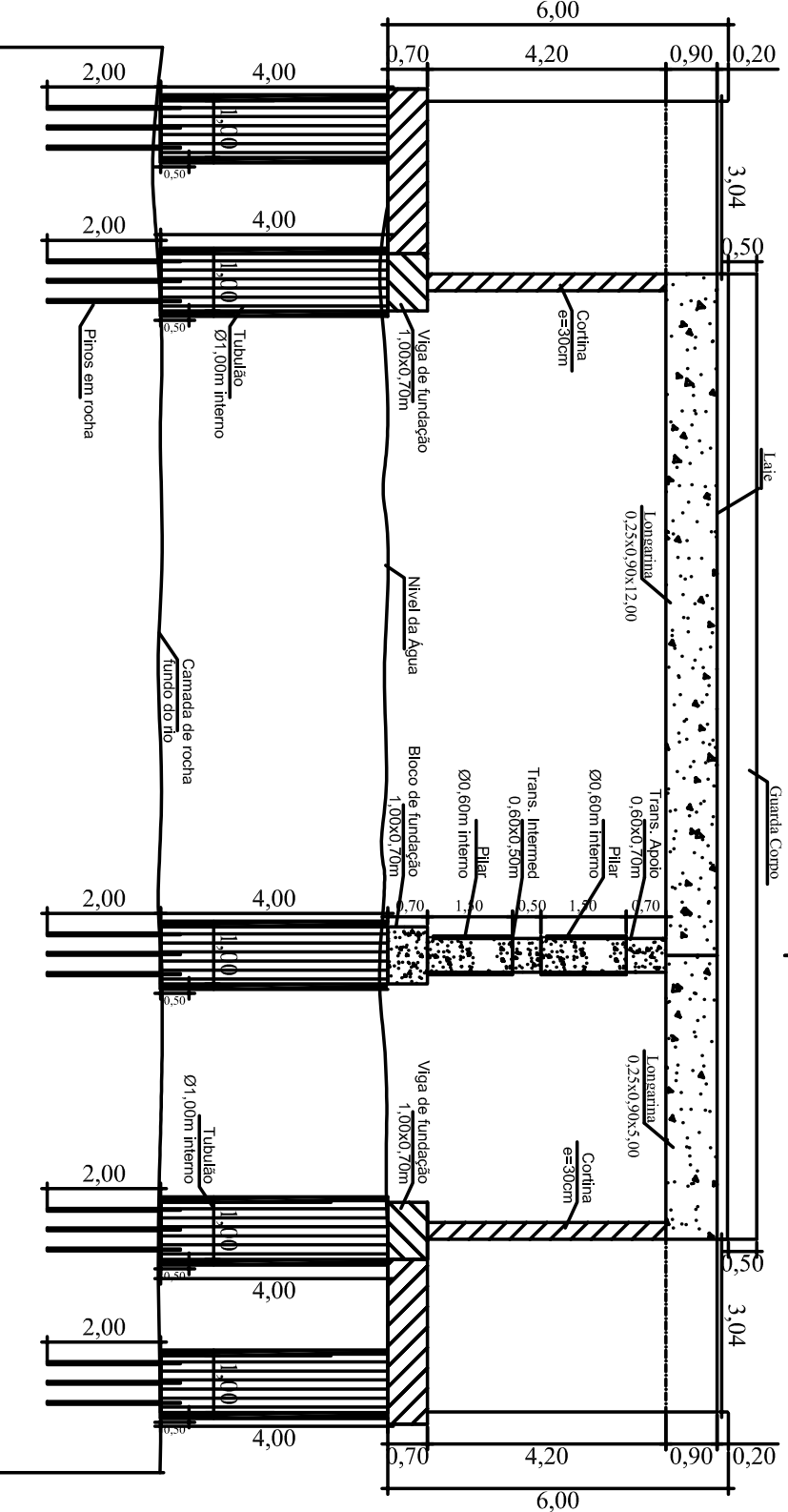
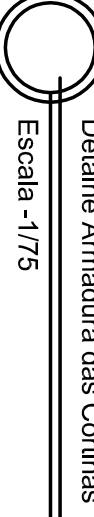
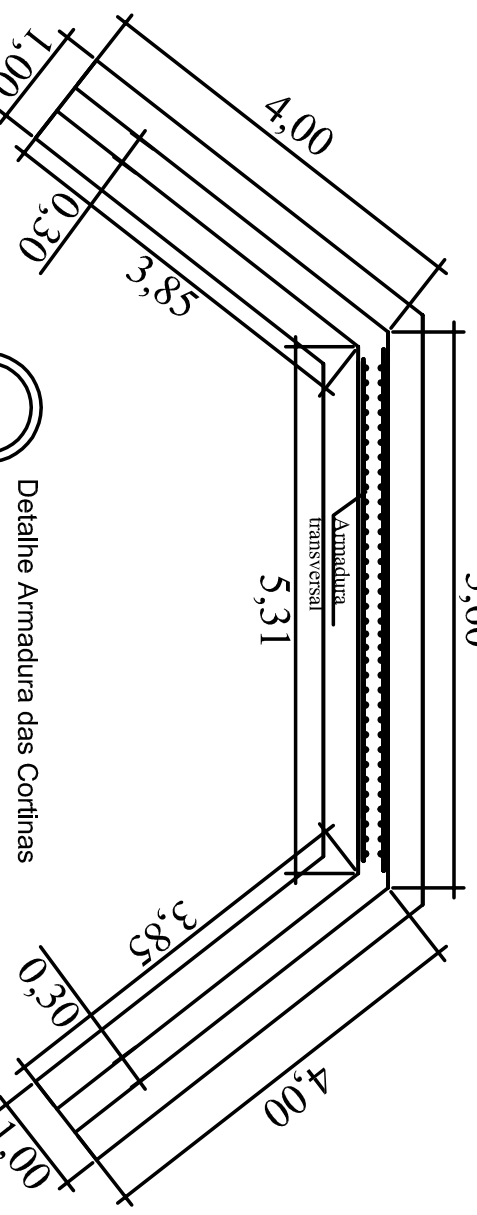


Para o bloco de fundação deve-se utilizar o cobrimento de 5,0 cm.

Para a viga de fundação deve-se utilizar o cobrimento de 5,0 cm.



Prefeitura Municipal de Espumoso/RS			PRANCHA Nº	
Ponte em Concreto Armado - 17,00x5,00x6,00m			01/02	
Ponte Rio Morcego			VAR.	
RESPONSÁVEL TÉCNICO Engº Civil Gerson L. Cecchiele CREA/RS 054411			DATA Junho / 2017	
PREFEITO Douglas Fontana			ESCALA VAR.	