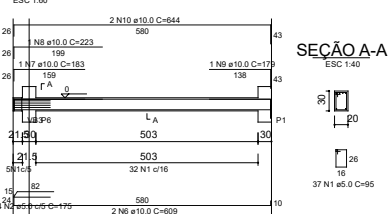
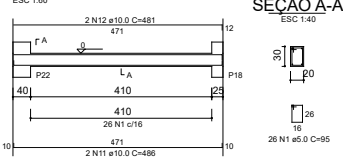


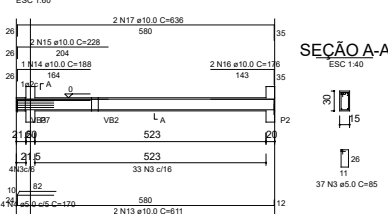
VB7



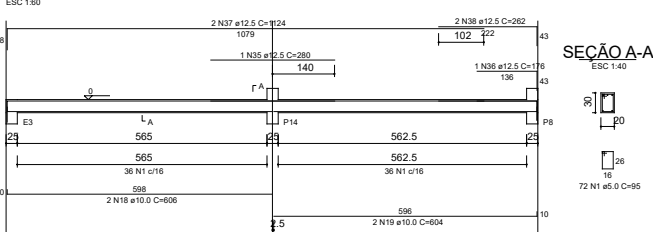
VB8



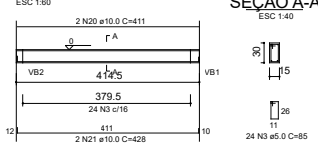
VB9



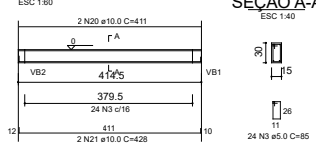
VB10



VB11



VB12



RELAÇÃO DO AÇO

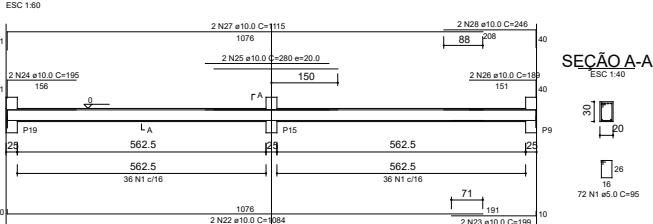
AÇO	N	DIAM (mm)	QUANT	C. LÍMIT (cm)	C. TOTAL (cm)
VB7	CA50	1	5.0	342	95
VB8	CA50	2	5.0	8	175
VB9	CA50	3	5.0	118	85
VB10	CA50	4	5.0	8	170
VB11	CA50	5	6.3	4	86
VB12	CA50	6	10.0	4	609
VB13	CA50	7	10.0	2	153
VB14	CA50	8	10.0	2	223
VB15	CA50	9	10.0	1	179
VB16	CA50	10	10.0	2	644
VB17	CA50	11	10.0	4	486
VB18	CA50	12	10.0	4	481
VB19	CA50	13	10.0	4	228
VB20	CA50	14	10.0	2	188
VB21	CA50	15	10.0	4	228
VB22	CA50	16	10.0	4	178
VB23	CA50	17	10.0	4	606
VB24	CA50	18	10.0	2	604
VB25	CA50	19	10.0	2	604
VB26	CA50	20	10.0	4	411
VB27	CA50	21	10.0	4	426
VB28	CA50	22	10.0	2	1084
VB29	CA50	23	10.0	2	195
VB30	CA50	24	10.0	2	195
VB31	CA50	25	10.0	2	280
VB32	CA50	26	10.0	4	189
VB33	CA50	27	10.0	2	1115
VB34	CA50	28	10.0	4	246
VB35	CA50	29	10.0	1	179
VB36	CA50	30	10.0	2	644
VB37	CA50	31	10.0	2	200
VB38	CA50	32	10.0	2	198
VB39	CA50	33	10.0	2	275
VB40	CA50	34	10.0	2	1116
VB41	CA50	35	12.5	1	280
VB42	CA50	36	12.5	1	178
VB43	CA50	37	12.5	2	1124
VB44	CA50	38	12.5	2	282

RESUMO DO AÇO

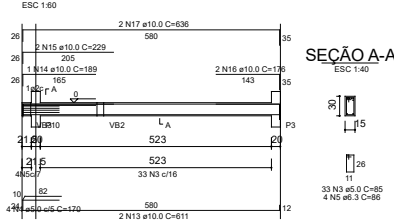
AÇO	DIAM (mm)	C. TOTAL (m)	PESO + 10% (kg)
CA50	6.3	3.4	0.9
CA50	10.0	360.4	244.4
CA50	12.5	32.3	34.2
CA50	5.0	452.8	78.8
PESO TOTAL (kg)			
CA50		279.5	
CA50		78.8	

Volume de concreto (C=20) = 4.33 m³
Área de forma = 60.76 m²

VB13



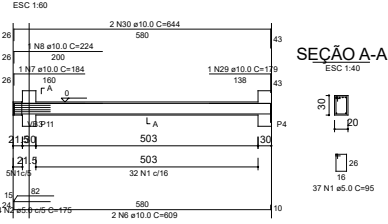
VB14



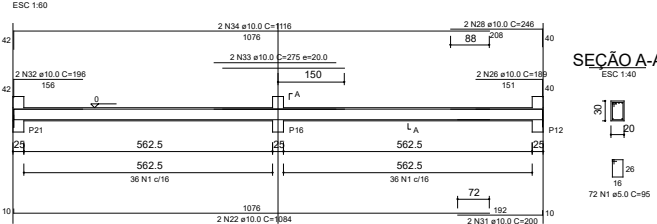
VB15



VB16



VB17



Notas e Revisões

Nº	Descrição	Data

Cliente / Proprietário:
Douglas Fontana
Município de Espumoso - RS

Responsável pelo projeto:
Gerson L. Schiele
Engenheiro Civil Gerson L. Schiele
CREA / RS 054411

Projeto Tipo:
ESTRUTURAL
Descrição:
CASA VELATÓRIA - 2ª Etapa
Vigas de Baldrame
Desenho: Gerson
Escala: 1/50
Folha:
3
Data: Abril / 2021