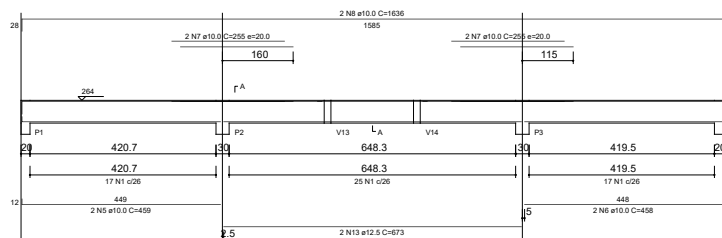
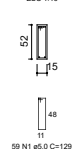


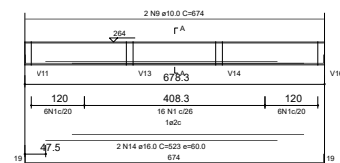
## ESC 1:60



## ESC 1:40



ESC 1:60



ESC 1:40



		RELAÇÃO DO AÇO				
V1	V4				V3	
AÇO	N	DIAM (mm)	QUANT	C. LUNIT	C. TOTAL	
CABO	1	5,0	148	200	29600	
	2	5,0	126	159	20000	
CABO	3	6,3	18	corr	175	
	4	16,3	1	corr	35	
	5	10,0	2	458	916	
	6	10,0	4	255	1020	
	7	10,0	4	255	1020	
	8	10,0	2	637	1274	
	9	10,0	1	117	234	
	11	10,0	1	205	205	
	12	10,0	1	370	370	
	13	12,5	2	673	1346	
	14	16,0	1	1020	1020	
	15	16,0	2	705	1410	
	16	16,0	1	1020	1020	
	17	16,0	6	1070	6420	
	18	16,0	1	280	280	
	19	16,0	1	840	840	
	20	16,0	2	840	1680	
	21	16,0	1	1000	1000	
	22	16,0	1	530	530	
	24	16,0	1	280	280	

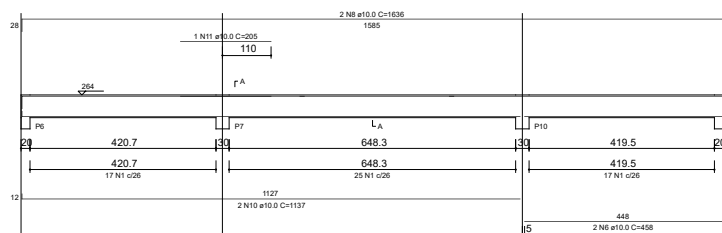
## RESUMO DO ACO

AÇO	DIAM (mm)	C.TOTAL (m)	PESO + 10% (kg)
CA50	6.3	211	56
	10.0	152.5	103
	12.5	13.5	14
	16.0	207.4	36
CA60	5.0	388.7	65
PESO TOTAL (kg)			
CA50	534.5		
CA60	66.9		

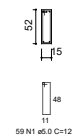
Volume de concreto (C-25) = 6,17 m<sup>3</sup>

Área de forma = 82.60 m<sup>2</sup>

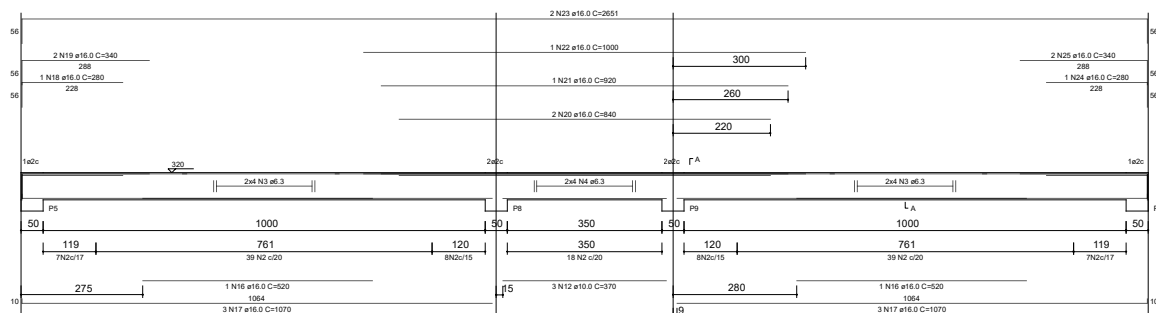
ESC 1:60



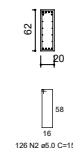
ESC 1:4



ESC 1:60



ESC 1:40



126 N2 @5.0 C=15%

VIGA CHATA (30X13)cm - 4x

AÇO	DIAM (mm)	C.TOTAL (m)	PESO + 10% (kg)
CA50	10.0	144	99
CA60	5.0	206.4	34
PESO TOTAL (kg)			
CA50	99.8		
CA60	34.1		

Volume de concreto (C-25) = 0,92 m<sup>3</sup>

Área de forma = 7.98 m<sup>2</sup>

N.º	Descrição	Data

Cliente / Proprietário: **Douglas Fontana**  
PREFEITO MUNICIPAL  
ESUMOSO - RS

Município de Esumoso - RS

Responsável pelo projeto:

  
Gerson L. Cecchele  
Engenheiro Civil  
(CREA/RS 56.031-1)

Engenheiro Civil Gerson L. Cecchele  
CREA / RS 054411

Projeto Tipo:

ESTRUTURAL

Descrição:	Folha:
CASA VELATÓRIA - 2ª Etapa	5
Vigas de Forro	

Desenho: 

Escala:	1/50	Data:	Abril / 20
---------	------	-------	------------