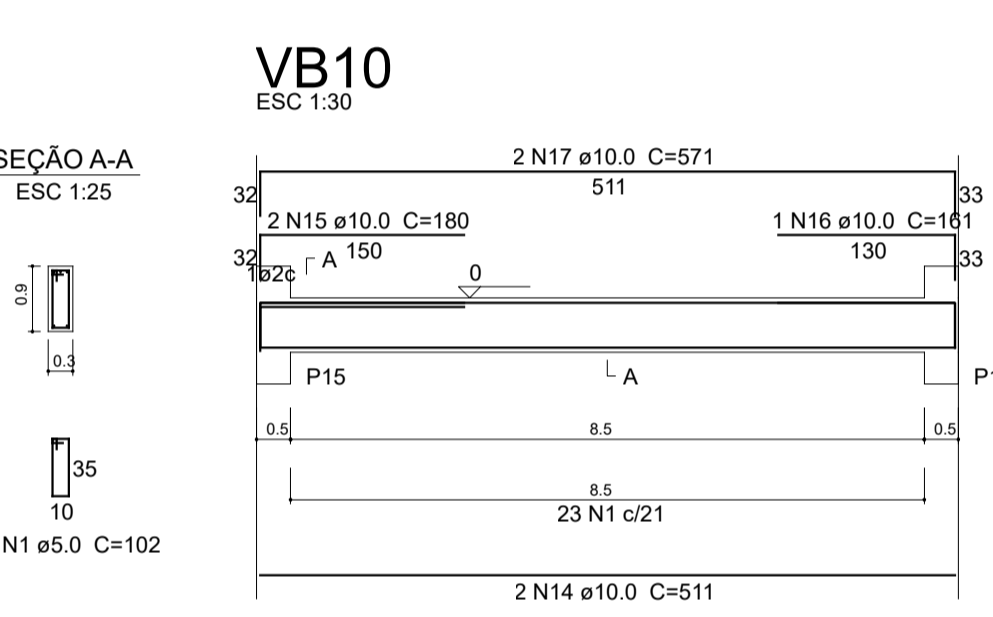
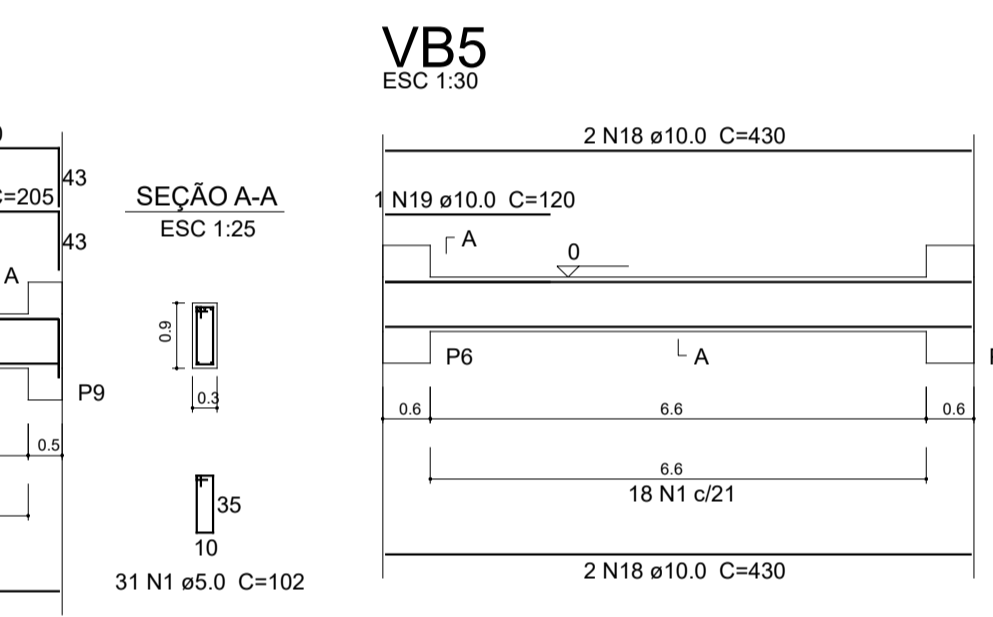
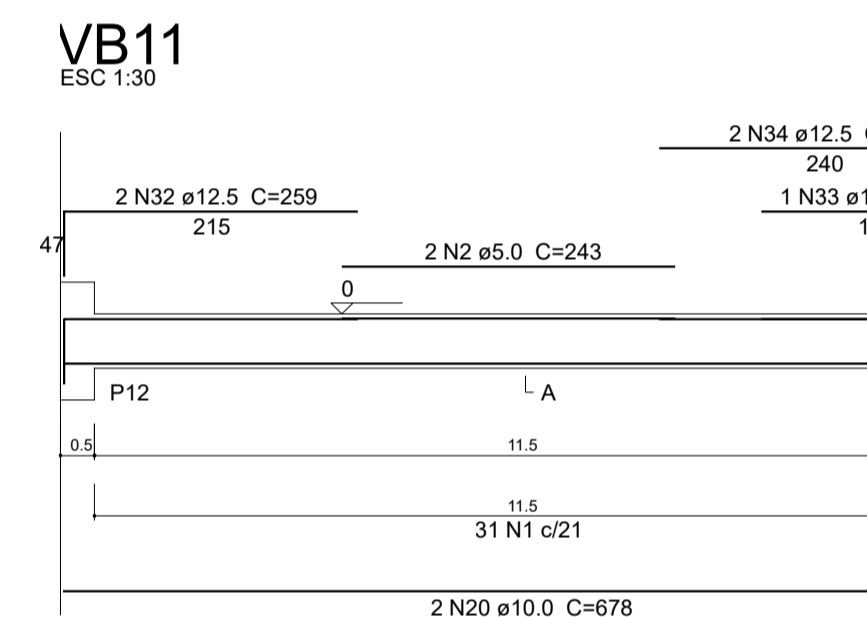
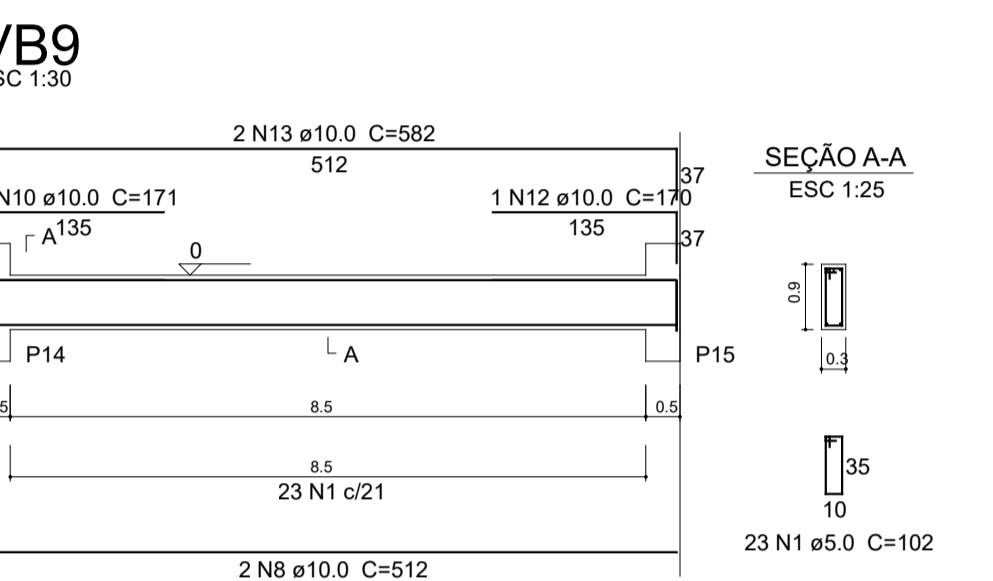
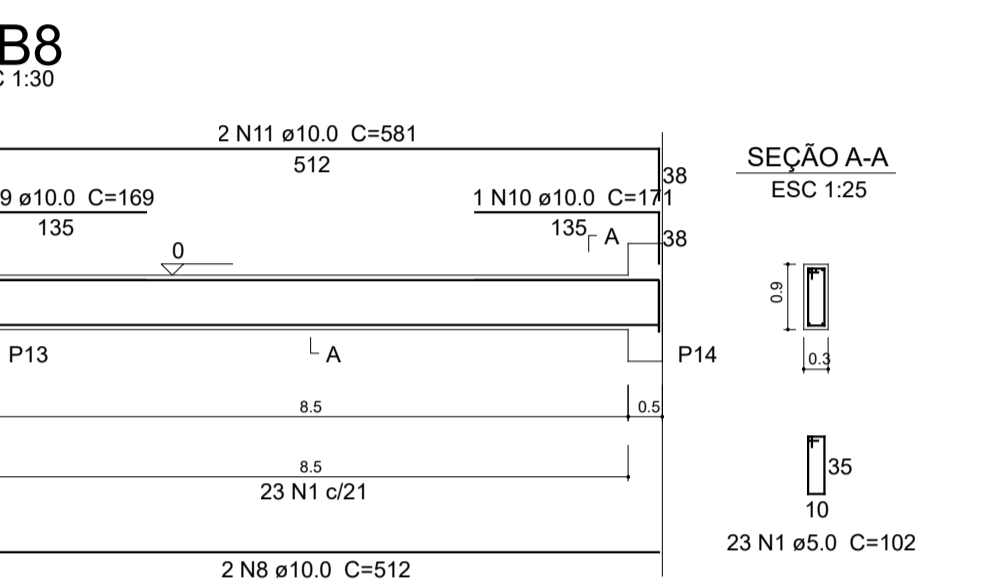
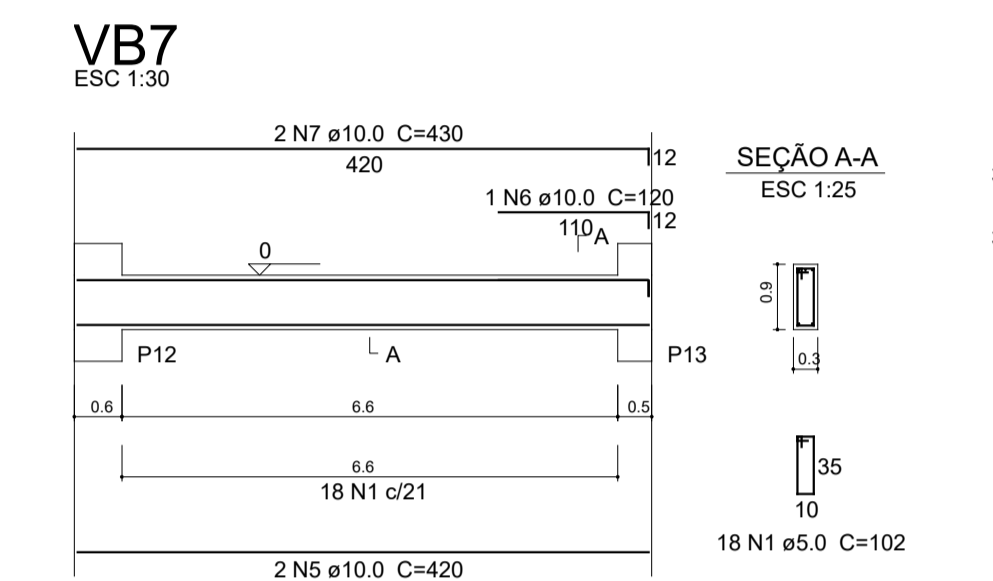
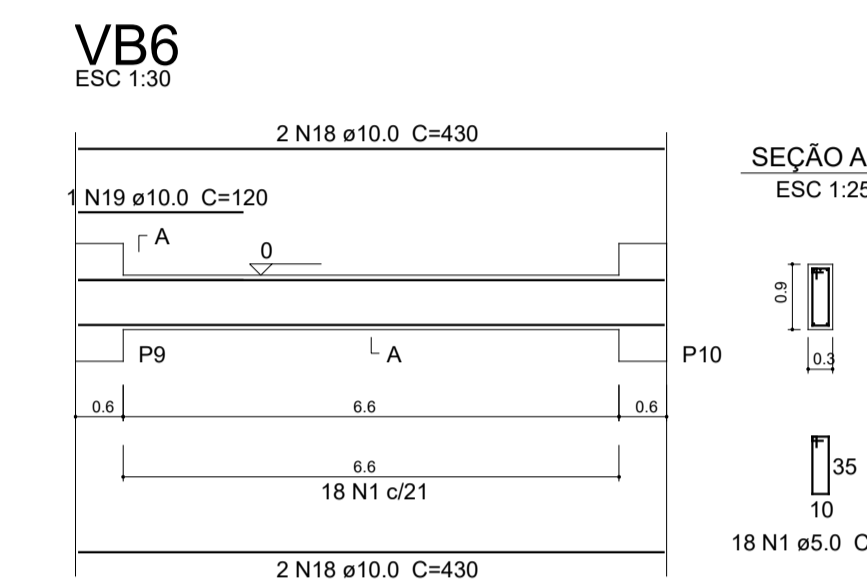


Relação do aço

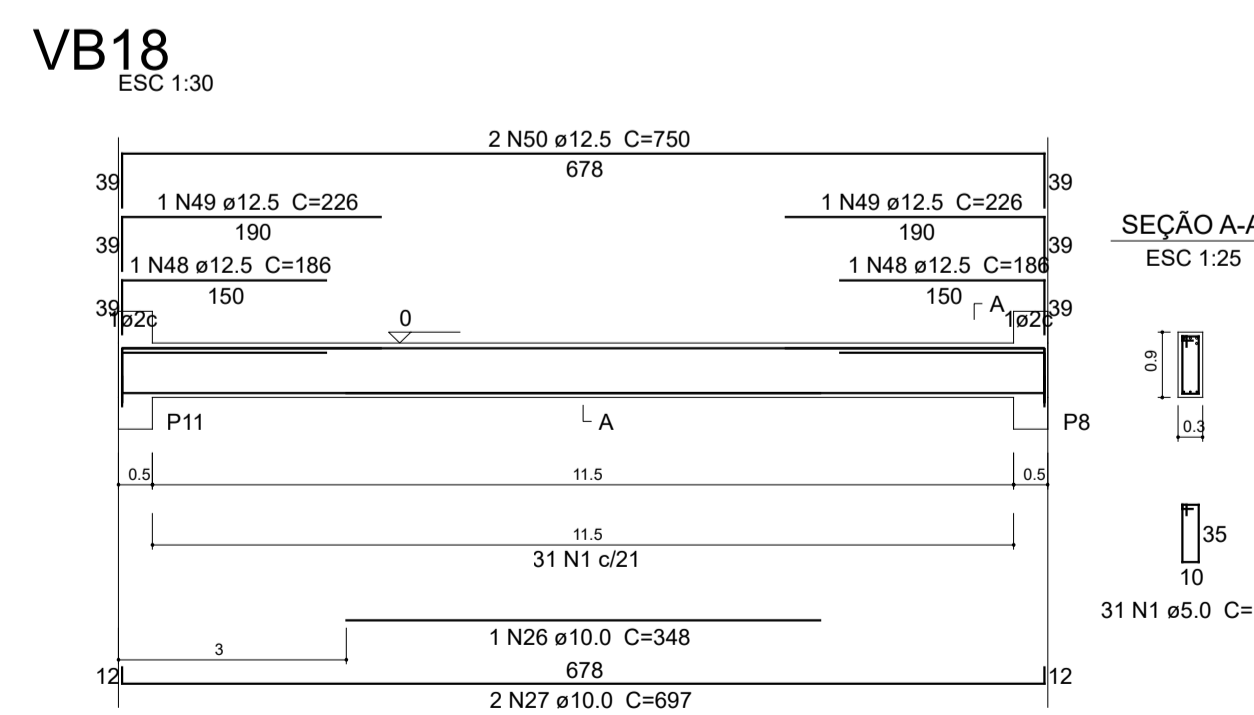
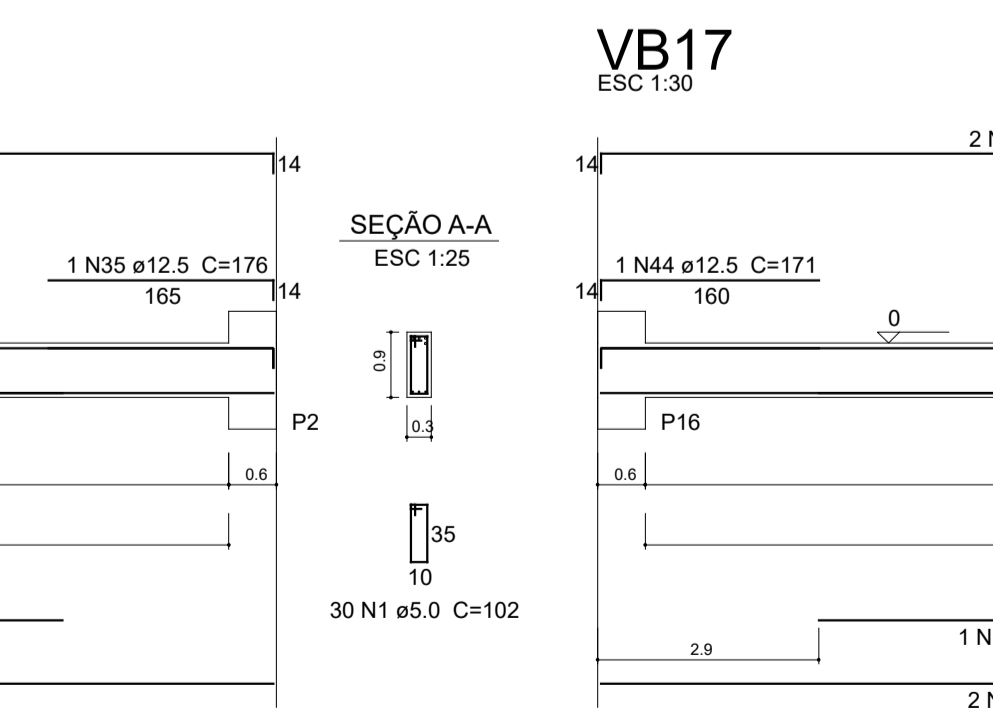
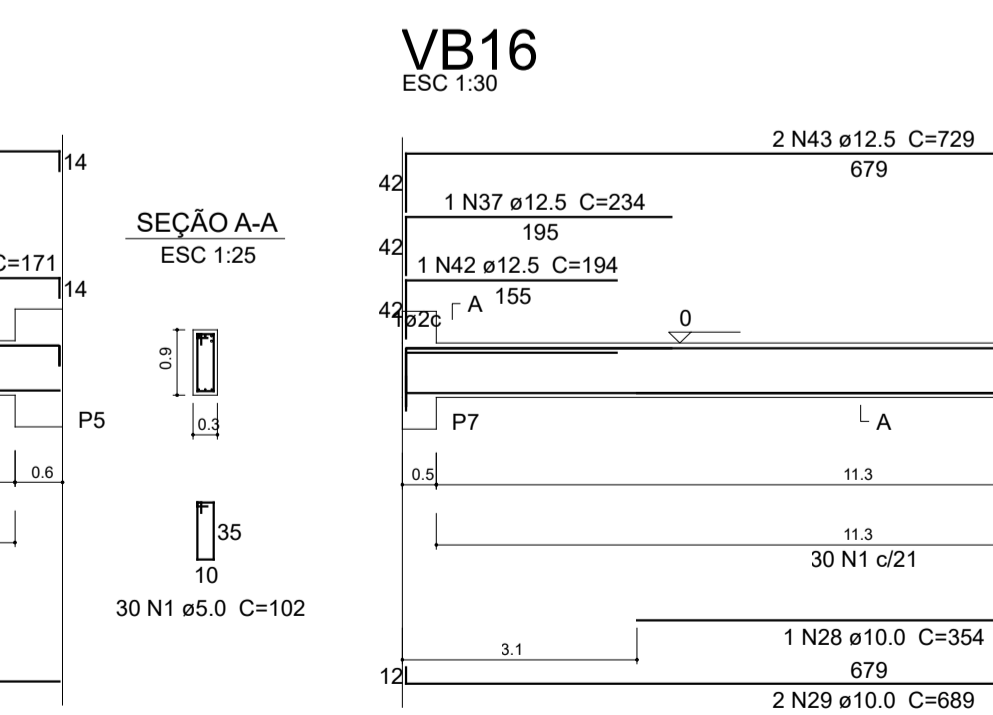
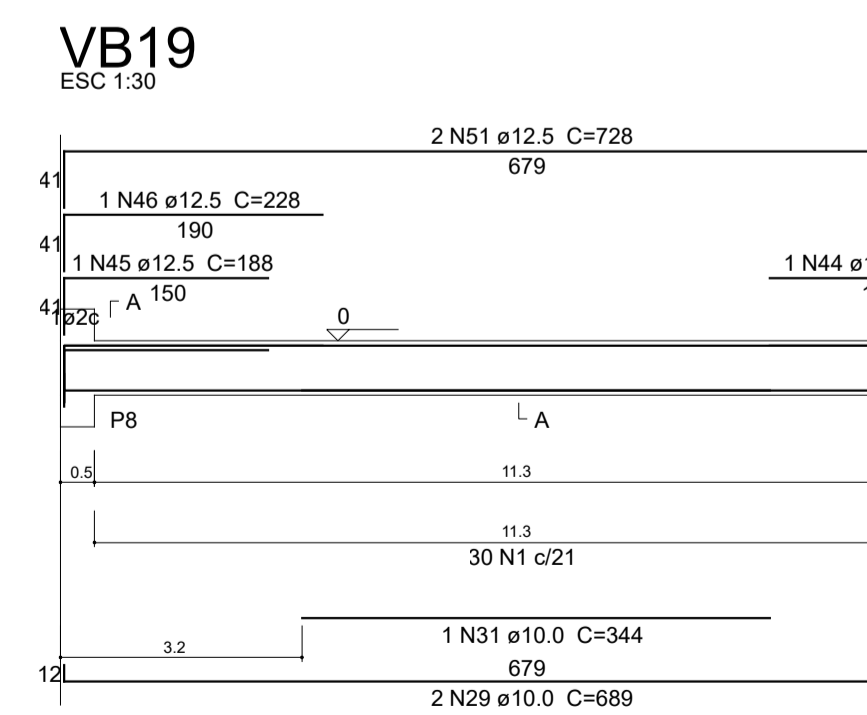
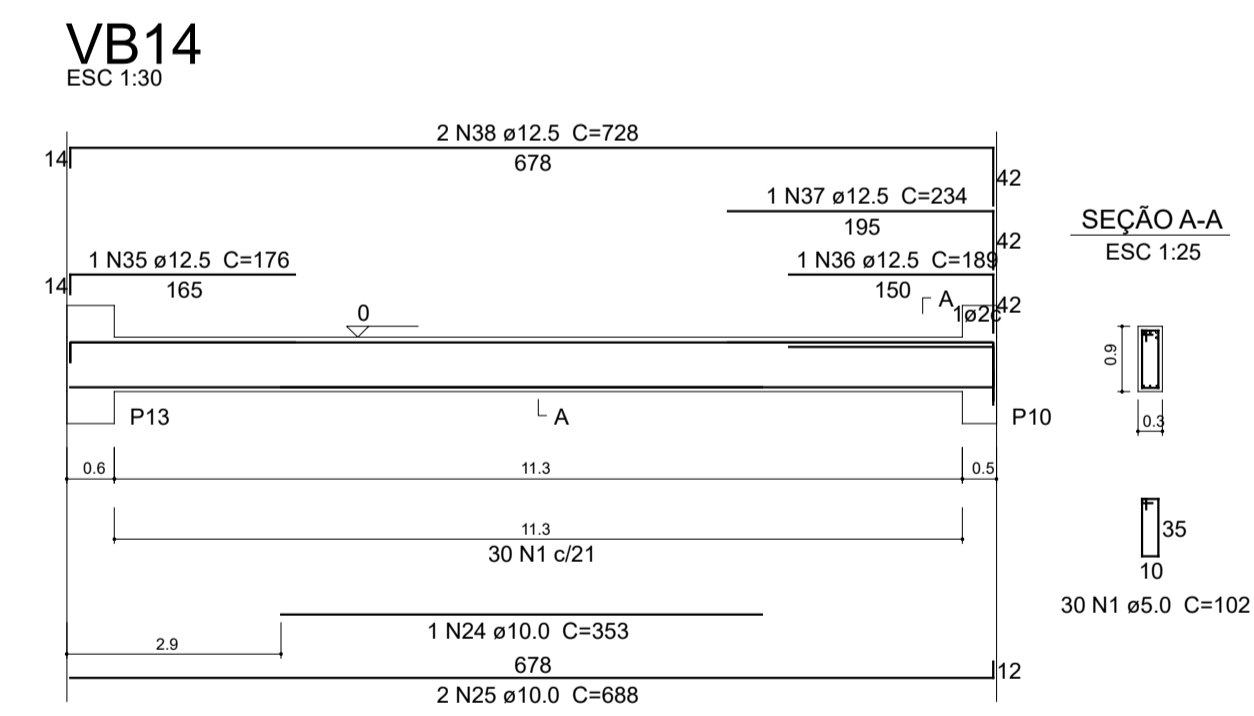
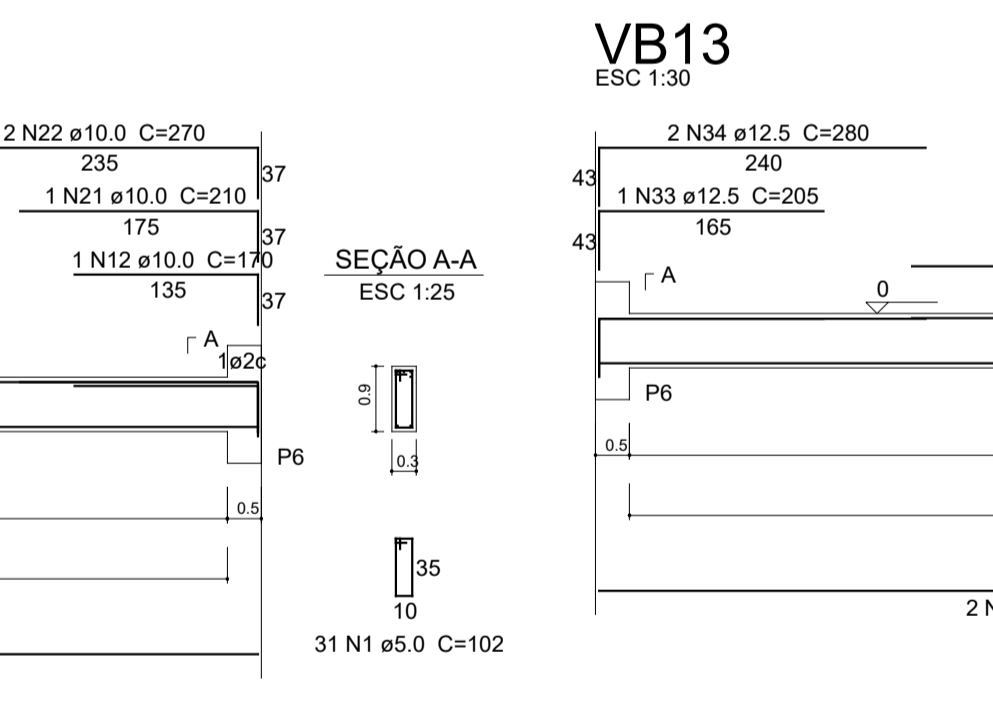
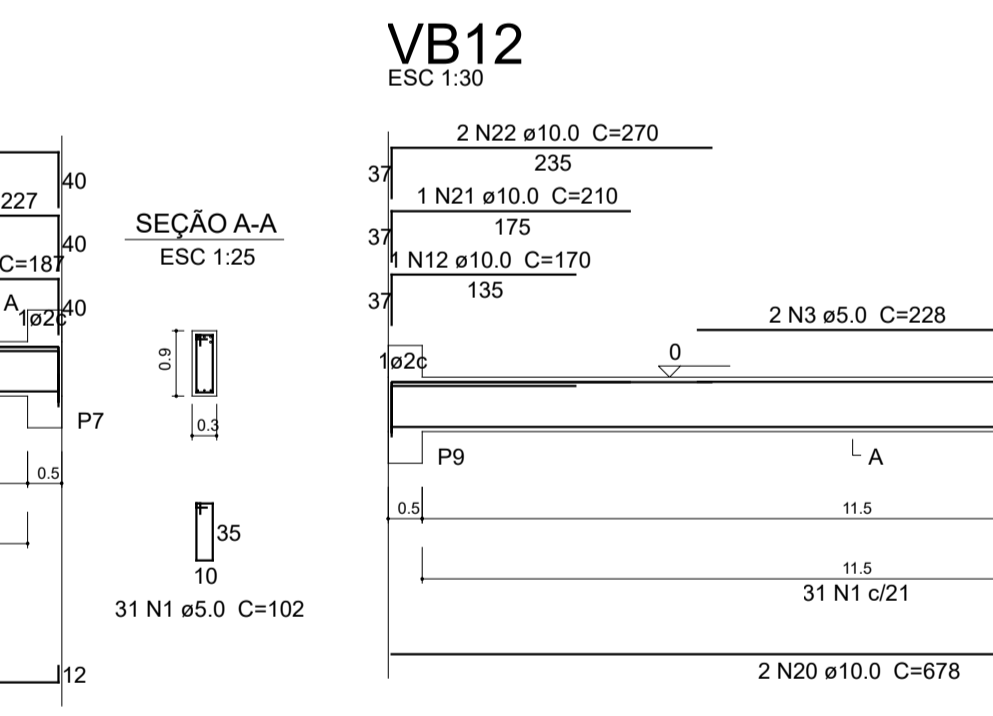
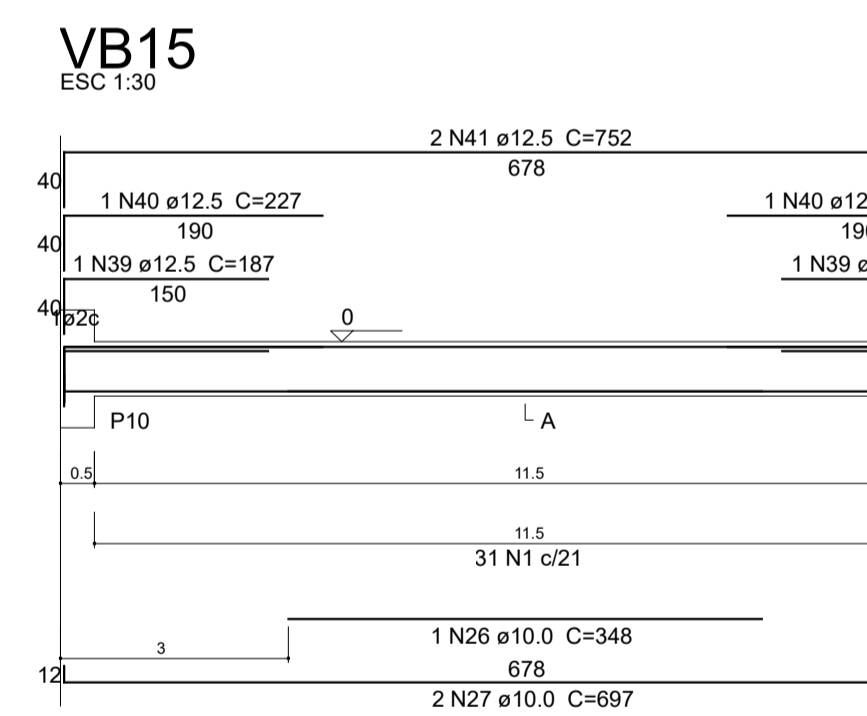
AÇO	N	DIAM (mm)	QUANT	C UNIT (cm)	C TOTAL (cm)
CA60	1	5.0	485	102	49470
	2	5.0	2	243	486
	3	5.0	2	228	456
	4	5.0	2	244	488
CA50	5	10.0	4	420	1680
	6	10.0	2	120	240
	7	10.0	4	430	1720
	8	10.0	6	512	4096
	9	10.0	2	169	338
	10	10.0	4	171	684
	11	10.0	4	581	2324
	12	10.0	4	170	680
	13	10.0	4	582	2328
	14	10.0	4	511	2044
	15	10.0	4	180	720
	16	10.0	2	161	322
	17	10.0	4	571	2284
	18	10.0	8	430	3440
	19	10.0	2	120	240
	20	10.0	4	678	2712
	21	10.0	4	210	840
	22	10.0	4	270	1080
	23	10.0	2	679	1358
	24	10.0	1	353	353
	25	10.0	4	688	2752
	26	10.0	2	348	696
	27	10.0	4	697	2788
	28	10.0	1	354	354
	29	10.0	4	689	2756
	30	10.0	1	343	343
	31	10.0	1	344	344
	32	12.5	4	259	1036
	33	12.5	2	205	410
	34	12.5	4	280	1120
	35	12.5	2	176	352
	36	12.5	1	189	189
	37	12.5	2	234	468
	38	12.5	2	728	1456
	39	12.5	2	187	374
	40	12.5	2	227	454
	41	12.5	2	752	1504
	42	12.5	1	194	194
	43	12.5	2	729	1458
	44	12.5	2	171	342
	45	12.5	2	188	376
	46	12.5	2	228	456
	47	12.5	2	727	1454
	48	12.5	2	186	372
	49	12.5	2	226	452
	50	12.5	2	750	1500
	51	12.5	2	728	1456



Resumo do aço

AÇO	DIAM (mm)	C.TOTAL (m)	PESO + 10 % (kg)
CA50	10.0	391	265.1
	12.5	154.3	163.4
CA60	5.0	509	86.3
PESO TOTAL (kg)			
CA50		428.6	
CA60		86.3	

Volume de concreto (C-25) = 6.58 m³
Área de forma = 104.2 m²



N.º	Descrição	Data

Cliente / Proprietário:

Município de Espumoso - RS

Responsável pelo projeto:

Engenheiro Responsável pelo Projeto
Gerson L. Cecchele - GREA / RS 054411

Projeto Tipo:
ESTRUTURAL

Descrição:
CASA DO AGRICULTOR
Vigas de Baldrame

Desenho: Gerson

Escala: Indicadas

Folha:
3

Data: Fev 2019