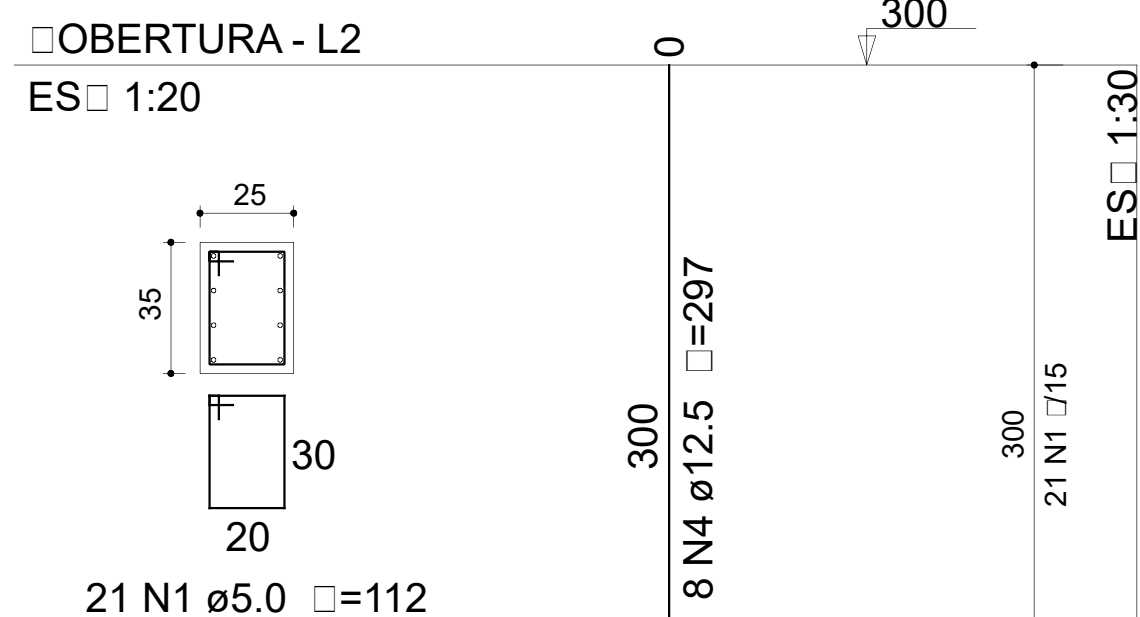
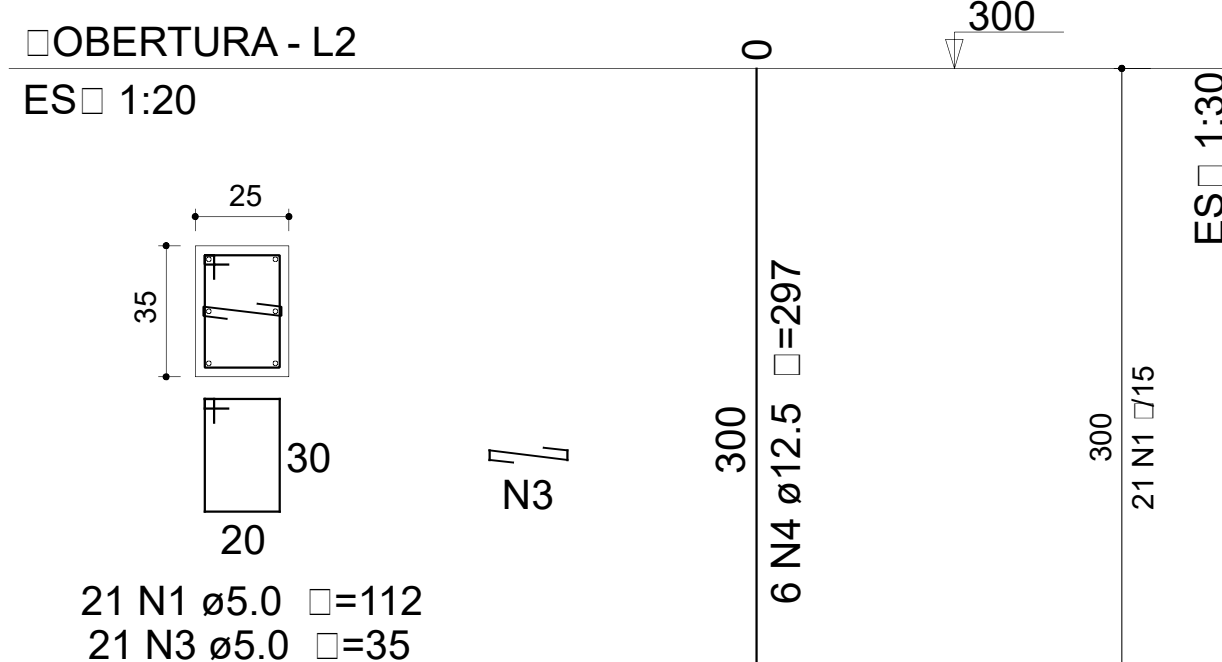


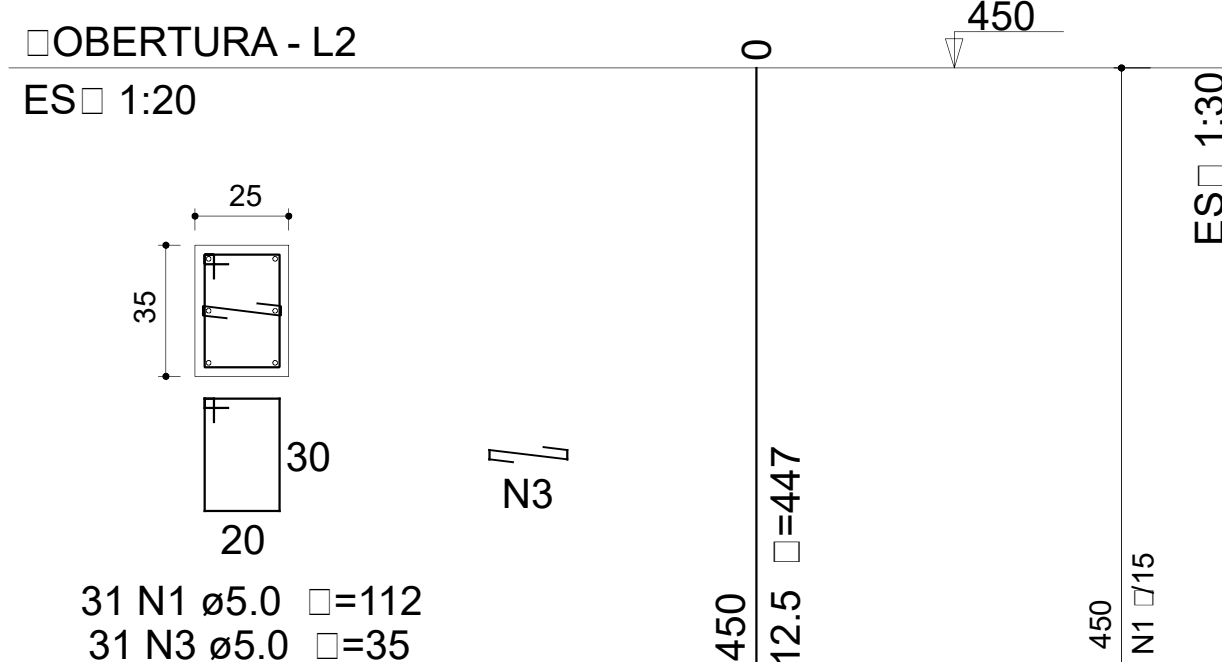
P1=P12



P6=P9



P7=P10



Relação do aço

AÇO	N	DIAM (mm)	QUANT	□.UNIT (□m)	□.TOTAL (□m)
□A60	1	5.0	600	112	67200
	2	5.0	80	35	2800
	3	5.0	140	35	4900
□A50	4	12.5	28	297	8316
	5	12.5	56	VAR	VAR
	6	12.5	28	447	12516
	7	16.0	48	446	21408
	8	16.0	36	VAR	VAR
	9	16.0	12	VAR	VAR

Resumo do aço

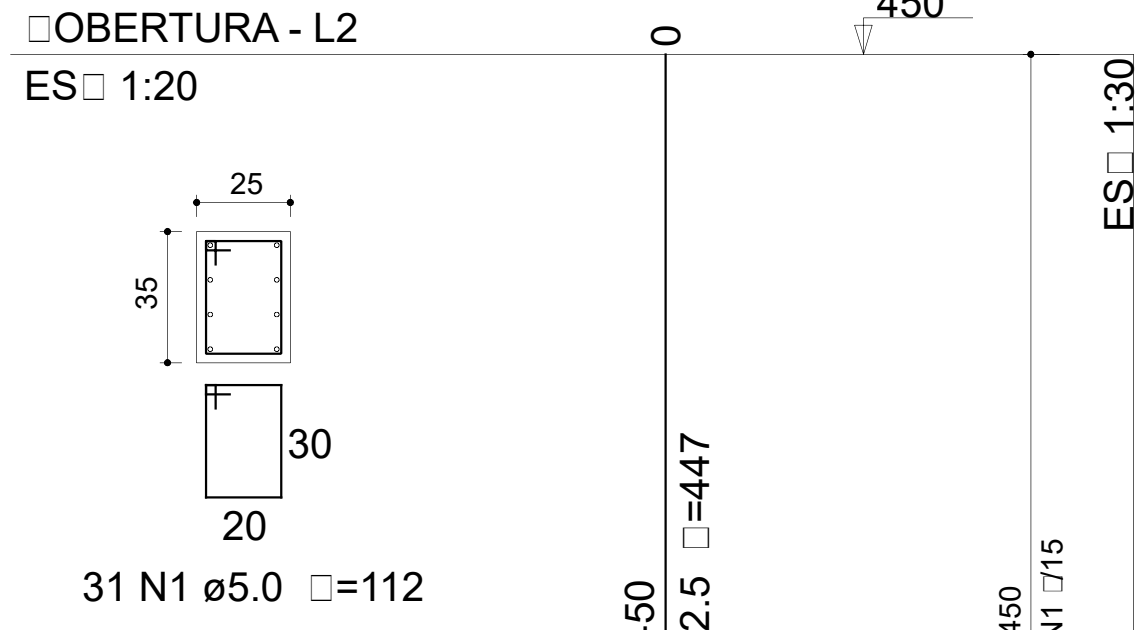
AÇO	DIAM (mm)	□.TOTAL (m)	PESO + 10 % (kg)
□A50	12.5	274.4	290.8
	16.0	268.5	466.1
□A60	5.0	749	127

PESO TOTAL (kg)

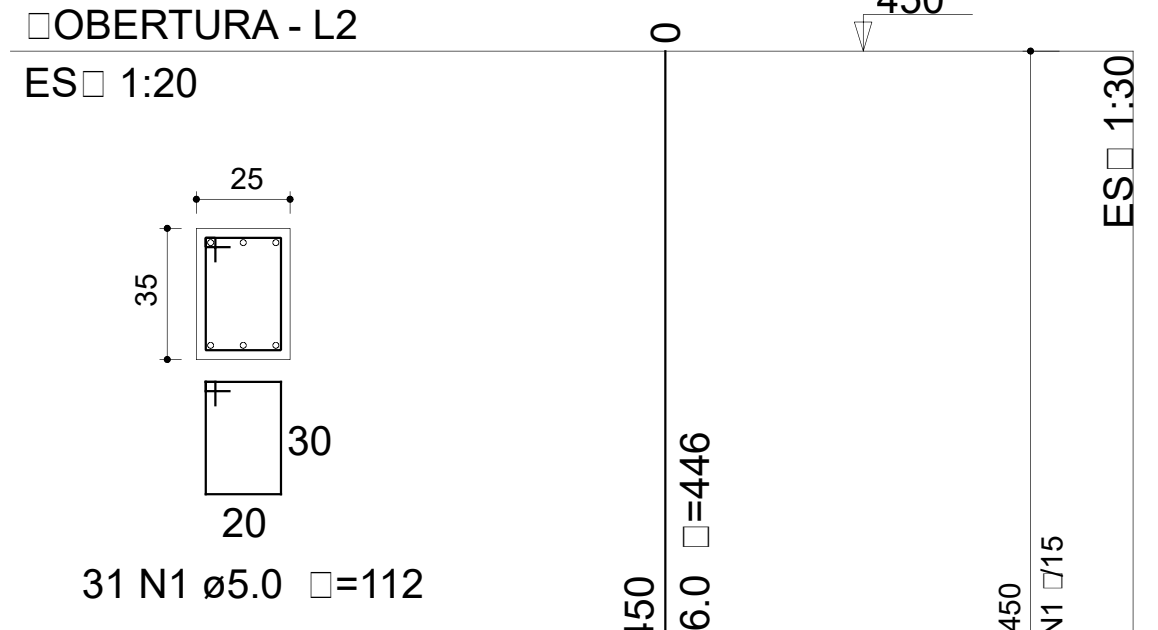
□A50	756.8
□A60	127

Volume de □on□reto (□-25) = 7.5 m³  
Área de forma = 102.84 m²

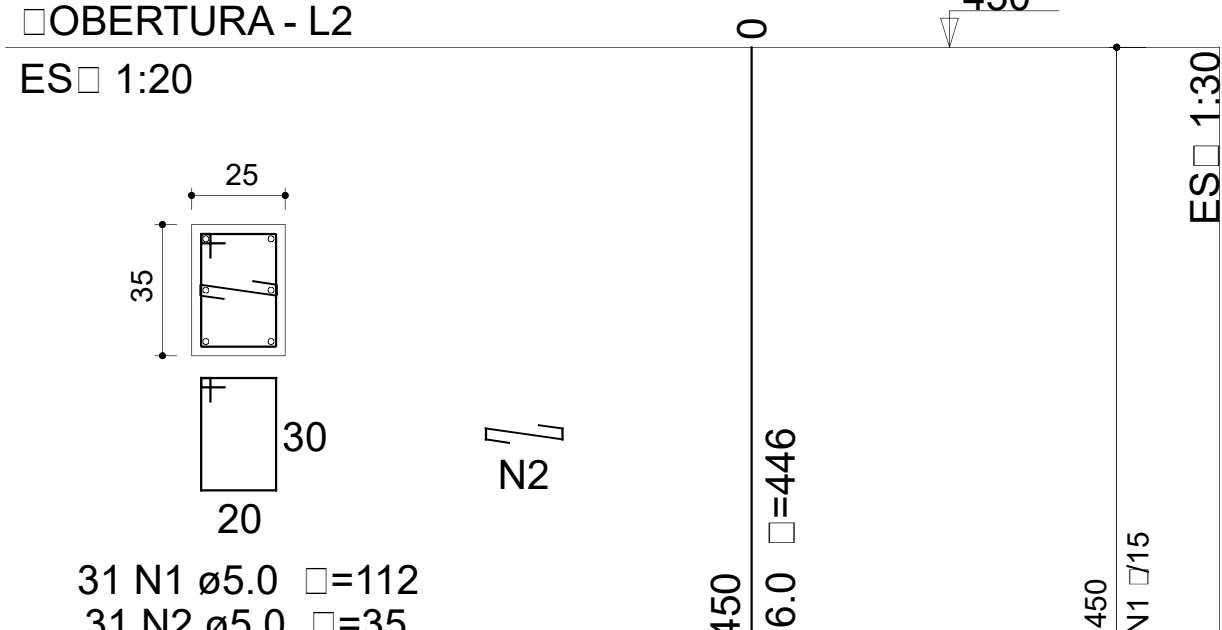
P2=P13



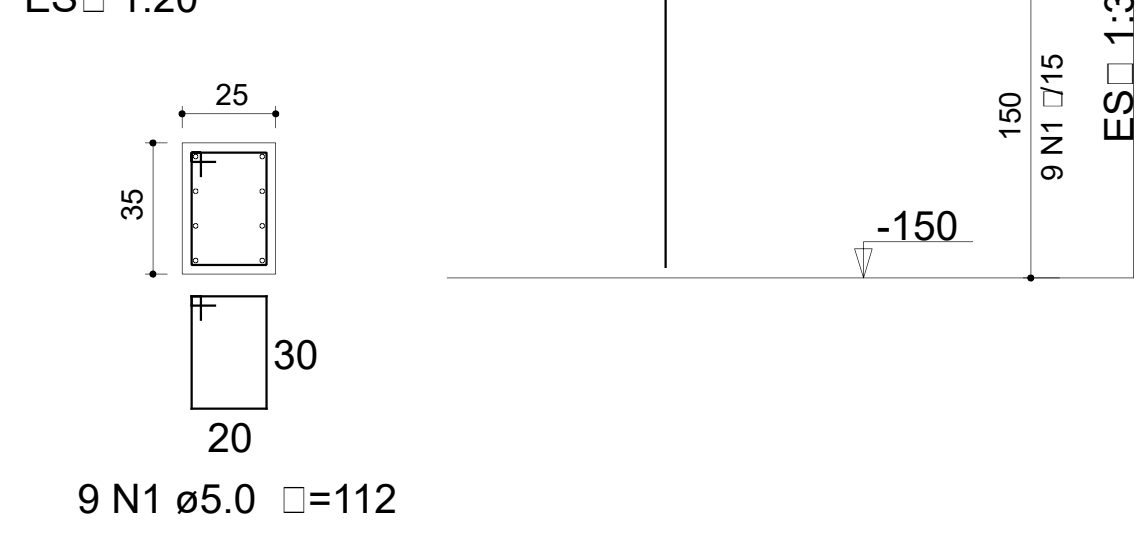
P3=P4=P8=P11=P14=P15



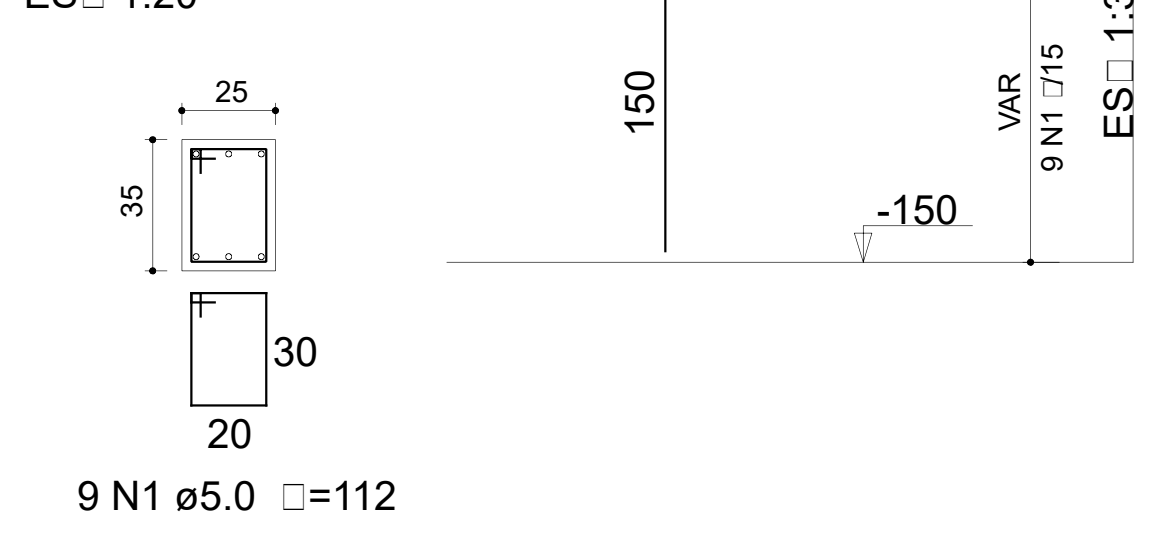
P5=P16



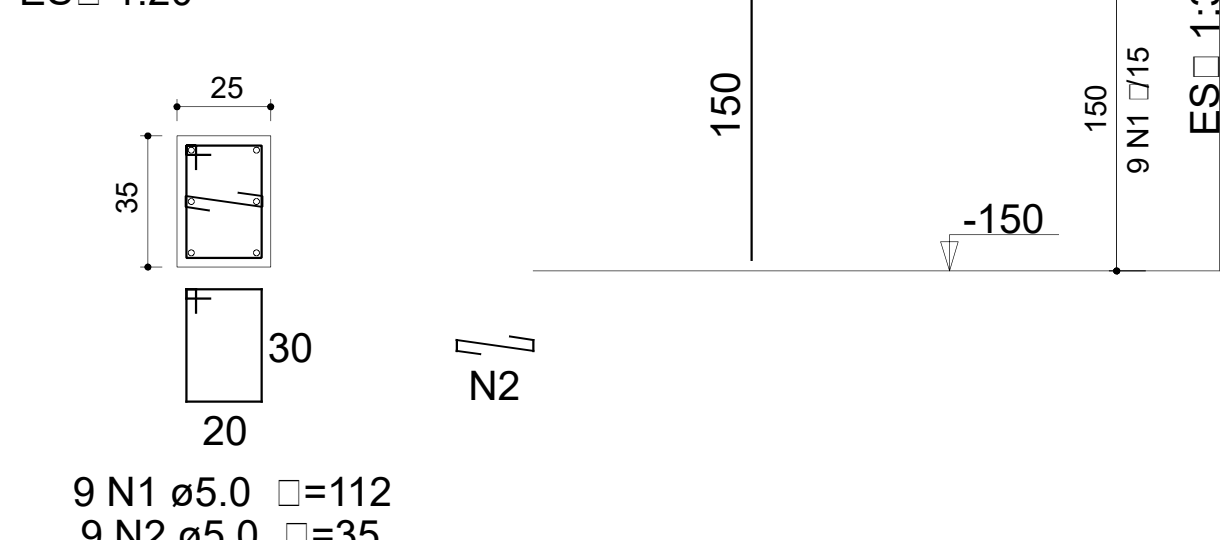
BALDRAME - L1



BALDRAME - L1



BALDRAME - L1



Notas e Revisões

N.º	Descrição	Data

Cliente / Proprietário:  
Município de Espumoso - RS

Responsável pelo projeto:  
Engenheiro Responsável pelo Projeto  
Gerson L. de Almeida - REA / RS 054411

Projeto Tipo:  
**ESTRUTURAL**

Descrição:  
ASA DO AGRICULTOR  
Pilares

Desenho: Gerson

Essala: Indústrias

Folha:  
**2**

Data: Fev 2018