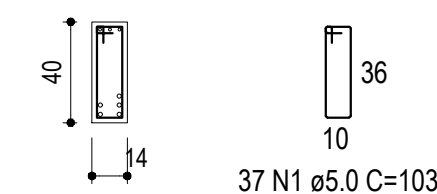
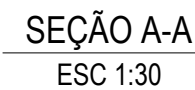
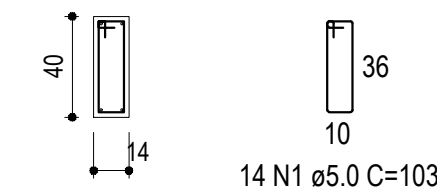
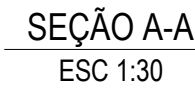


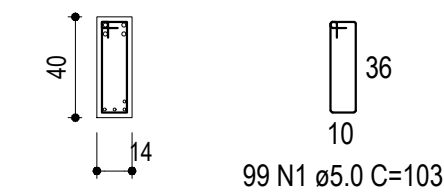
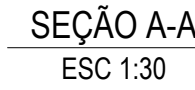
ESC 1:50



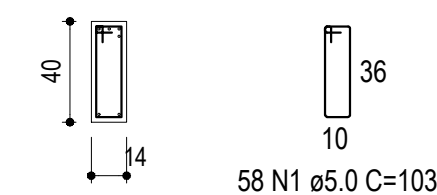
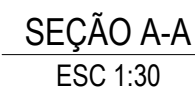
ESC 1:50



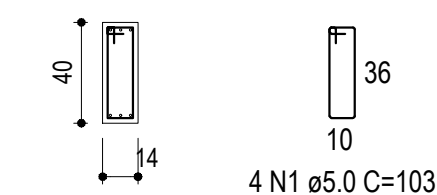
ESC 1:50



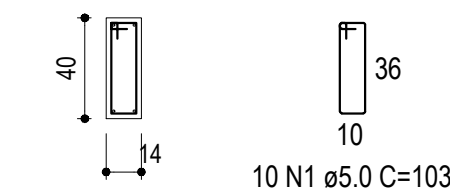
ESC 1:50



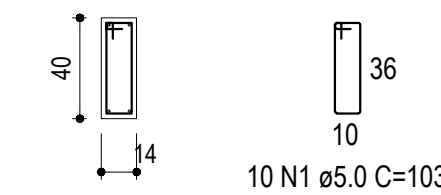
ESC 1:50



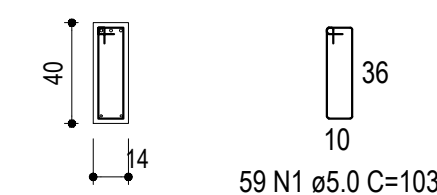
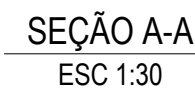
ESC 1:50



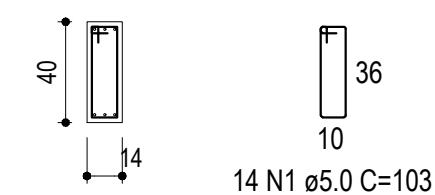
ESC 1:5



ESC 1-50

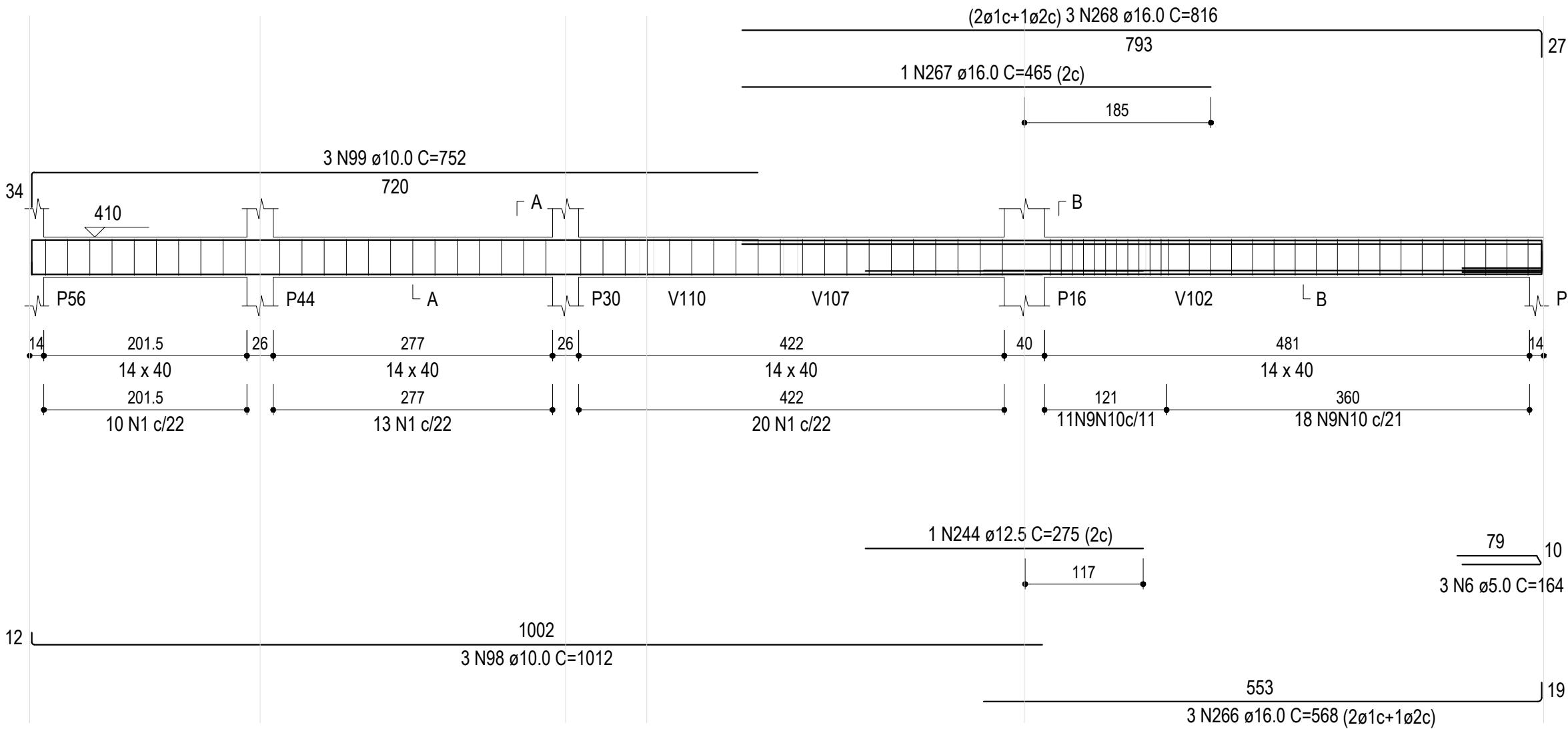


FSC 1:50



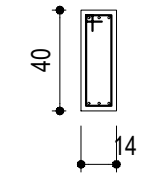
V138 (14 x 40)

ESC 1:50



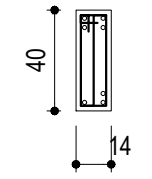
SEÇÃO A-A

ESC 1:30



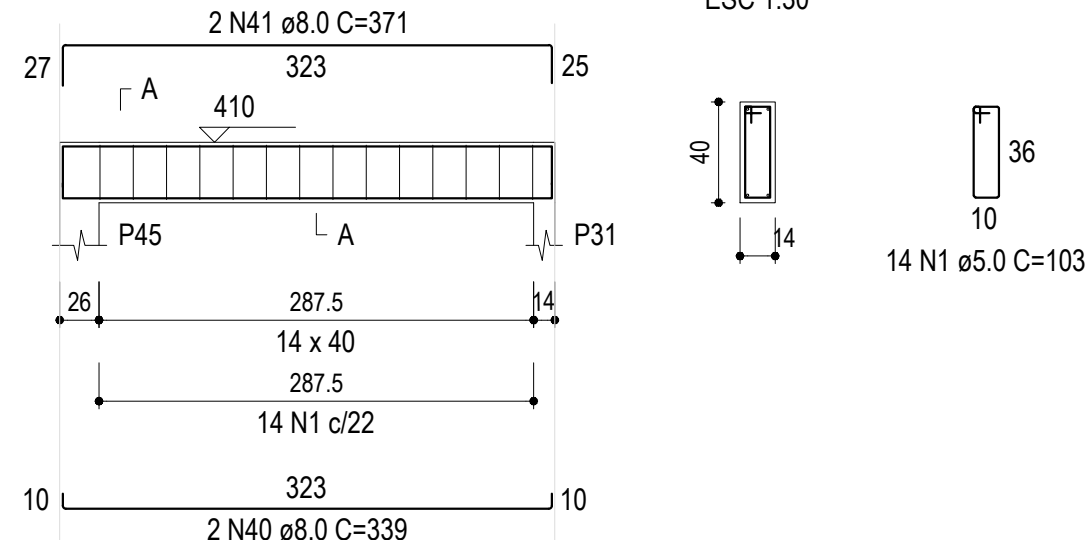
SEÇÃO B-B

ESC 1:30



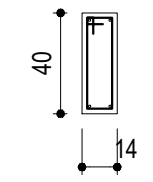
V139 (14 x 40)

ESC 1:50



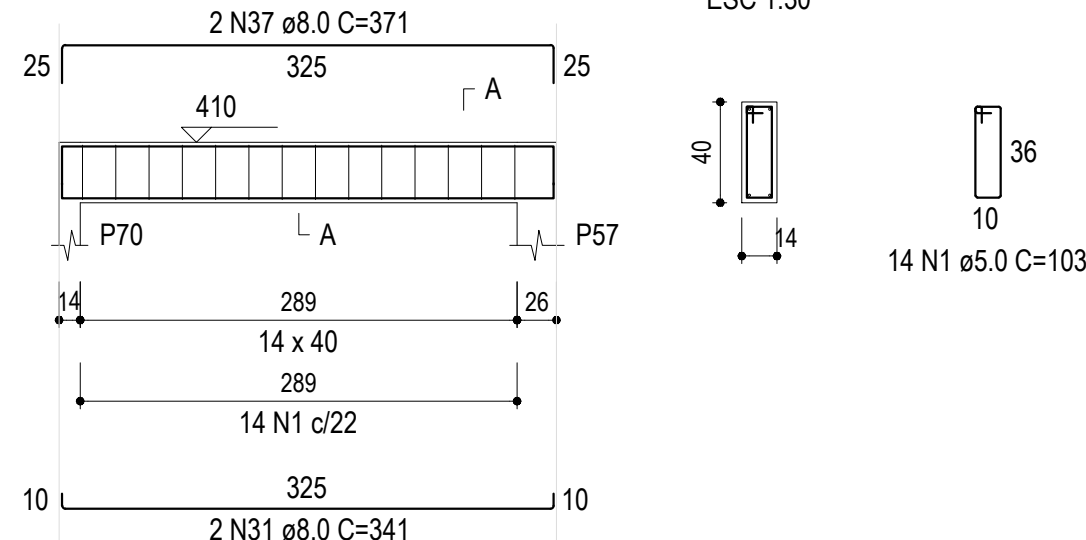
SEÇÃO A-A

ESC 1:30



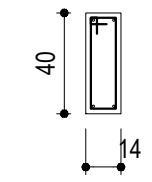
V140 (14 x 40)

ESC 1:50



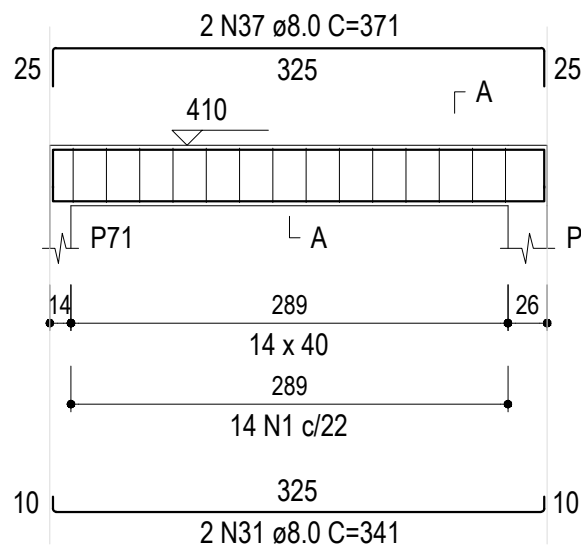
SEÇÃO A-A

ESC 1:30



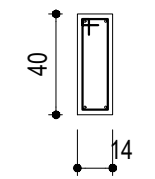
V141 (14 x 40)

ESC 1:50



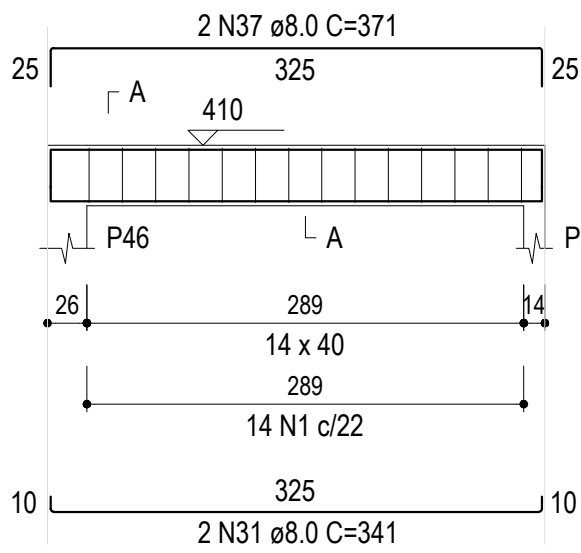
SEÇÃO A-A

ESC 1:30



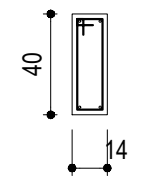
V142 (14 x 40)

ESC 1:50



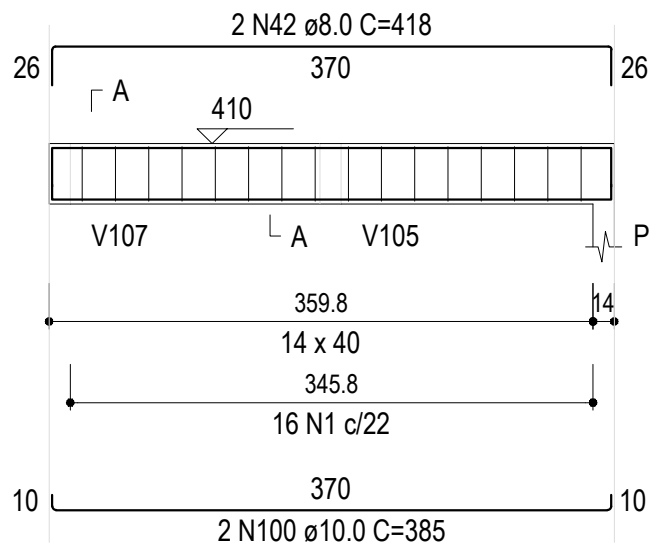
SEÇÃO A-A

ESC 1:30



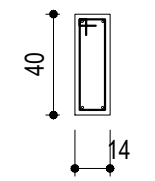
V143 (14 x 40)

ESC 1:50



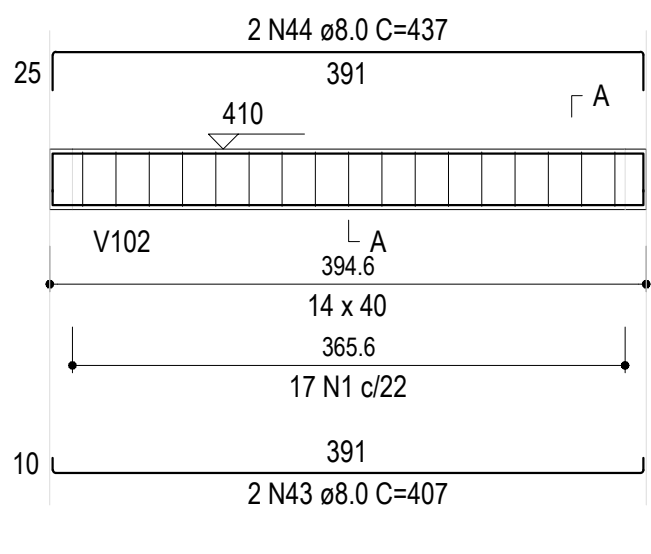
SEÇÃO A-A

ESC 1:30



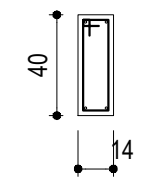
V144 (14 x 40)

ESC 1:50



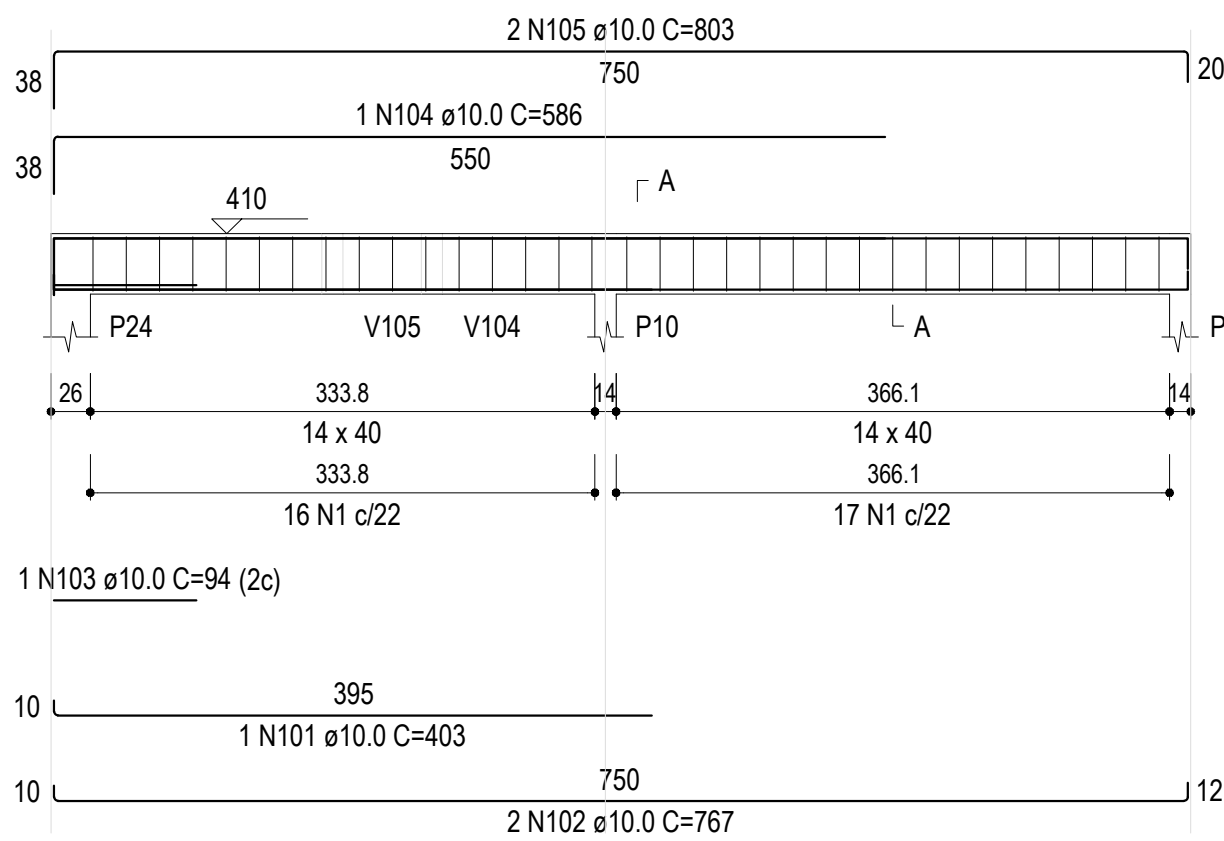
SEÇÃO A-A

ESC 1:30



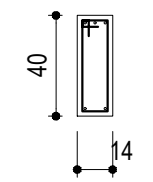
V145 (14 x 40)

ESC 1:50



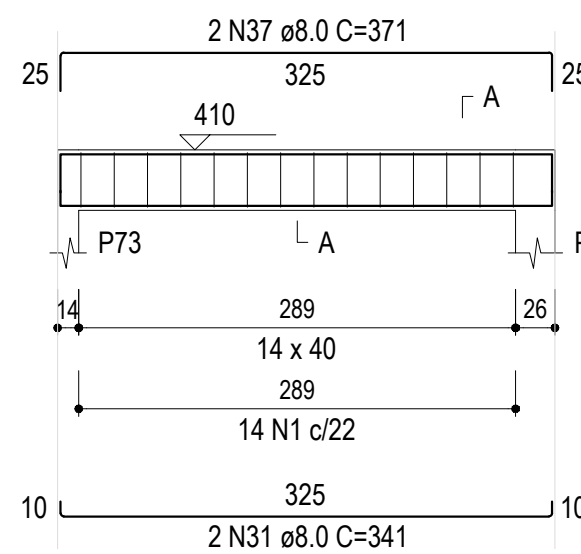
SEÇÃO A-A

ESC 1:30



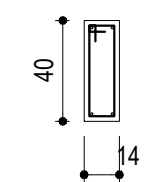
V150 (14 x 40)

ESC 1:50



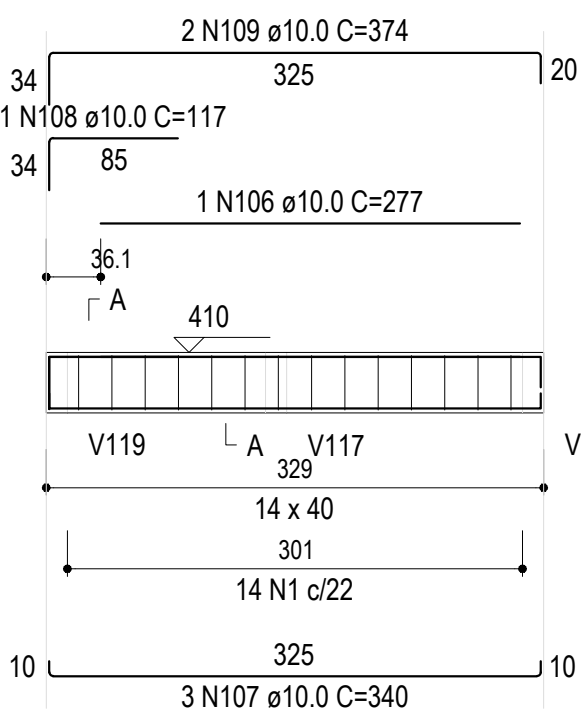
SEÇÃO A-A

ESC 1:30



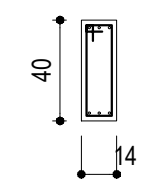
V151 (14 x 40)

ESC 1:50



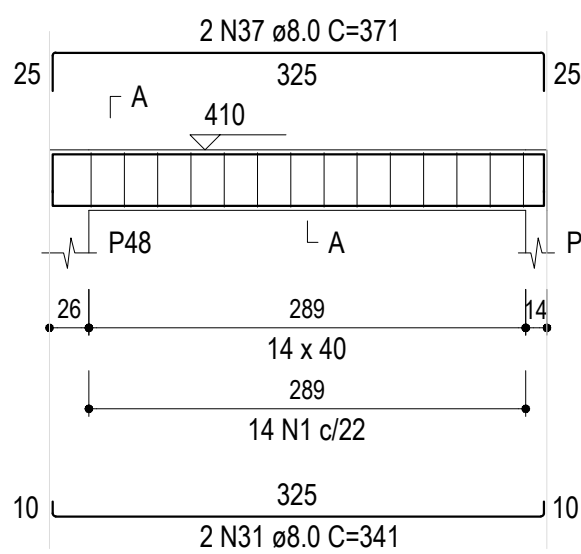
SEÇÃO A-A

ESC 1:30



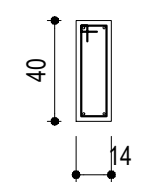
V152 (14 x 40)

ESC 1:50



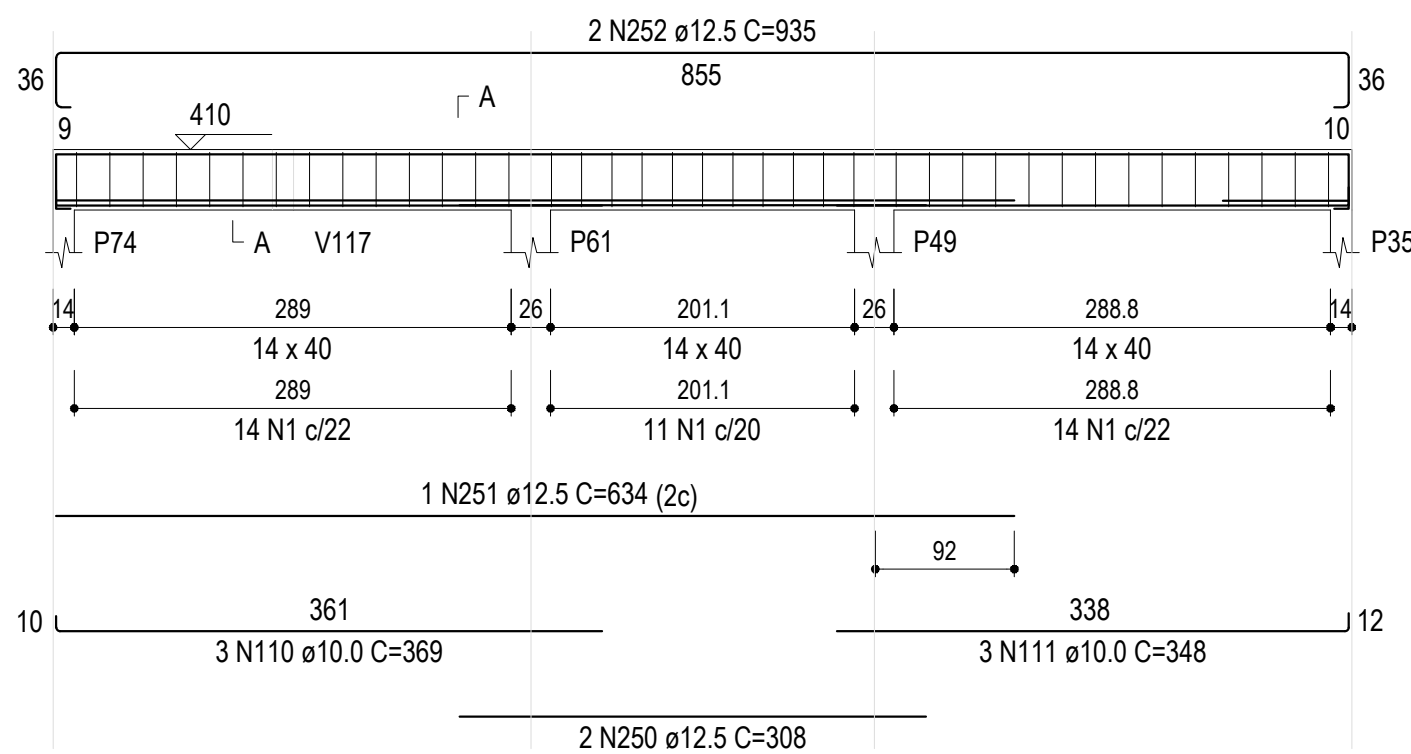
SEÇÃO A-A

ESC 1:30



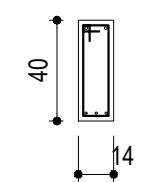
V153 (14 x 40)

ESC 1:50



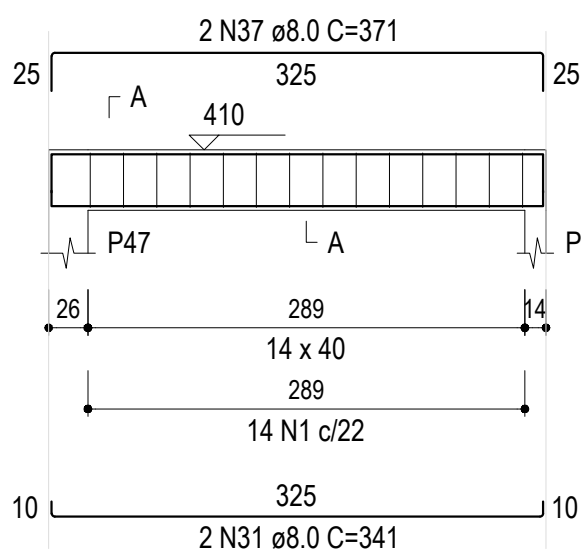
SEÇÃO A-A

ESC 1:30



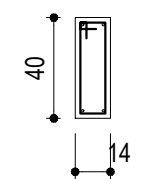
V146 (14 x 40)

ESC 1:50



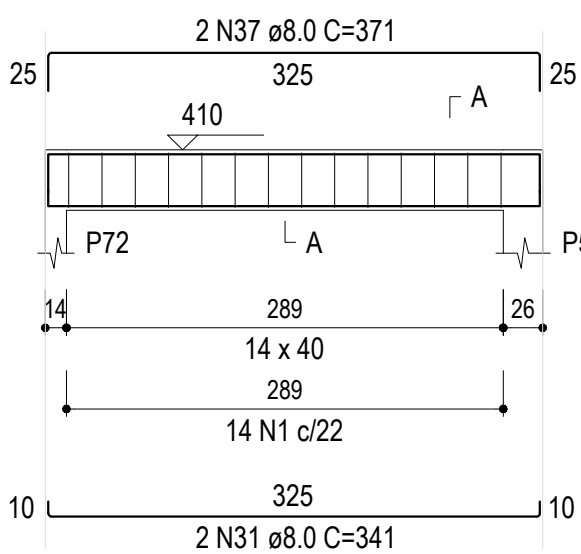
SEÇÃO A-A

ESC 1:30



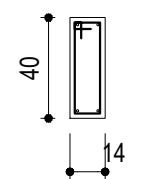
V147 (14 x 40)

ESC 1:50



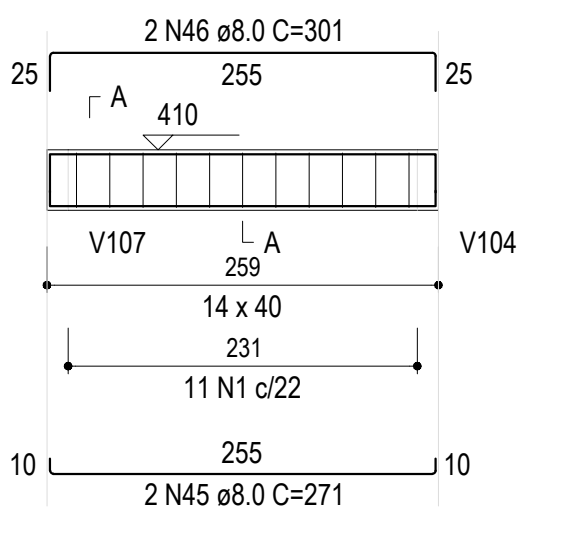
SEÇÃO A-A

ESC 1:30



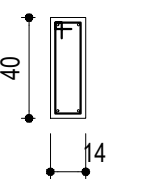
V148 (14 x 40)

ESC 1:50



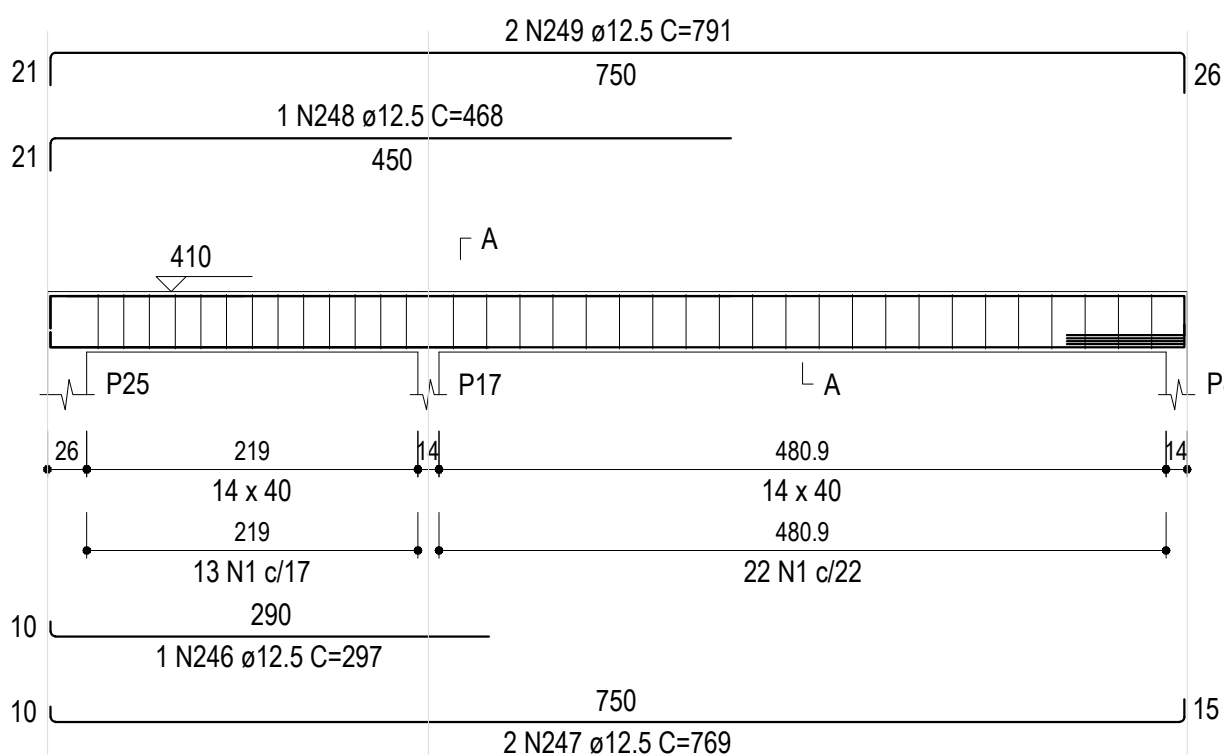
SEÇÃO A-A

ESC 1:30



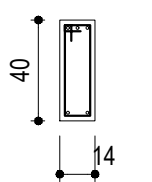
V149 (14 x 40)

ESC 1:50



SEÇÃO A-A

ESC 1:30



GAMA-Z ENGENHARIA LTDA | CREA-RS 249.562
Dieter & Schiefelbein
TEL.: (55) 99159-8247 | (55) 99164-5529
engenheiro.andres@gmail.com
eng.edmilsondieter@gmail.com

PROJETOS INTEGRADOS

NATUREZA DO PROJETO

36 PROJETO ESTRUTURAL

ENDEREÇO

BAIRRO CHÁCARA IBIRUBÁ RS

CONTEÚDO

DETALHAMENTO VIGAS COBERTURA

PROPRIETÁRIO

PREFEITURA MUNICIPAL DE IBIRUBÁ
CAPS - Bairro Chácara

EDMILSON
DIETER:00043470050

Assinado de forma digital por
EDMILSON DIETER:00043470050
Dados: 2025.02.20 12:00:53
-03'00'

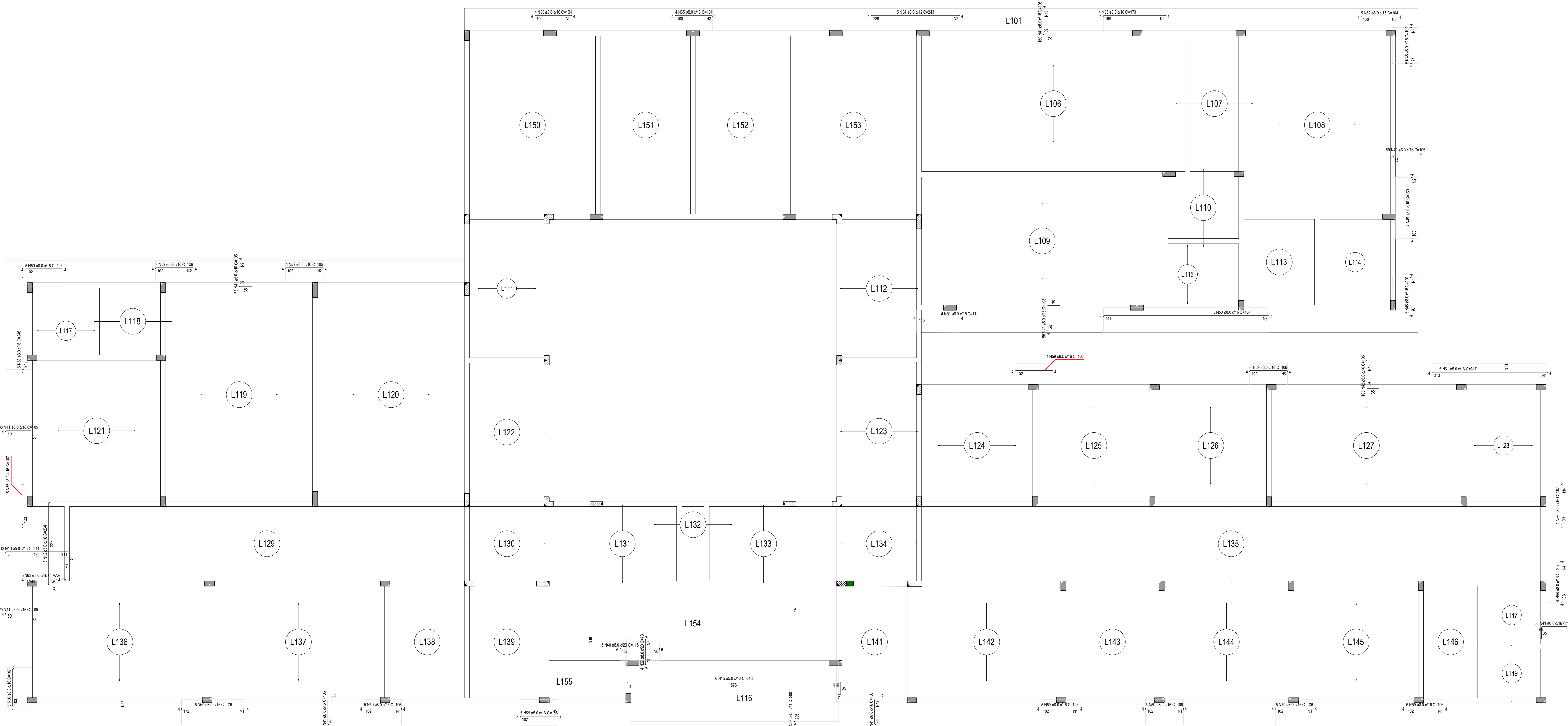
RESP. TÉCNICO

DATA
Outubro/2023

ESCALA
INDICADA

FOLHA

26



Armação negativa das lajes do pavimento Primeiro Pavimento
escala 1:40

RESUMO DO AÇO ARMADURA
LAJES MACIÇAS - BEIRAIS

AÇO	DIAM (mm)	C.TOTAL (m)	QUANT + 0% (Barras)	PESO + 0% (kg)
CA50	8.0	362.1	31	142.9
CA60	5.0	2219.2	-	342.1
	6.0	1218.7	-	270.5
PESO TOTAL (kg)				
CA50	142.9			
CA60	612.6			

Volume de concreto (C-25) = 13.00 m³

Área de forma = 144,76 m²

RESUMO DO AÇO ARMADURA LAJESPRE-MOLDADAS

ÁREA de LAJE= 522,0 m²

Volume de concreto (C-25) = 33.06 m³

malha pop distribuição = 104 malhas 2mx3m - Ø4,2mm c/15cm



GAMA-Z ENGENHARIA LTDA | CREA-RS 249.562
Dieter & Schiefelbein
TEL.: (55) 99159-8247 | (55) 99164-5529
engenheiro.andres@gmail.com
eng.edmilsondieter@gmail.com

PROJETOS INTEGRADOS

NATUREZA DO PROJETO

PROJETO ESTRUTURAL

ENDEREÇO

BAIRRO CHÁCARA IBIRUBÁ RS

CONTEÚDO

ARMADURA NEGATIVA LAJES DO
BEIRAL

PROPRIETÁRIO

PREFEITURA MUNICIPAL DE IBIRUBÁ
CAPS - Bairro Chácara

EDMILSON

DIETER:00043470050

Assinado de forma digital por
EDMILSON DIETER:00043470050
Dados: 2025.02.20 12:01:51
-03'00'

RESP. TÉCNICO

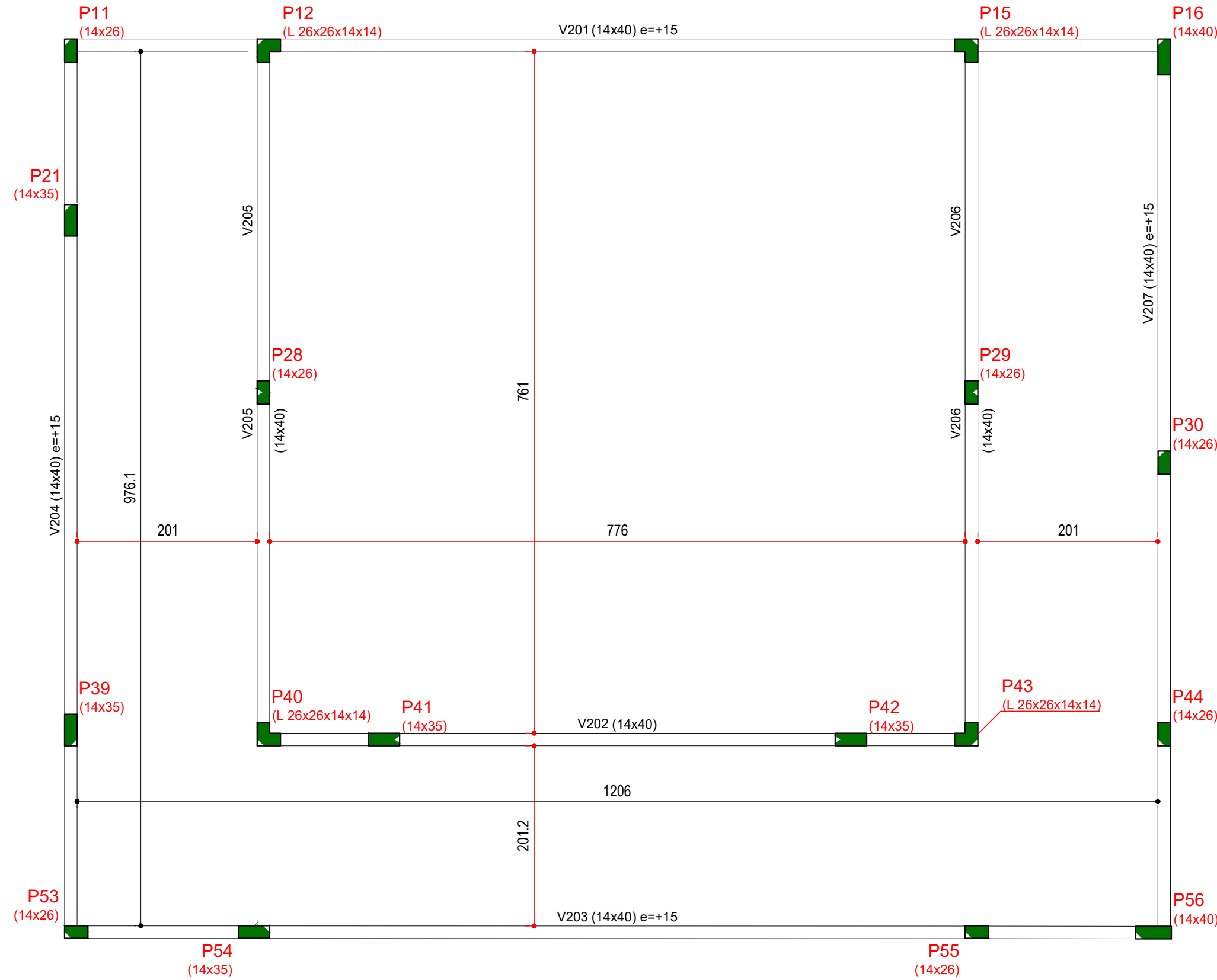
Gama-Z Engenharia Ltda - CREA-RS PJ 249.562
Eng. Civil André Schiefelbein - CREA-RS 093.879
Eng. Civil Edmilson Dieter - CREA-RS 248.655

DATA
Outubro/2023

ESCALA
INDICADA

FOLHA

28



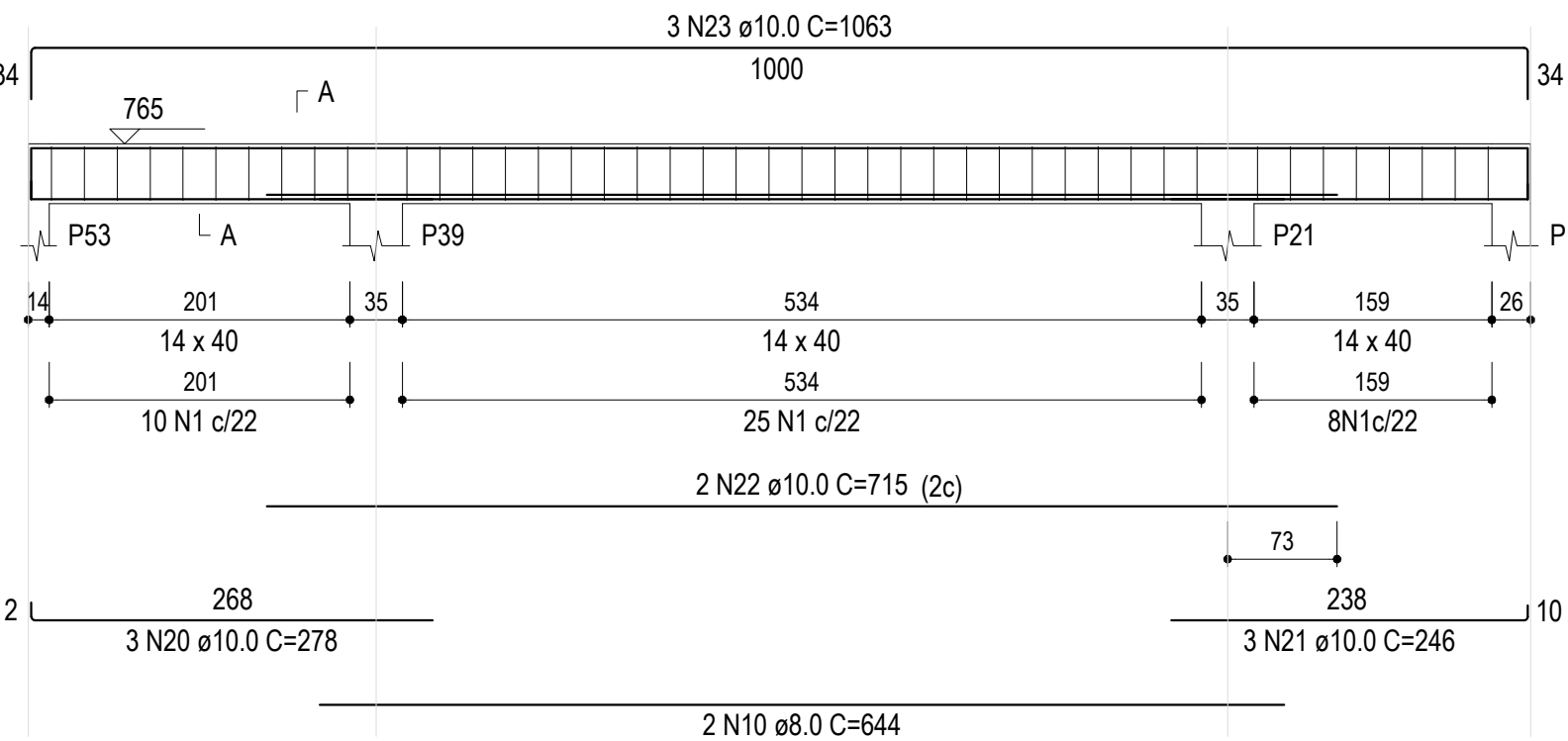
Vigas			
Nome	Seção (cm)	Elevação (cm)	Nível (cm)
V201	14x40	15	765
V202	14x40	0	750
V203	14x40	15	765
V204	14x40	15	765
V205	14x40	0	750
V206	14x40	0	750
V207	14x40	15	765

Forma Caixa d'água (Nível 750)
escala 1:50

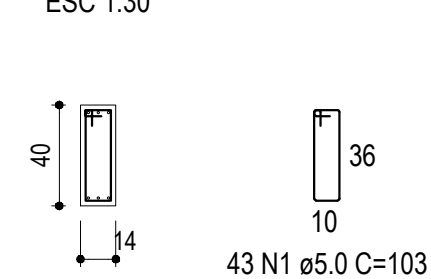
Características dos materiais			
fck (kgf/cm²)	Ecs (kgf/cm²)	fct (kgf/cm²)	Abatimento (cm)
250	241500	26	5.00

Dimensão máxima do agregado = 19 mm

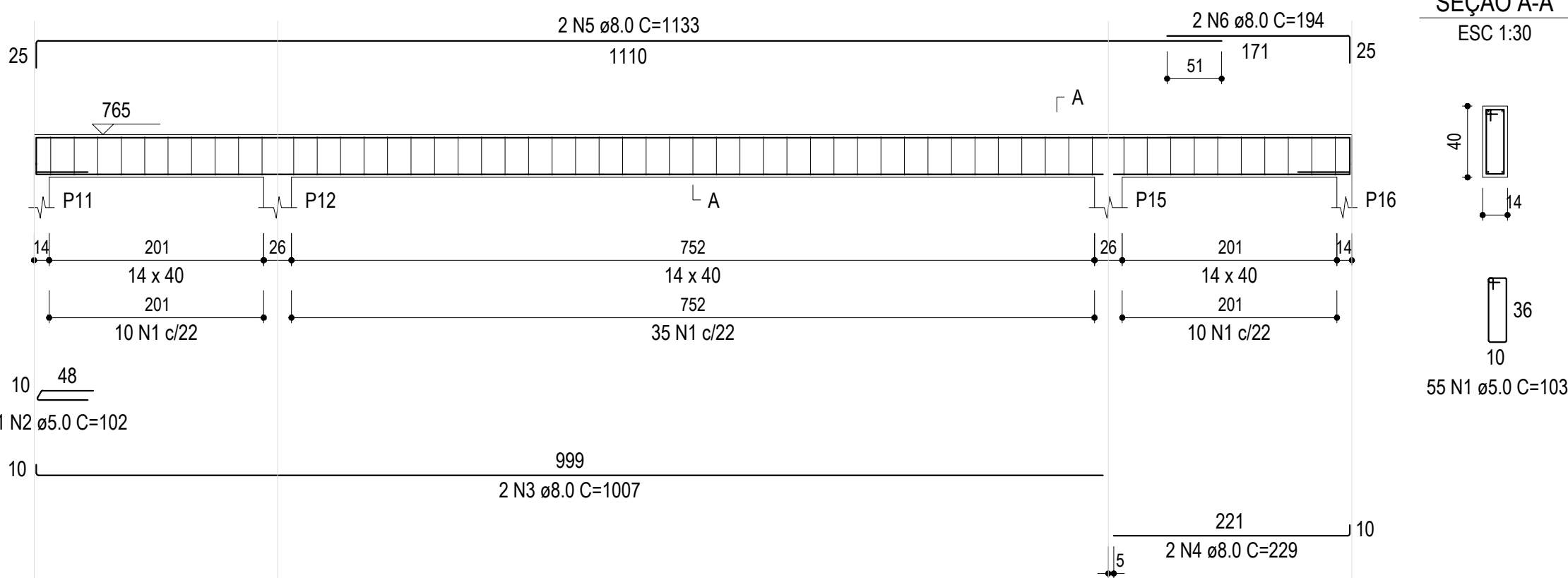
V204 (14 x 40)
ESC 1:50



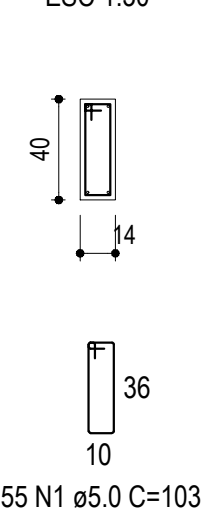
SEÇÃO A-A
ESC 1:30



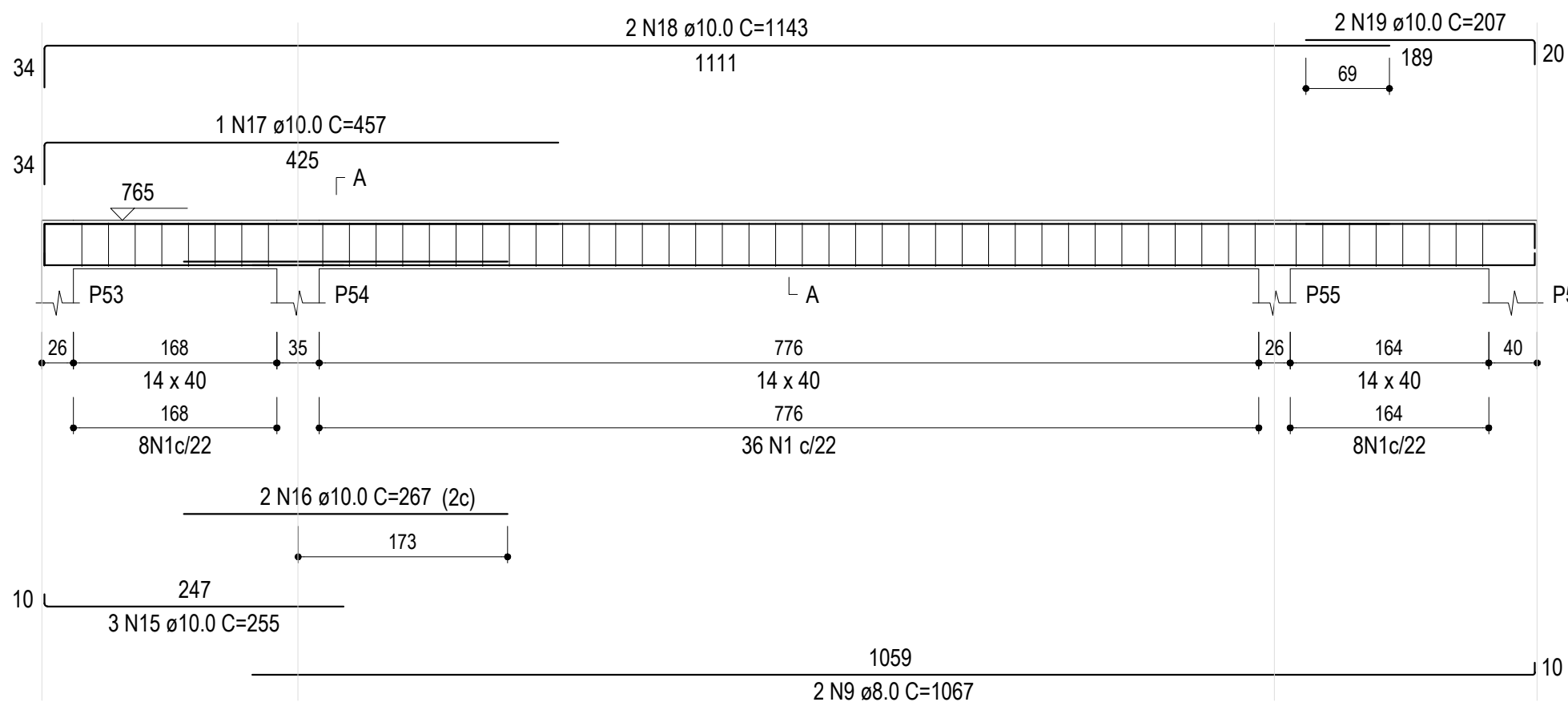
V201 (14 x 40)
ESC 1:50



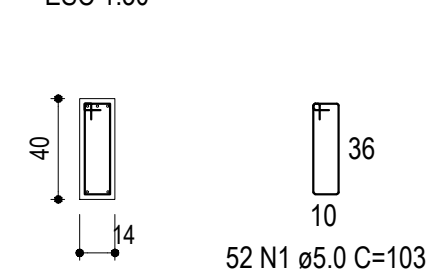
SEÇÃO A-A
ESC 1:30



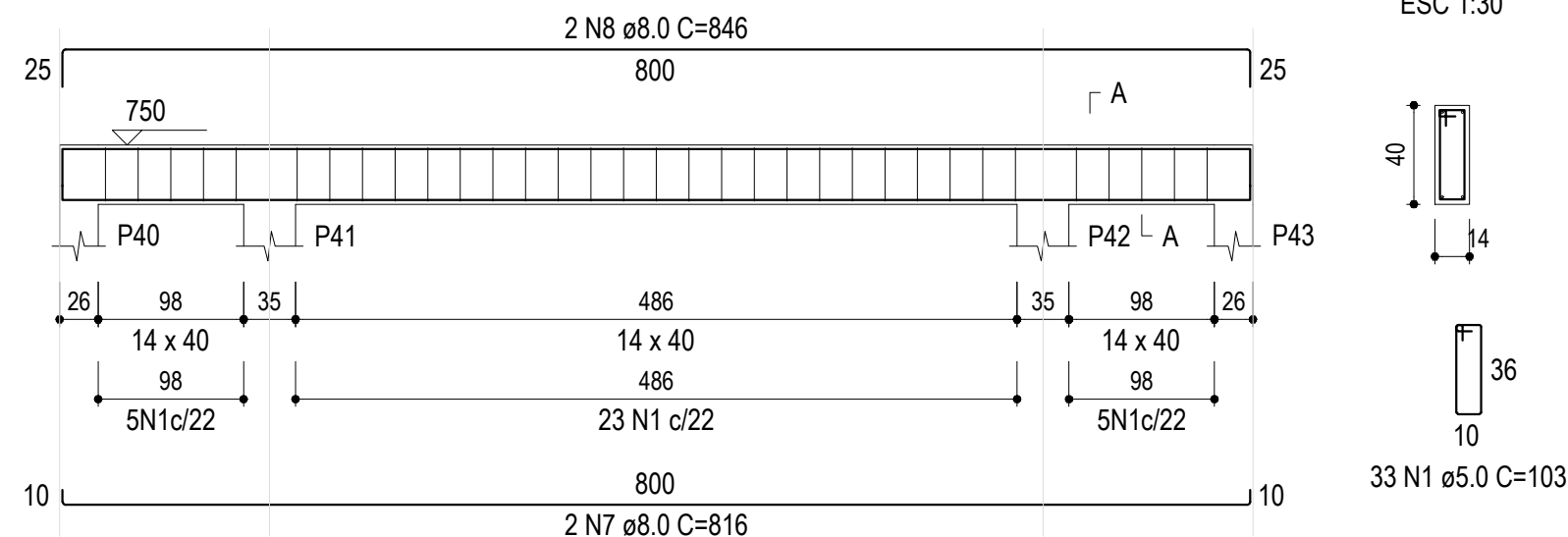
V203 (14 x 40)
ESC 1:50



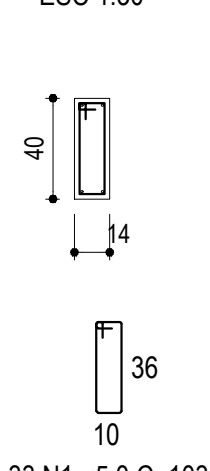
SEÇÃO A-A
ESC 1:30



V202 (14 x 40)
ESC 1:50



SEÇÃO A-A
ESC 1:30



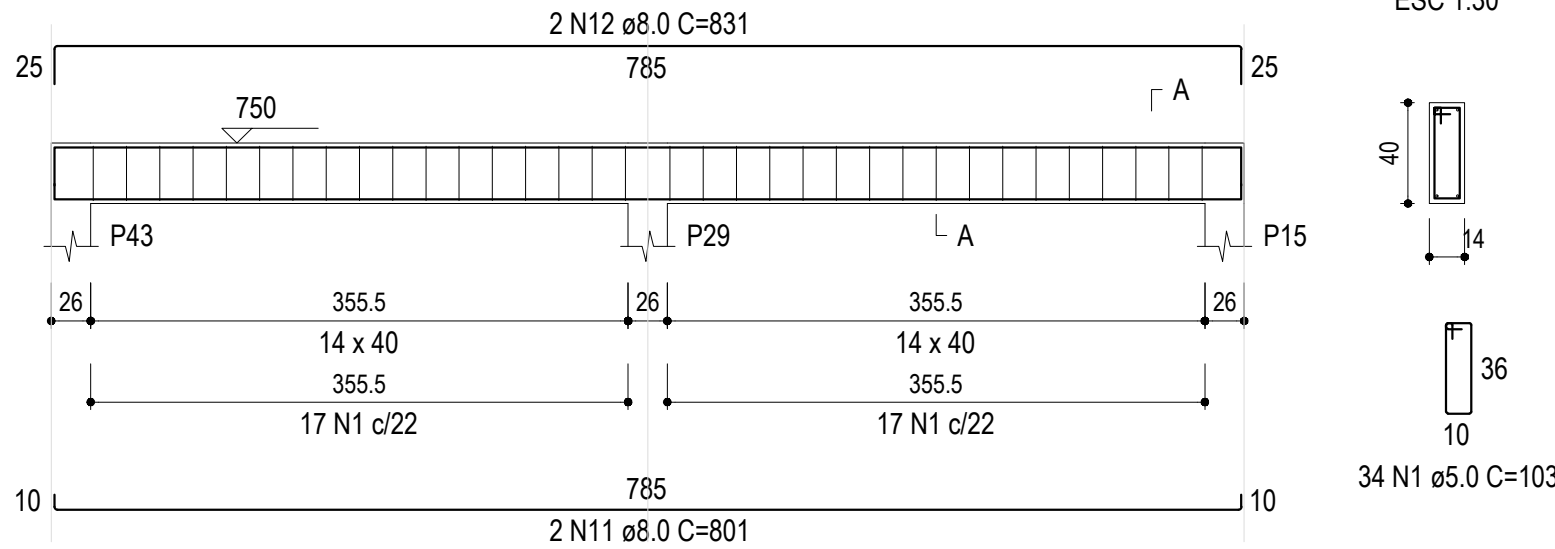
RESUMO DO AÇO VIGAS TETO
RESERVATÓRIO

AÇO	DIAM (mm)	C.TOTAL (m)	QUANT + 0% (Barras)	PESO + 0% (kg)
CA50	8.0	225.3	19	88.9
CA60	10.0	106.5	9	65.6
CA60	5.0	305.9	-	47.1
PESO TOTAL (kg)				
CA50	154.5			
CA60	47.1			

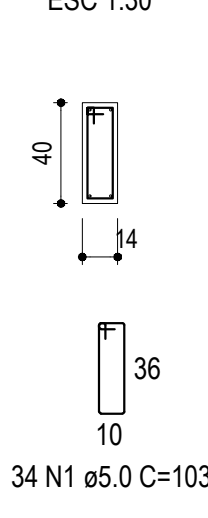
Volume de concreto (C-25) = 3.84 m³

Área de forma = 64.48 m²

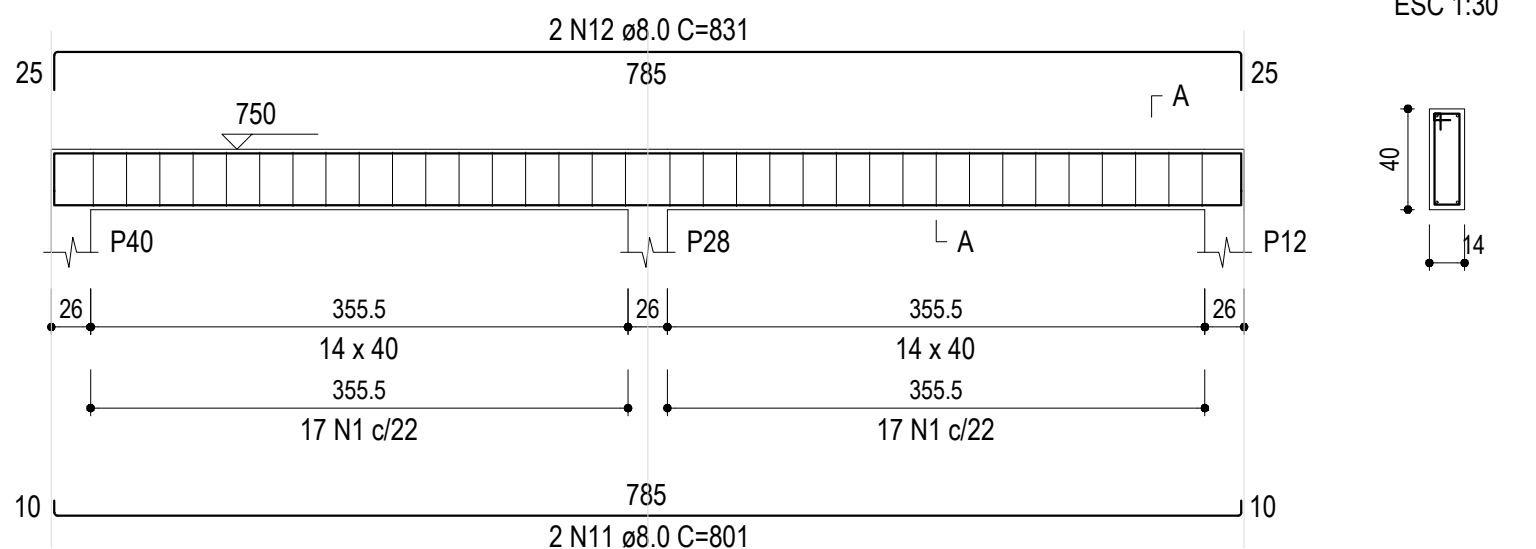
V206 (14 x 40)
ESC 1:50



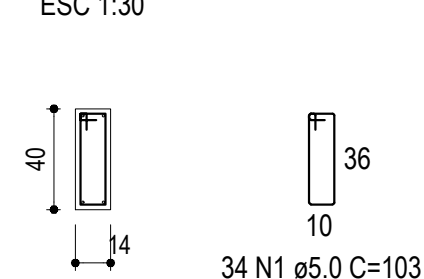
SEÇÃO A-A
ESC 1:30



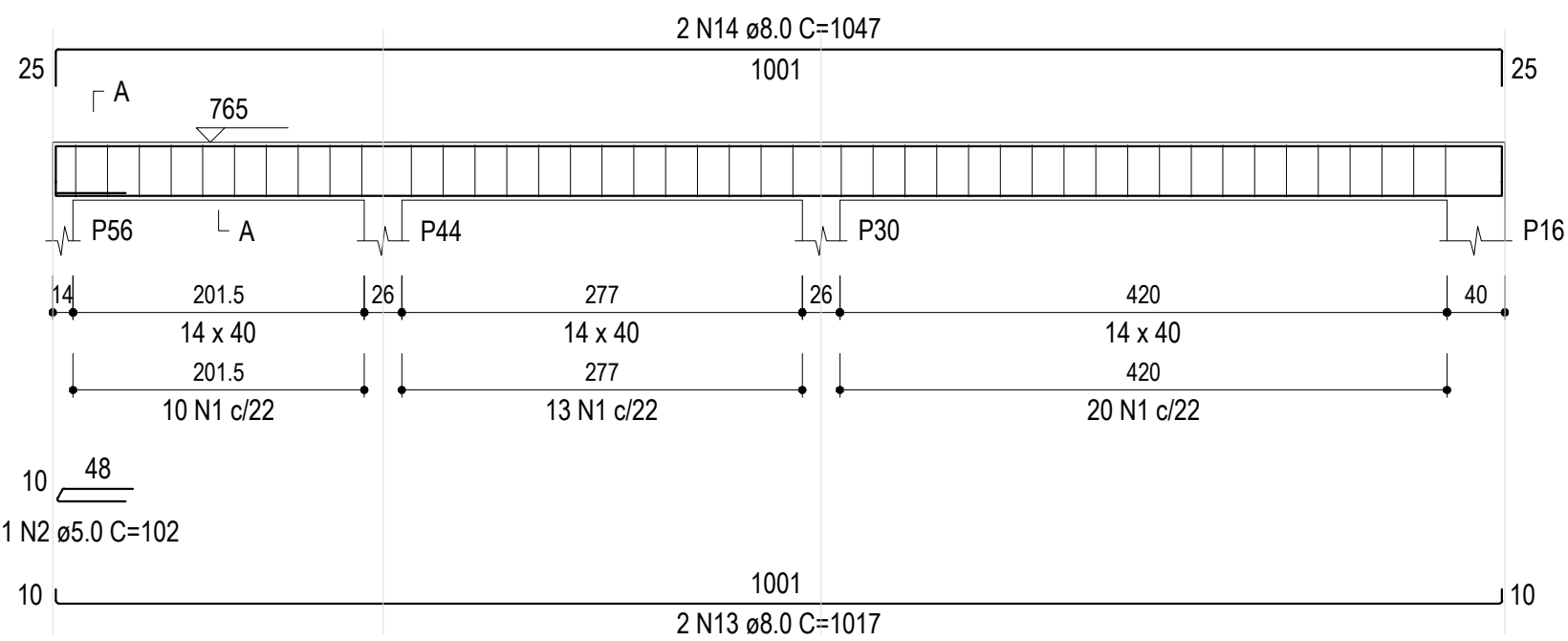
V205 (14 x 40)
ESC 1:50



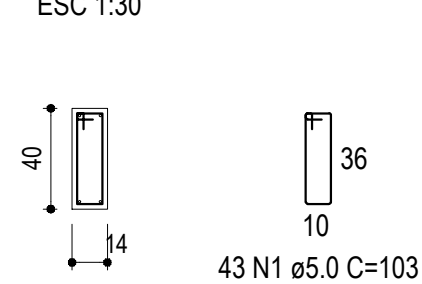
SEÇÃO A-A
ESC 1:30



V207 (14 x 40)
ESC 1:50



SEÇÃO A-A
ESC 1:30



GAMA-Z ENGENHARIA LTDA | CREA-RS 249.562
Dieter & Schiefelbein
TEL.: (55) 99159-8247 | (55) 99164-5529
engenheiro.andres@gmail.com
eng.edmilsondieter@gmail.com

PROJETOS INTEGRADOS

NATUREZA DO PROJETO

PROJETO ESTRUTURAL

ENDEREÇO

BAIRRO CHÁCARA IBIRUBÁ RS

CONTEÚDO

**FORMA E VIGAS DO TETO
RESERVATÓRIO**

PROPRIETÁRIO

**PREFEITURA MUNICIPAL DE IBIRUBÁ
CAPS - Bairro Chácara**

EDMILSON

DIETER:00043470050

Assinado de forma digital por
EDMILSON DIETER:00043470050
Dados: 2025.02.20 12:16:07
-03'00'

RESP. TÉCNICO

Gama-Z Engenharia Ltda - CREA-RS PJ 249.562
Eng. Civil André Schiefelbein - CREA-RS 093.879
Eng. Civil Edmilson Dieter - CREA-RS 248.655

DATA
Outubro/2023

ESCALA
INDICADA

FOLHA

29