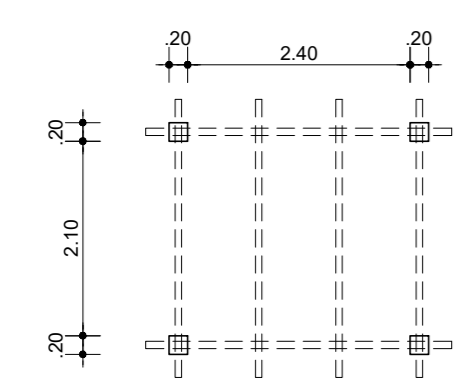
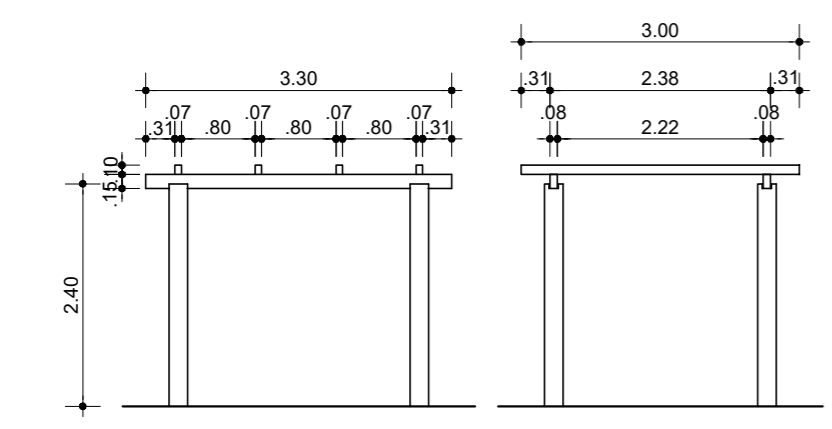
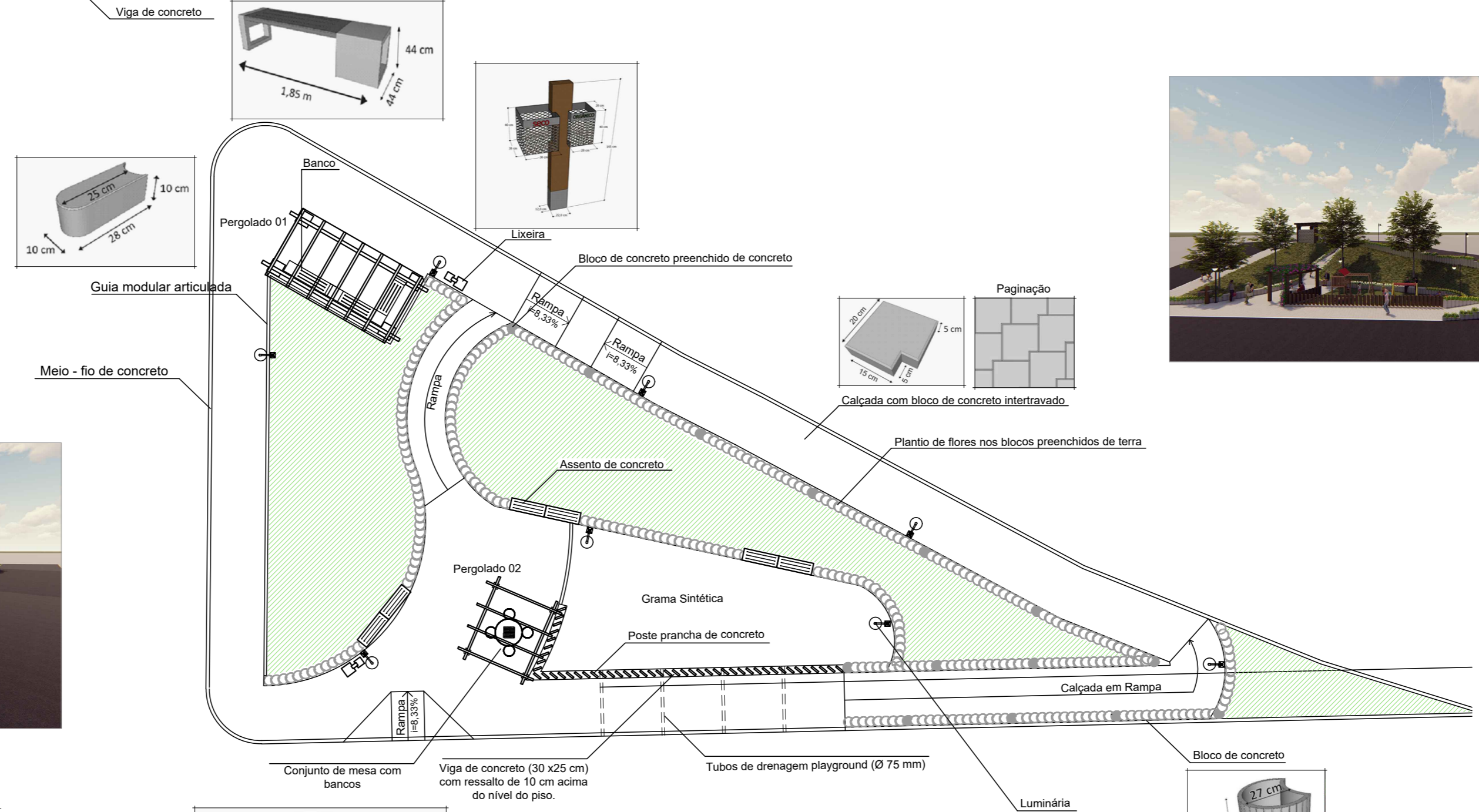
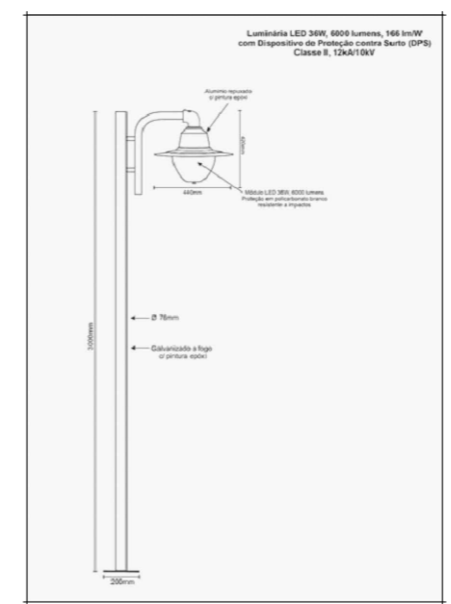
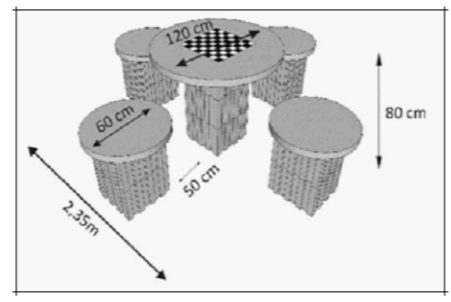
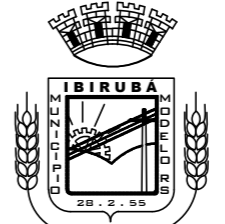


PERGOLADO 01



PERGOLADO 02





MUNICÍPIO DE IBIRUBÁ

PRAÇA DO BAIRRO ODILA

OBRA USO : COMUNITÁRIO LOCALIZAÇÃO : RUA MAUÁ ESQUINA COM A RUA JOÃO THIESEN, BAIRRO ODILA, IBIRUBÁ	PLANTA Projeto arquitetônico	
PROPRIETÁRIO MUNICÍPIO DE IBIRUBÁ	PROJETO ROBERTA SUELEN AHLERT DURIGON ARQUITETA E URBANISTA CAU A-46849-5	EXECUÇÃO
ÁREA 	DESENHO JUL 2022	PRANCHA 2/3