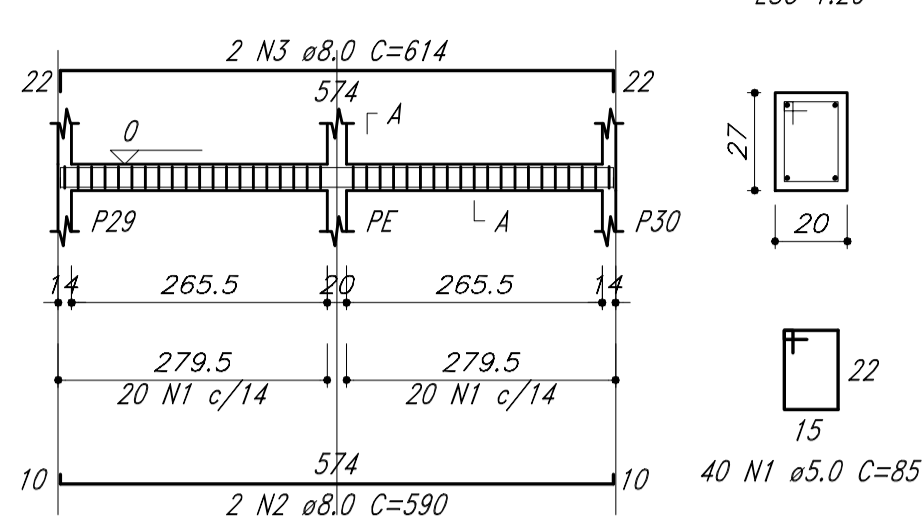
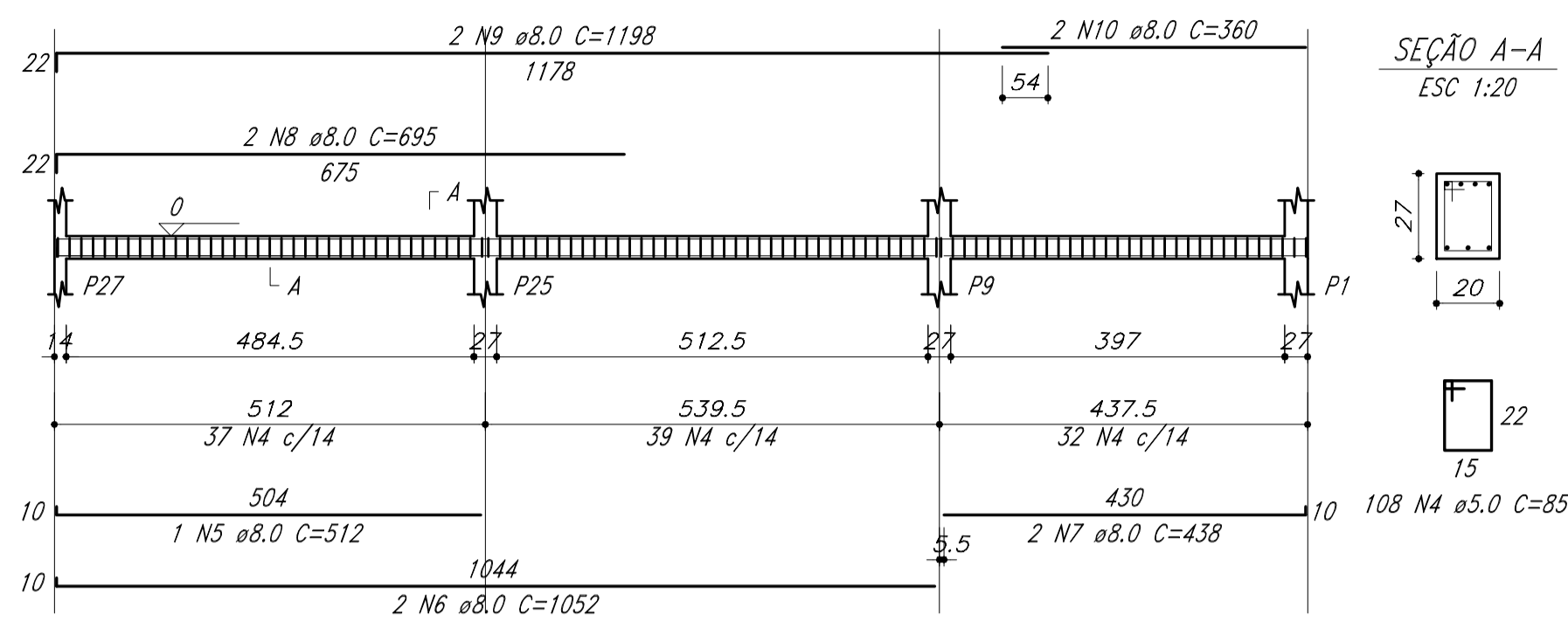


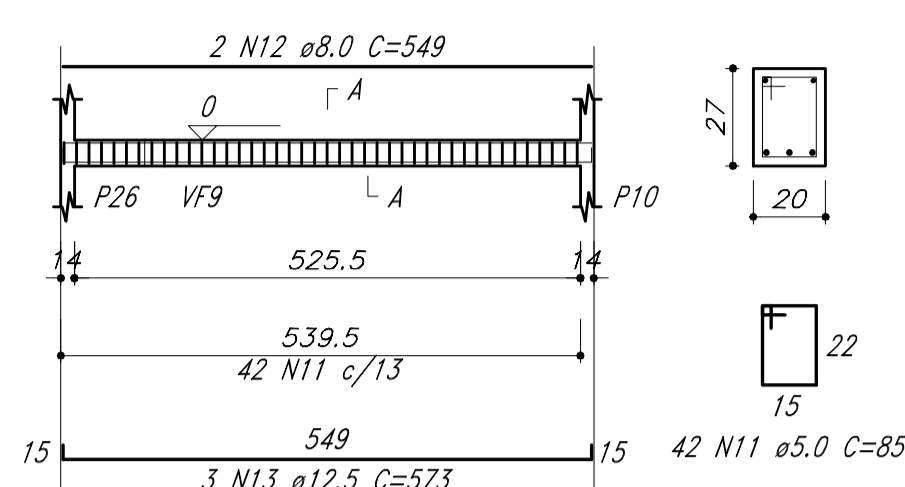
VF13 (20 x 27)
ESC 1:75



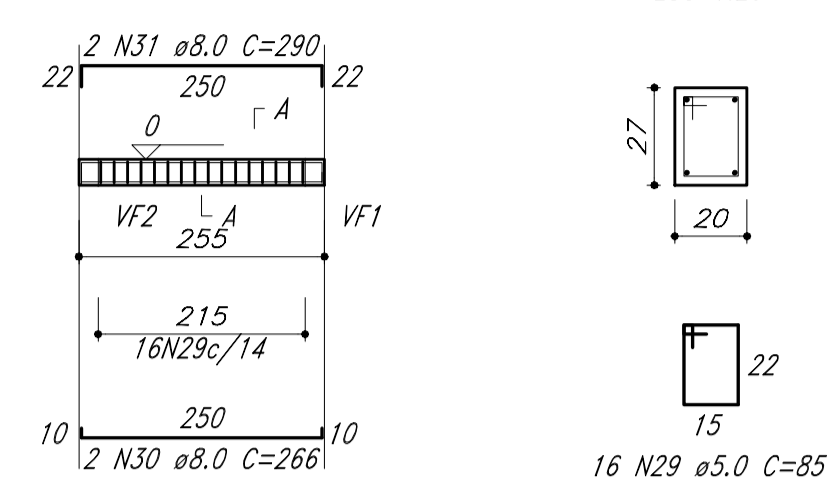
VF14 (20 x 27)
ESC 1:75



VF15 (20 x 27)
ESC 1:75



VF19 (20 x 27)
ESC 1:75

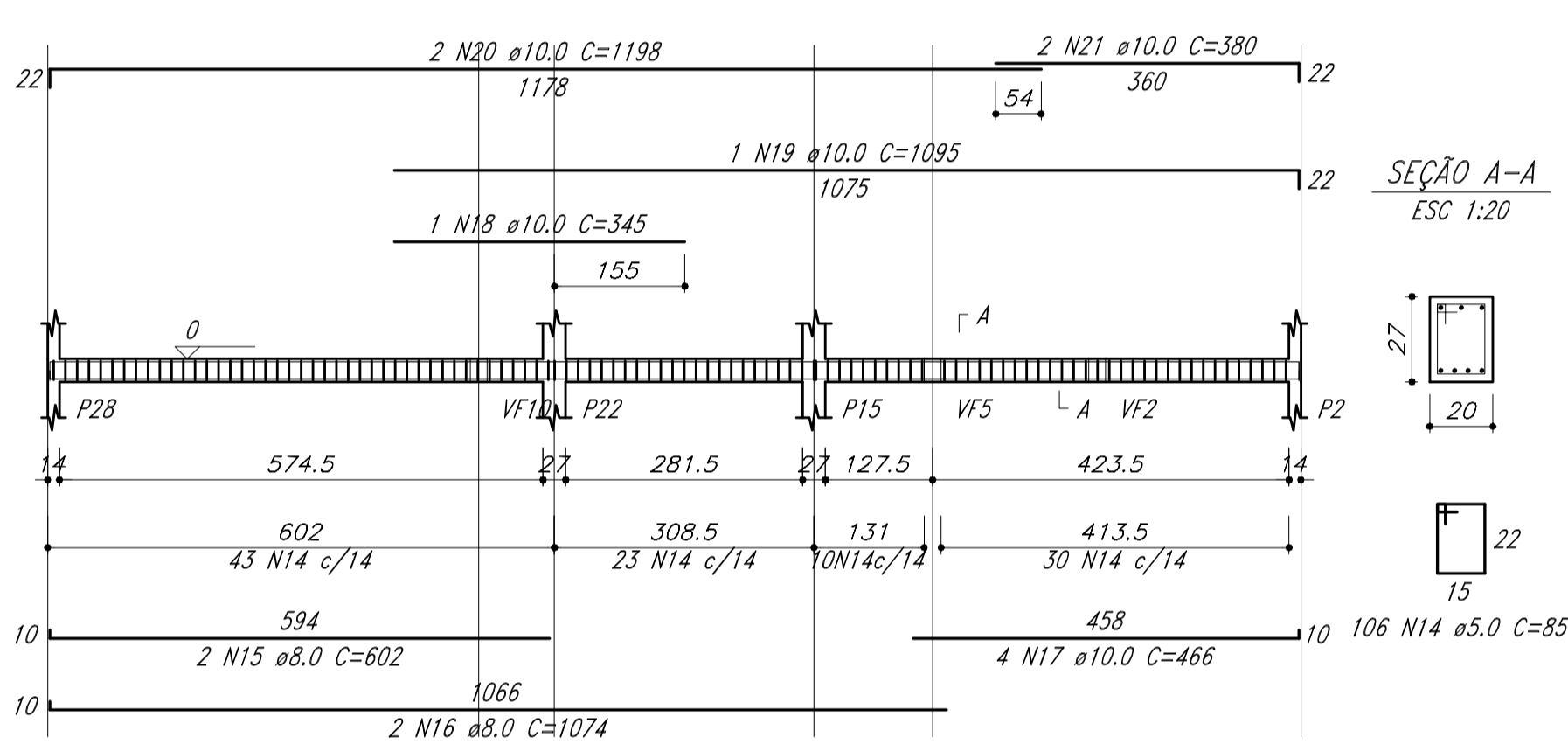


RESUMO DO AÇO

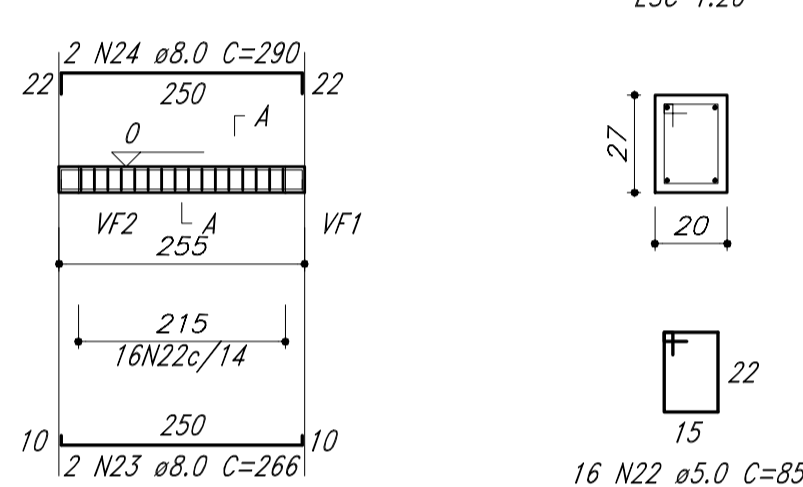
AÇO	DIAM (mm)	C.TOTAL (m)	QUANT + 10% (Barras)
CA50	8.0	364.4	34
	10.0	179.8	17
CA60	12.5	35.3	4
	5.0	622.1	-
PESO TOTAL (kg)			
CA50		317.5	
CA60		105.5	

Volume de concreto (C=30) = 5.57 m³
Área de forma = 76.93 m²

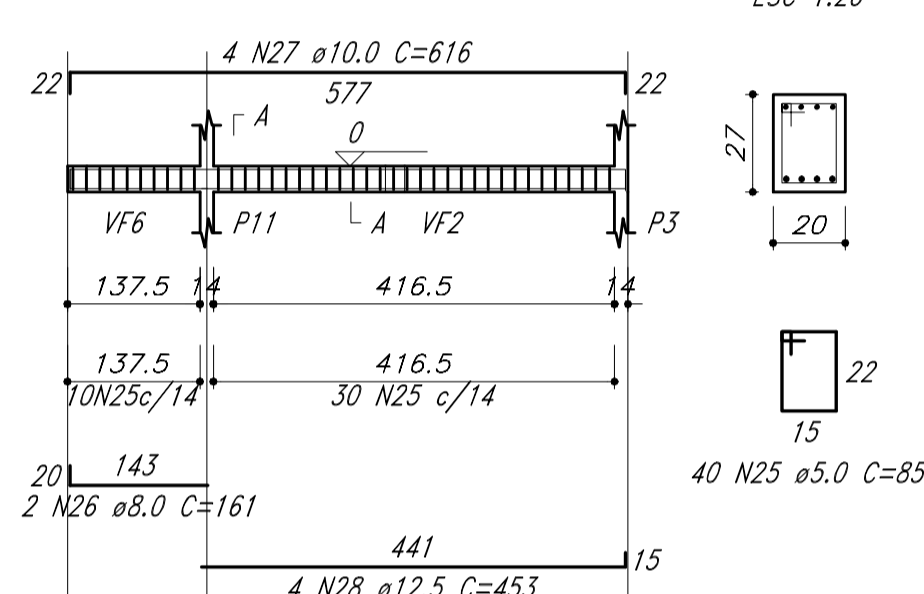
VF16 (20 x 27)
ESC 1:75



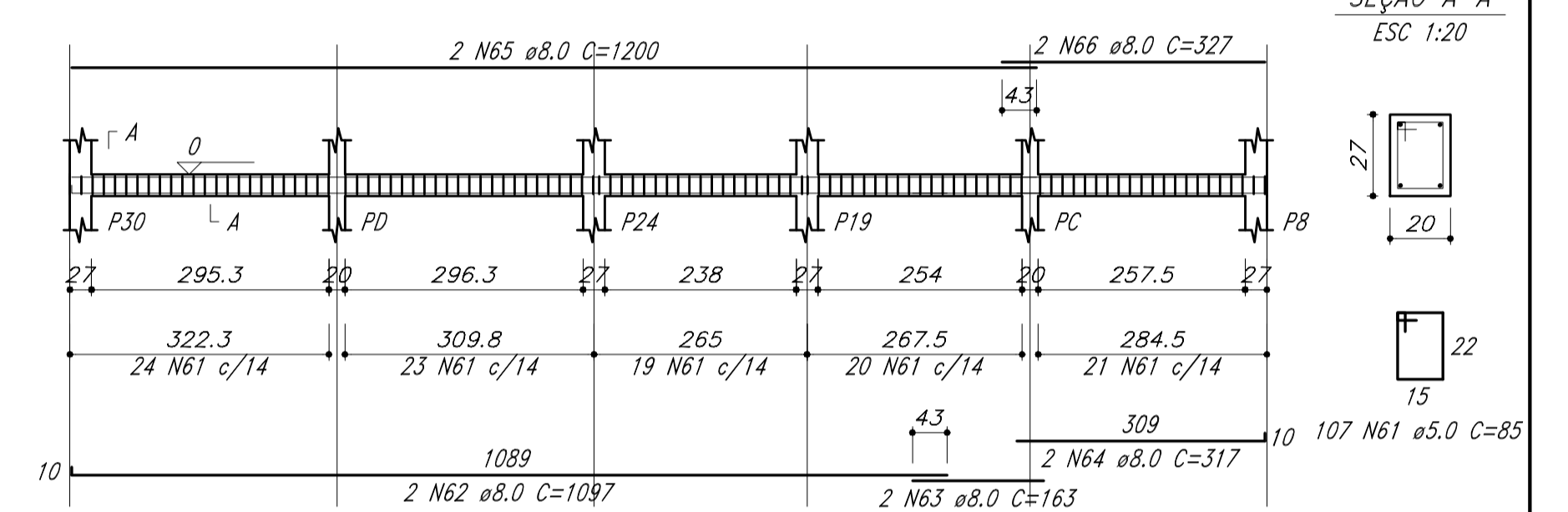
VF17 (20 x 27)
ESC 1:75



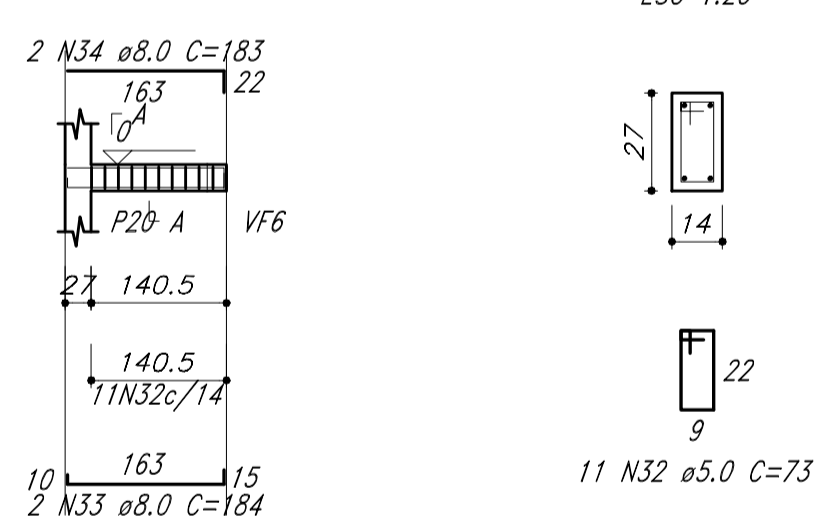
VF18 (20 x 27)
ESC 1:75



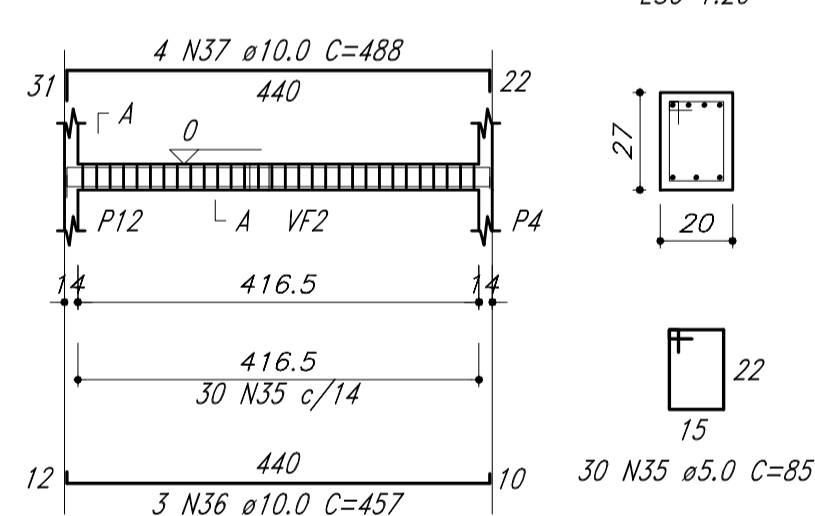
VF28 (20 x 27)
ESC 1:75



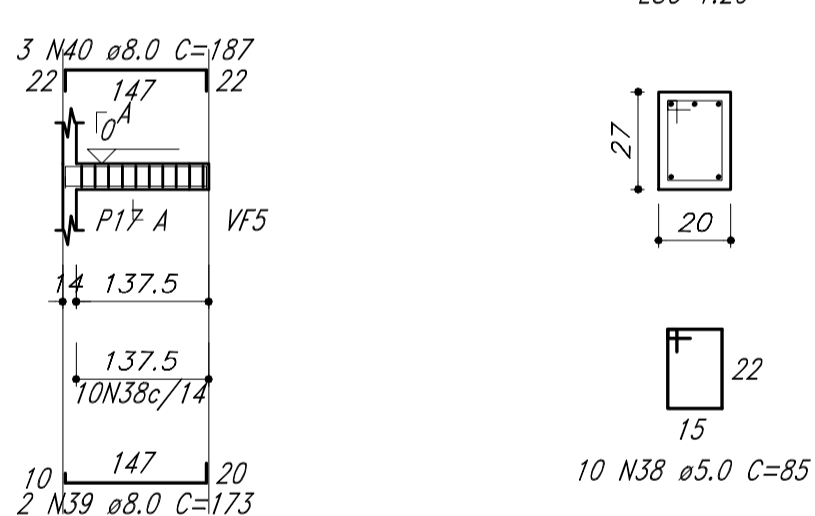
VF20 (14 x 27)
ESC 1:75



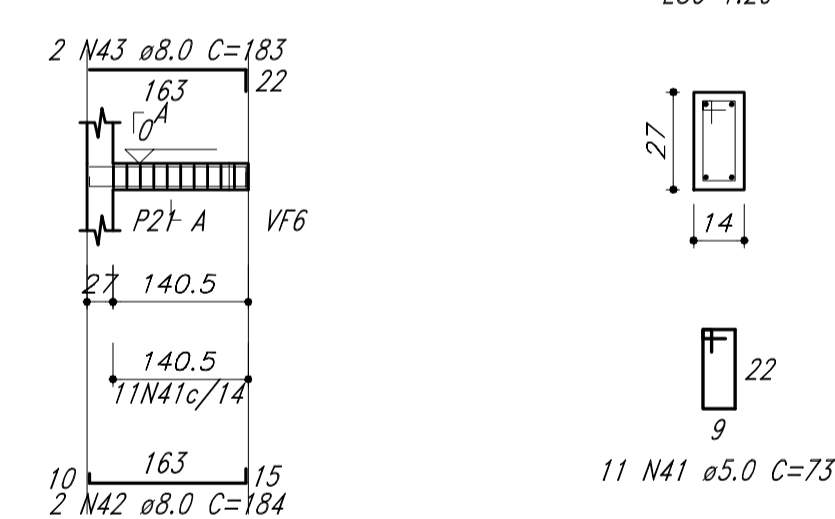
VF21 (20 x 27)
ESC 1:75



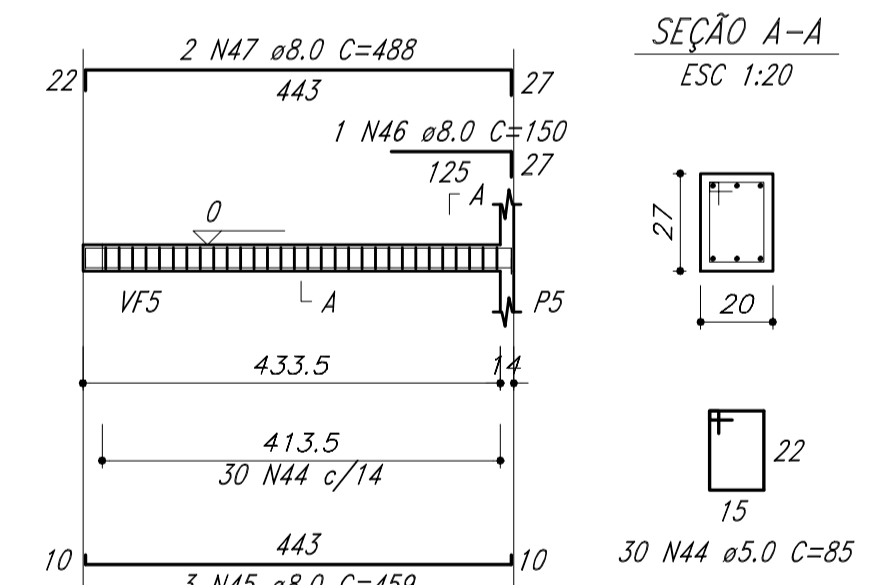
VF22 (20 x 27)
ESC 1:75



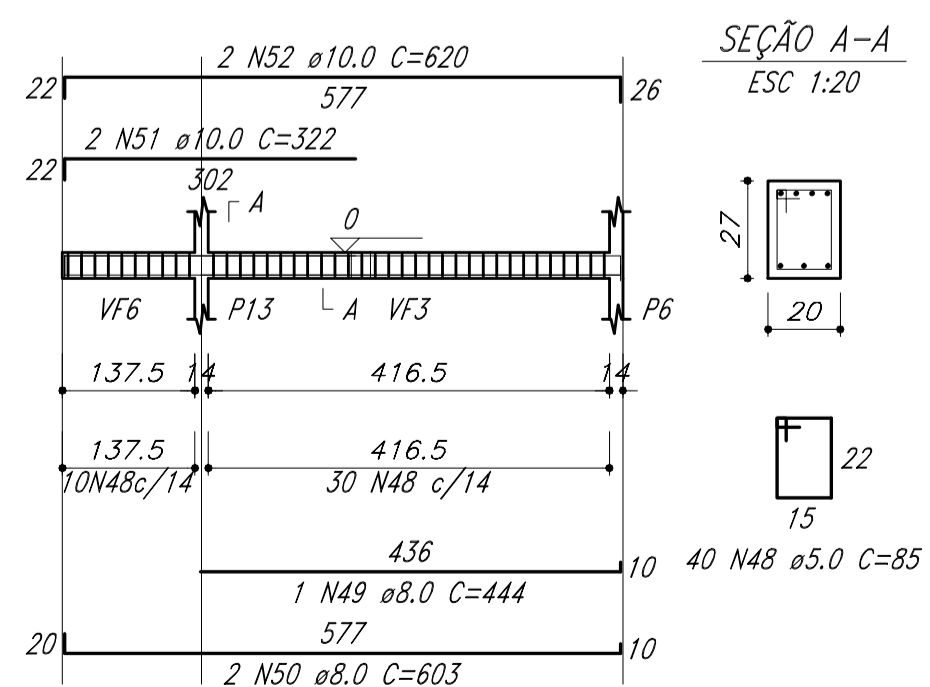
VF23 (14 x 27)
ESC 1:75



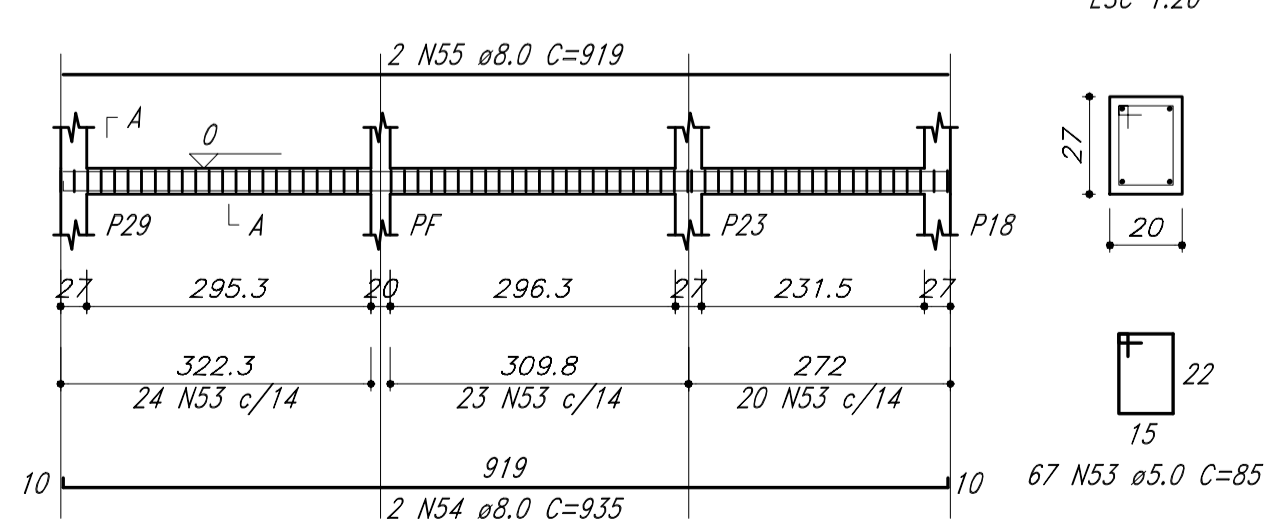
VF24 (20 x 27)
ESC 1:75



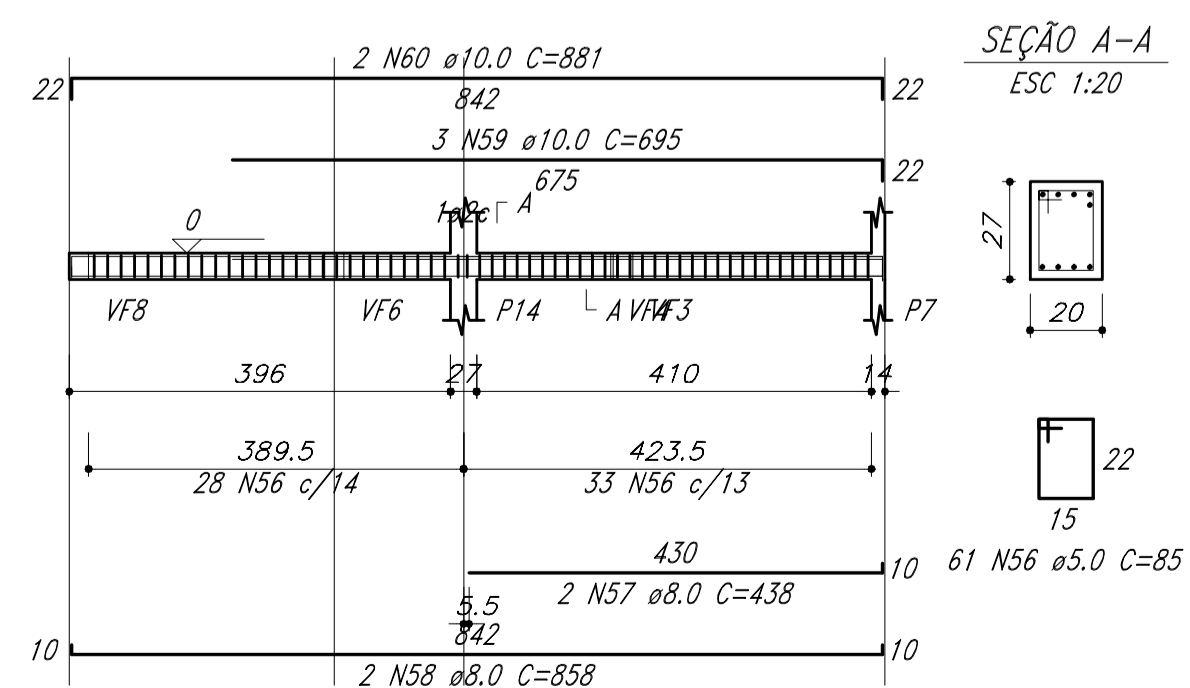
VF25 (20 x 27)
ESC 1:75



VF26 (20 x 27)
ESC 1:75



VF27 (20 x 27)
ESC 1:75



PROPRIETÁRIO:
CRECHE ODILA
IBIRUBA

OBJETO:
VIGAS - PISO FUNDAÇÃO

escala: data:

1/50 NOV/18

PROJETO ESTRUTURAL
Responsável Técnico:
ENG. CIVIL ANDRÉ SCHIEFELBEIN
CREA RS 083.678
CRUZ ALTA RS
Fone: (54) 9137 8056
CEL (50) 9159 8247