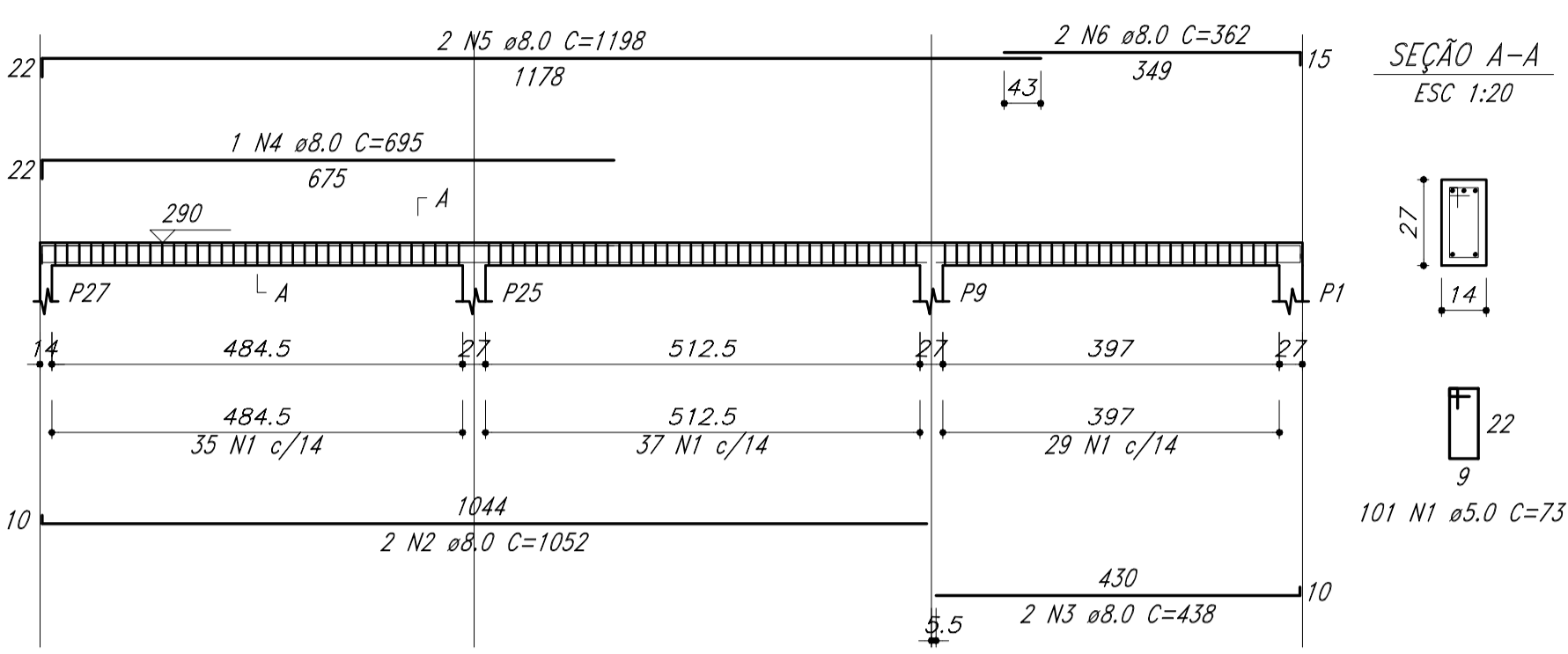
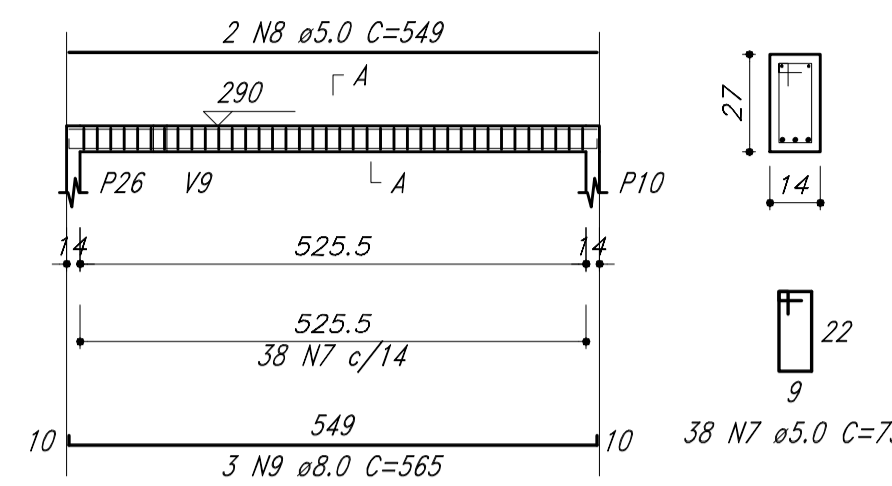


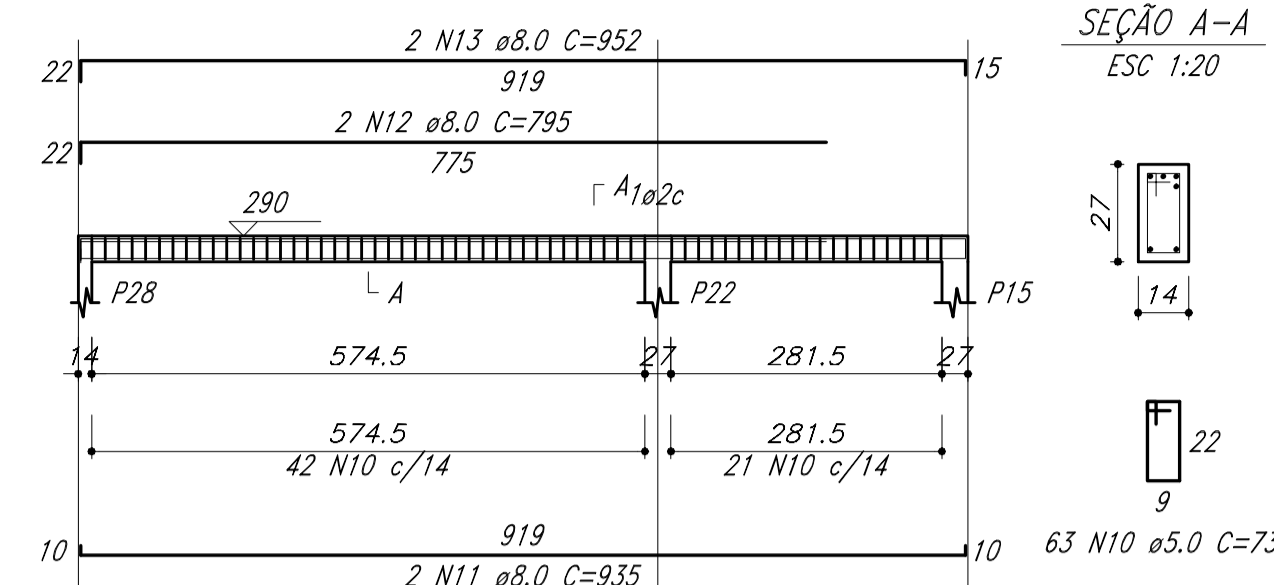
V13 (14 x 27)



V14 (14 x 27)



V15 (14 x 27)



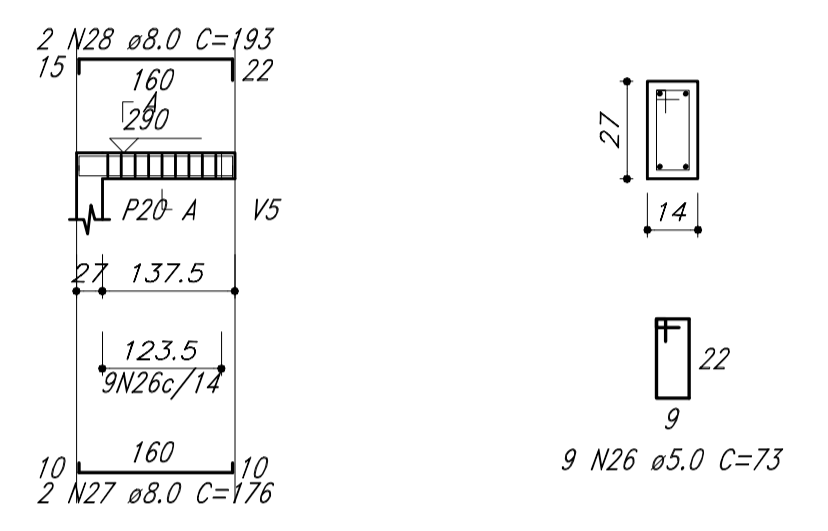
RESUMO DO AÇO

AÇO	DIAM (mm)	C.TOTAL (m)	QUANT + 10% (Barros)
CA50	8.0	454.6	42
CA60	10.0	18.2	2
CA60	5.0	482.6	-

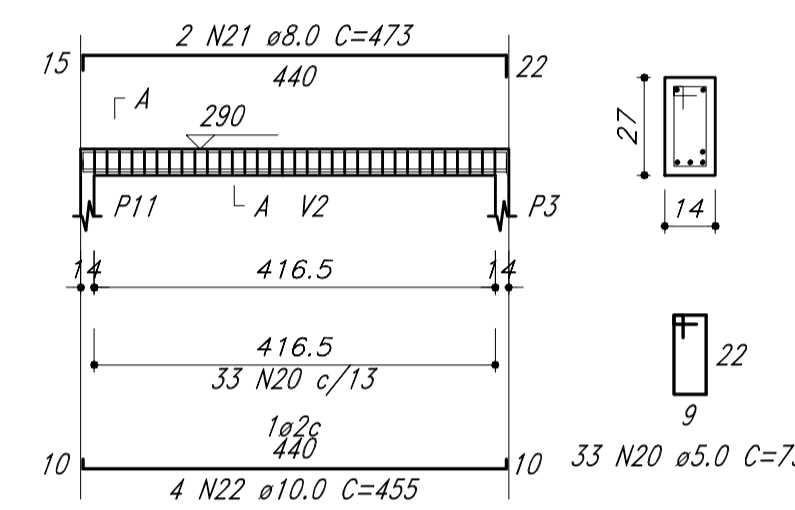
PESO TOTAL (kg)
CA50 209.6
CA60 81.8

Volume de concreto (C-30) = 3.62 m³
Área de forma = 65.08 m²

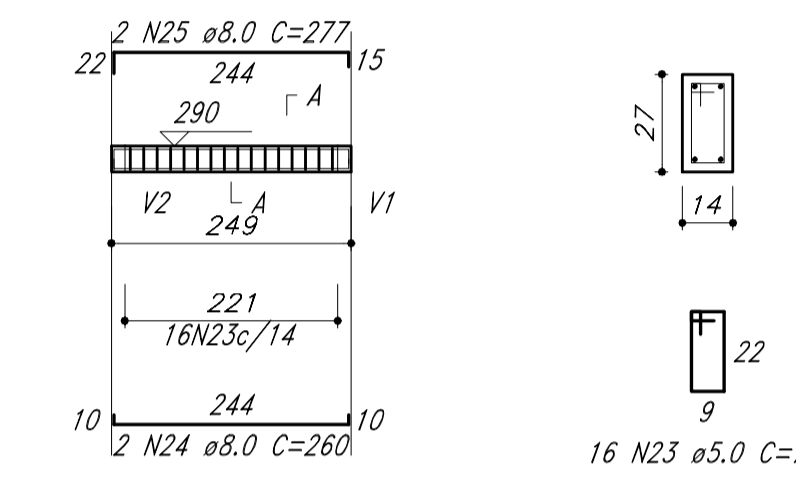
V20 (14 x 27)



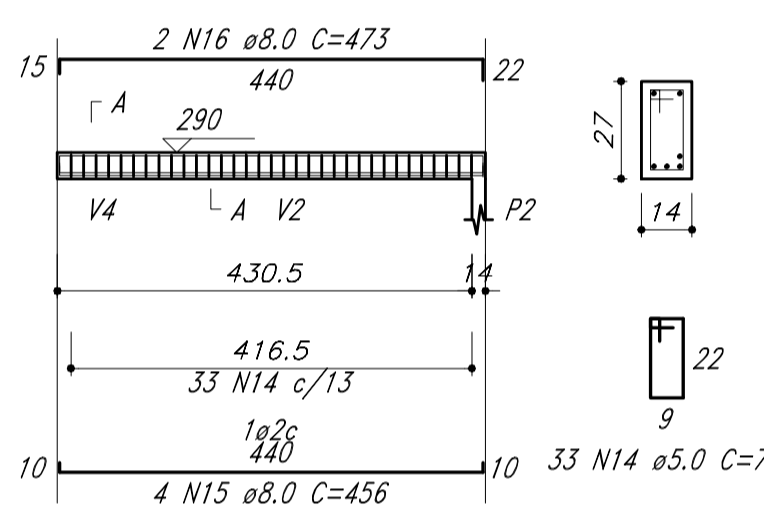
V18 (14 x 27)



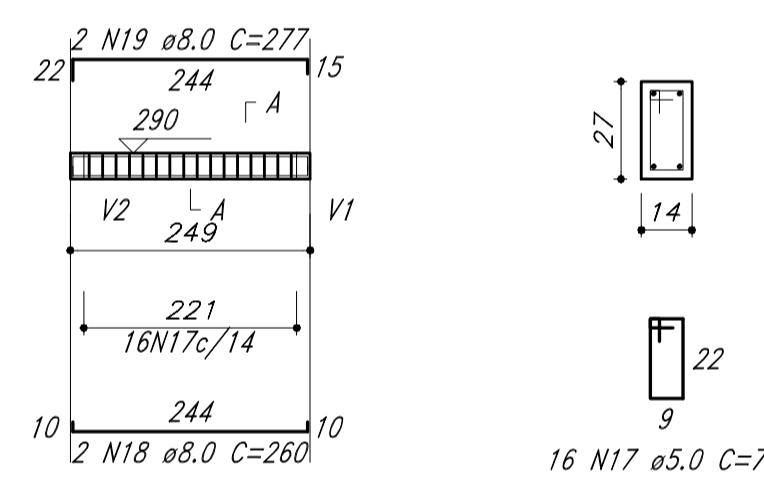
V19 (14 x 27)



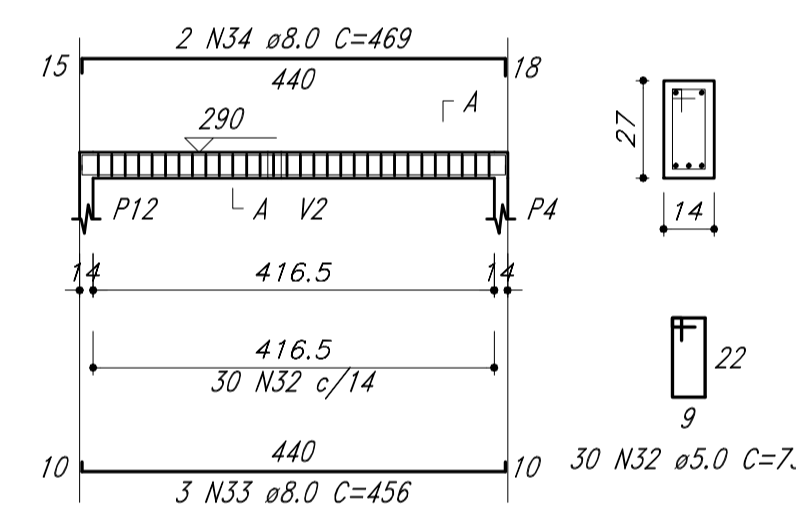
V16 (14 x 27)



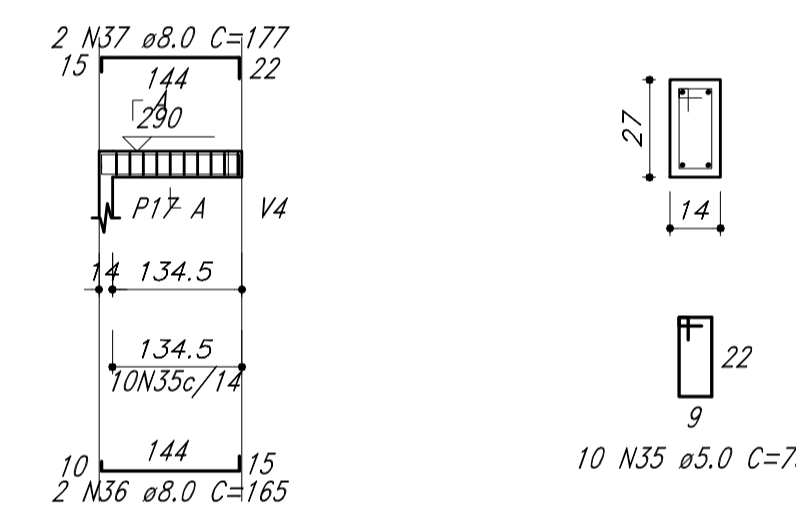
V17 (14 x 27)



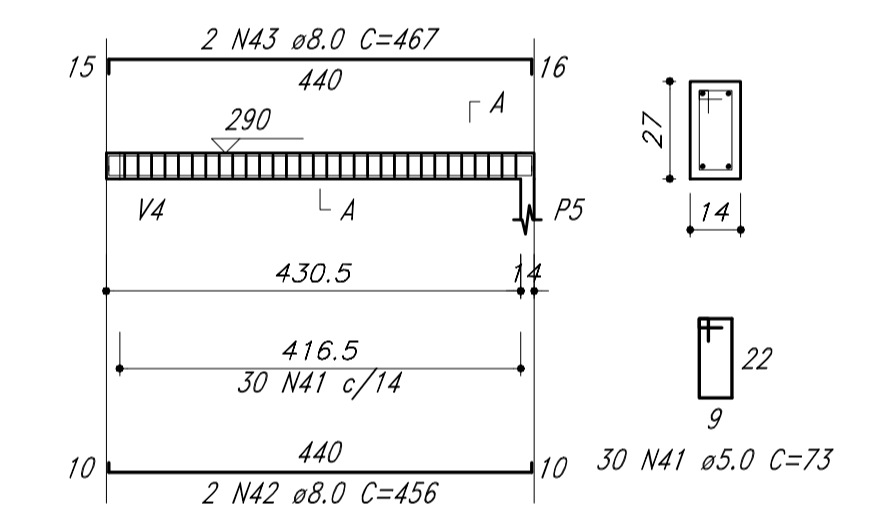
V22 (14 x 27)



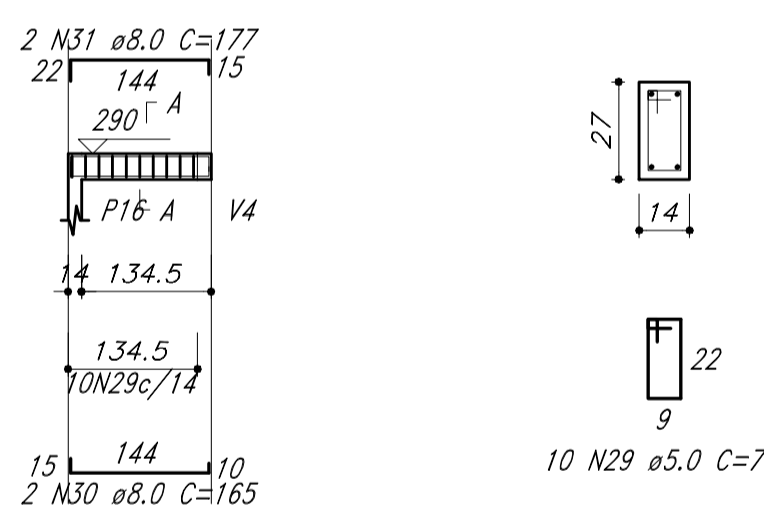
V23 (14 x 27)



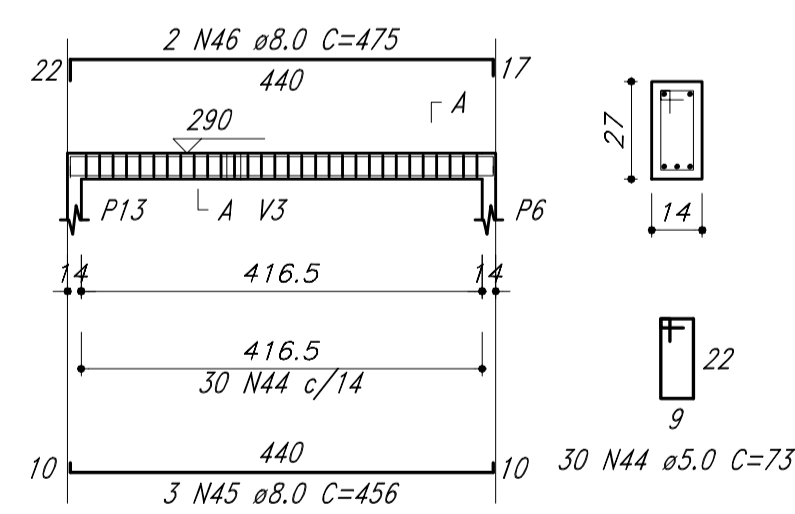
V25 (14 x 27)



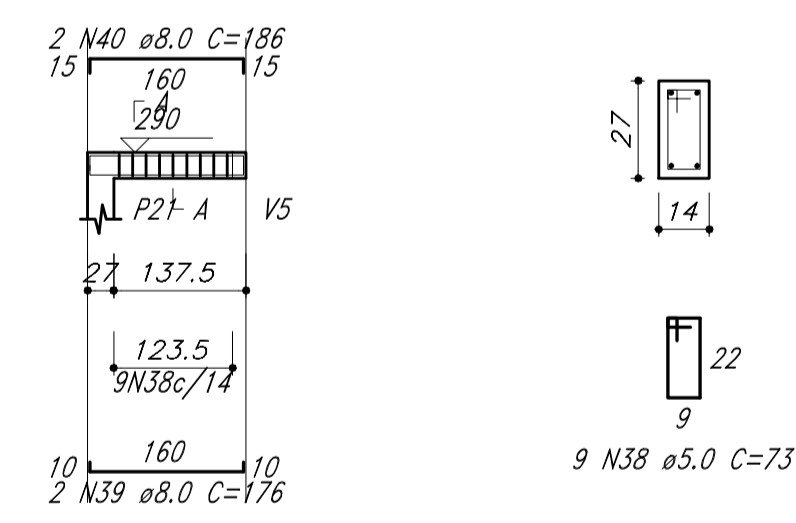
V21 (14 x 27)



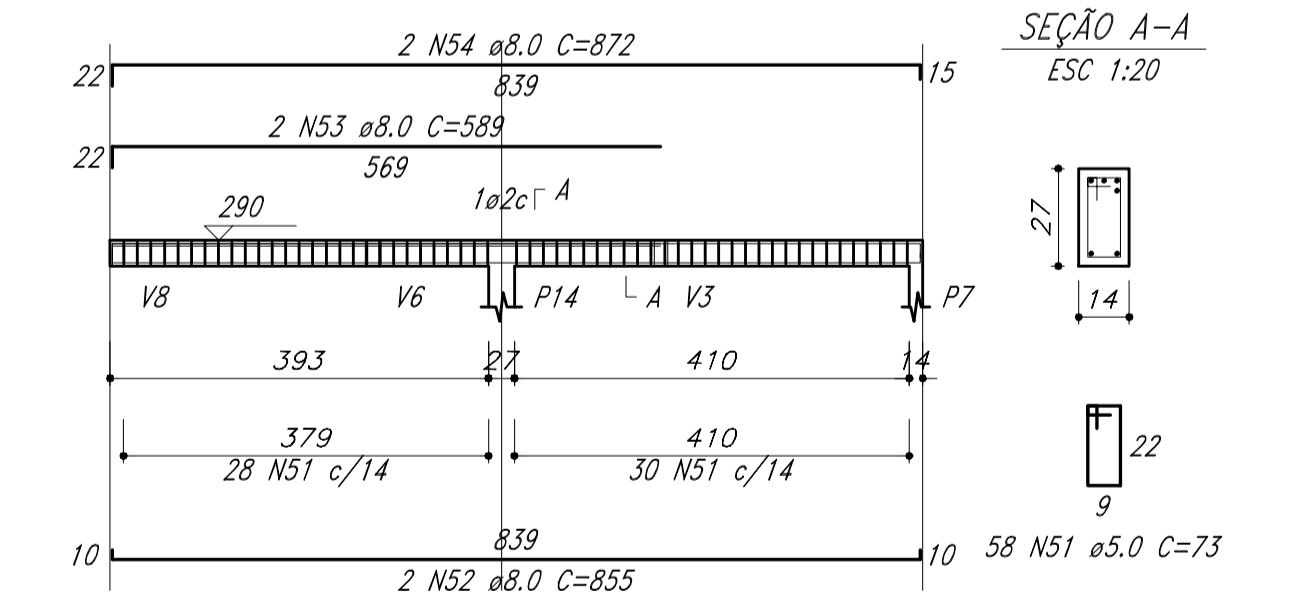
V26 (14 x 27)



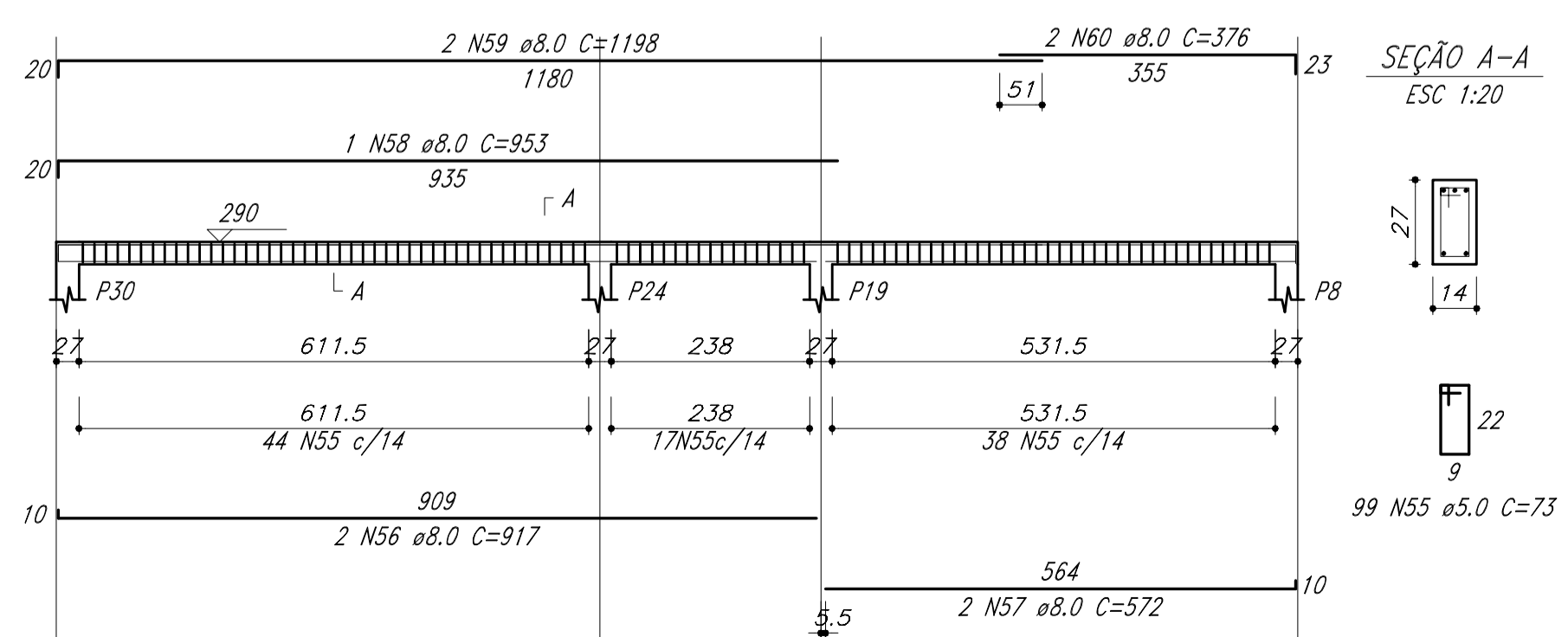
V24 (14 x 27)



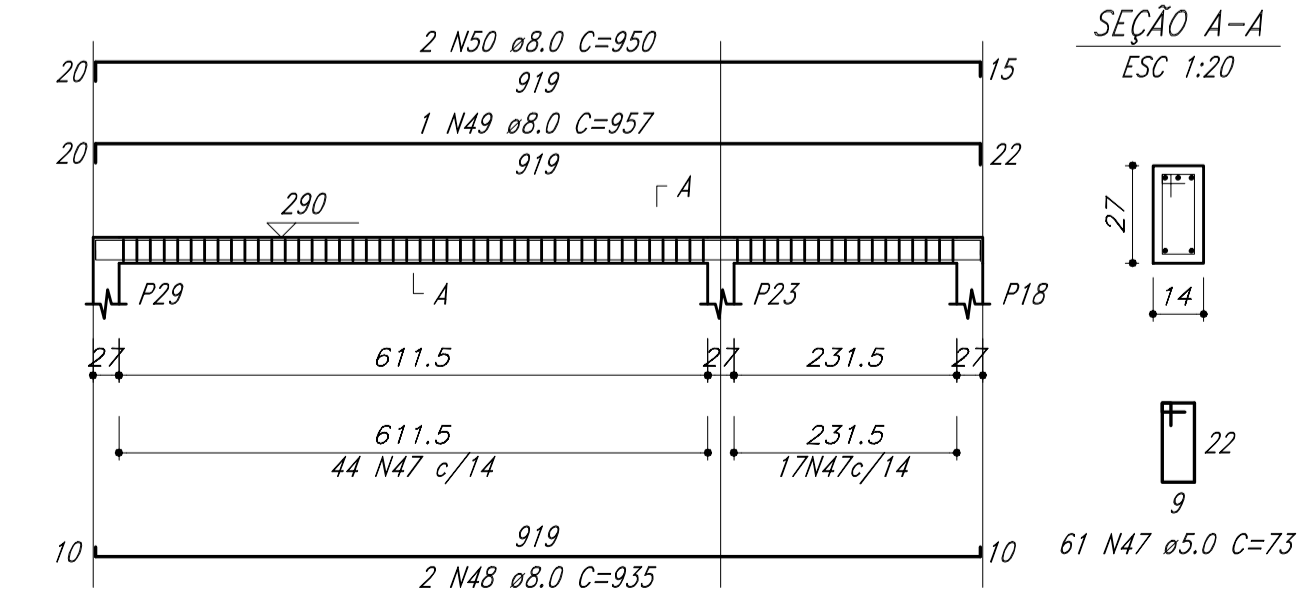
V28 (14 x 27)



V29 (14 x 27)



V27 (14 x 27)



PROPRIETÁRIO:	CRECHE ODILA IBIRUBA
OBJETO:	VIGAS - PISO RESPALDO
DATA:	1/50 NOV/16

PROJETO ESTRUTURAL
Responsável Técnico:
ENG. CIVIL ANDRÉ SCHIEFELBEIN
CREA RS 083.678
CRUZ ALTA RS
Fone: CEL (54) 9137 0656
CEL (51) 9159 8247