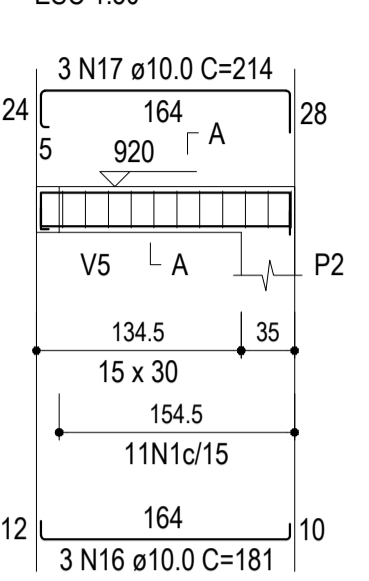
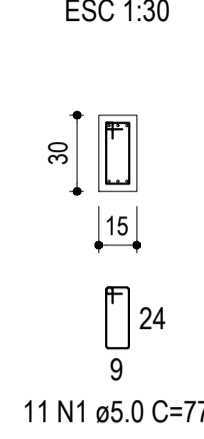


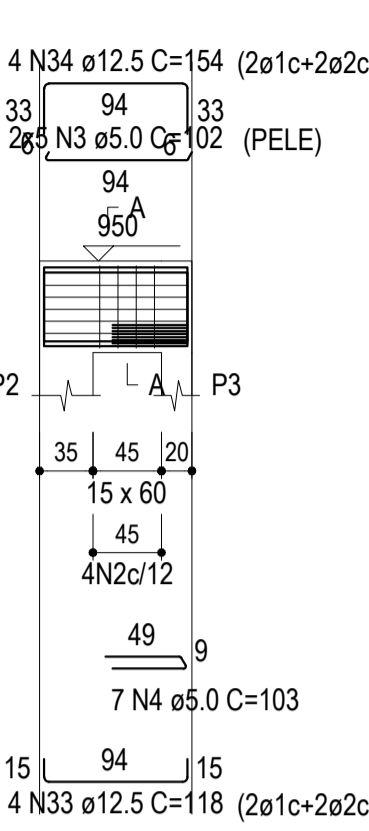
V1 (15 x 30)



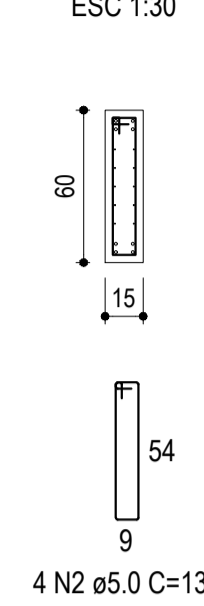
SEÇÃO A-A



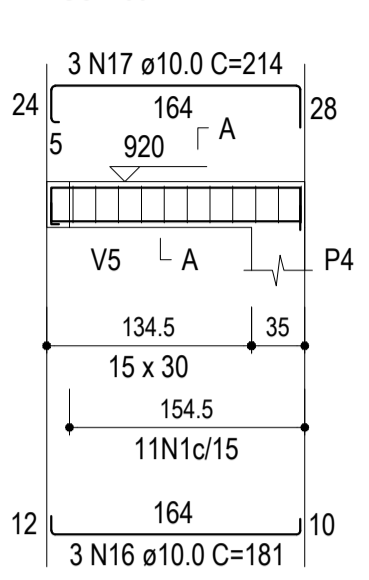
V2 (15 x 60)



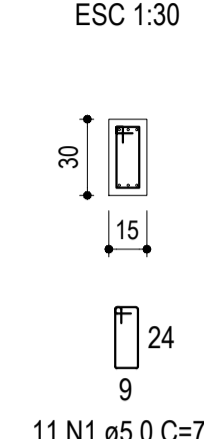
SEÇÃO A-A



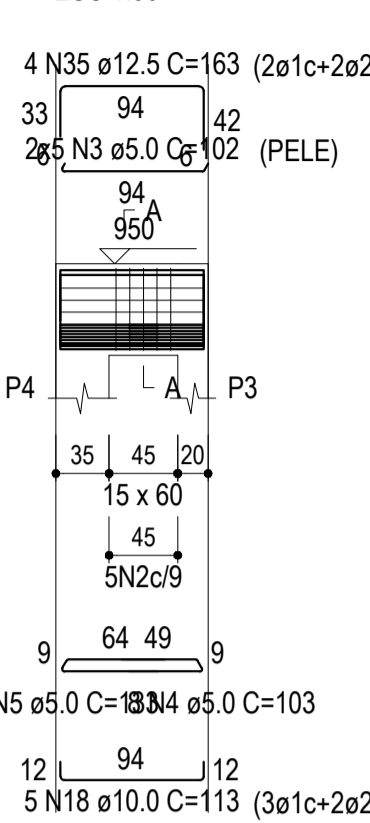
V3 (15 x 30)



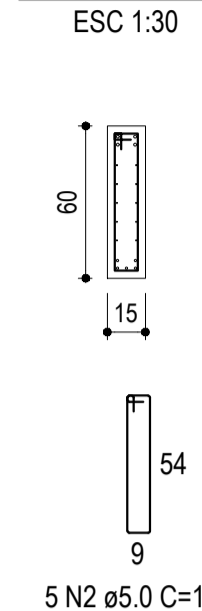
SEÇÃO A-A



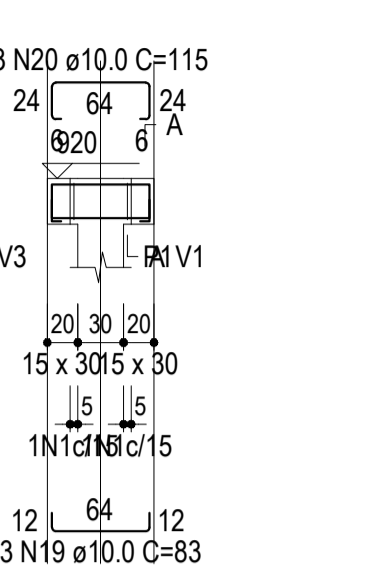
V4 (15 x 60)



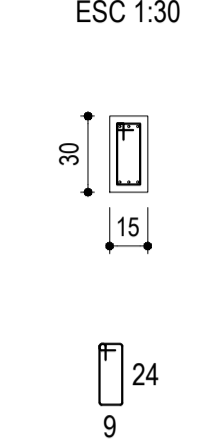
SEÇÃO A-A



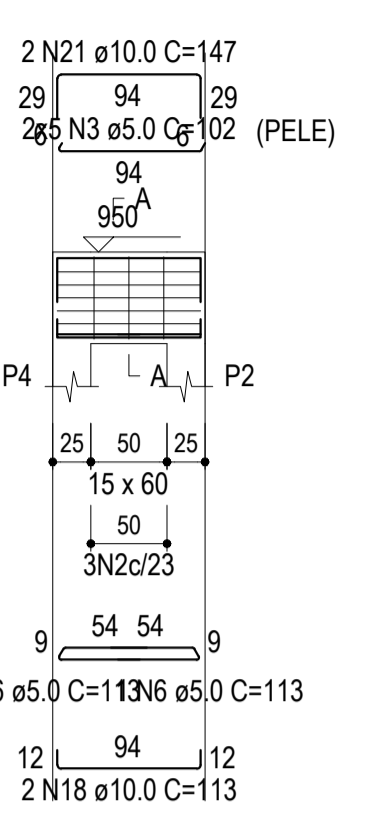
V5 (15 x 30)



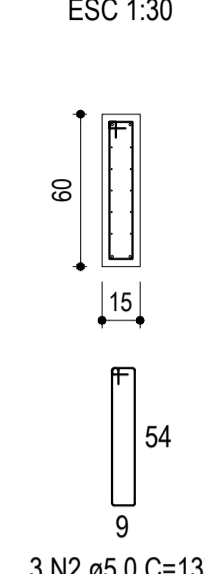
SEÇÃO A-A



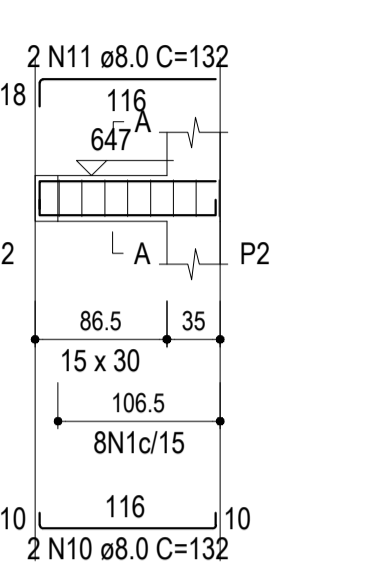
V6 (15 x 60)



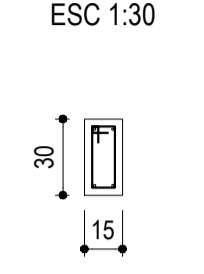
SEÇÃO A-A



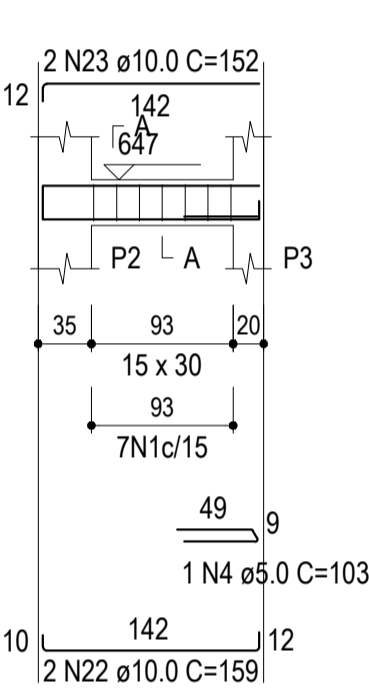
V7 (15 x 30)



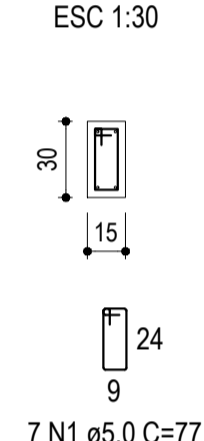
SEÇÃO A-A



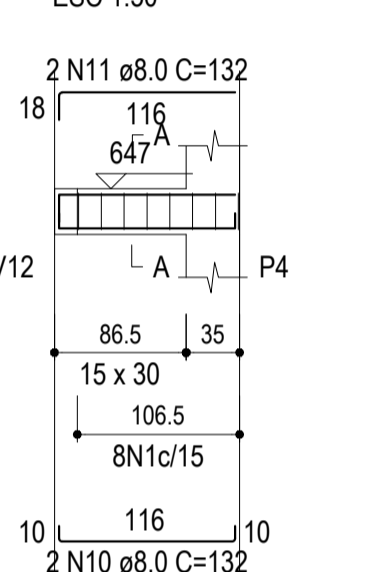
V8 (15 x 30)



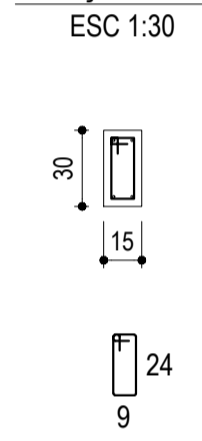
SEÇÃO A-A



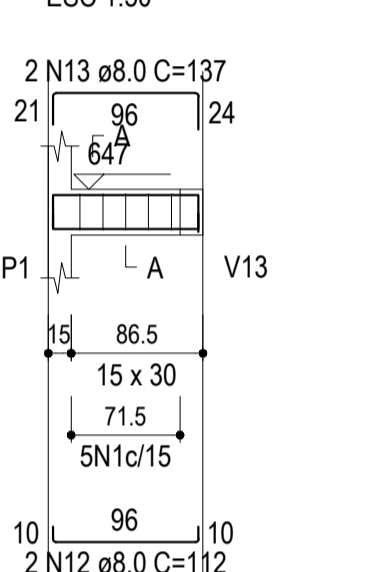
V9 (15 x 30)



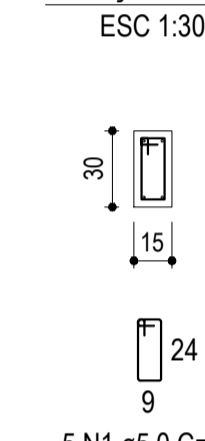
SEÇÃO A-A



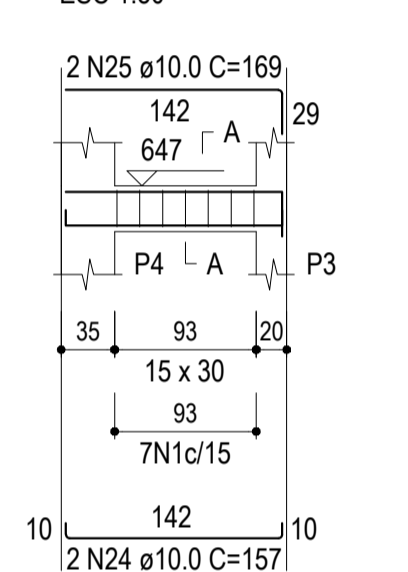
V10 (15 x 30)



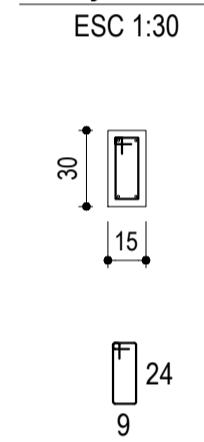
SEÇÃO A-A



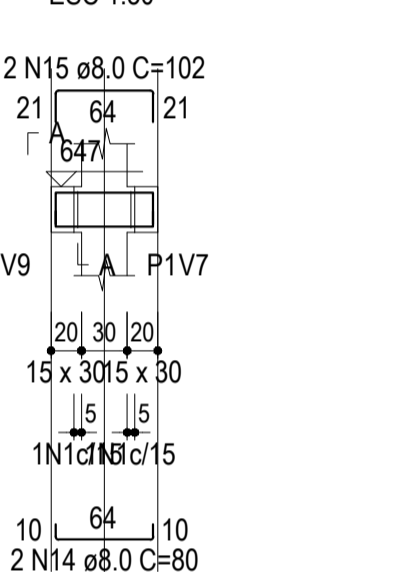
V11 (15 x 30)



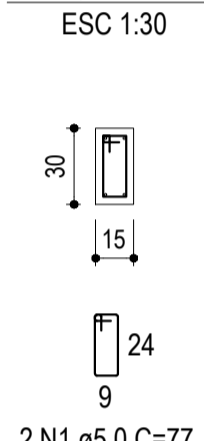
SEÇÃO A-A



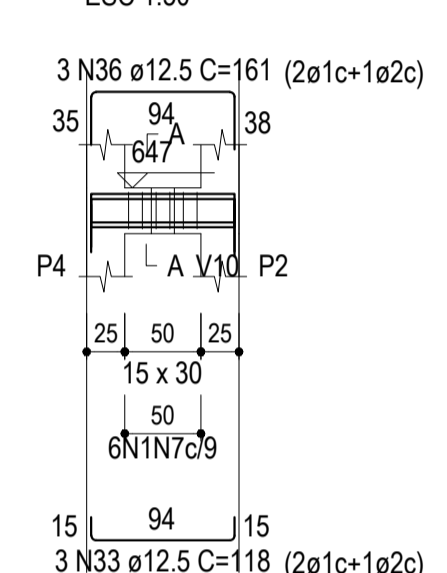
V12 (15 x 30)



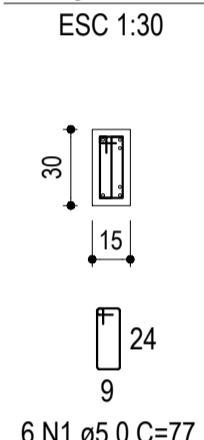
SEÇÃO A-A



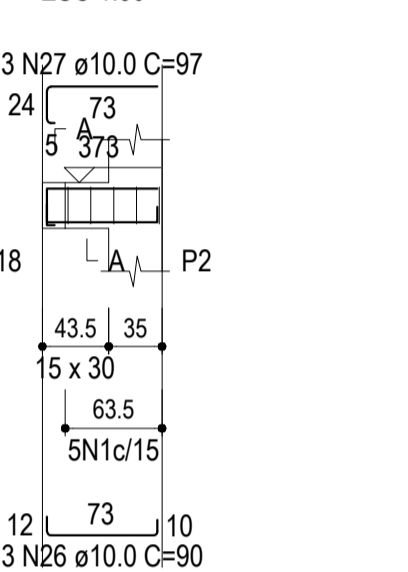
V13 (15 x 30)



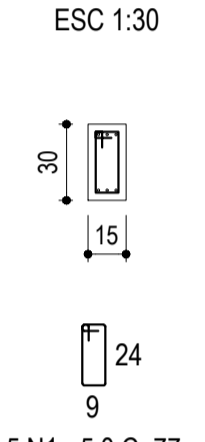
SEÇÃO A-A



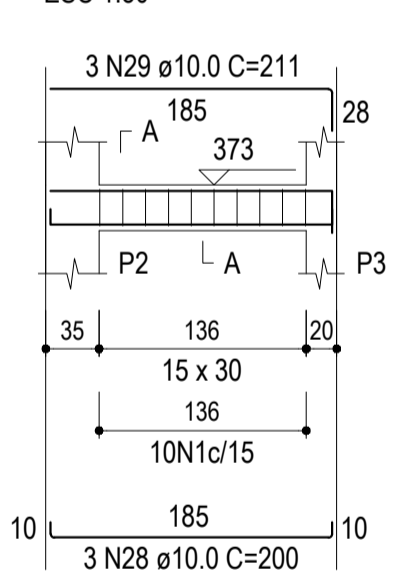
V14 (15 x 30)



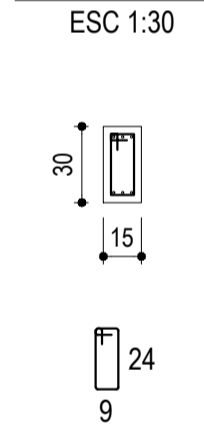
SEÇÃO A-A



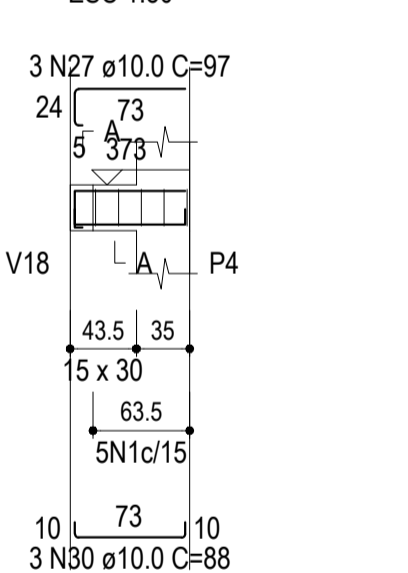
V15 (15 x 30)



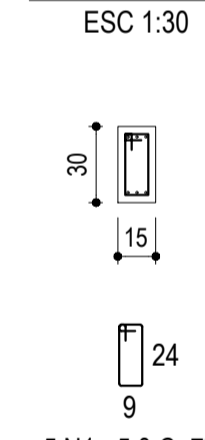
SEÇÃO A-A



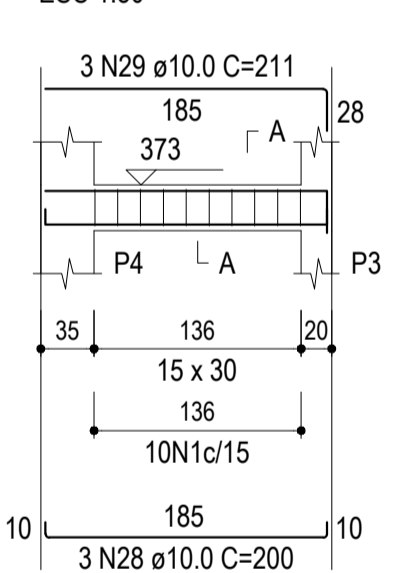
V16 (15 x 30)



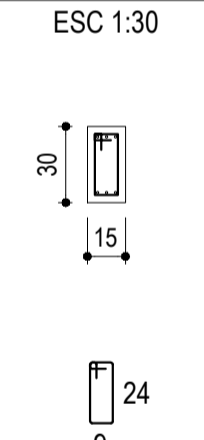
SEÇÃO A-A



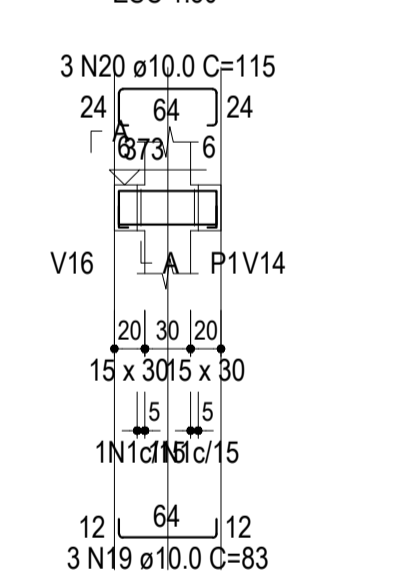
V17 (15 x 30)



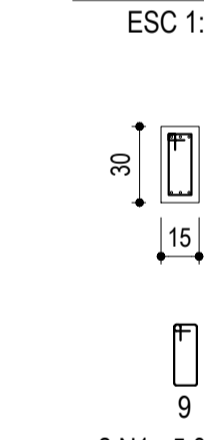
SEÇÃO A-A



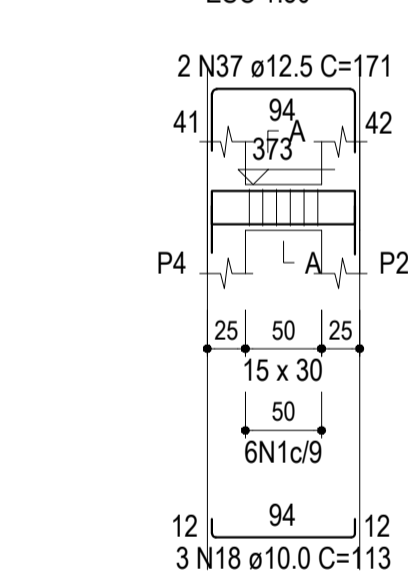
V18 (15 x 30)



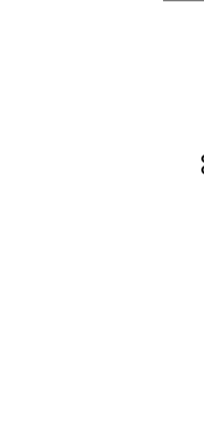
SEÇÃO A-A



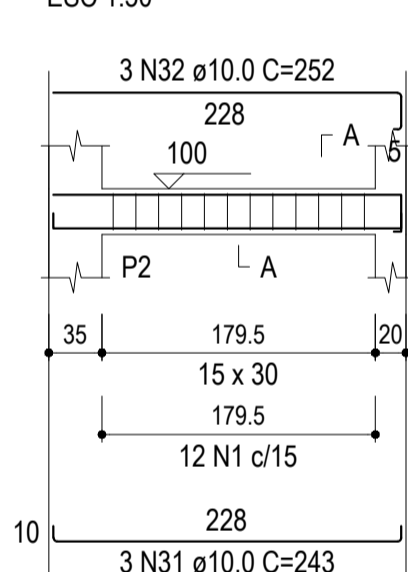
V19 (15 x 30)



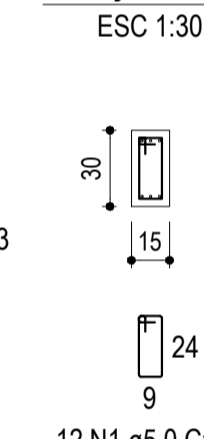
SEÇÃO A-A



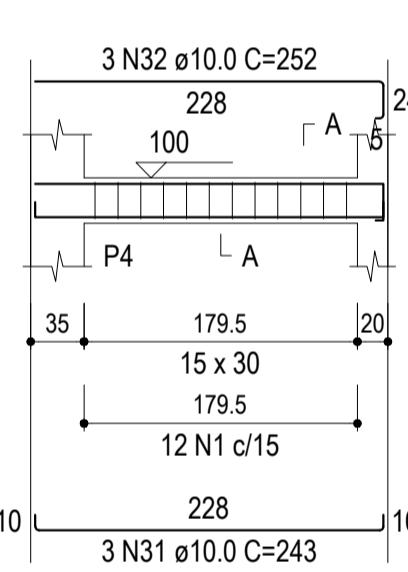
V20 (15 x 30)



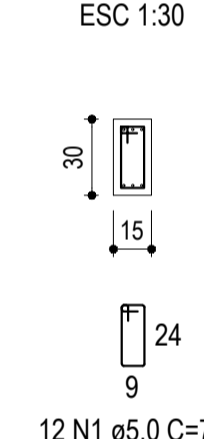
SEÇÃO A-A



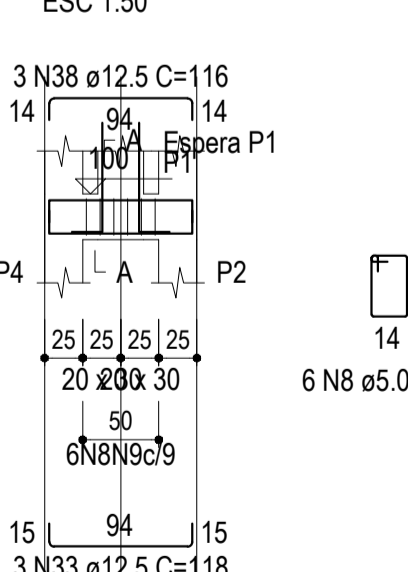
V21 (15 x 30)



SEÇÃO A-A



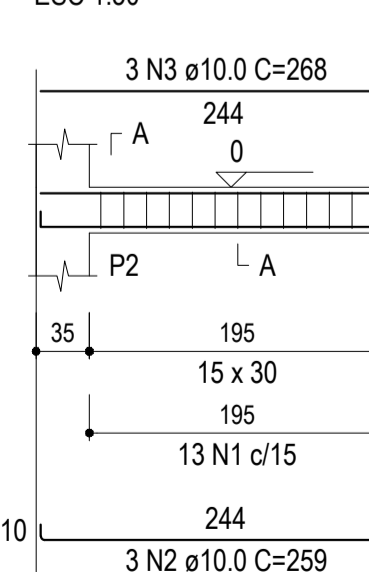
V22 (20 x 30)



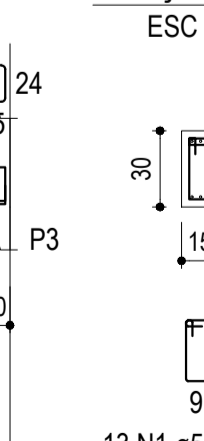
SEÇÃO A-A



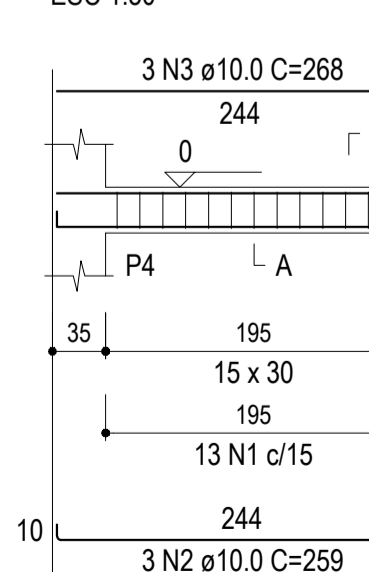
V1 (15 x 30)



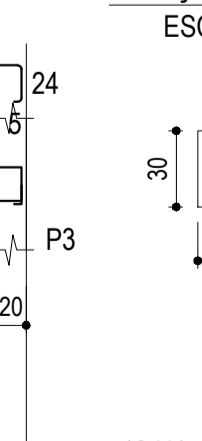
SEÇÃO A-A



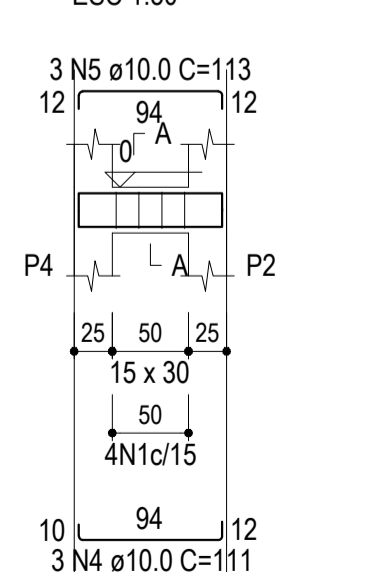
V2 (15 x 30)



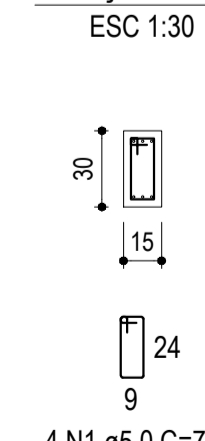
SEÇÃO A-A



V3 (15 x 30)



SEÇÃO A-A



RESUMO VIGAS DE CONCRETO

AOÇO	DIAM (mm)	C.TOTAL (m)	QUANT + 0% (Barras)	PESO + 0% (kg)
CA50	8.0	19.2	2	7.6
	10.0	168	15	104
	12.5	39.8	4	38.3
	5.0	209	18	34
PESO TOTAL (kg)				
CA50		124.8		
CA60		28.7		

Volume de concreto (C-30) = 1.68 m³
Área de forma = 27 m²



PROJETOS INTEGRADOS: ESTRUTURAIS | ELÉTRICO | HIDROSSANITÁRIO | ORÇAMENTO
TEL.: (55) 99159-8247 | (55) 99164-5529 | gamazengenhariabim@gmail.com
CNPJ: 36.092.412/0001-46

PROJETO: **PÓRTICO IBIRUBÁ RS**
ACESSO SECUNDÁRIO LINHA PULADOR SUL

ENDEREÇO: Trevo de acesso via EC Bangú - Ibirubá/RS | CEP 98210-000

CLIENTE: Prefeitura Municipal de Ibirubá

RESP. TÉCNICO: Eng. Civil André Schiefelbein
CREA-RS 093.879

CONTEÚDO: DETALHAMENTO VIGAS