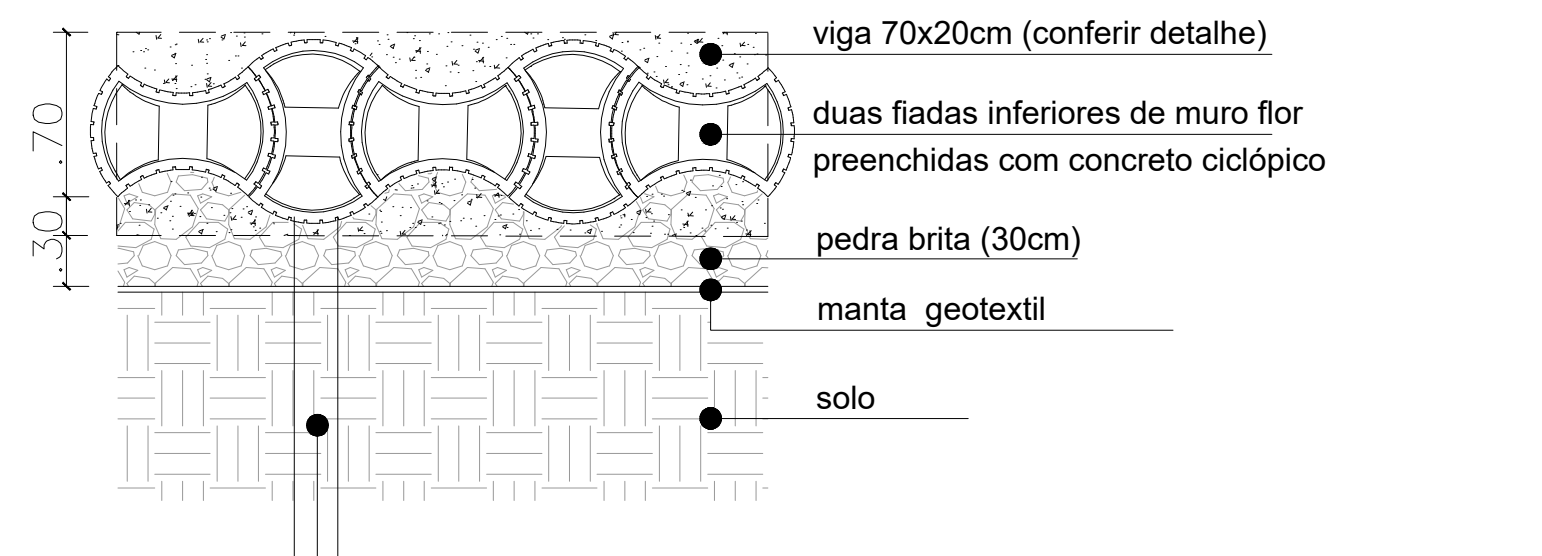
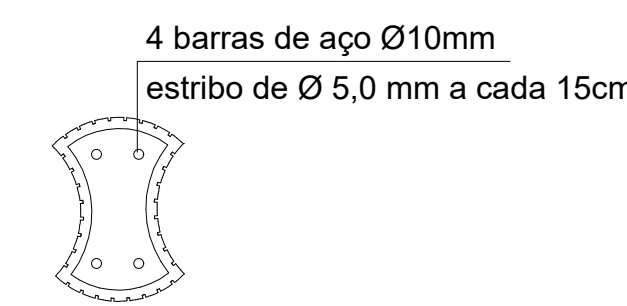


CORTE
Escala: 1/50

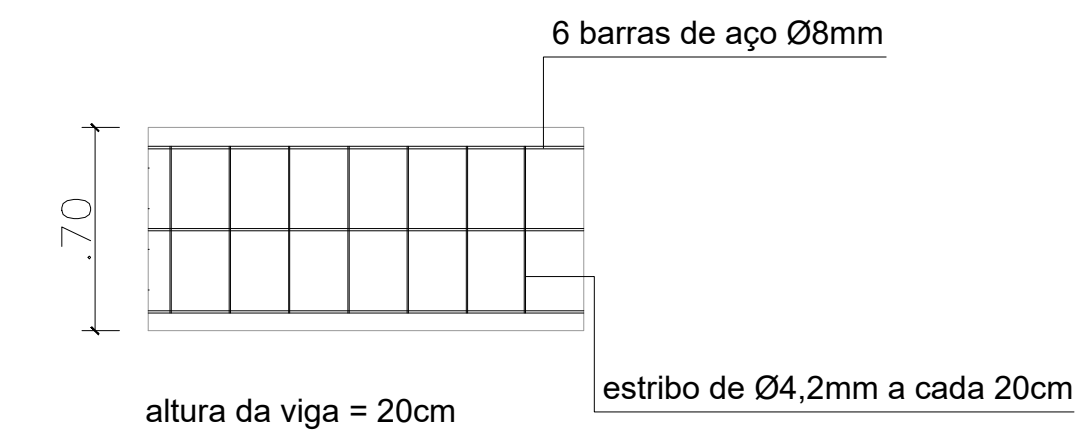


tirantes 400x15x25cm (4 barras de aço Ø10mm, estribos de Ø 5,0 mm a cada 15cm)
sapata armada dos tirantes = 100x100x30cm, concreto FCK=30MPA

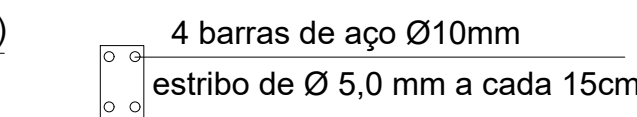
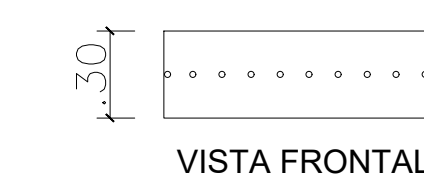
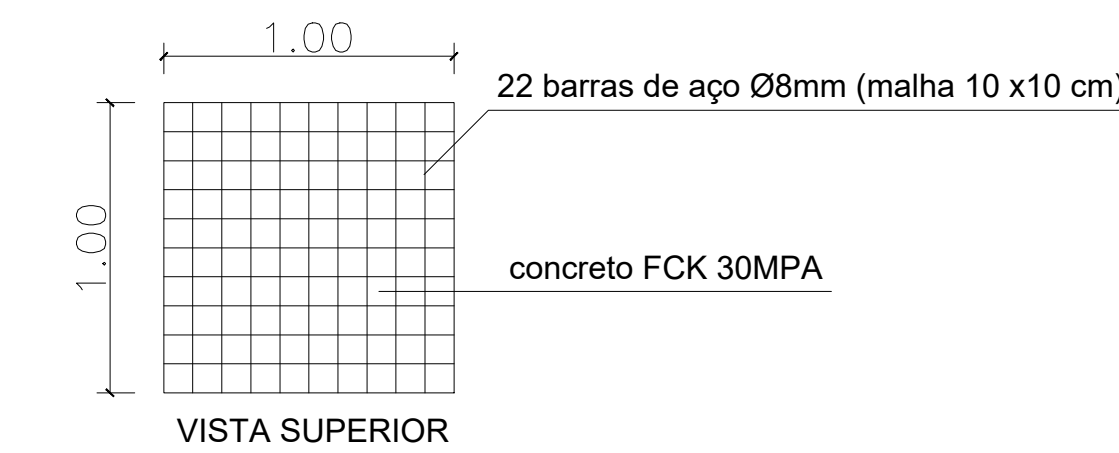
PLANTA BAIXA
Escala: 1/50



DETALHE PILAR
Escala: 1/50

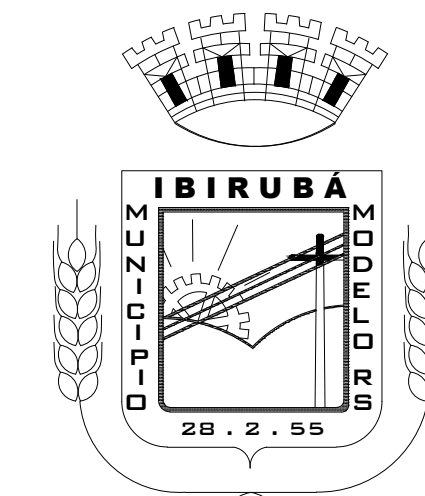


DETALHE VIGA
Escala: 1/50



DETALHE TIRANTE
Escala: 1/50

DETALHE SAPATA
Escala: 1/50



MUNICÍPIO DE IBIRUBÁ

MURO COM BLOCOS DE CONCRETO VAZADO AVENIDA JULIO ROSA

OBRA
USO: PÚBLICO
LOCALIZAÇÃO: Avenida Julio Rosa, Bairros Centro - Ibirubá/RS

PLANTAS EXISTENTE
* CORTES E DETALHES

PROPRIETÁRIO
MUNICÍPIO DE IBIRUBÁ

PROJETO
Roberta Suelen Ahlert Durigon
Arquiteta e Urbanista CAU A 46849-5

EXECUÇÃO

ÁREA

DESENHO
ABR 2022

PRANCHA
2/2