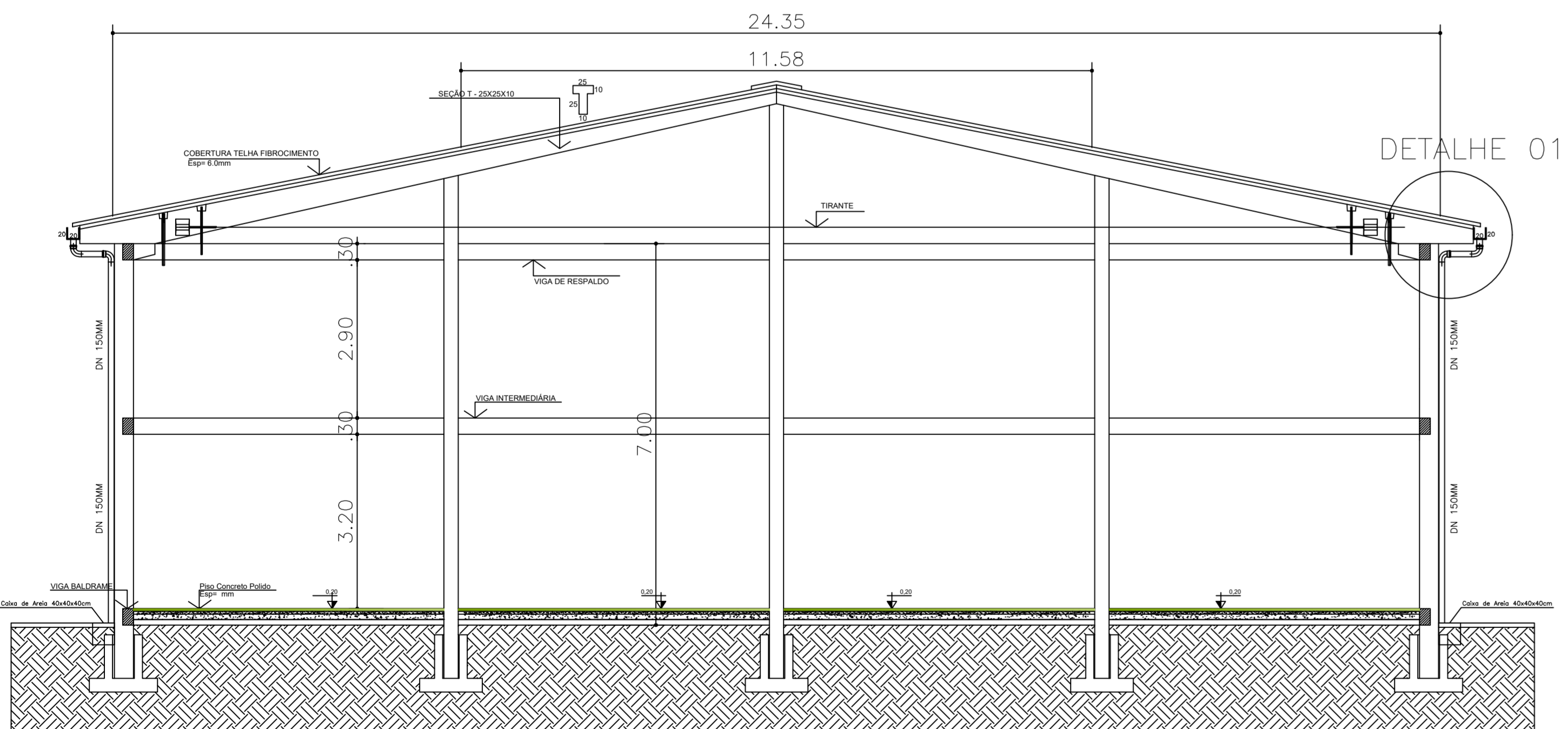
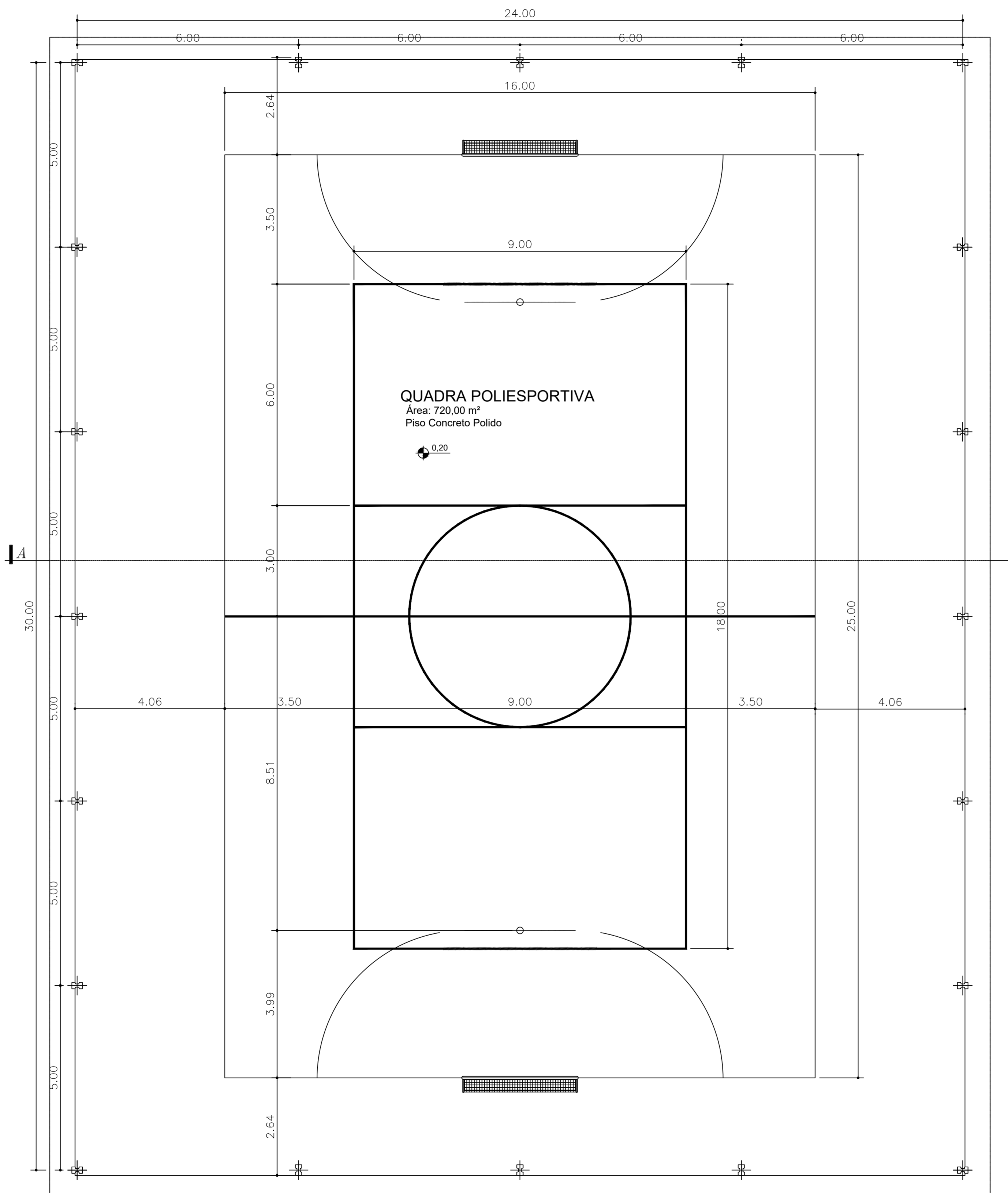


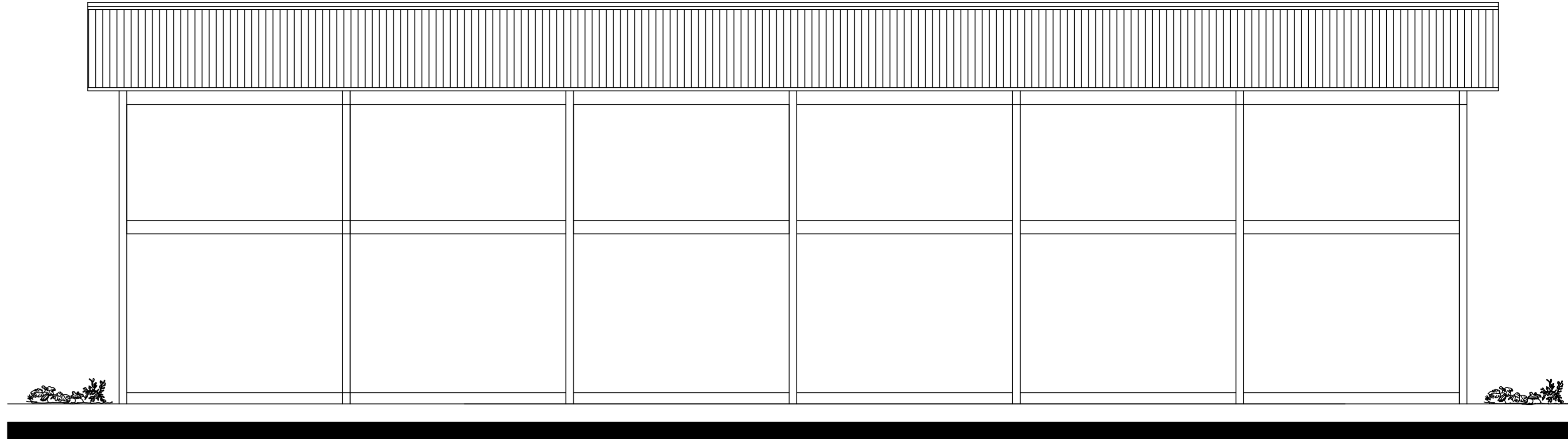
FACHADA PRINCIPAL  
ESCALA: 1:75



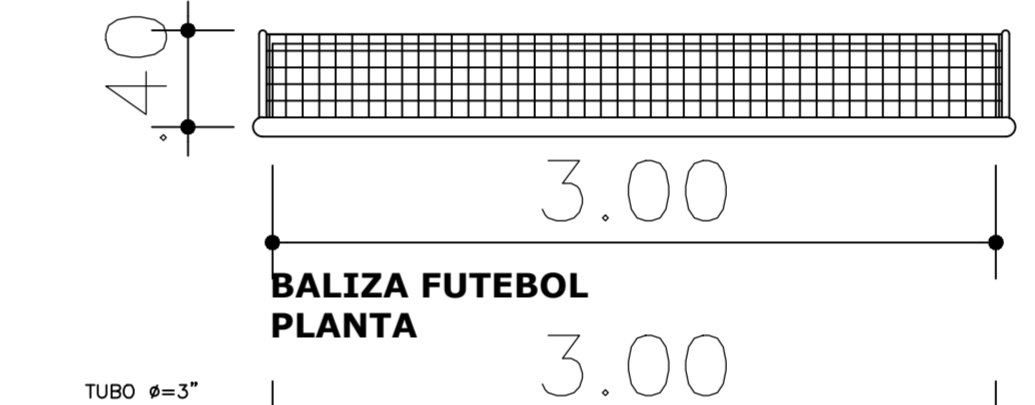
CORTE AA  
ESCALA: 1:75



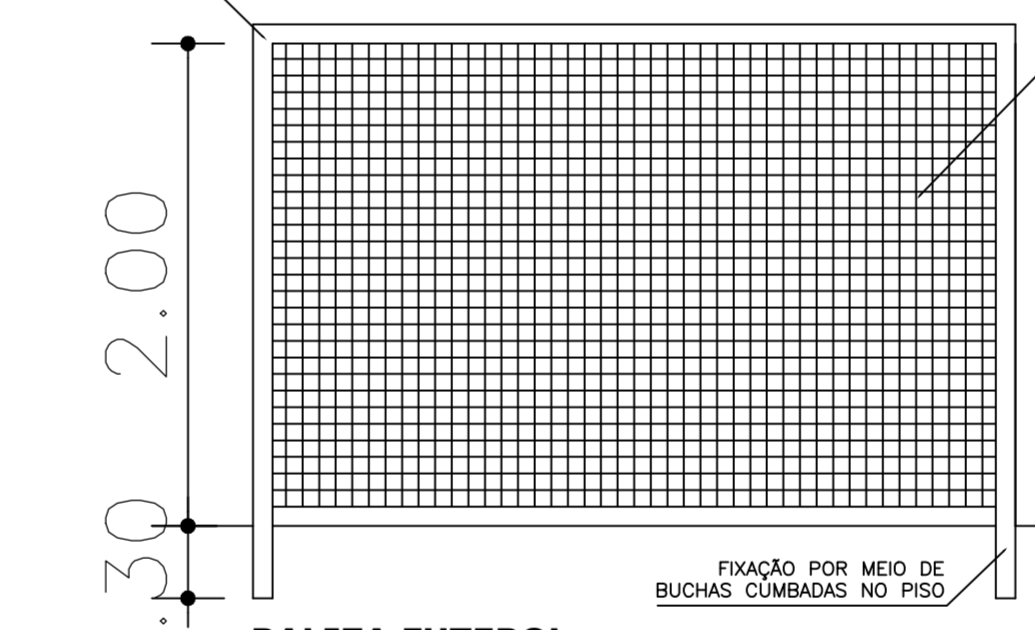
PLANTA BAIXA  
ESCALA: 1:75



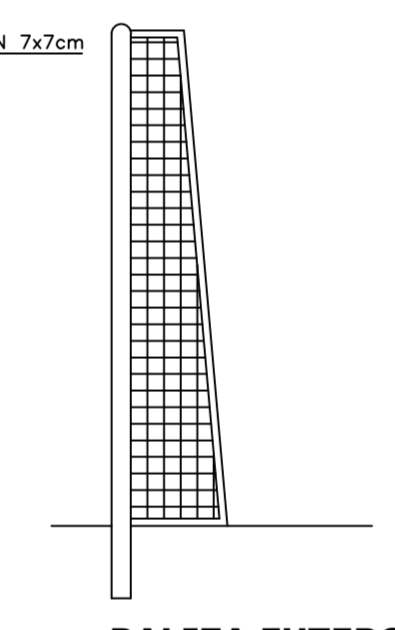
FACHADA LATERAL  
ESCALA: 1:75



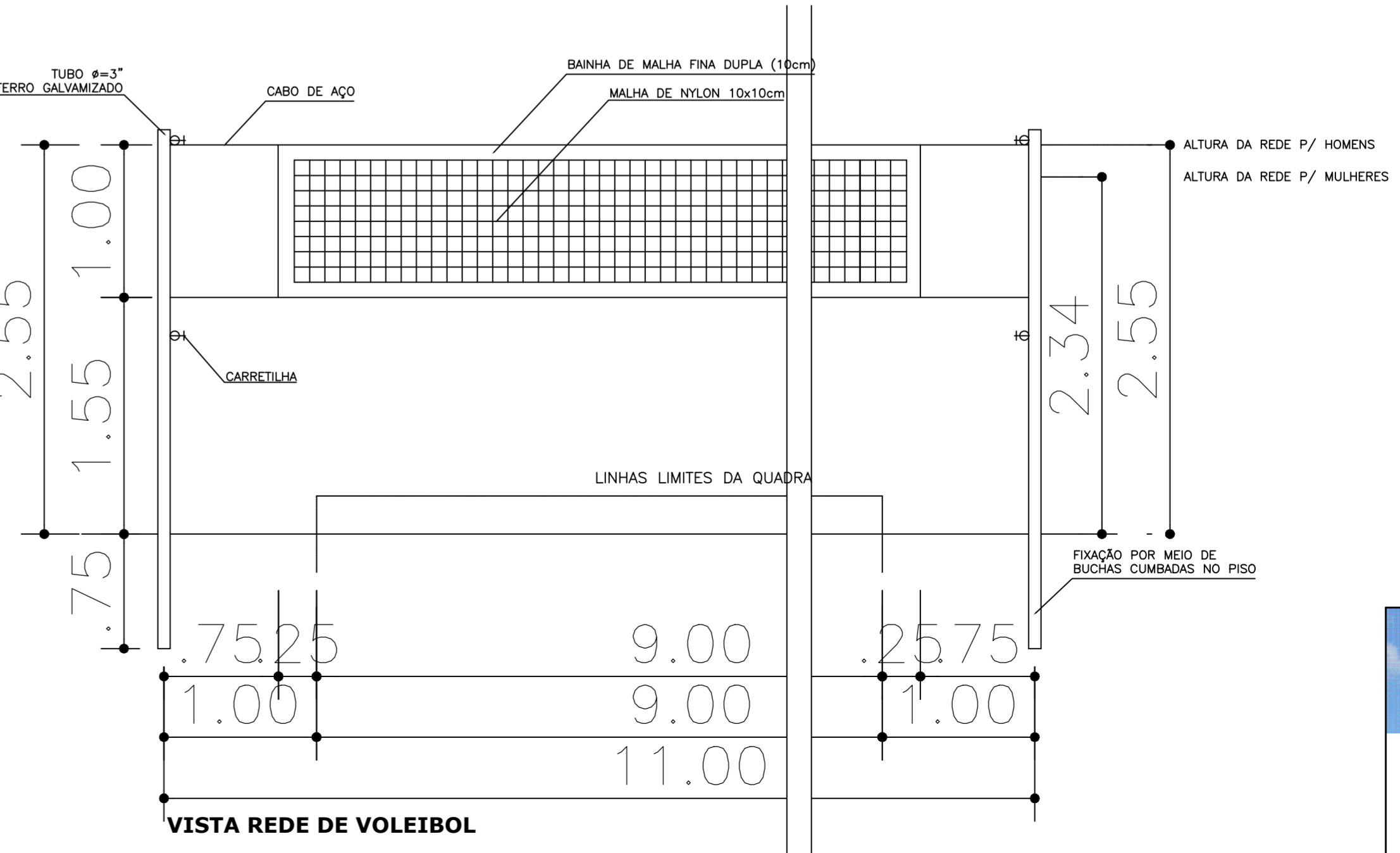
BALIZA FUTEBOL  
PLANTA



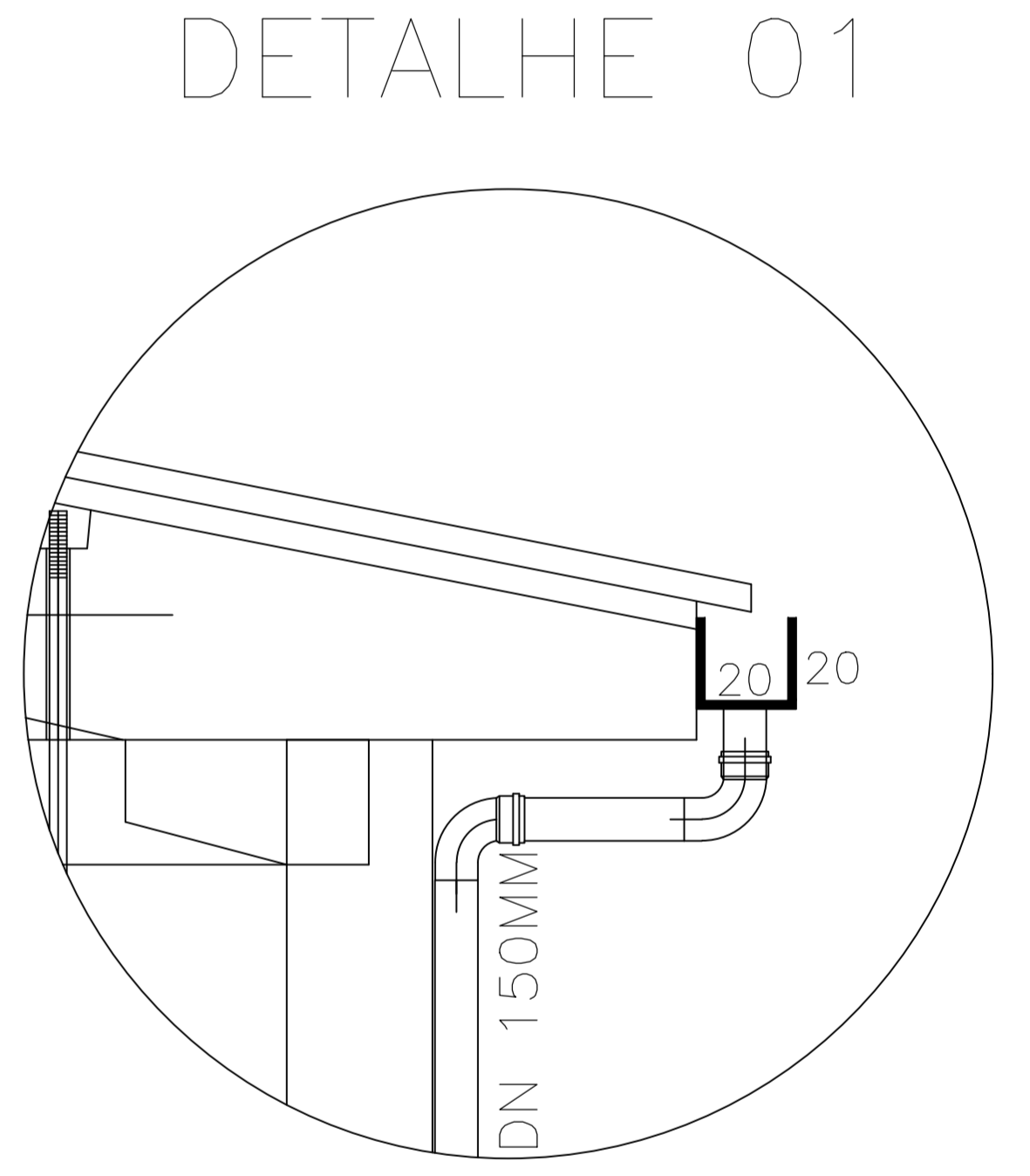
BALIZA FUTEBOL  
VISTA FRONTAL



BALIZA FUTEBOL  
VISTA LATERAL



VISTA REDE DE VOLEIBOL



DETALHE 01

RUA VALZUMIRO DUTRA, 161 - CENTRO - CEP 98.460-000  
FONE (55) 3745-1288 - IRAÍ/RS

<b>MUNICÍPIO DE IRAÍ</b>			
<b>PROJETO ARQUITETÔNICO</b>			
RUA EUHED NUNES DA SILVA	FRANCHA: 02	DATA:	08/11/2016
PLANTA BAIXA, FACHADA PRINCIPAL/LATERAL, CORTE AA E DETALHES	ESCALA:	1:75	MET. TOTAL 720,00M²
CRISTIAN NEGRELLO Engenheiro Civil - CREA 161/0007		ANTÔNIO WILSON BERNARDI Engenheiro Civil - CREA 161/0007	
<small>Diante Autoria Reservada Conforme Artigo 184 Do Código Penal, Lei 5.088 Do Código Civil e Resolução CONFEA 205/71</small>			