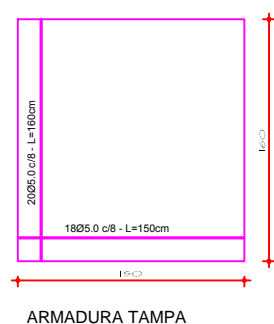
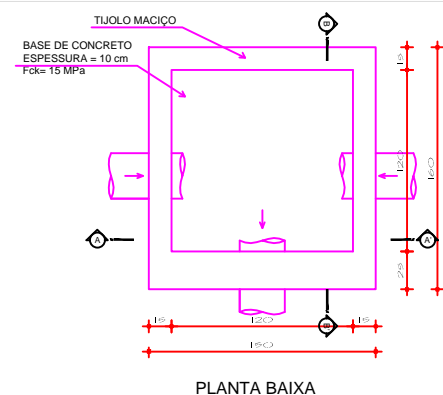
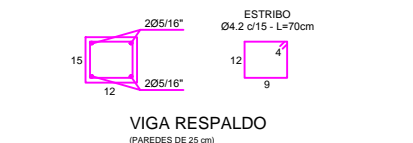
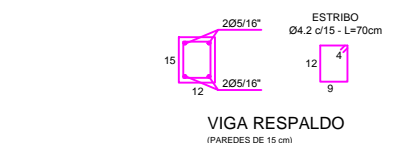
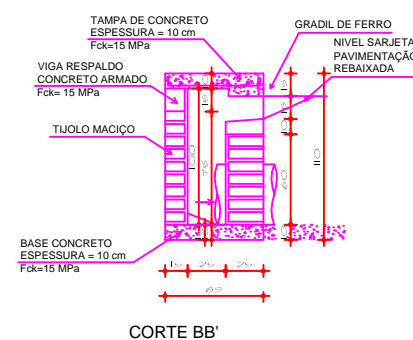
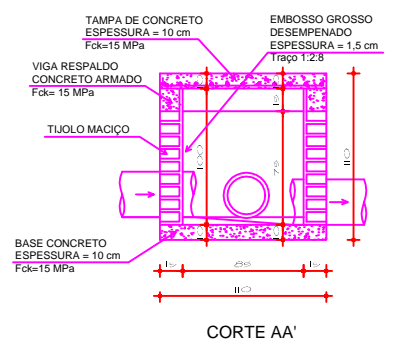
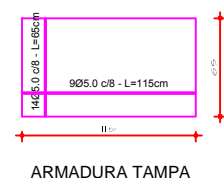
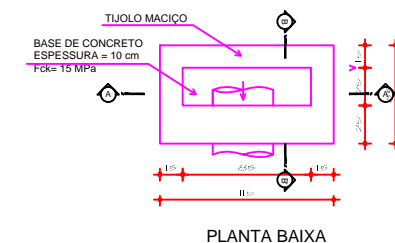
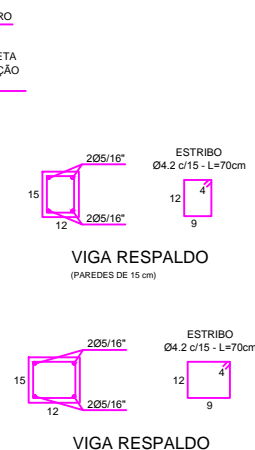
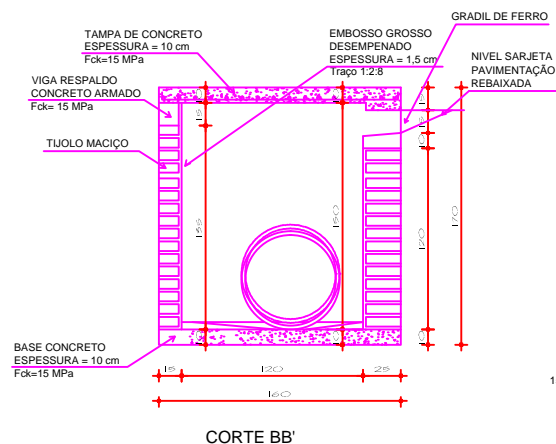
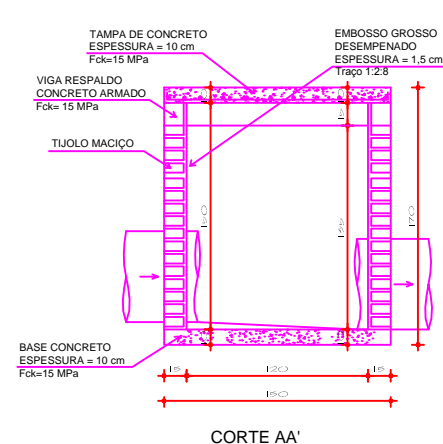
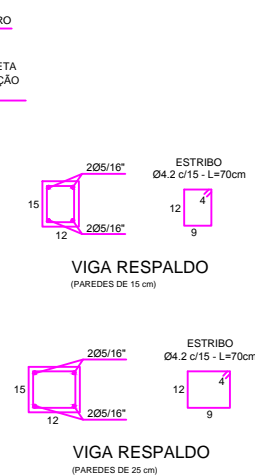
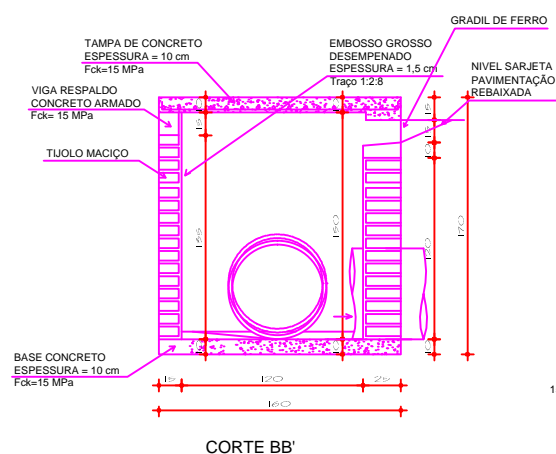
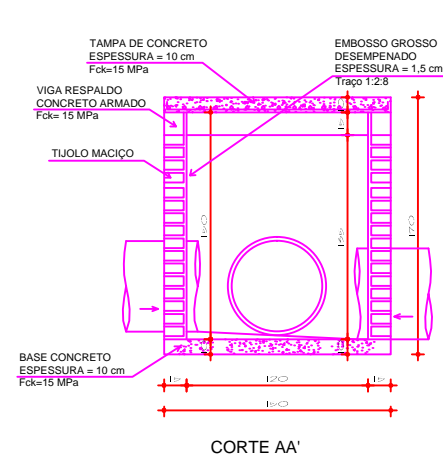


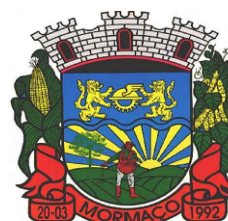
CAIXA DE PASSAGEM DETALHAMENTO - 1



CAIXA DE PASSAGEM DETALHAMENTO - 2



CAIXA DE PASSAGEM DETALHAMENTO - 3



PREFEITURA MUNICIPAL DE MORMAÇO

OBRA:	MOBILIDADE URBANA PAVIMENTAÇÃO	DATA:	16/07/2021	ÁREA:		ESCALA:	1/50
PROPRIETÁRIO:	Prefeitura Municipal de Mormaço/RS - RODRIGO JACOBY TRINDADE	RESPONSÁVEL TÉCNICO:	ENG. CIVIL CLÉDIO BERTANI- CREA-RS: 174.065				
CONTEÚDO:	DETALHAMENTO CAIXA DE PASSAGEM BOCA DE LOBO	ENDEREÇO:	BAIRRO CENTRO - MORMAÇO-RS				D02