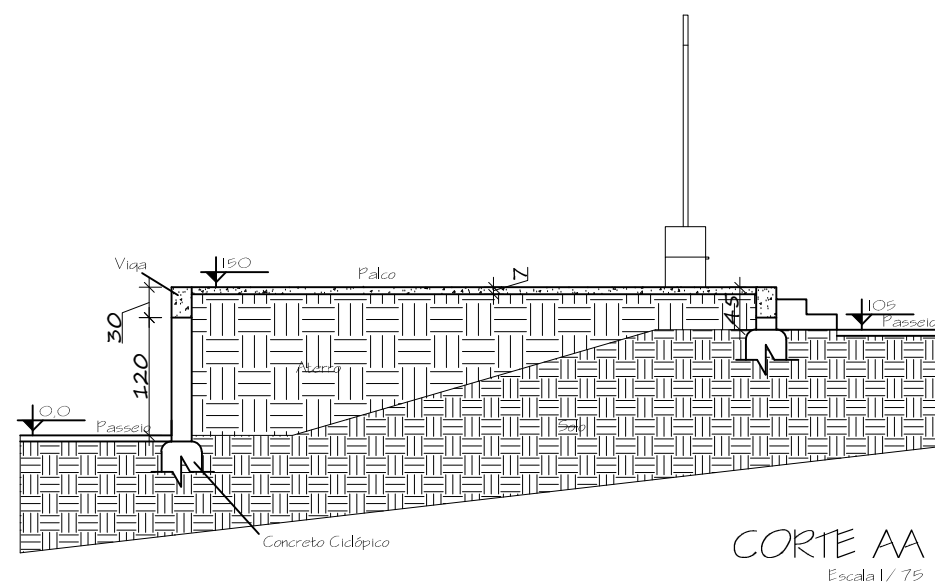
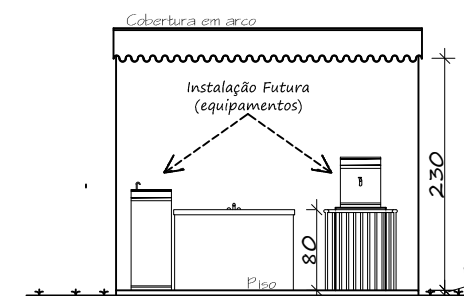
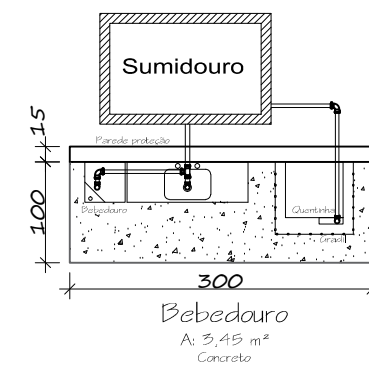


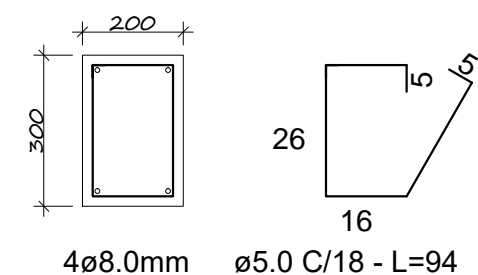
PLANTA BAIXA
Escala 1/75



CORTE AA
Escala 1/75



VIGA CINTAMENTO



PREFEITURA MUNICIPAL DE MORMAÇO

PROPRIETÁRIO:

Prefeitura Municipal de Mormaço/RS - LUÍS CARLOS MACHADO

RESPONSÁVEL TÉCNICO:

ENG. CIVIL Clélio Bertani - CREA-RS: 174.065

CO-RESPONSÁVEL TÉCNICO:

ENG. CIVIL Felipe Fontana Cherini - CREA-RS: 183.961

DATA:

DEZ/2016

ESCALA:

1/75 e Ind.

ÁREA TOTAL:

57,00 M²

PRANCHA:

D.04