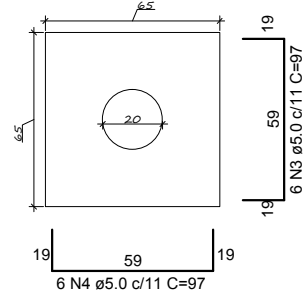
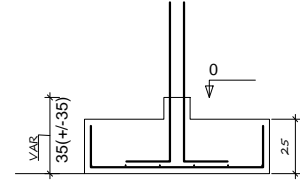


SAPATAS

Planta
S/ esc.

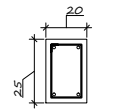


Corte
S/ esc.

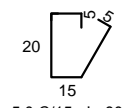


Solo compactado sobre a sapata
peso específico > 1600.00 kg/m³

VIGA BALDRAME

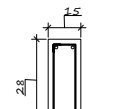


2ø8mm superior
2ø8mm inferior

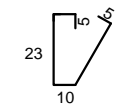


ø5.0 C/15 - L=80

VIGA COBERTURA



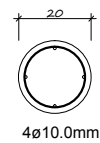
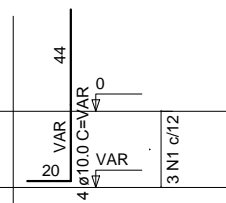
2ø8.0mm superior
2ø10.0mm inferior



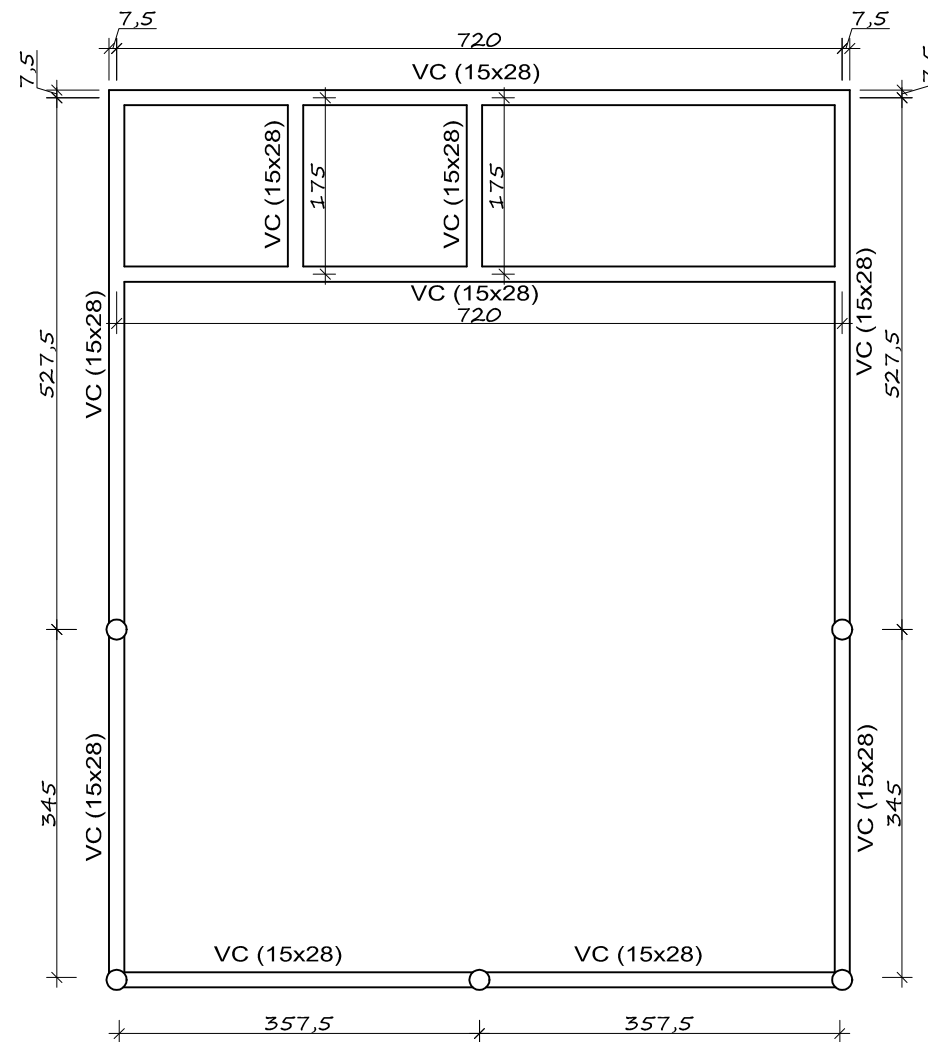
ø5.0 C/15 - L=70

PILARES

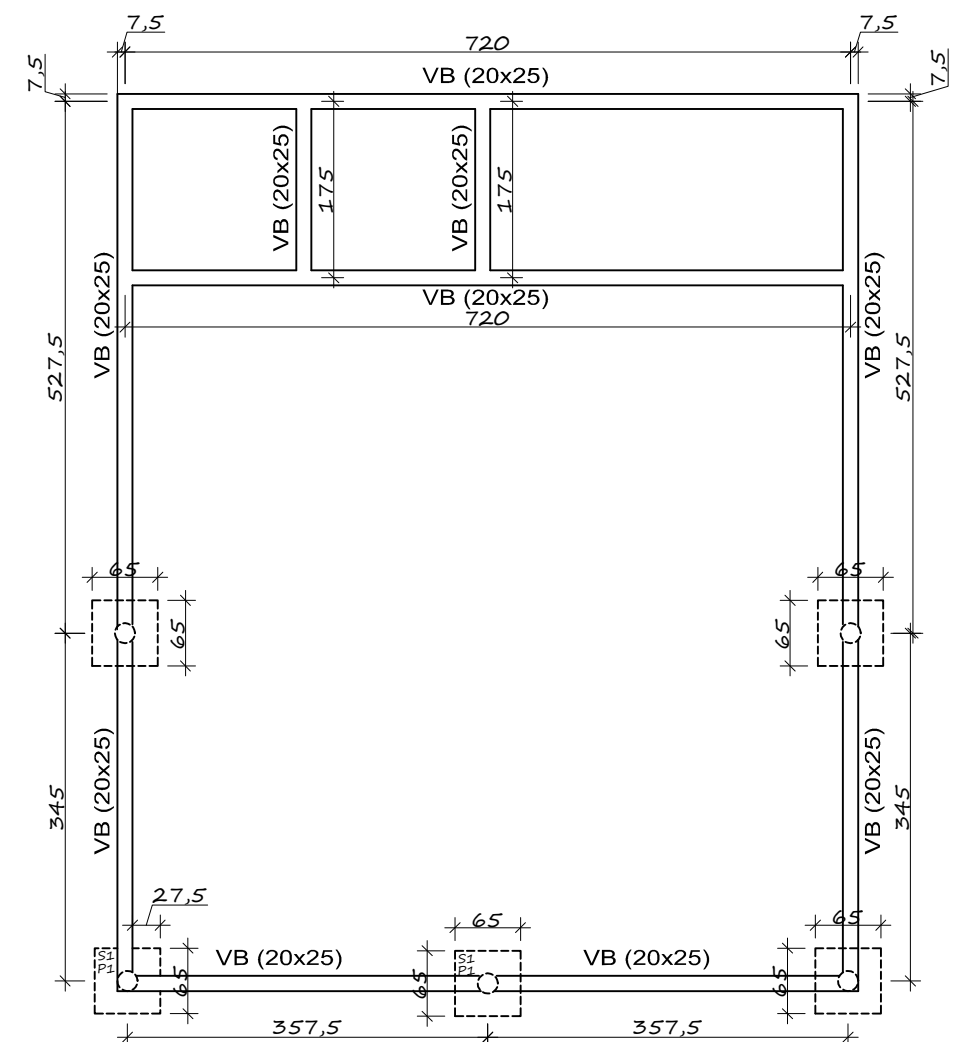
Fundação - L1
S/ esc.



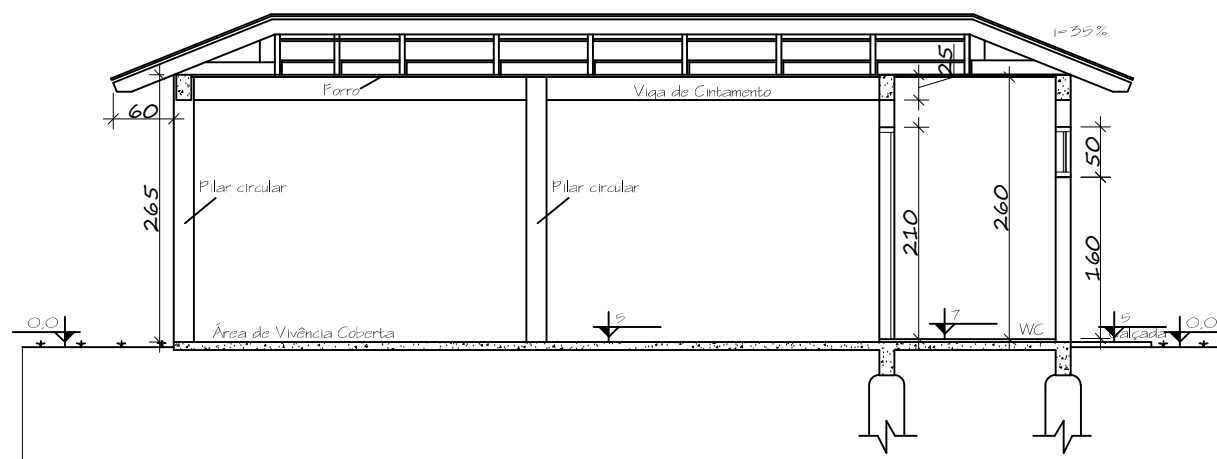
N1 ø5.0 C=70



VIGAS COBERTURA
Escala 1/50



VIGAS BALDRAME / SAPATAS
Escala 1/50



CORTE AA
Escala 1/50

PREFEITURA MUNICIPAL DE MORMAÇO

OBRAS:

ACADEMIA DA SAÚDE-MODALIDADE INTERMEDIÁRIA

DATA:

JUN/2019

ESCALA:

1/75

ÁREA:

215,47 M²

CONTEÚDO:

Estrutural e Corte

PROPRIETÁRIO:

Prefeitura Municipal - RODRIGO JACOBY TRINDADE

ENDEREÇO:

PRAÇA MUNICIPAL RUI NICOLDI
RUA LUIZ MORIGI
QUADRA 11 - BAIRRO CENTRO
MORMAÇO - RS

RESPONSÁVEL TÉCNICO:

ENG. CIVIL Clélio Bertani - CREA-RS: 174.065

PRANCHA:

A.02