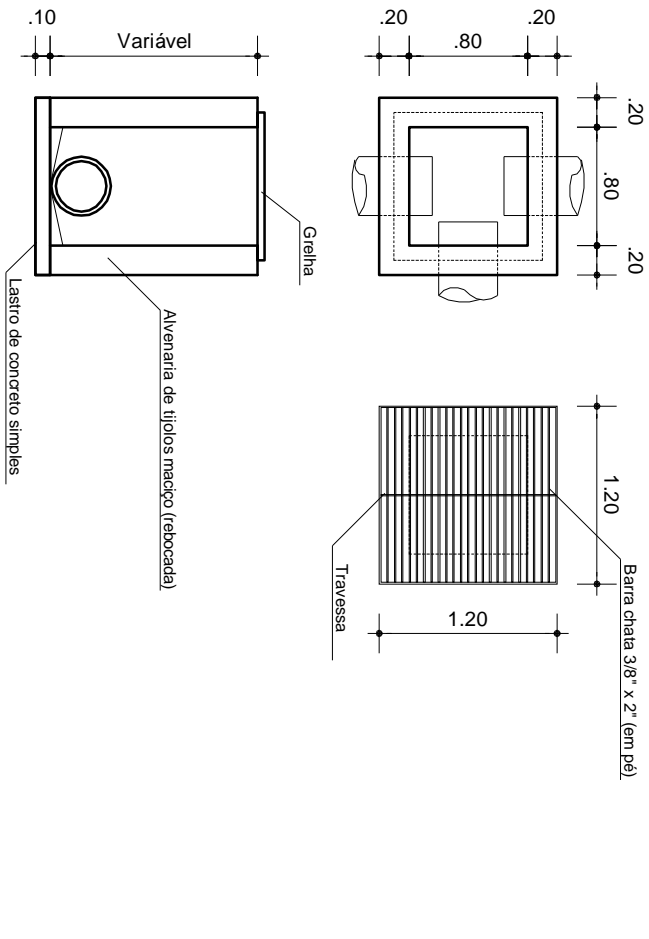
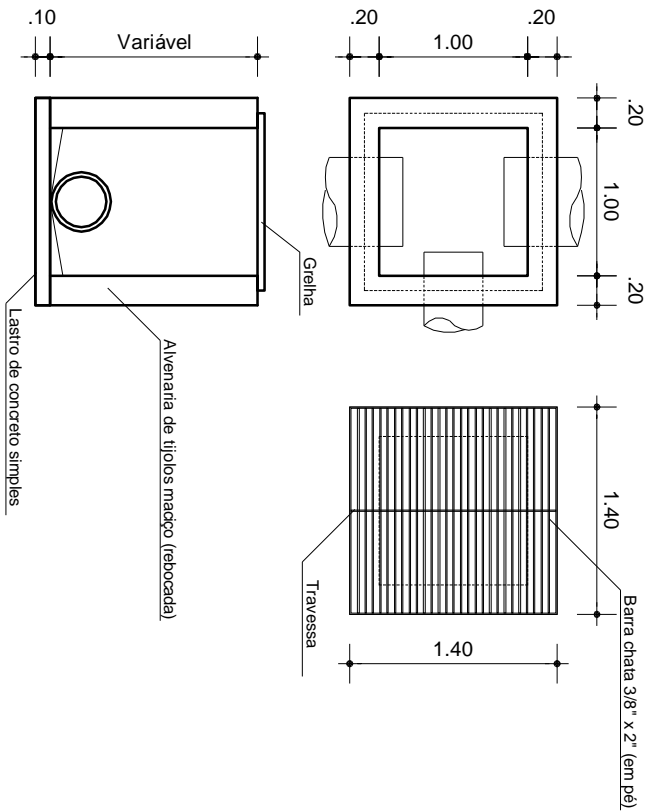


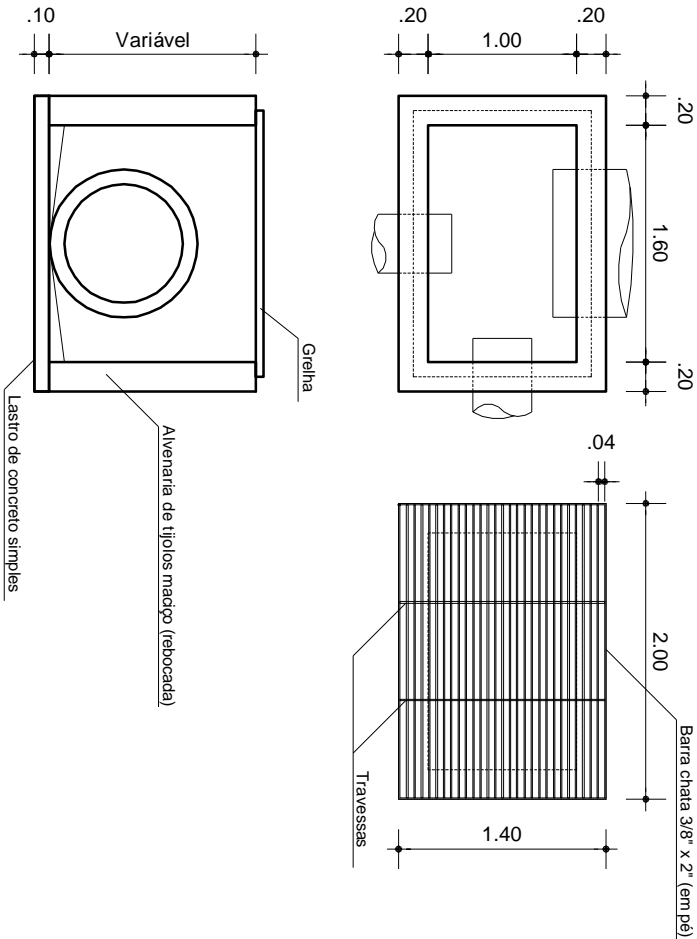
BOCA DE LOBO 1,20 M X 1,20 M



BOCA DE LOBO 1,40 M X 1,40 M

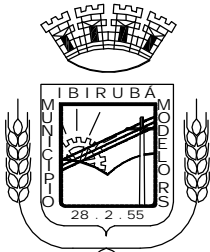


BOCA DE LOBO 2,00 M X 1,40 M



# MUNICÍPIO DE IBIRUBÁ

## DRENAGEM LOTE 02 - BOCAS DE LOBO



OBRA

LOCALIZAÇÃO: Ruas diversas - Ibirubá, RS

PLANTA

PROPRIETÁRIO

MUNICÍPIO DE IBIRUBÁ

PROJETO

JEFERSON MÜLLER  
CREA RS 107.299-D

EXECUÇÃO

ÁREA

DESENHO

MAIO 2020

PRANCHA

2/2