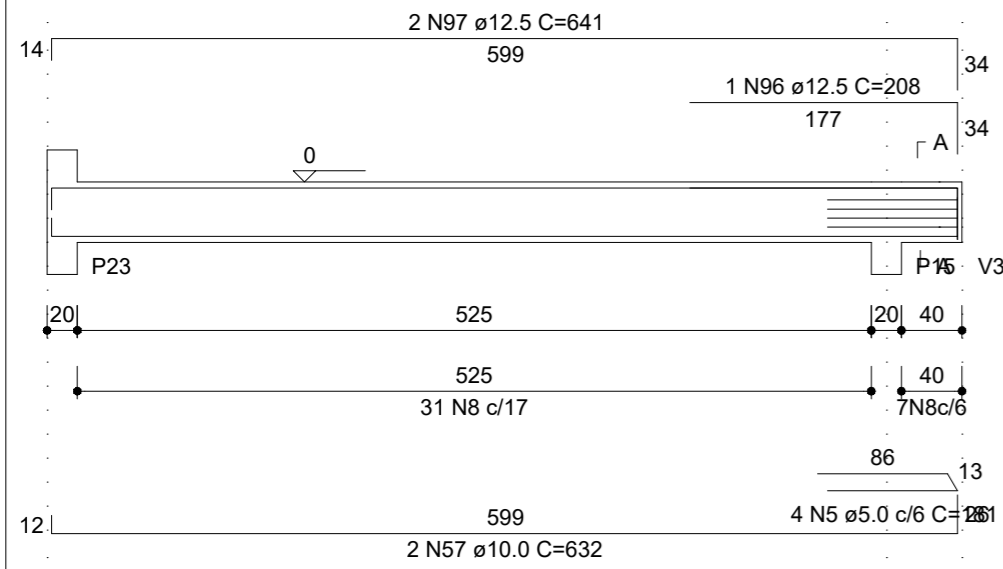
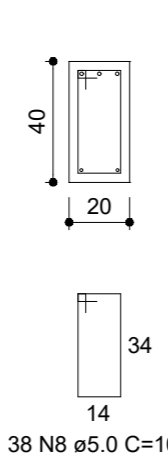


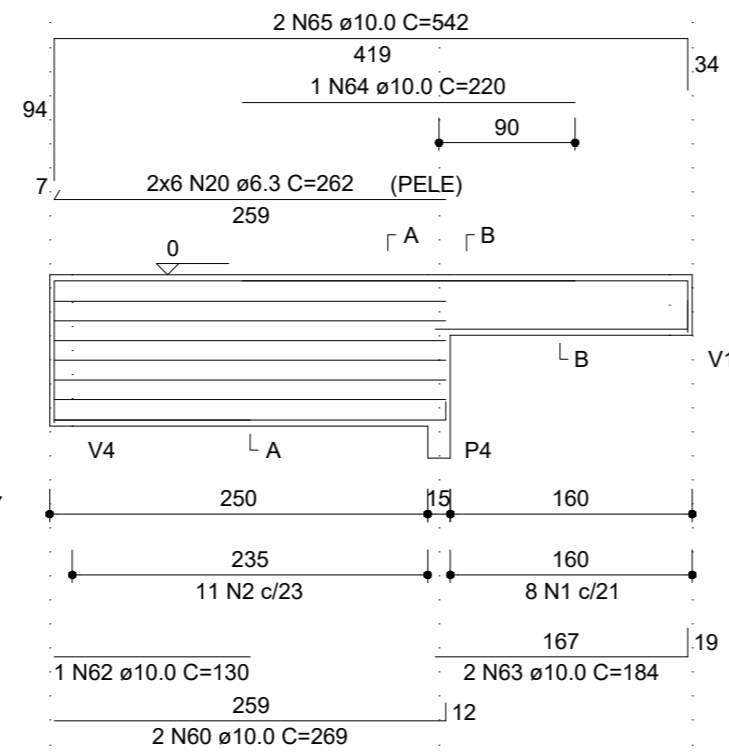
V16
ESC 1:50



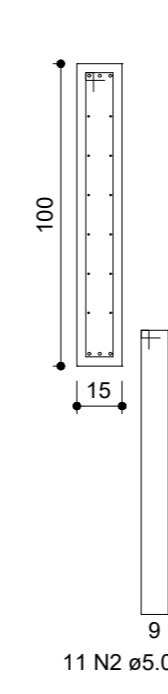
SEÇÃO A-A
ESC 1:25



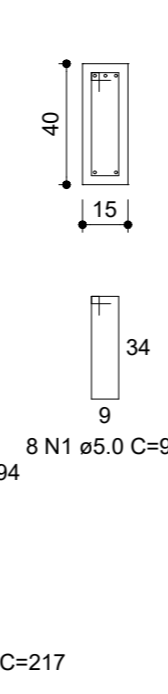
V17
ESC 1:50



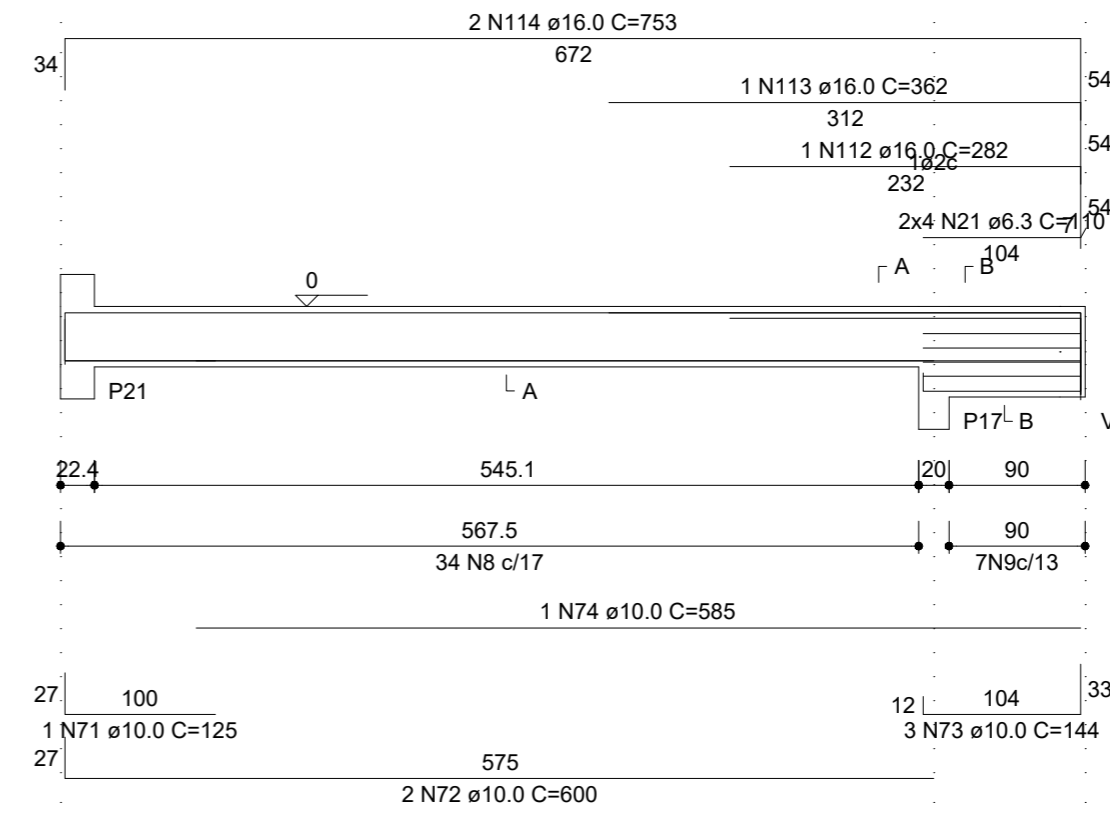
SEÇÃO A-A
ESC 1:25



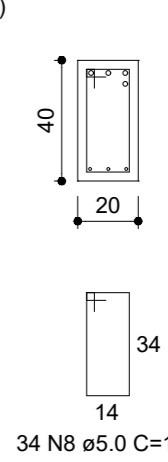
SEÇÃO B-B
ESC 1:25



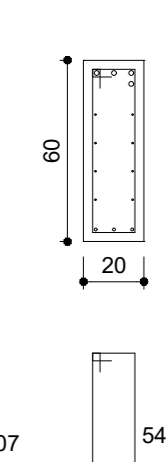
V20
ESC 1:50



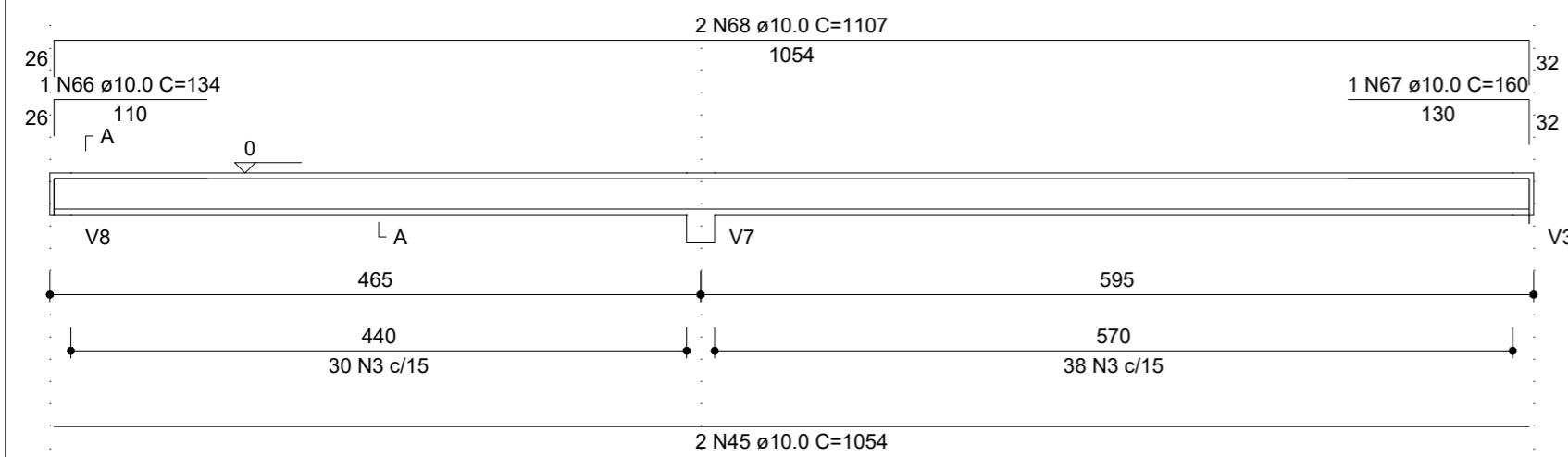
SEÇÃO A-A
ESC 1:25



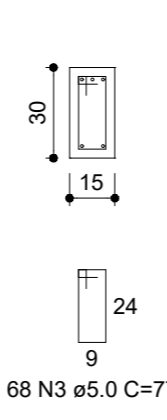
SEÇÃO B-B
ESC 1:25



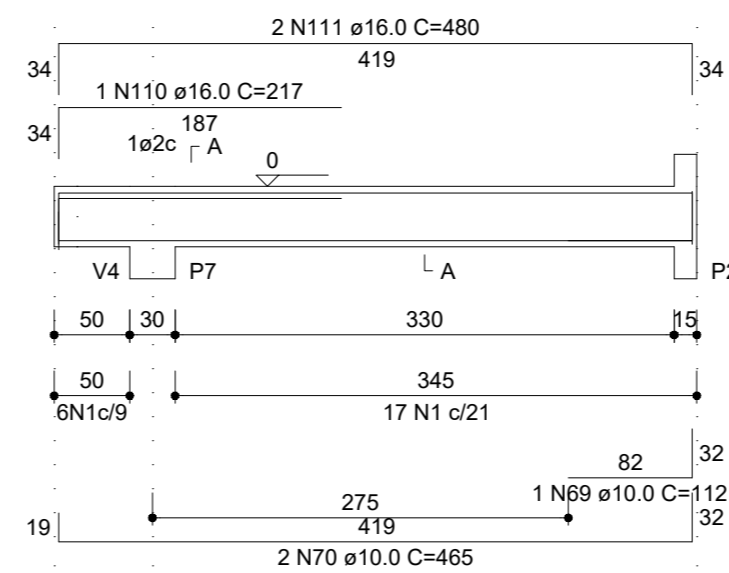
V18
ESC 1:50



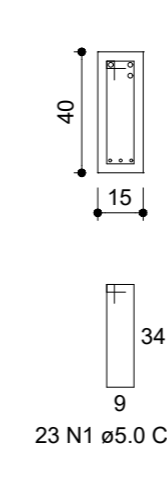
SEÇÃO A-A
ESC 1:25



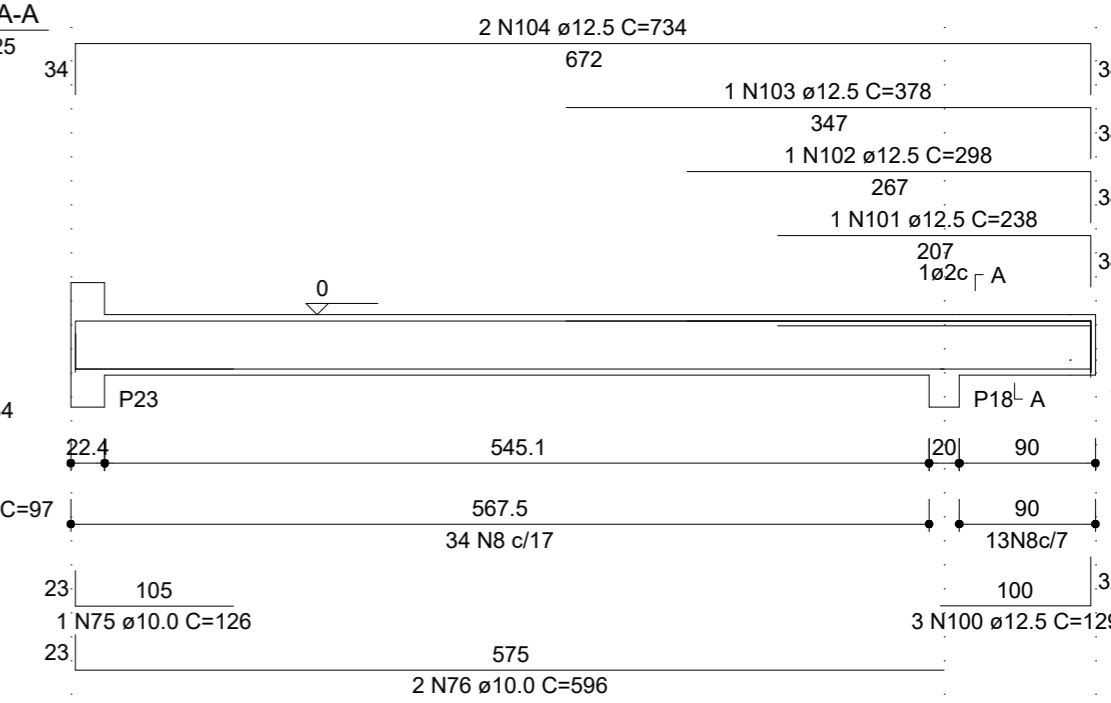
V19
ESC 1:50



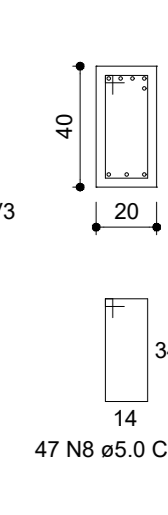
SEÇÃO A-A
ESC 1:25



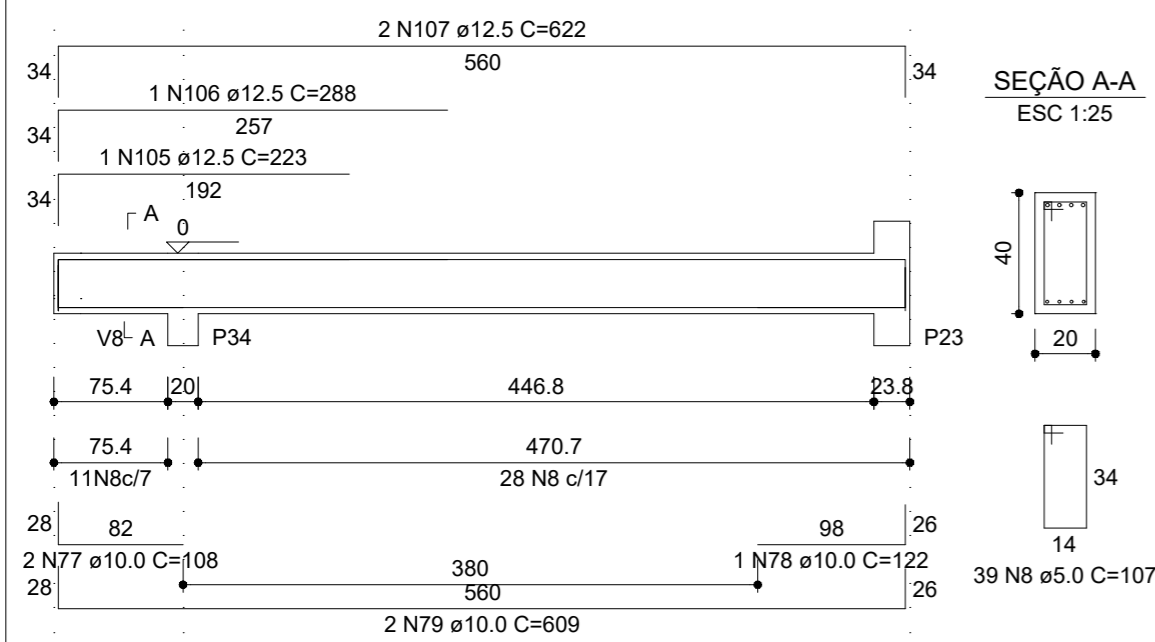
V21
ESC 1:50



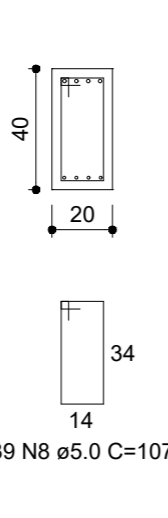
SEÇÃO A-A
ESC 1:25



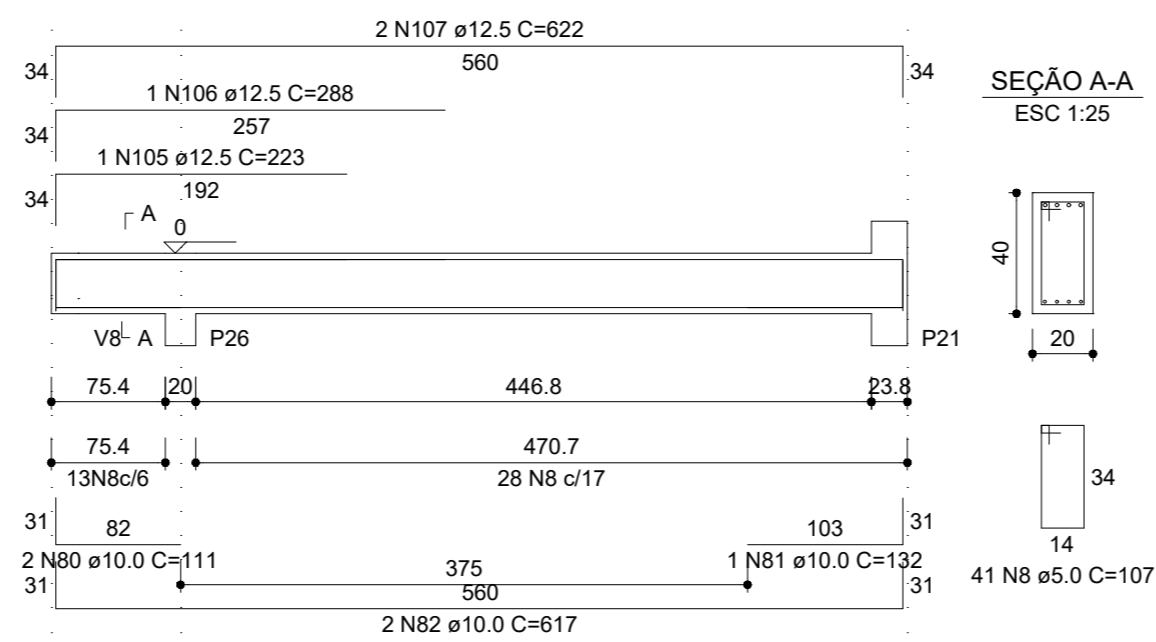
V22
ESC 1:50



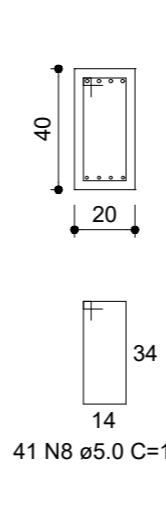
SEÇÃO A-A
ESC 1:25



V23
ESC 1:50



SEÇÃO A-A
ESC 1:25



REVISÃO	DESCRIÇÃO	DATA	VISTO

OBRA/SERVIÇO: Detalhamento de vigas - Térreo
ENDEREÇO: Rua Osvaldo Aranha, Bairro Centro, Taquari/RS
TÍTULO: REFORMA DO CENTRO DE CULTURA E TURISMO

PROPRIETÁRIO:

 PREFEITURA DE TAQUARI

RESPONSÁVEL TÉCNICO PELO PROJETO ESTRUTURAL:

 SÉRGIO VINÍCIUS NOSCHANG - ENG. CIVIL - CREA RS152282

PRANCHA Nº:
EST.
06/20

386,12 m ² ÁREA	1/50 ESCALA	Julho/2023 DATA	0 REVISÃO
-------------------------------	----------------	--------------------	--------------