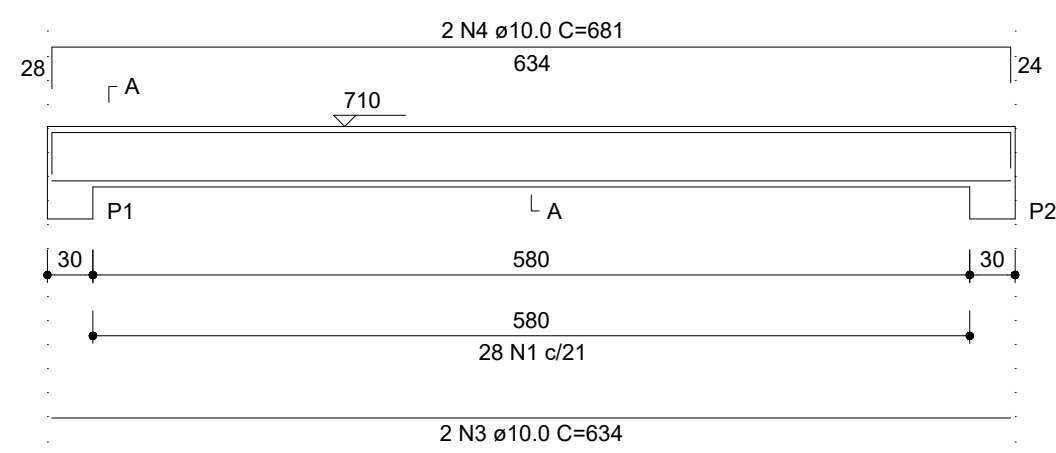


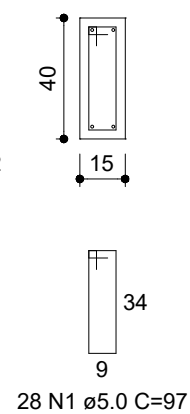
V1

ESC 1:50



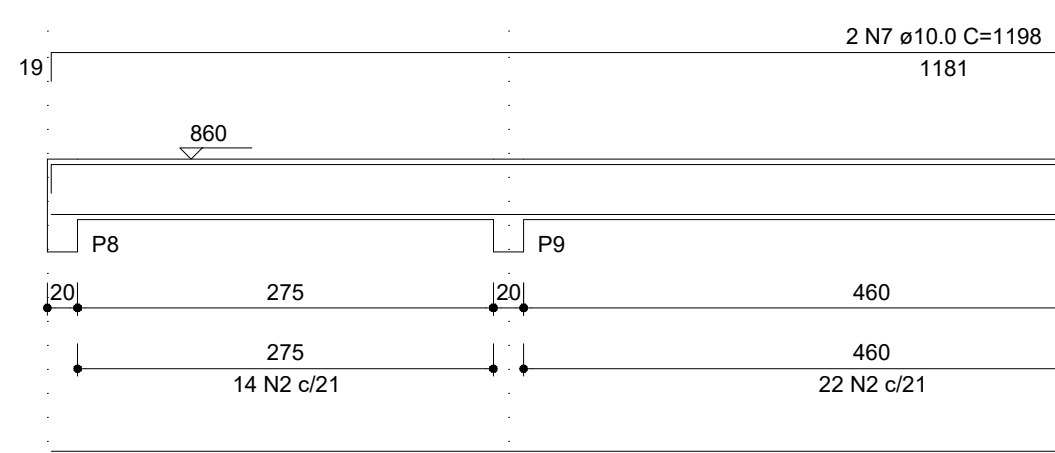
SEÇÃO A-A

ESC 1:25



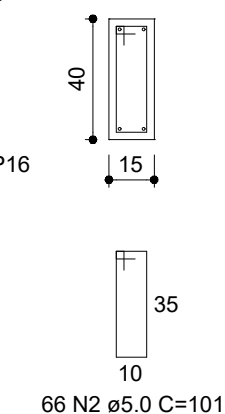
V2

ESC 1:50



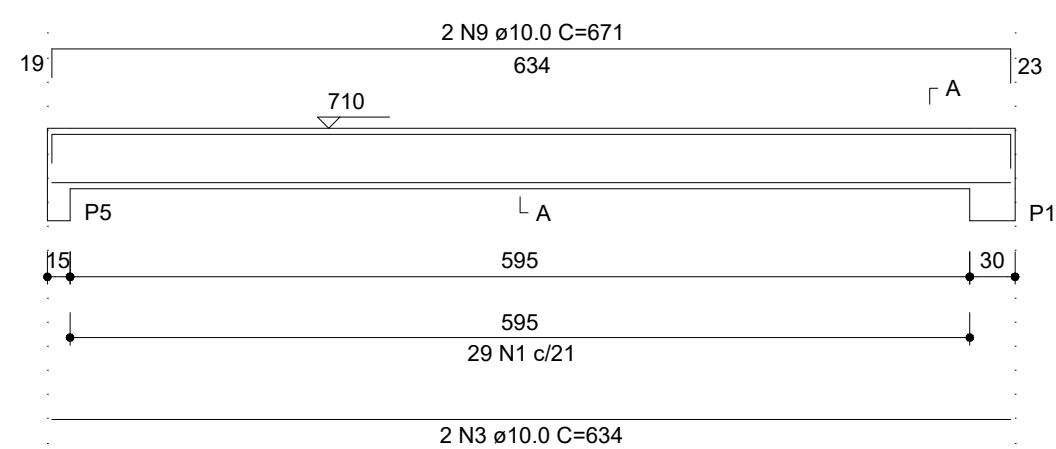
SEÇÃO A-A

ESC 1:25



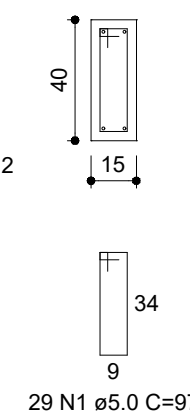
V3

ESC 1:50



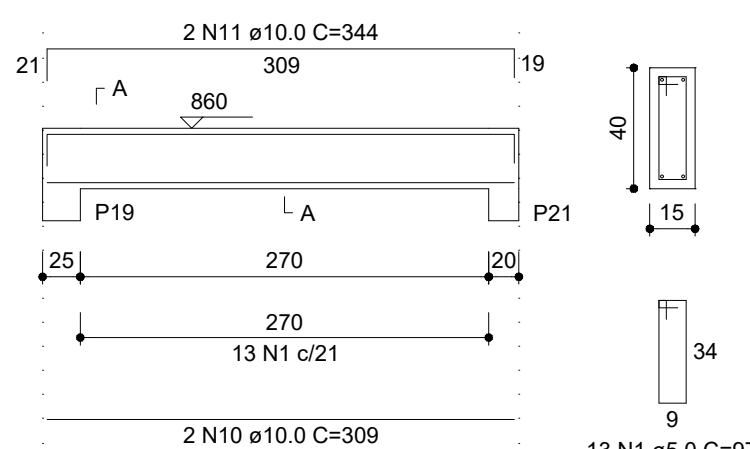
SEÇÃO A-A

ESC 1:25



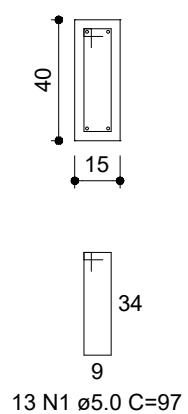
V4

ESC 1:50



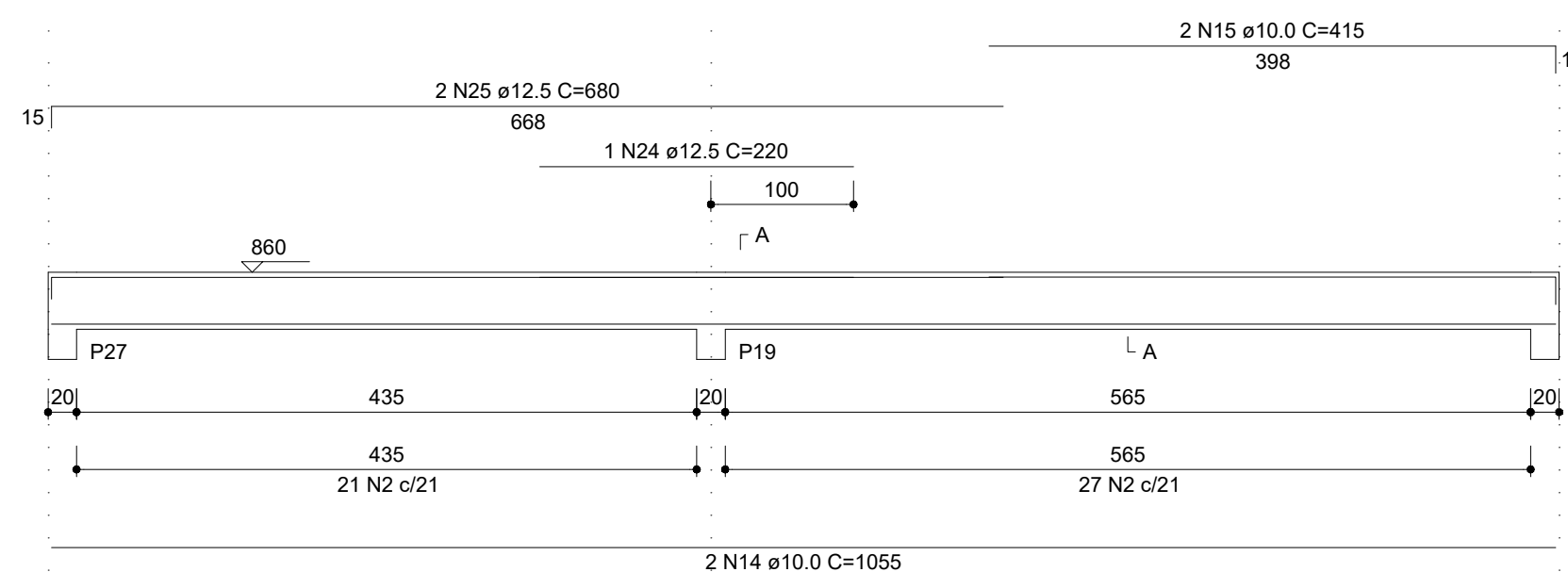
SEÇÃO A-A

ESC 1:25



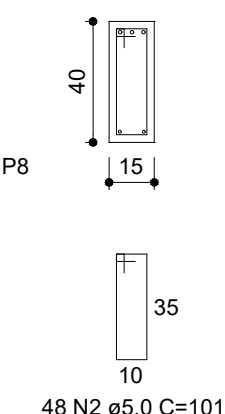
V6

ESC 1:50



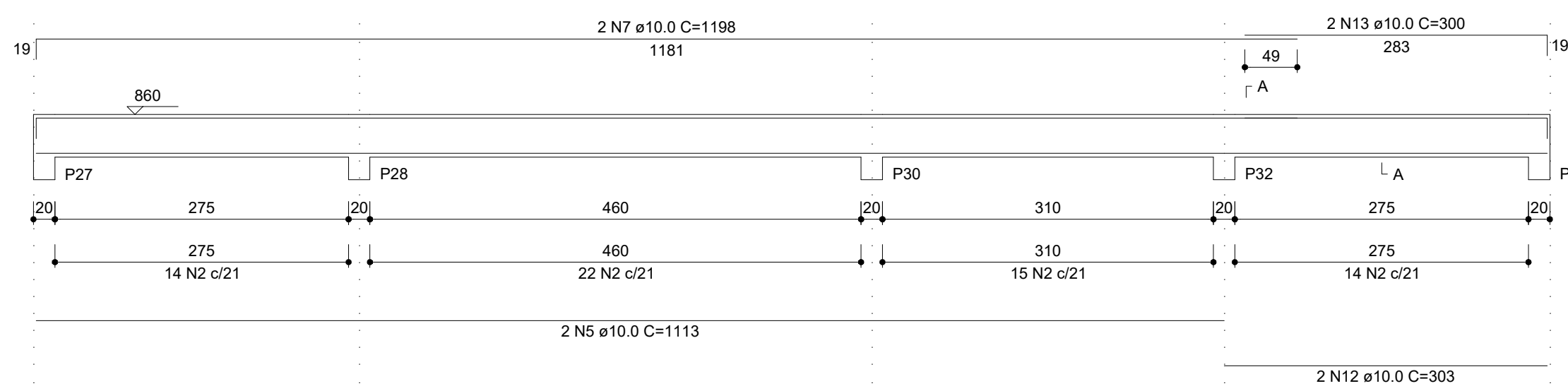
SEÇÃO A-A

ESC 1:25



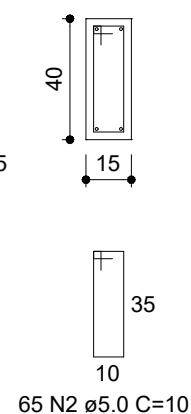
V5

ESC 1:50



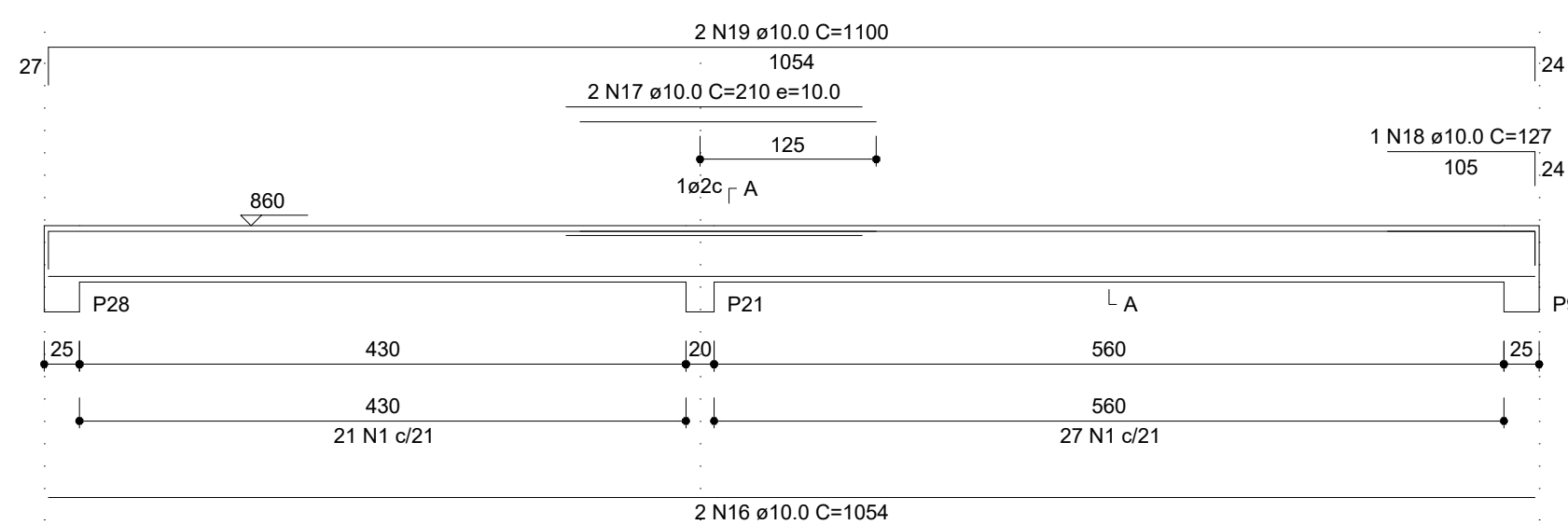
SEÇÃO A-A

ESC 1:25



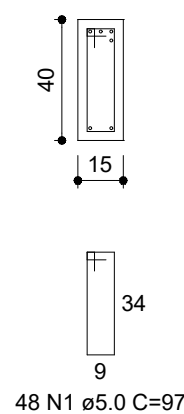
V7

ESC 1:50



SEÇÃO A-A

ESC 1:25



REVISÃO	DESCRIÇÃO	DATA	VISTO

OBRA/SERVIÇO: Detalhamento de vigas - Pavimento Cobertura

ENDEREÇO: Rua Osvaldo Aranha, Bairro Centro, Taquari/RS

TÍTULO: REFORMA DO CENTRO DE CULTURA E TURISMO

PROPRIETÁRIO: _____ PREFEITURA DE TAQUARI	PRANCHA Nº: EST. 13/20
RESPONSÁVEL TÉCNICO PELO PROJETO ESTRUTURAL _____ SÉRGIO VINÍCIUS NOSCHANG - ENG. CIVIL - CREA RS152282	O REVISÃO

386,12 m ² ÁREA	1/50 ESCALA	Julho/2023 DATA	O REVISÃO
-------------------------------	----------------	--------------------	--------------