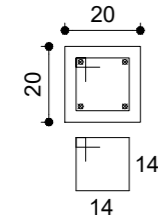
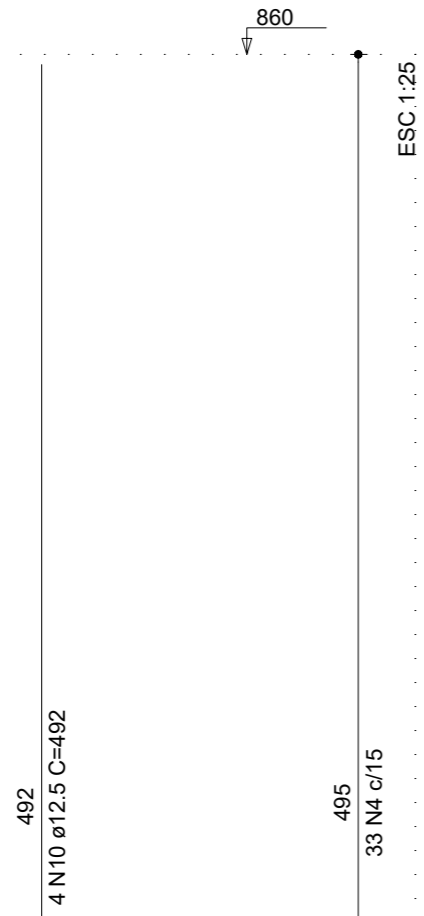


P8

COBERTURA - L3
ESC 1:20



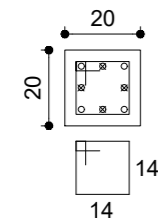
33 N4 ø5.0 C=67



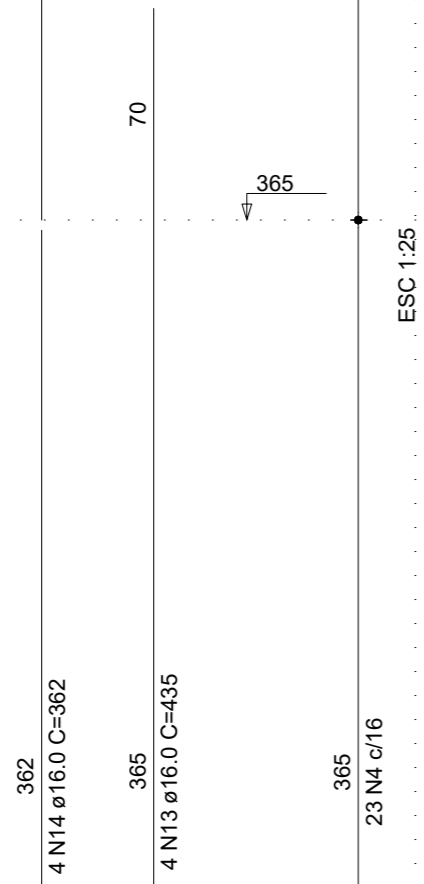
492
4 N10 ø12.5 C=492

495
33 N4 c/15

PAVIMENTO 2 - L2
ESC 1:20



23 N4 ø5.0 C=67



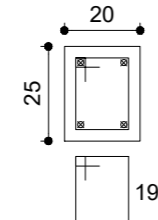
362
4 N14 ø16.0 C=362

365
4 N13 ø16.0 C=435

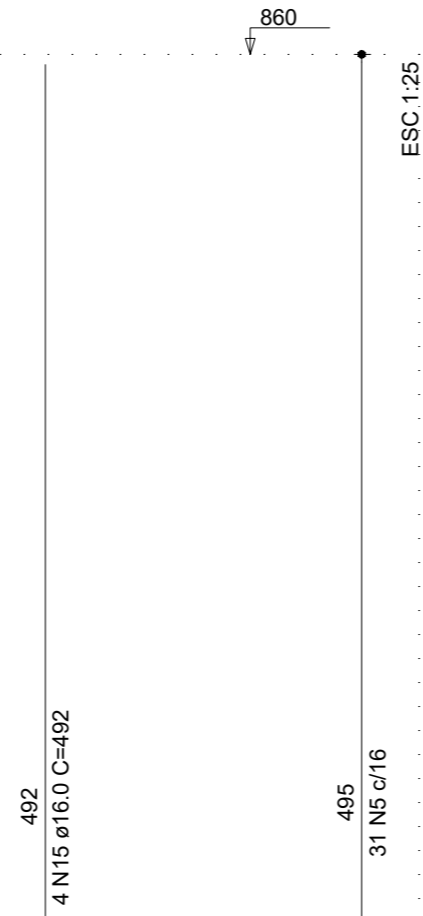
365
23 N4 c/16

P9

COBERTURA - L3
ESC 1:20



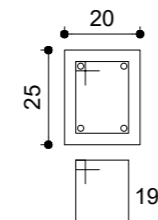
31 N5 ø5.0 C=77



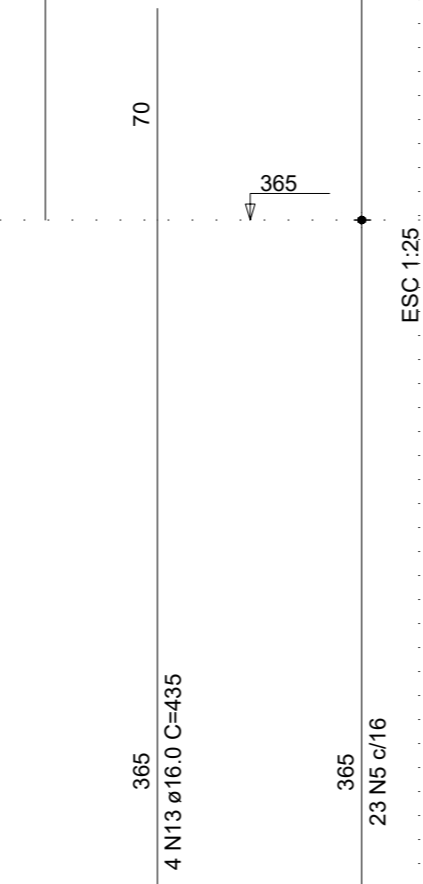
492
4 N15 ø16.0 C=492

495
31 N5 c/16

PAVIMENTO 2 - L2
ESC 1:20



23 N5 ø5.0 C=77

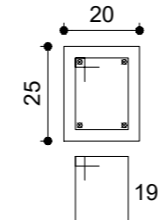


365
4 N13 ø16.0 C=435

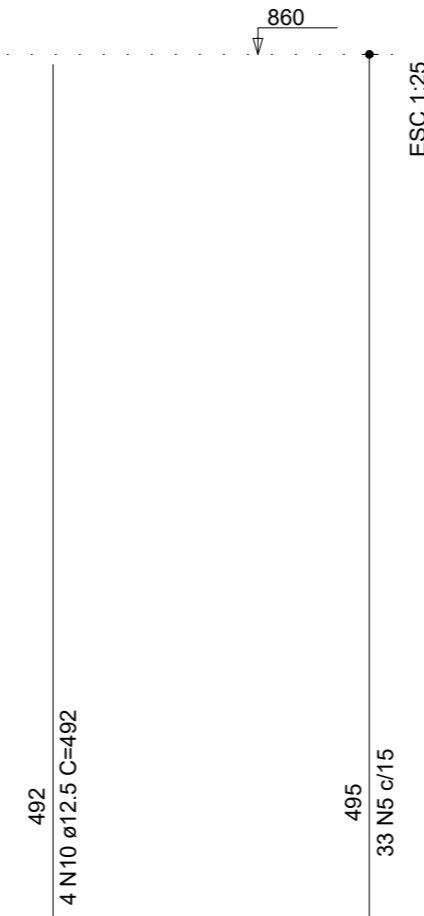
365
23 N5 c/16

P10

COBERTURA - L3
ESC 1:20



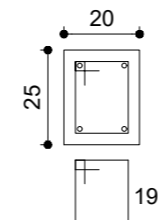
33 N5 ø5.0 C=77



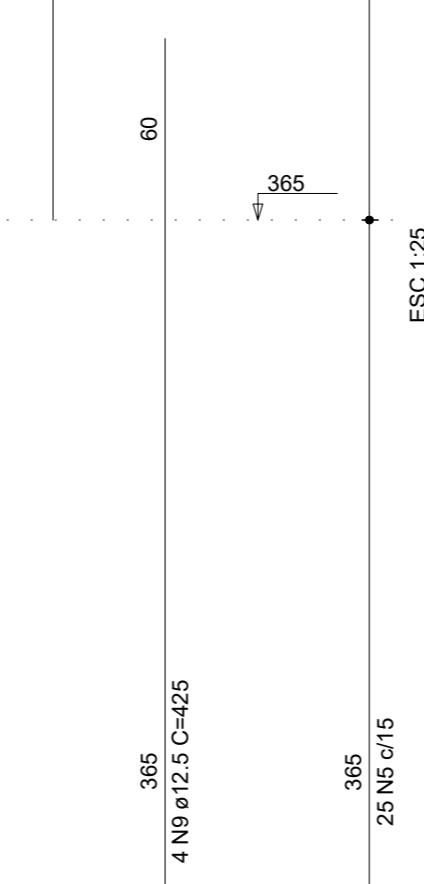
492
4 N10 ø12.5 C=492

495
33 N5 c/15

PAVIMENTO 2 - L2
ESC 1:20



25 N5 ø5.0 C=77



365
4 N9 ø12.5 C=425

365
25 N5 c/15

REVISÃO	DESCRIÇÃO	DATA	VISTO

OBRA/SERVIÇO: Detalhamento de pilares

ENDEREÇO: Rua Osvaldo Aranha, Bairro Centro, Taquari/RS

TÍTULO: REFORMA DO CENTRO DE CULTURA E TURISMO

PROPRIETÁRIO:
PREFEITURA DE TAQUARI

RESPONSÁVEL TÉCNICO PELO PROJETO ESTRUTURAL
SÉRGIO VINÍCIUS NOSCHANG - ENG. CIVIL - CREA RS152282

PRANCHA Nº:
EST.
16/20

386,12 m ² ÁREA	1/50 ESCALA	Julho/2023 DATA	0 REVISÃO
-------------------------------	----------------	--------------------	--------------