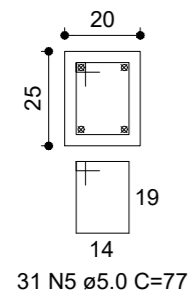
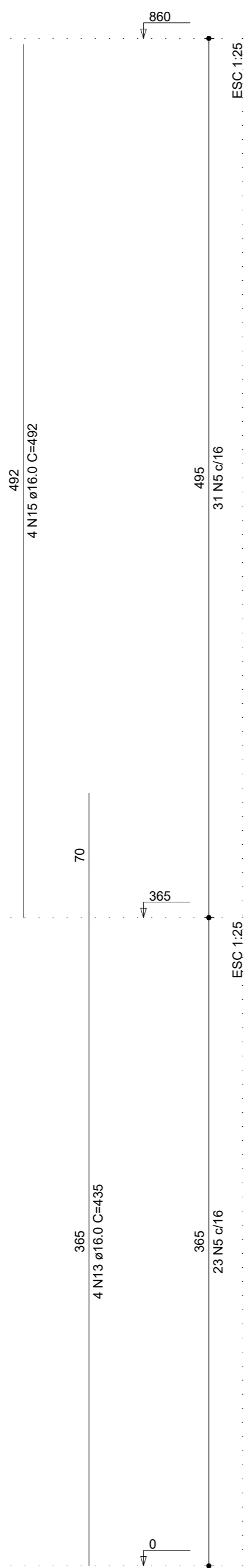


P11

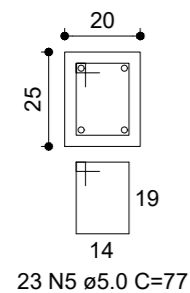
COBERTURA - L3
ESC 1:20



31 N5 ø5.0 C=77



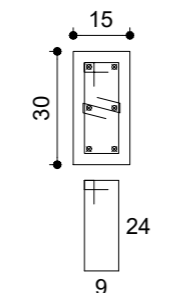
PAVIMENTO 2 - L2
ESC 1:20



23 N5 ø5.0 C=77

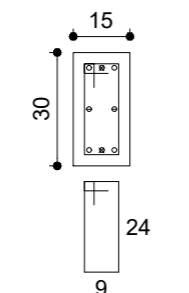
P12

COBERTURA - L3
ESC 1:20

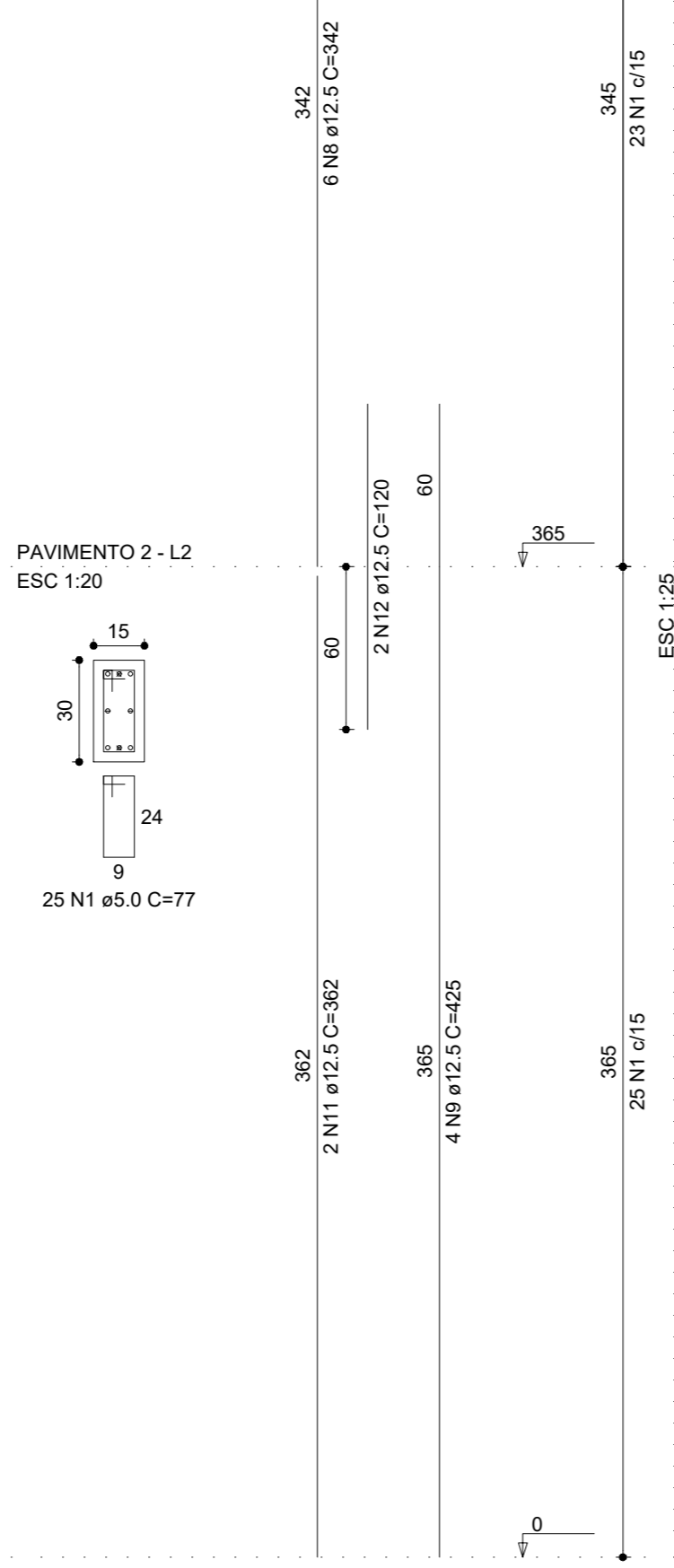


23 N1 ø5.0 C=77
23 N2 ø5.0 C=24

PAVIMENTO 2 - L2
ESC 1:20

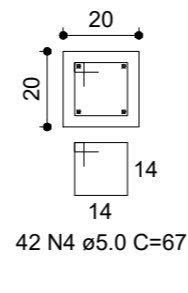


25 N1 ø5.0 C=77



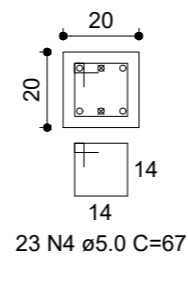
P16

COBERTURA - L3
ESC 1:20

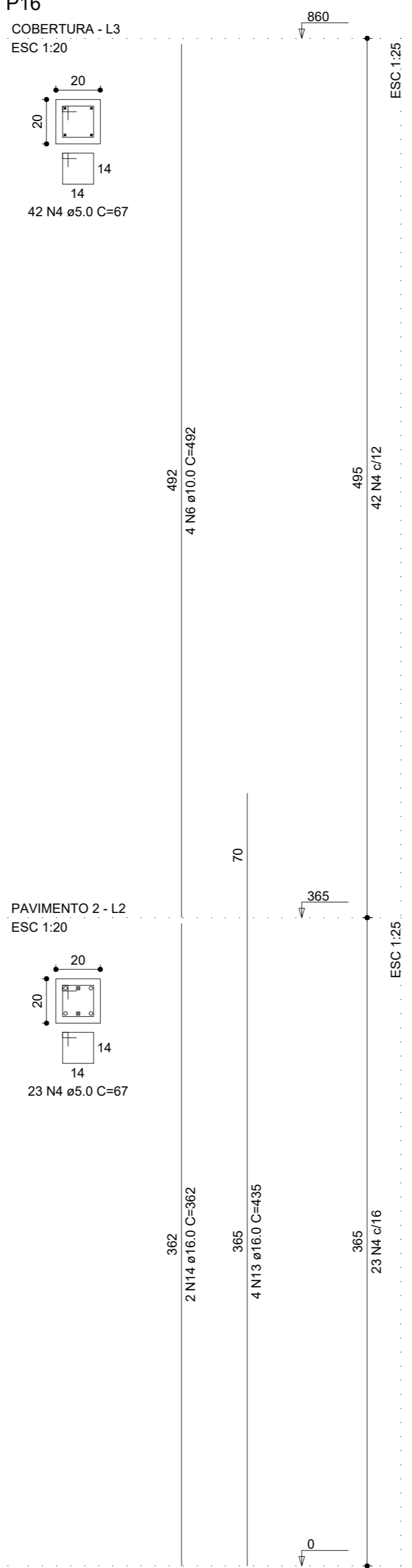


42 N4 ø5.0 C=67

PAVIMENTO 2 - L2
ESC 1:20



23 N4 ø5.0 C=67



REVISÃO	DESCRIÇÃO	DATA	VISTO

OBRA/SERVIÇO: Detalhamento de pilares

ENDEREÇO: Rua Osvaldo Aranha, Bairro Centro, Taquari/RS

TÍTULO: REFORMA DO CENTRO DE CULTURA E TURISMO

PROPRIETÁRIO:
PREFEITURA DE TAQUARI

RESPONSÁVEL TÉCNICO PELO PROJETO ESTRUTURAL
SÉRGIO VINÍCIUS NOSCHANG - ENG. CIVIL - CREA RS152282

PRANCHA Nº:
EST.
17/20

386,12 m ² ÁREA	1/50 ESCALA	Julho/2023 DATA	0 REVISÃO
-------------------------------	----------------	--------------------	--------------