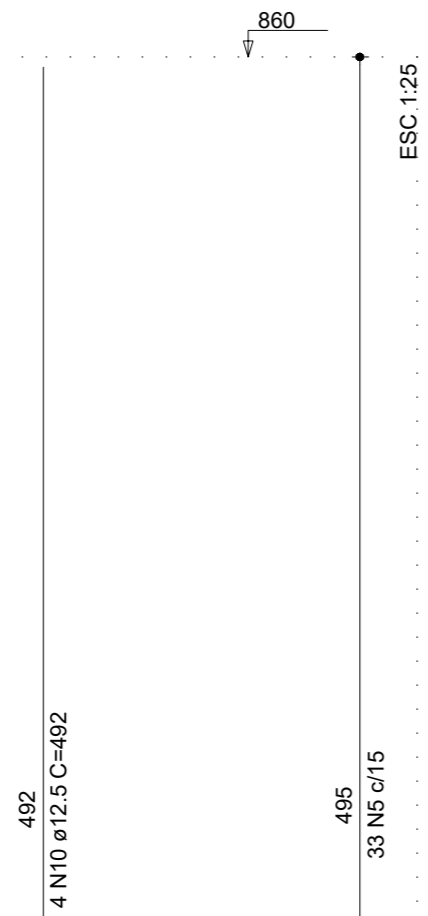
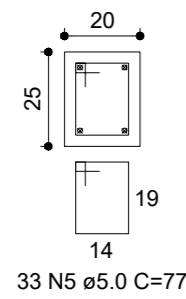
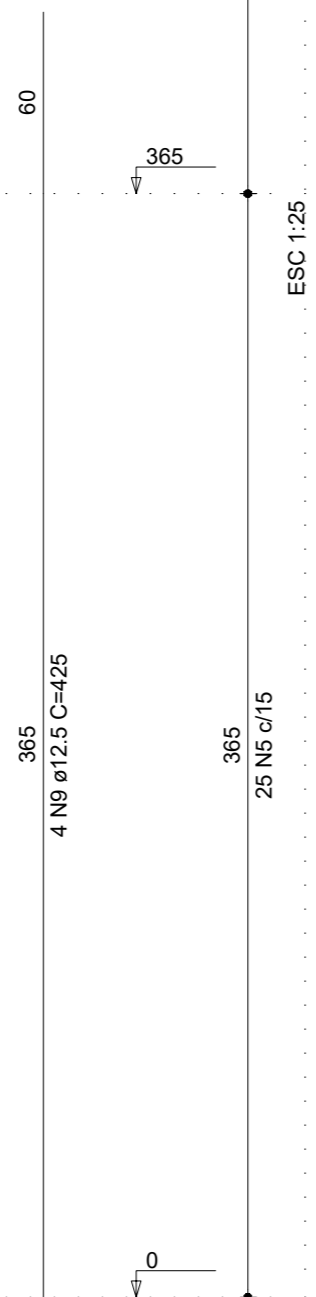
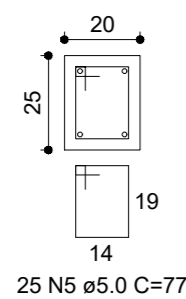


P19

COBERTURA - L3
ESC 1:20

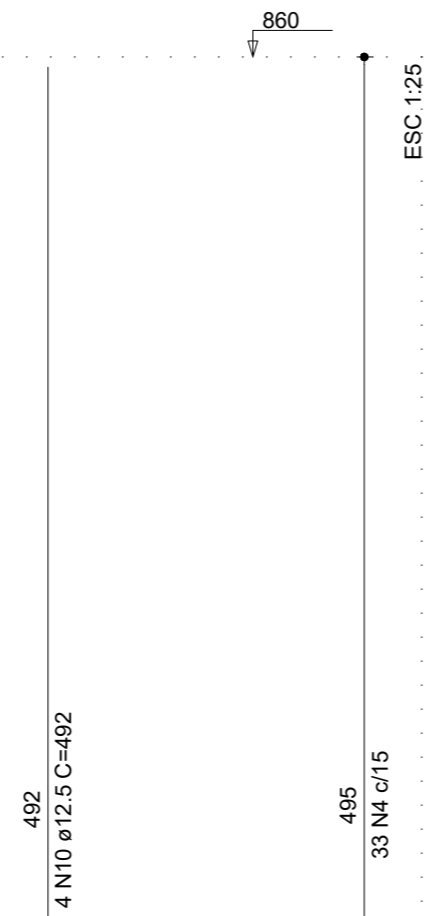
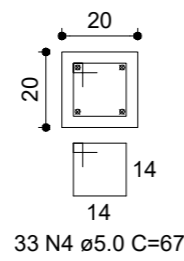


PAVIMENTO 2 - L2
ESC 1:20

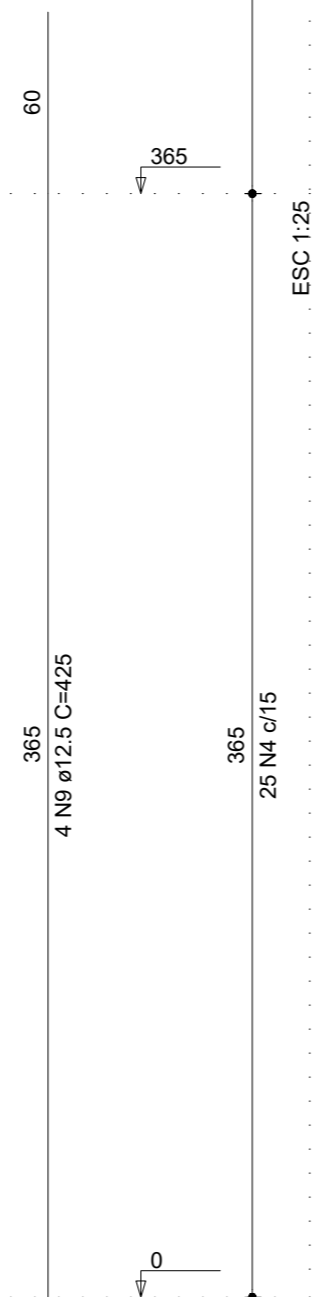
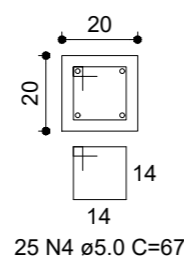


P21

COBERTURA - L3
ESC 1:20

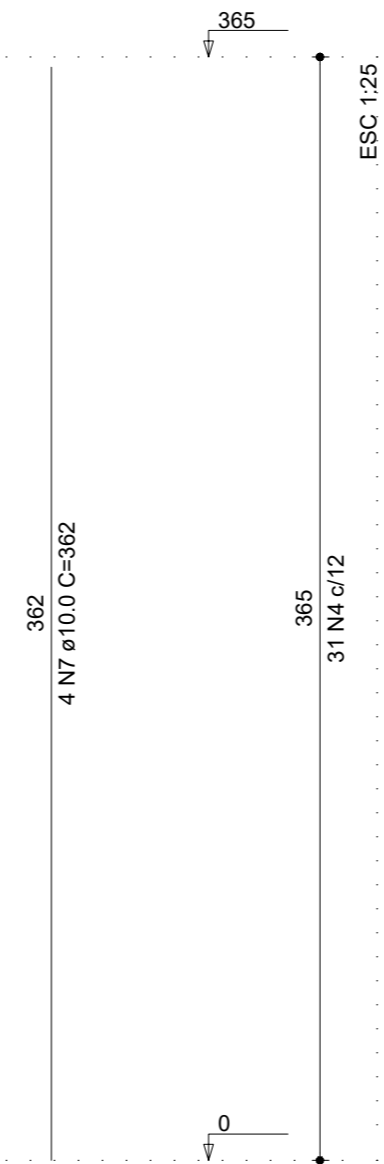
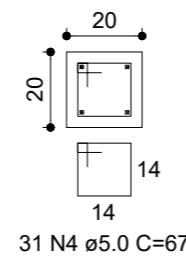


PAVIMENTO 2 - L2
ESC 1:20



P22

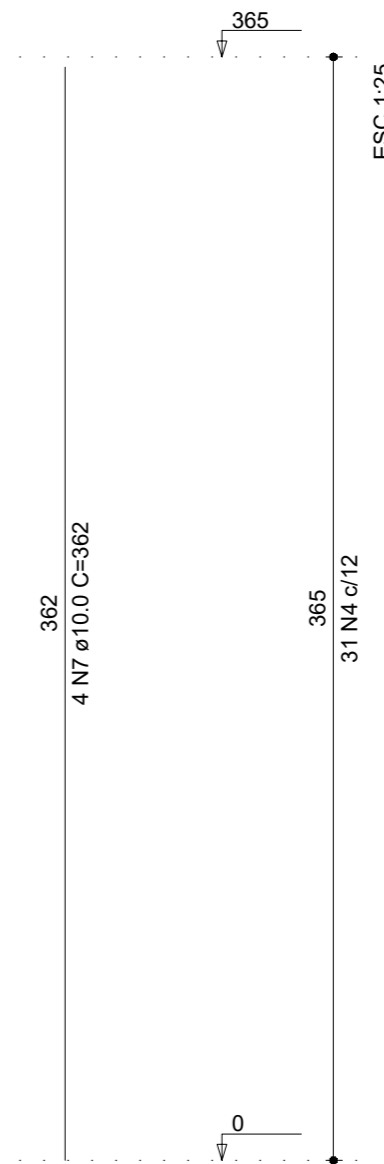
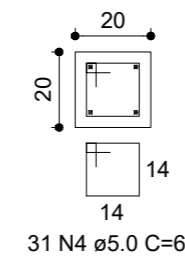
PAVIMENTO 2 - L2
ESC 1:20



TÉRREO - L1

P23

PAVIMENTO 2 - L2
ESC 1:20



TÉRREO - L1

REVISÃO	DESCRIÇÃO	DATA	VISTO

OBRA/SERVIÇO: Detalhamento de pilares

ENDEREÇO: Rua Osvaldo Aranha, Bairro Centro, Taquari/RS

TÍTULO: REFORMA DO CENTRO DE CULTURA E TURISMO

PROPRIETÁRIO:
PREFEITURA DE TAQUARI

RESPONSÁVEL TÉCNICO PELO PROJETO ESTRUTURAL:
SÉRGIO VINÍCIUS NOSCHANG - ENG. CIVIL - CREA RS152282

PRANCHA Nº:
EST.
18/20

386,12 m ² ÁREA	1/50 ESCALA	Julho/2023 DATA	0 REVISÃO
-------------------------------	----------------	--------------------	--------------