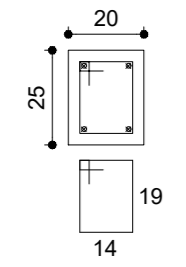


P30

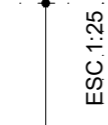
COBERTURA - L3  
ESC 1:20



33 N5 ø5.0 C=77

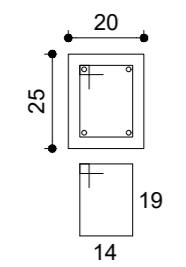
492  
4 N10 ø12.5 C=492

860



495  
33 N5 c/15  
ESC 1:25

PAVIMENTO 2 - L2  
ESC 1:20

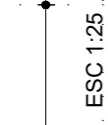


25 N5 ø5.0 C=77

60

365  
4 N9 ø12.5 C=425

365

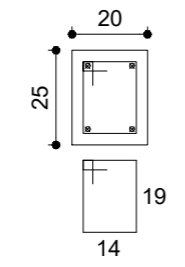


365  
25 N5 c/15  
ESC 1:25

0

P32

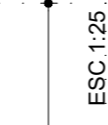
COBERTURA - L3  
ESC 1:20



33 N5 ø5.0 C=77

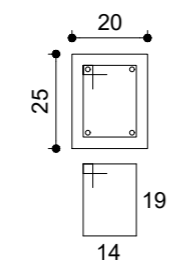
492  
4 N10 ø12.5 C=492

860



495  
33 N5 c/15  
ESC 1:25

PAVIMENTO 2 - L2  
ESC 1:20

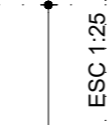


25 N5 ø5.0 C=77

60

365  
4 N9 ø12.5 C=425

365

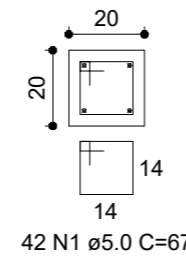


365  
25 N5 c/15  
ESC 1:25

0

P35

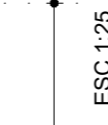
COBERTURA - L3  
ESC 1:20



42 N1 ø5.0 C=67

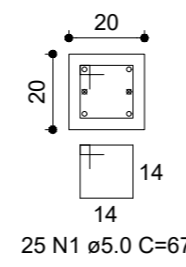
492  
4 N2 ø10.0 C=492

860



495  
42 N1 c/12  
ESC 1:25

PAVIMENTO 2 - L2  
ESC 1:20



25 N1 ø5.0 C=67

60

362  
2 N3 ø12.5 C=362

365



365  
4 N4 ø12.5 C=425

0

REVISÃO	DESCRIÇÃO	DATA	VISTO

OBRA/SERVIÇO: Detalhamento de pilares

ENDEREÇO: Rua Osvaldo Aranha, Bairro Centro, Taquari/RS

TÍTULO: REFORMA DO CENTRO DE CULTURA E TURISMO

PROPRIETÁRIO:  
PREFEITURA DE TAQUARI

RESPONSÁVEL TÉCNICO PELO PROJETO ESTRUTURAL  
SÉRGIO VINÍCIUS NOSCHANG - ENG. CIVIL - CREA RS152282

PRANCHA Nº:  
**EST.**  
**20/20**

386,12 m <sup>2</sup> ÁREA	1/50 ESCALA	Julho/2023 DATA	0 REVISÃO
-------------------------------	----------------	--------------------	--------------