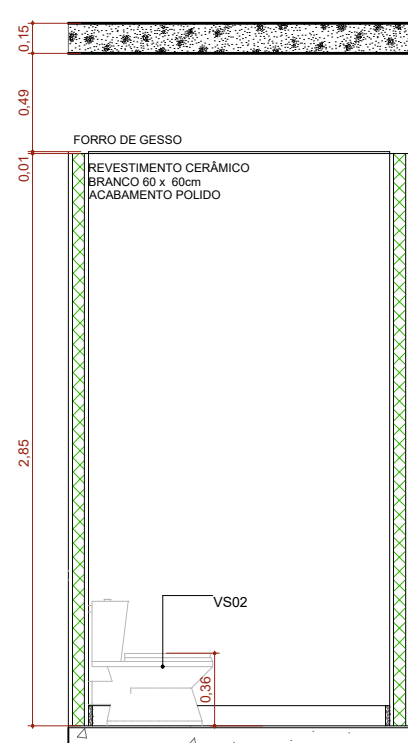
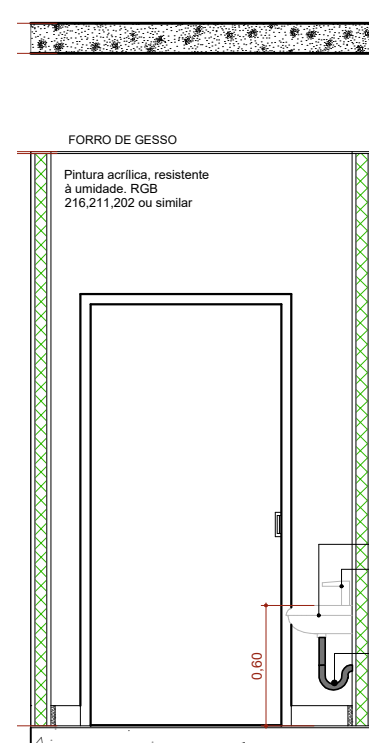


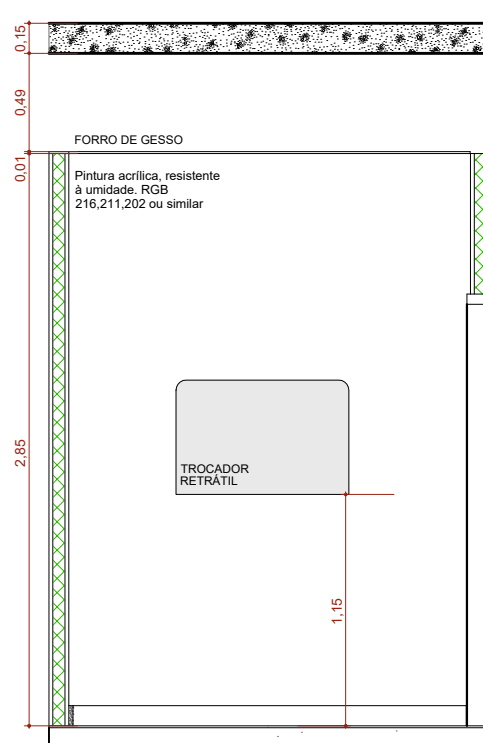
A.M.1 Sanit. Infantil/Fraldário
Escala: 1:25



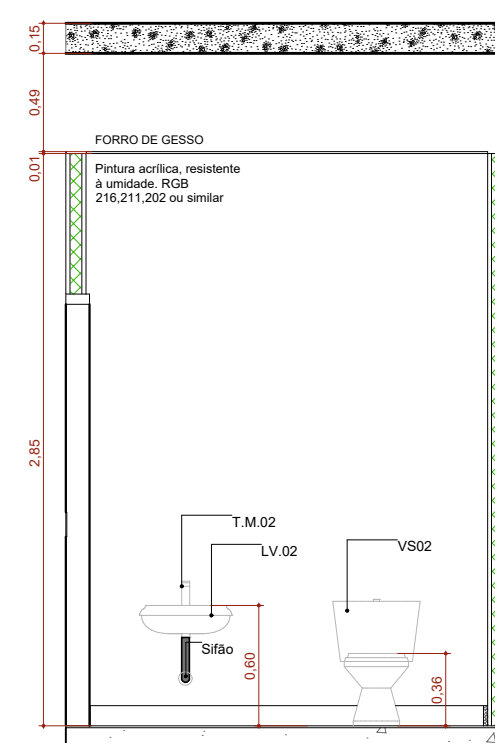
A.M.01 VISTA 1
Escala: 1:25



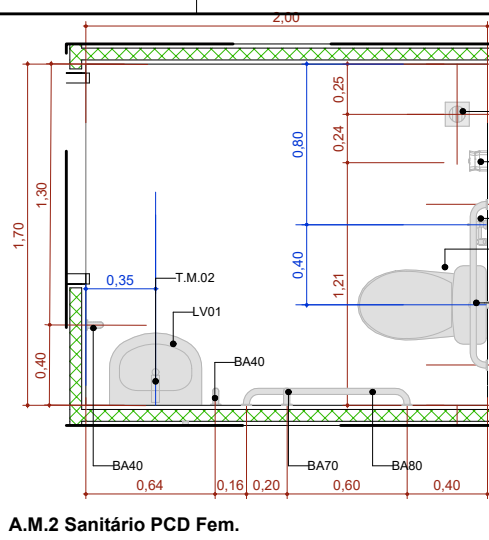
A.M.01 VISTA 2
Escala: 1:25



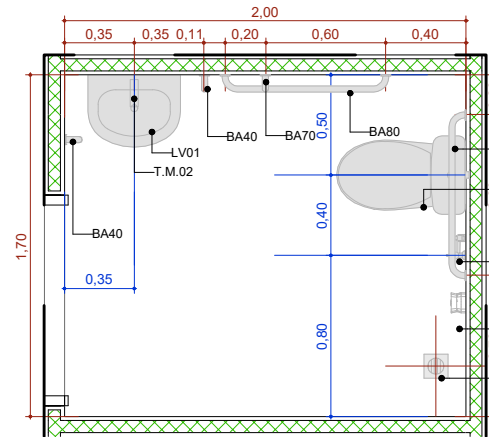
A.M.01 VISTA 3
Escala: 1:25



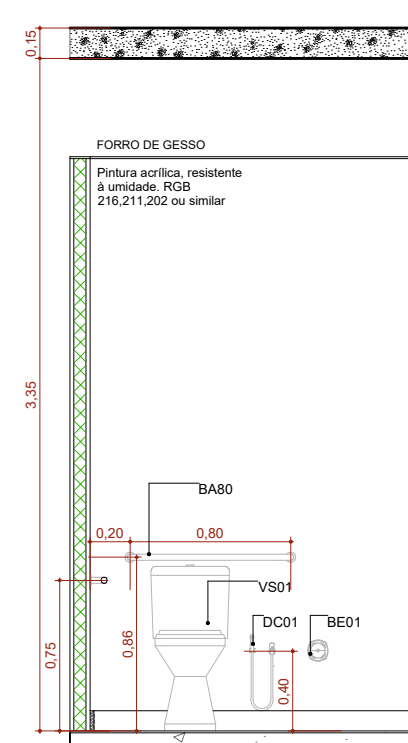
A.M.01 VISTA 4
Escala: 1:25



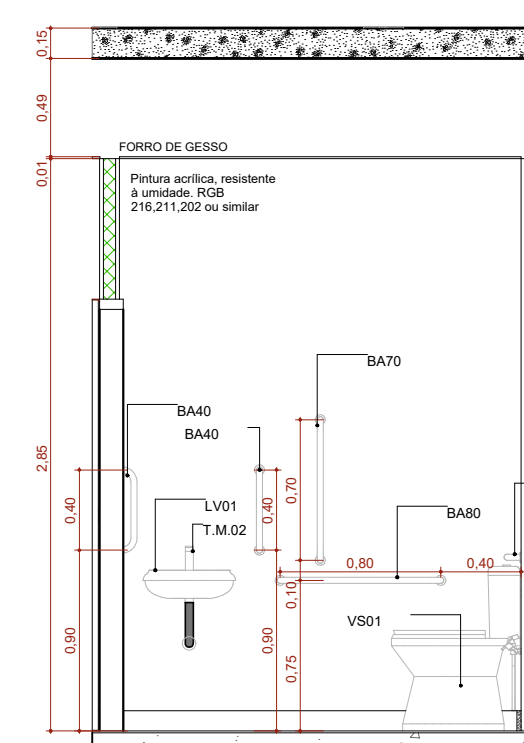
A.M.2 Sanitário PCD Fem.
Escala: 1:25



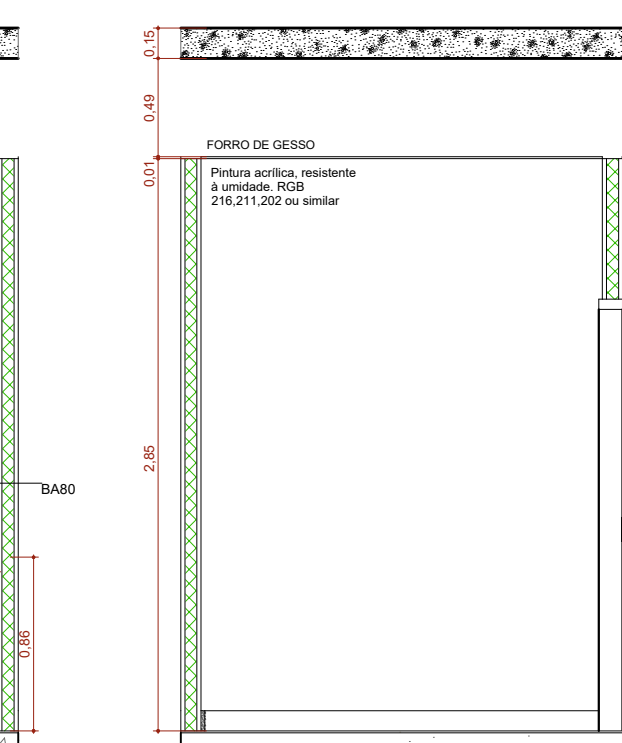
A.M.3 Sanitário PCD Masc.
Escala: 1:25



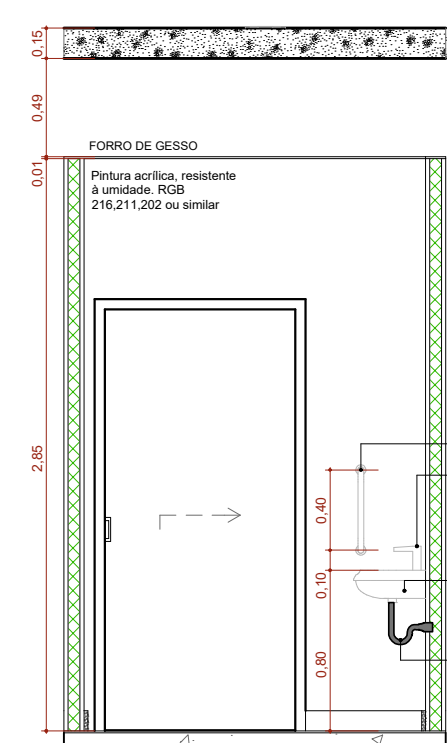
A.M.03 VISTA 1
Escala: 1:25



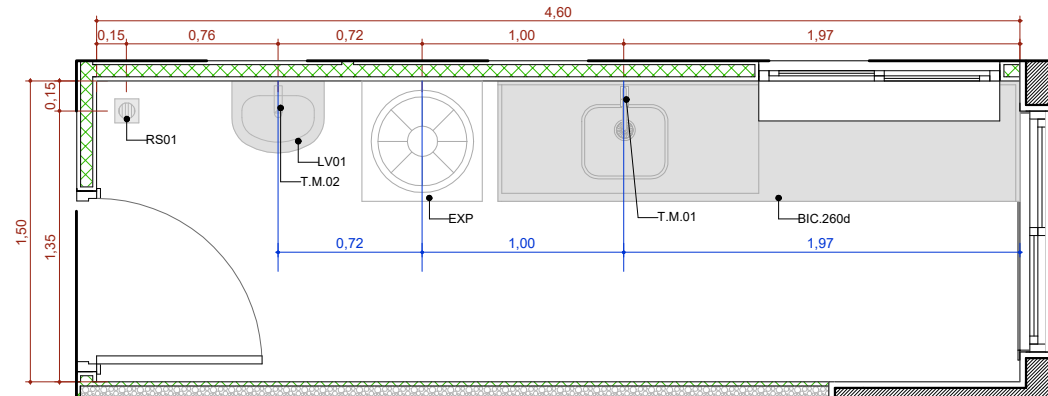
A.M.03 VISTA 2
Escala: 1:25



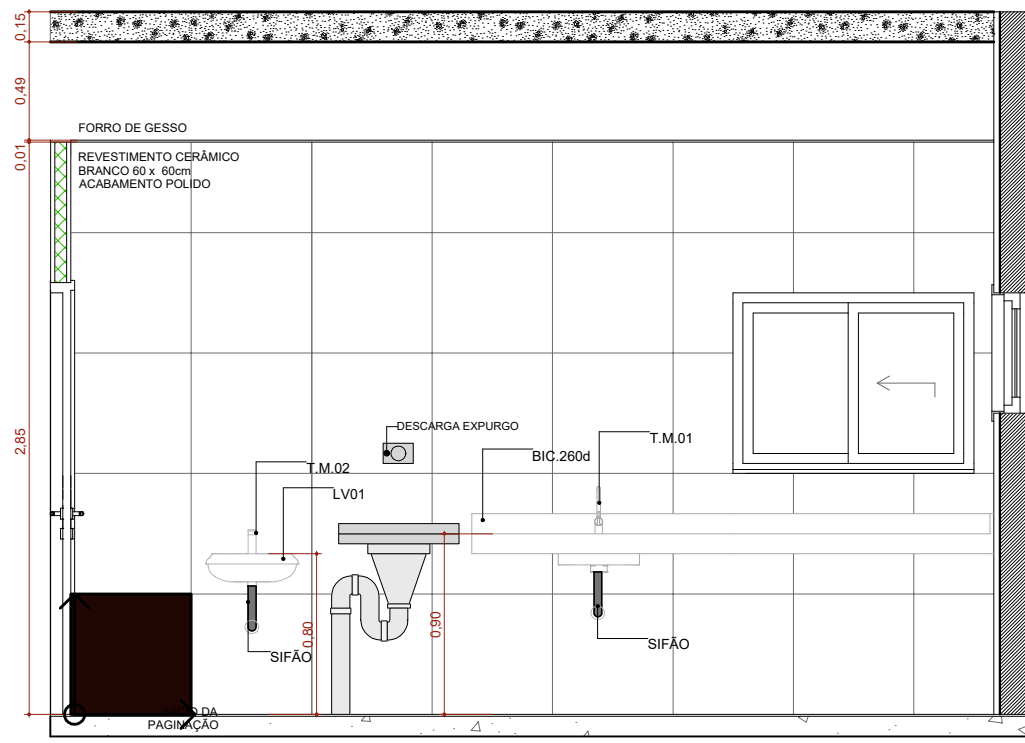
A.M.03 VISTA 3
Escala: 1:25



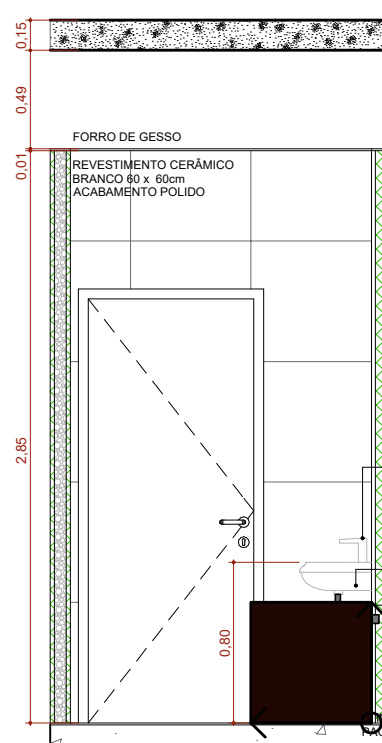
A.M.03 VISTA 4
Escala: 1:25



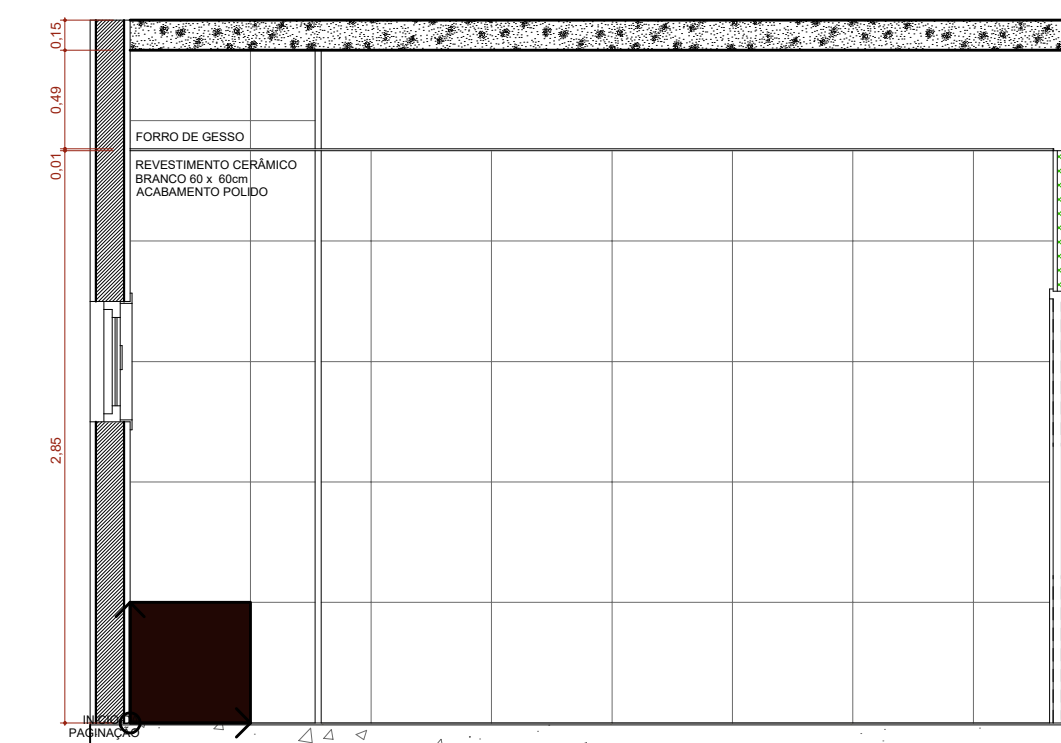
A.M.5 Expurgo
Escala: 1:25



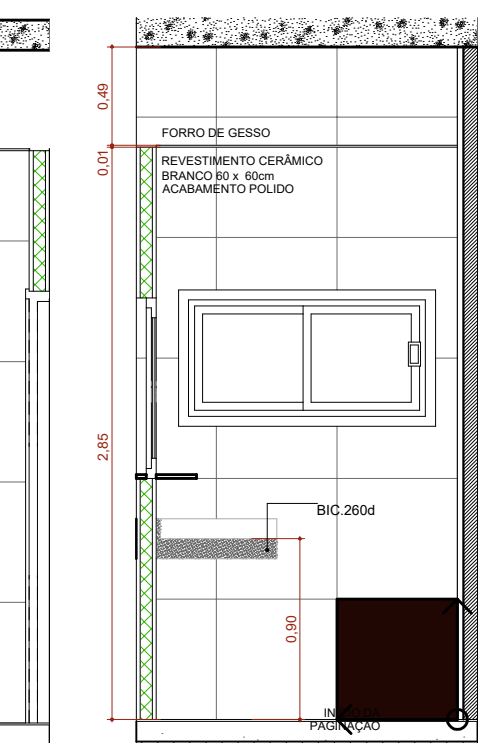
A.M.05 VISTA 1
Escala: 1:25



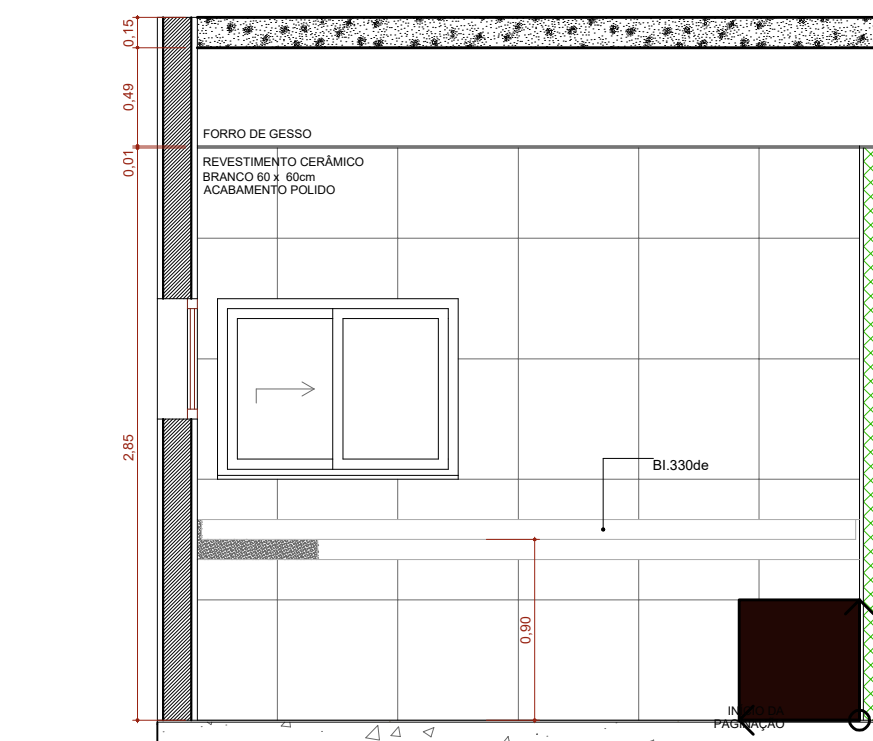
A.M.05 VISTA 2
Escala: 1:25



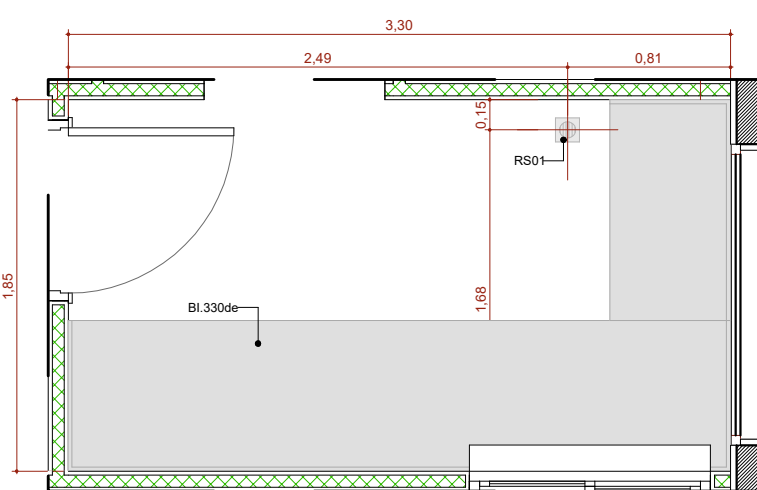
A.M.05 VISTA 3
Escala: 1:25



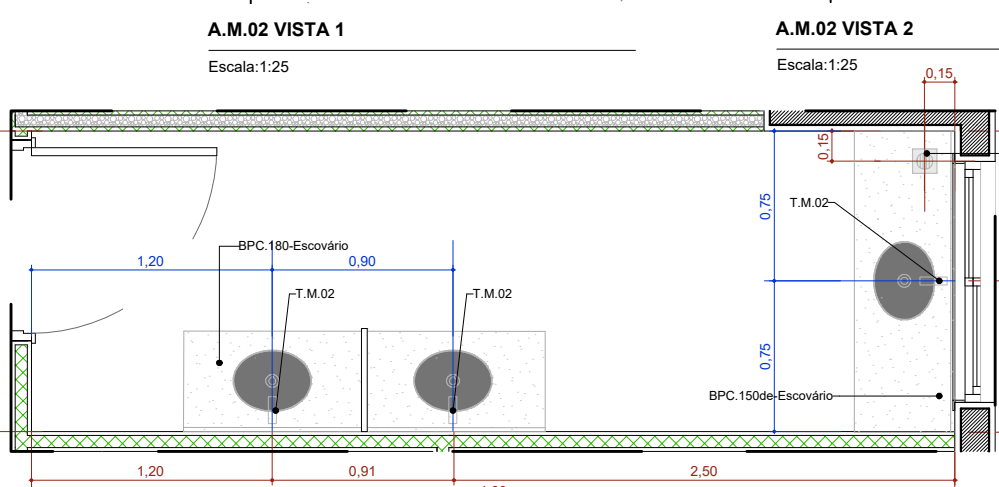
A.M.05 VISTA 4
Escala: 1:25



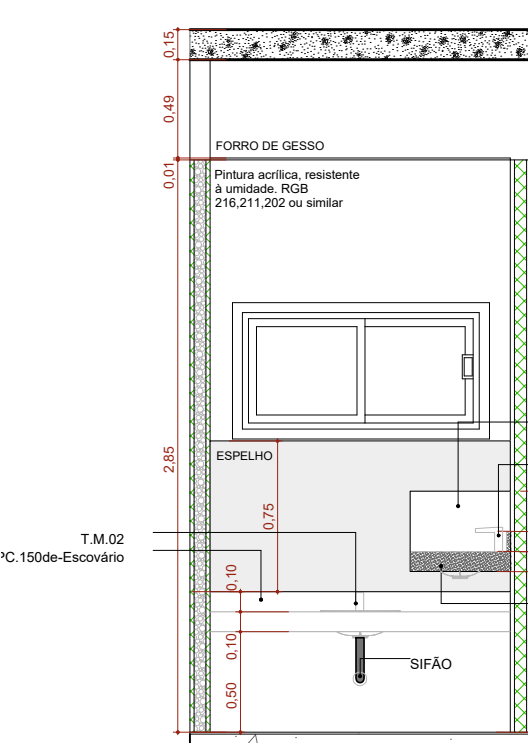
A.M.06 VISTA 3
Escala: 1:25



A.M.6 Esterilização
Escala: 1:25



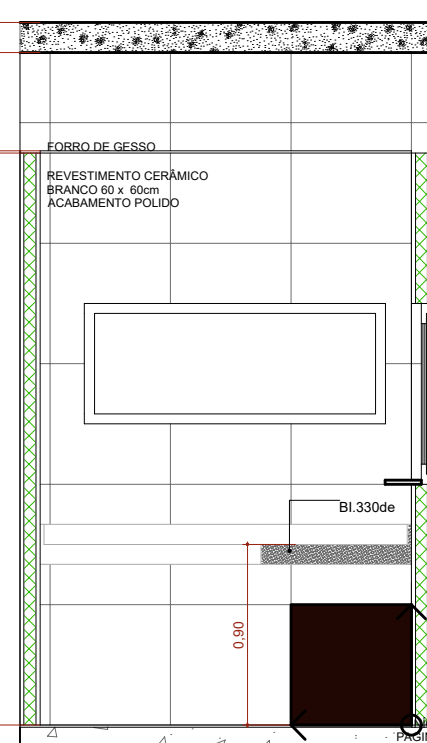
A.M.02 VISTA 1
Escala: 1:25



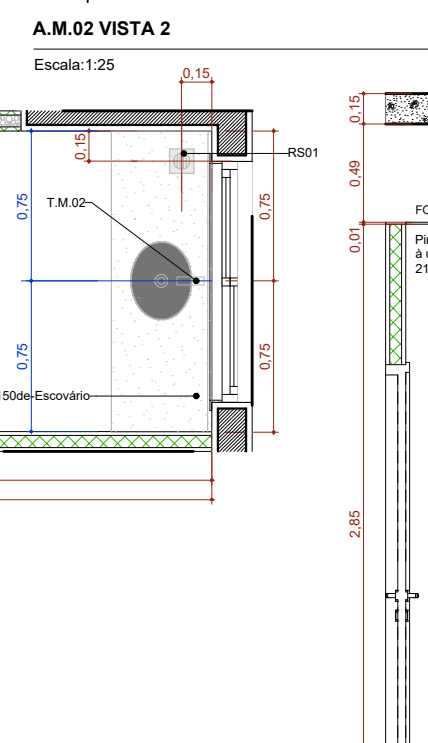
A.M.04 VISTA 2
Escala: 1:25



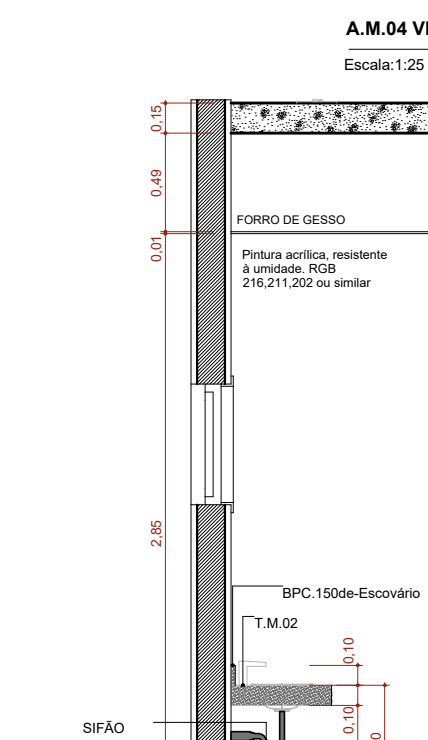
A.M.04 VISTA 3
Escala: 1:25



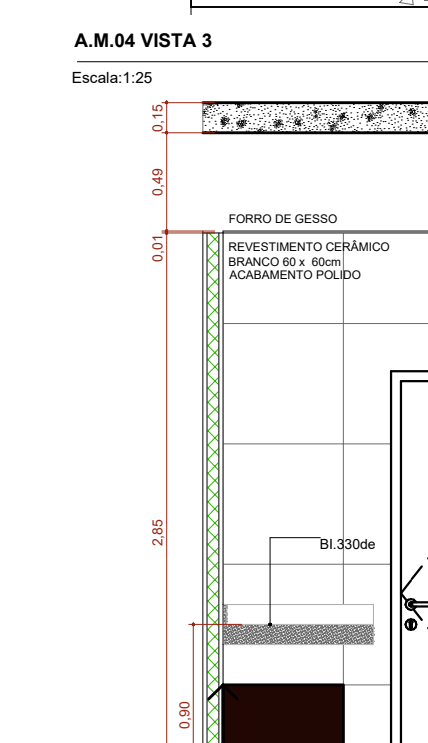
A.M.06 VISTA 1
Escala: 1:25



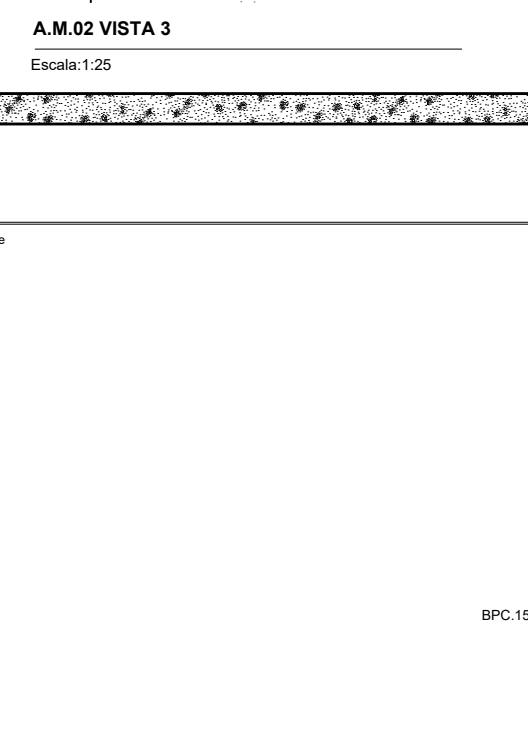
A.M.02 VISTA 2
Escala: 1:25



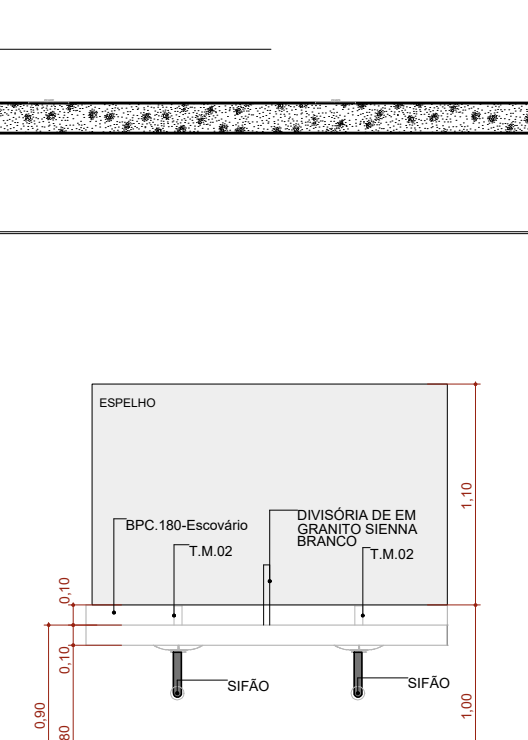
A.M.04 VISTA 4
Escala: 1:25



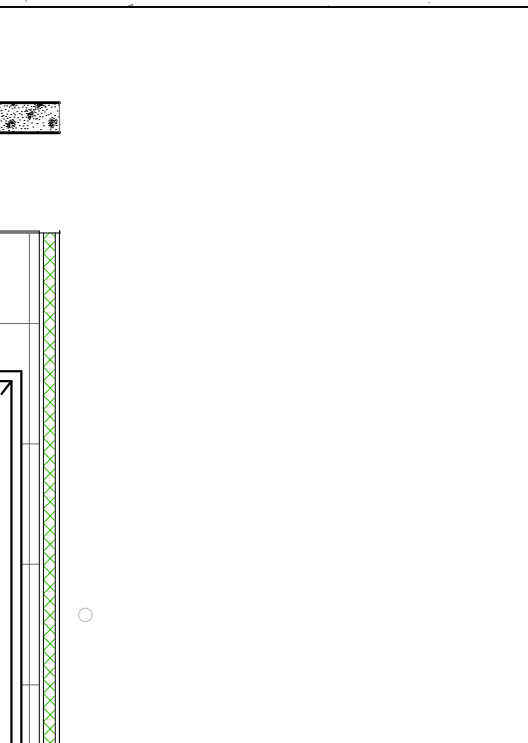
A.M.06 VISTA 2
Escala: 1:25



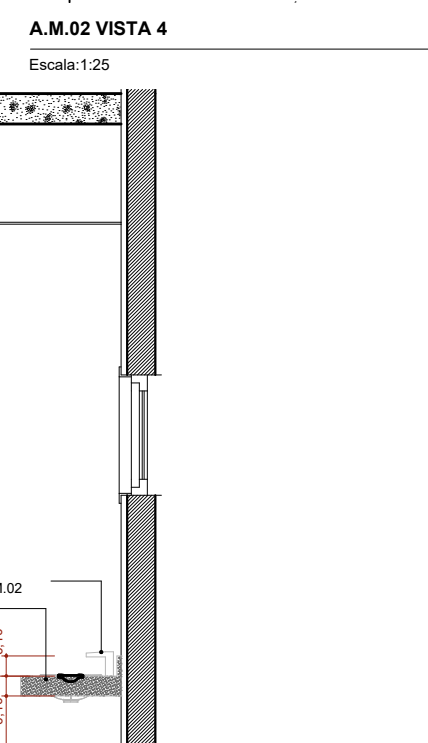
A.M.02 VISTA 3
Escala: 1:25



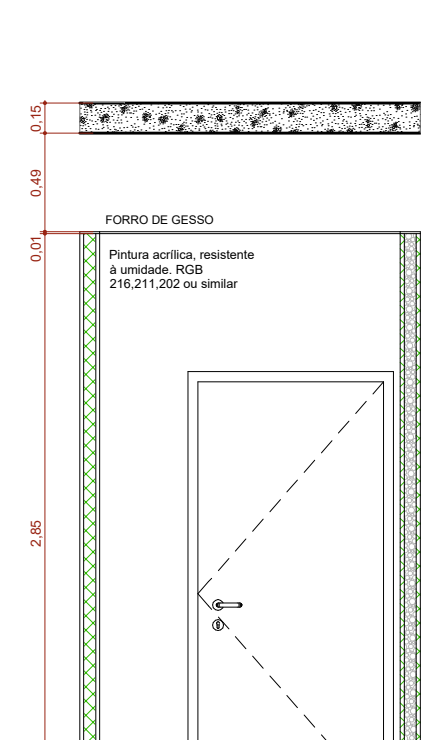
A.M.04 VISTA 1
Escala: 1:25



A.M.06 VISTA 3
Escala: 1:25



A.M.02 VISTA 4
Escala: 1:25



A.M.04 VISTA 2
Escala: 1:25



A.M.06 VISTA 4
Escala: 1:25

TÍTULO DO PROJETO
UNIDADE BÁSICA DE SAÚDE - PORTE 1

PROPRIETÁRIO
MINISTÉRIO DA SAÚDE
SECRETARIA DE ATENÇÃO PRIMÁRIA À SAÚDE
Departamento de Engenharia & Arquitetura
Endereço: Rua José Leite Costa, s/nº, Bairro Prado - Taquari/RS

Município de Taquari: André Luis Barcellos Brito
Prefeito Municipal

Resp. Técnico: Flávio de Andrade
Engº Civil & Engº de Segurança do Trabalho
CREA: 111.663

TÍTULO DA PRANCHA
DETALHAMENTO ÁREAS MOLHADAS 01

DESCRIÇÃO DA ETAPA
PROJETO EXECUTIVO

NOME PRANCHA - ARQUIVO MS_UBS1_PE_AQ_11.12_R00	REVISÃO R00	DATA 07/01/2026	ESCALA INDICADA
--	-----------------------	---------------------------	---------------------------

DIREITOS AUTORAIS RESERVADOS CONFORME LEGISLAÇÃO NACIONAL E INTERNACIONAL

FOLHA Nº 19