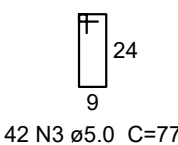
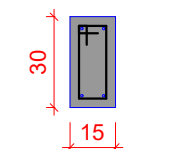
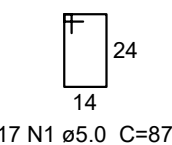
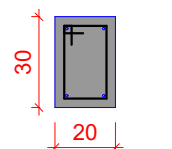


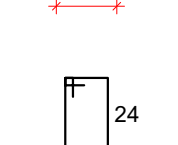
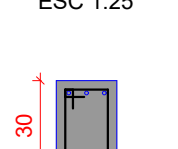
ESC 1:50



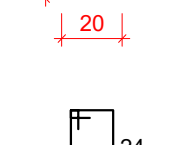
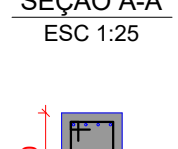
ESC 1:50



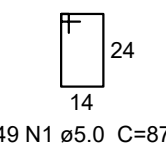
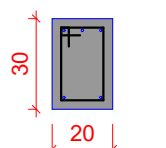
ESC 1:50



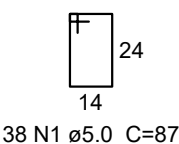
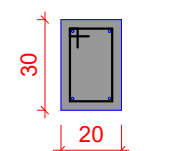
ESC 1:50



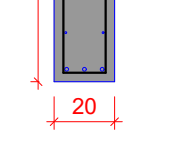
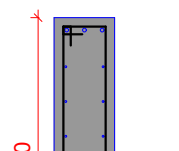
ESC 1:50



ESC 1:50



ESC 1:50



Resumo do aço

AÇO	DIAM (mm)	C.TOTAL (m)	PESO + 10 % (kg)
CA50	6.3	100.1	26.9
	8.0	145.3	63.1
	12.5	76.4	80.9
CA60	5.0	293.2	49.7

PESO TOTAL (kg)	
CA50	170.9
CA60	49.7

Volume de concreto (C-30) = 3.35 m³
Área de forma = 41.96 m²

- A** ORIENTAÇÃO DOS EIXOS DOS PILARES
- 1** ORIENTAÇÃO DOS EIXOS DOS PILARES



</