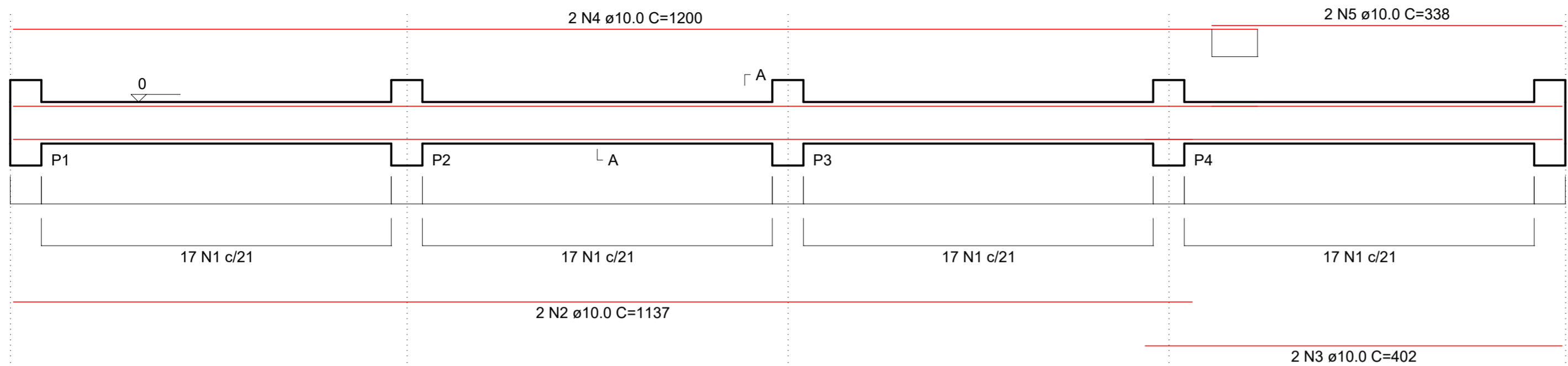
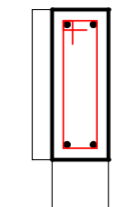


V1

ESC 1:50



SEÇÃO A-A



RELAÇÃO DO AÇO

V1
V4
V7

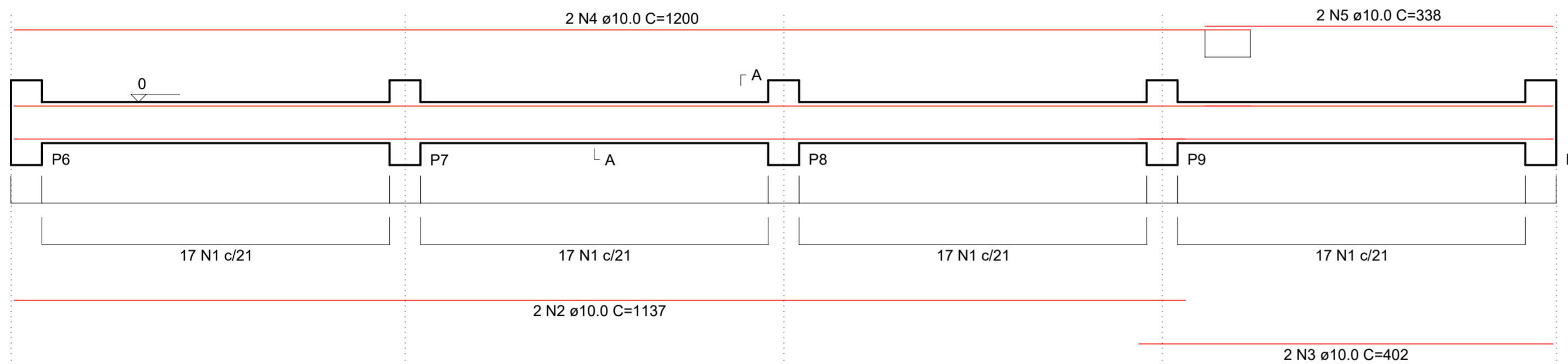
V2
V5

V3
V6

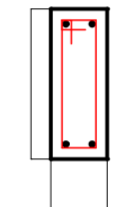
AÇO	N	DIAM (mm)	QUANT	C.UNIT (cm)	C.TOTAL (cm)
CA60	1	5.0	226	97	21922
CA50	2	10.0	4	1137	4548
	3	10.0	4	402	1608
	4	10.0	4	1200	4800
	5	10.0	4	338	1352
	6	10.0	4	394	1576
	7	10.0	10	433	4330
	8	10.0	6	413	2478

V2

ESC 1:50



SEÇÃO A-A



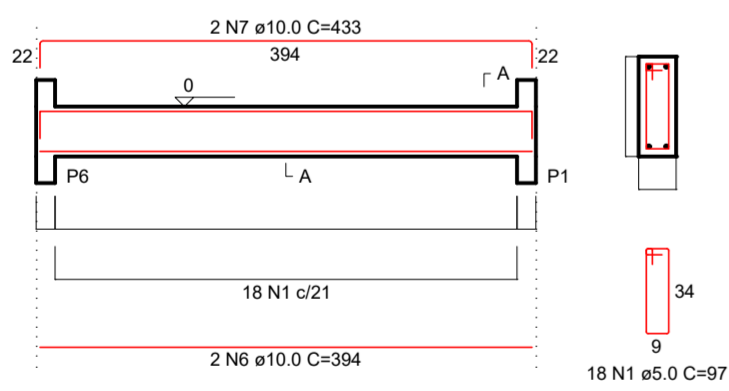
RESUMO DO AÇO

AÇO	DIAM (mm)	C.TOTAL (m)	QUANT + 0% (Barras)	PESO + 0% (kg)
CA50	10.0	206.9	18	127.6
CA60	5.0	219.2	-	33.8
PESO TOTAL (kg)				
CA50				127.6
CA60				33.8

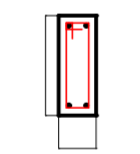
Volume de concreto (C-25) = 2.73 m³
Área de forma = 43.23 m²

V3

ESC 1:50

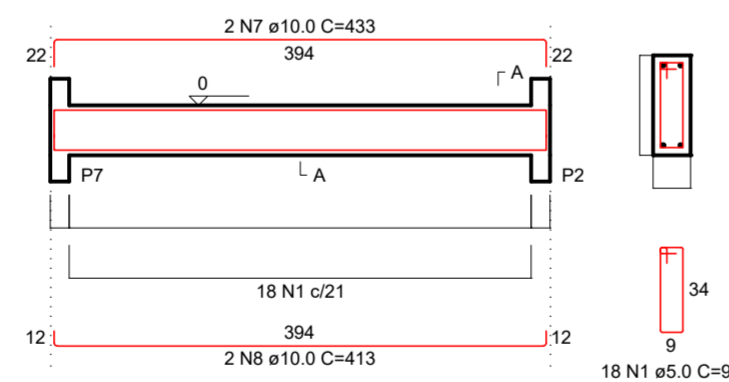


SEÇÃO A-A

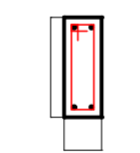


V4

ESC 1:50

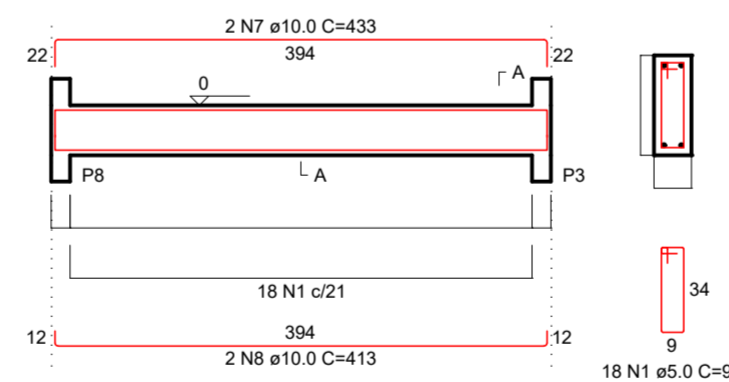


SEÇÃO A-A

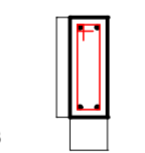


V5

ESC 1:50

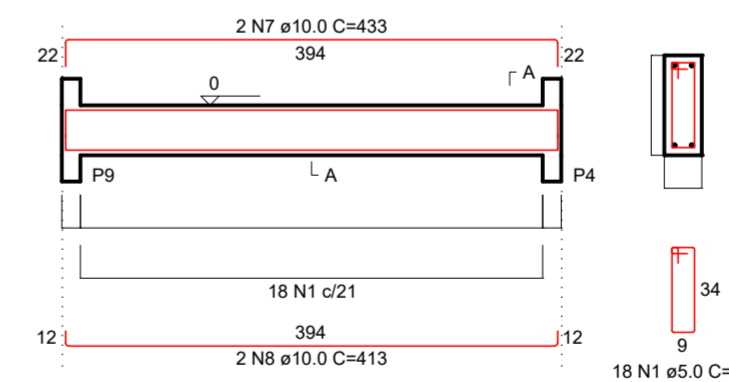


SEÇÃO A-A

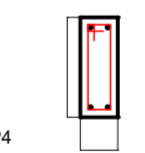


V6

ESC 1:50

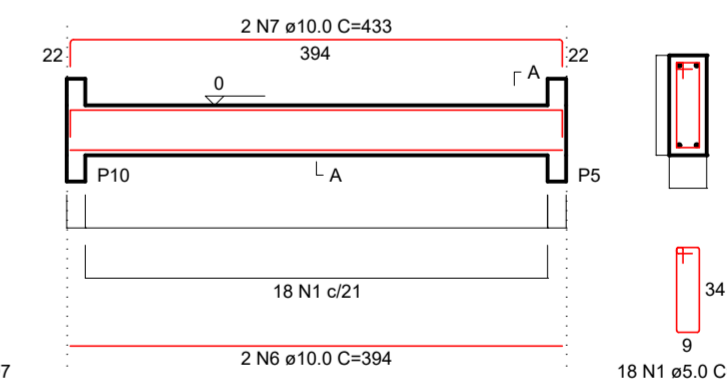


SEÇÃO A-A

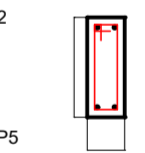


V7

ESC 1:50



SEÇÃO A-A



OBRA/SERVIÇO: OBRAS COMPLEMENTARES EM PRÉDIO INDUSTRIAL EM TAQUARI/RS

ENDEREÇO: Rua Farrapos, Pinheiros, Taquari/RS

TÍTULO: Projeto Estrutural



PROPRIETÁRIO:
PREFEITURA DE TAQUARI
RESPONSÁVEL TÉCNICO PELO PROJETO
FLÁVIO DE ANDRADE - ENG. CIVIL & ENG. SEGURANÇA- CREA RS111653

PRANCHA Nº:

EST
03/06

4.188,00 m²
ÁREA

S/ESCALA
ESCALA

Maior/2025
DATA

0
REVISÃO