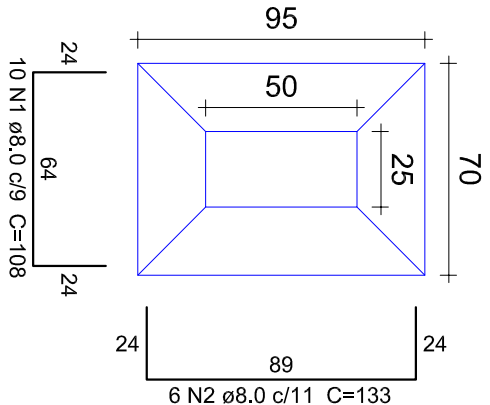
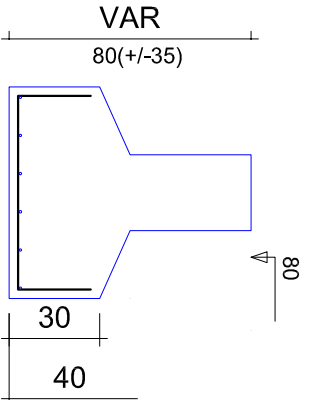


S1
PLANTA
ESC 1:25

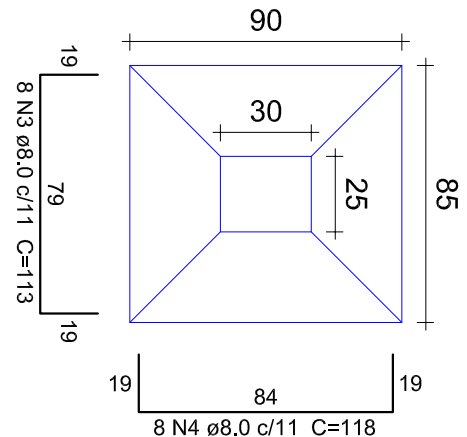


Solo compactado sobre a sapata
peso específico > 1600,00 kgf/m³

CORTE
ESC 1:25

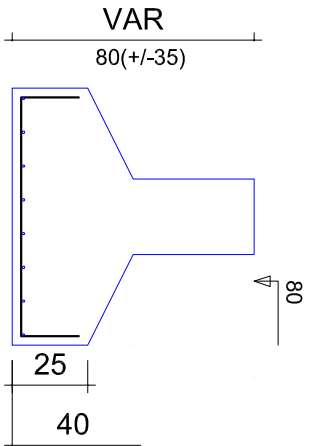


S6=S7=S8=S12
PLANTA
ESC 1:25

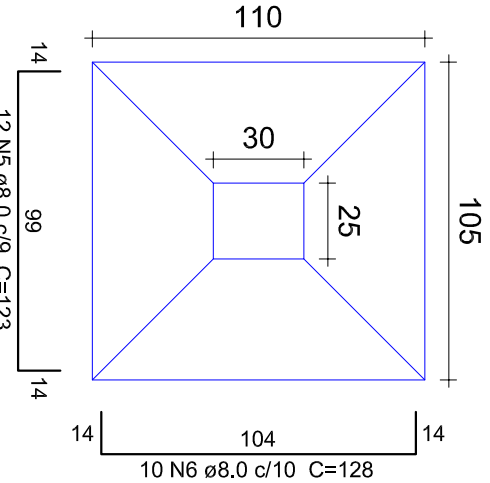


Solo compactado sobre a sapata
peso específico > 1600,00 kgf/m³

CORTE
ESC 1:25

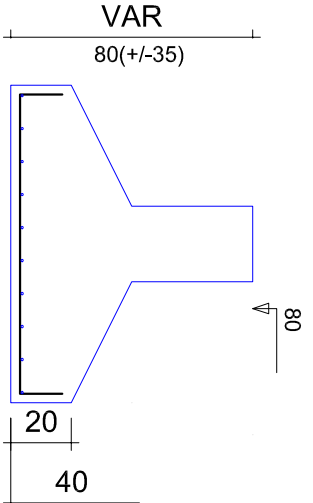


S9=S10=S11
PLANTA
ESC 1:25

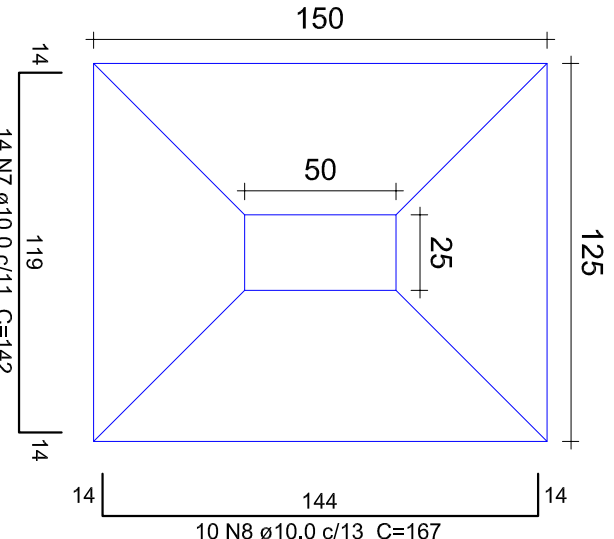


Solo compactado sobre a sapata
peso específico > 1600,00 kgf/m³

CORTE
ESC 1:25

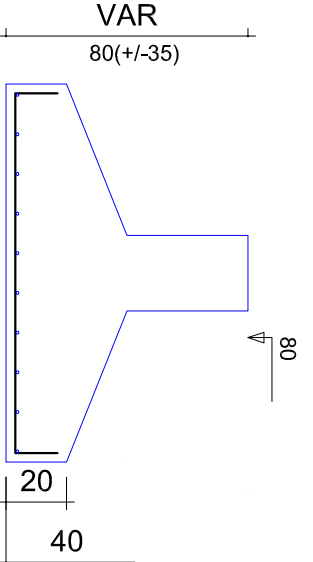


S5
PLANTA
ESC 1:25

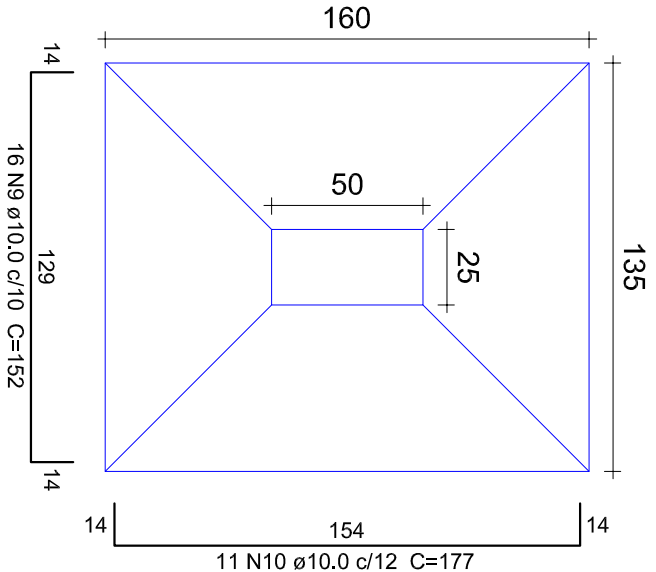


Solo compactado sobre a sapata
peso específico > 1600,00 kgf/m³

CORTE
ESC 1:25

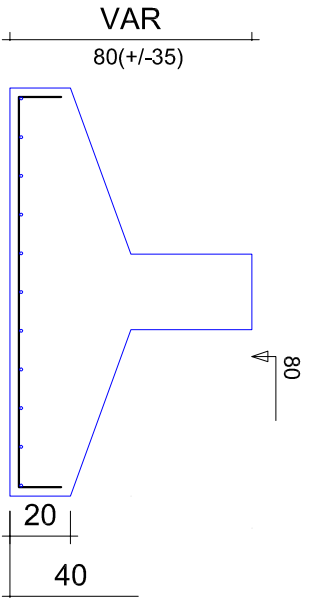


S2=S3=S4
PLANTA
ESC 1:25



Solo compactado sobre a sapata
peso específico > 1600,00 kgf/m³

CORTE
ESC 1:25



| ACO | N | DIAM (mm) | QUANT (Barras) | UNIT (cm) | C.TOTAL (cm) |
|------|----|-----------|----------------|-----------|--------------|
| CA50 | 1 | 8,0 | 10 | 108 | 1080 |
| | 2 | 8,0 | 6 | 133 | 798 |
| | 3 | 8,0 | 32 | 118 | 3616 |
| | 4 | 8,0 | 32 | 376 | 3776 |
| | 5 | 8,0 | 36 | 123 | 4428 |
| | 6 | 8,0 | 30 | 128 | 3840 |
| | 7 | 10,0 | 14 | 142 | 1988 |
| | 8 | 10,0 | 10 | 167 | 1670 |
| | 9 | 10,0 | 48 | 152 | 7296 |
| | 10 | 10,0 | 33 | 177 | 5841 |

Resumo do aço

| ACO | DIAM (mm) | C.TOTAL (m) | PESO + 10 % (kg) |
|-----------------|-----------|-------------|------------------|
| CA50 | 8,0 | 175,4 | 76,1 |
| | 10,0 | 168 | 113,9 |
| PESO TOTAL (kg) | | | |
| CA50 | | | 190 |

Volume de concreto (C=20) = 4,61 m³
Área de forma = 11,71 m²

Relação do aço

S1 3xS2 4xS12 S5

ESTRUTURAL - AMPLIAÇÃO GINASIO LAURENTINO MACHADO

LOCALIDADE DE LAURENTINO MACHADO - MUNICÍPIO DE TIO HUGO - RS

PROPRIETÁRIO:

RESPONSÁVEL TÉCNICO:



PREFEITURA MUNICIPAL DE TIO HUGO

JEAN BERARDI MANICA
ENG° CIVIL CREAR-RS 133.545-D

JEAN BERARDI MANICA
ENG° CIVIL CREAR-RS 133.545-D

ÁREA:

140,00 m²

ESCALA:

1/50

PROJETO:

FERRAGEM DAS SAPATAS

DATA:

DEZ/2016

PRANCHA:

E02