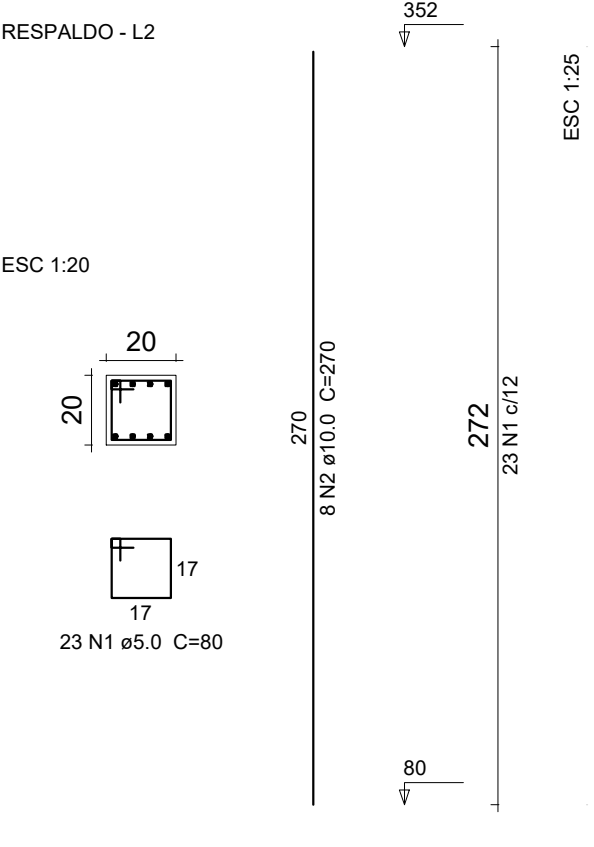
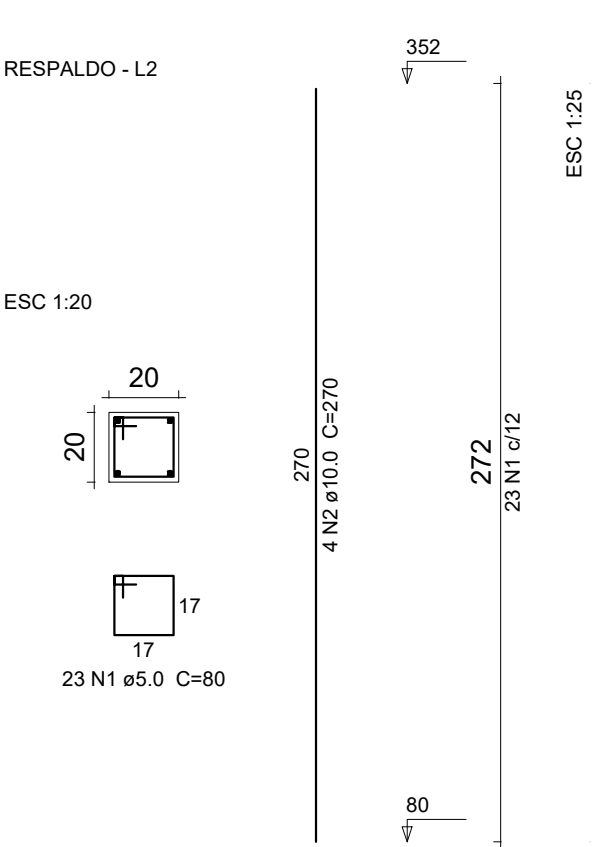
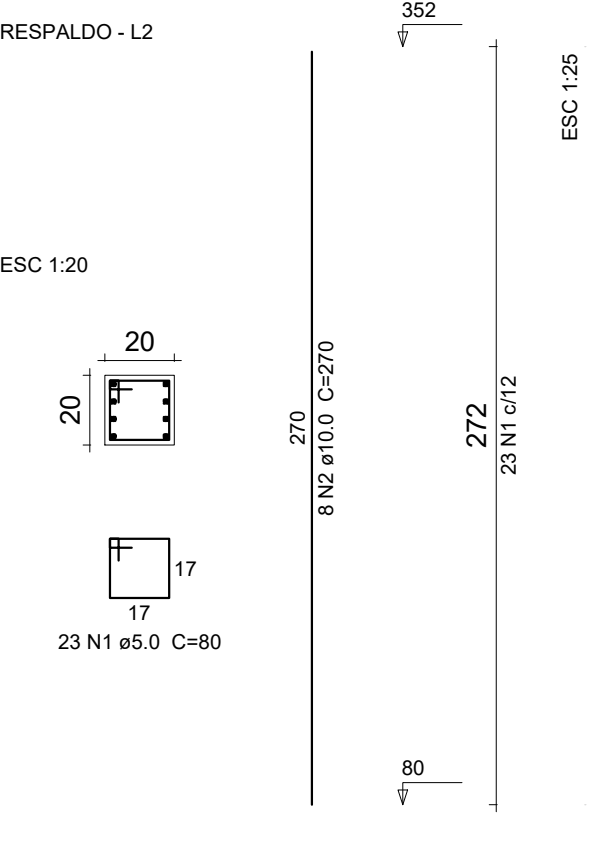


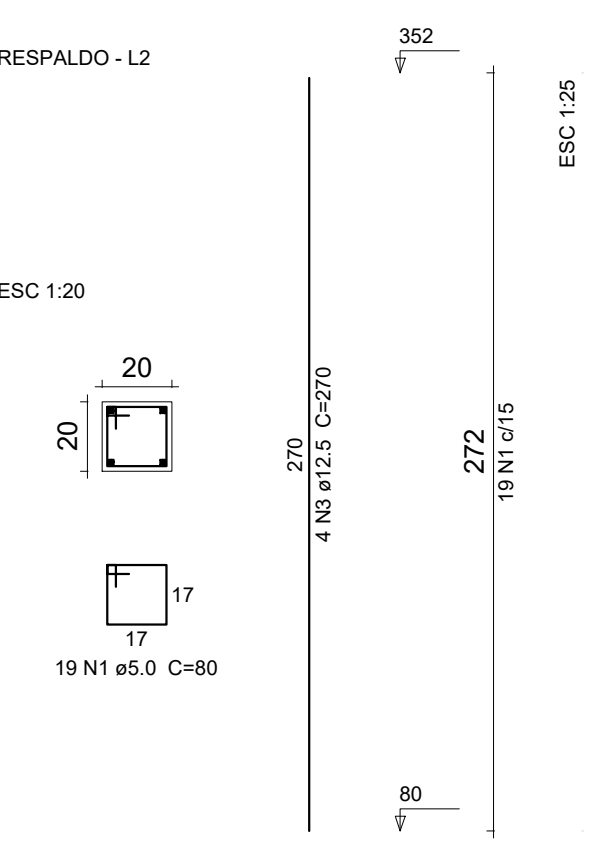
P1=P2=P3=P4=P5=P8=P9=P10=P11=P12=P14 P13  
=P15=P16=P17=P18=P19=P20=P21=P22=P23



P6



P7



Relação do aço					
20xP1 P13		P6		P7	
AÇO	N	DIAM (mm)	QUANT (Barras)	UNIT (cm)	C.TOTAL (cm)
CA60	1	5.0	525	80	42000
CA50	2	10.0	96	270	25920
	3	12.5	4	270	1080


Resumo do aço			
AÇO	DIAM (mm)	C.TOTAL (m)	PESO + 10 % (kg)
CA50	10.0	259.2	175.8
	12.5	10.8	11.4
CA60	5.0	420	71.2
PESO TOTAL (kg)			
CA50	187.2		
CA60	71.2		

Volume de concreto (C-25) = 2.5 m³  
Área de forma = 50.05 m²

AMPLIAÇÃO ESCOLA INFANTIL

RUA CUIABÁ- BAIRRO PROGRESSO - MUNICÍPIO DE TIO HUGO - RS

PROPRIETÁRIO:



PREFEITURA MUNICIPAL DE TIO HUGO

RESPONSÁVEL TÉCNICO:

JEAN BERARDI MANICA

ENG° CIVIL CREA-RS 133.545-D

DESENHO:

Jean Berardi

ÁREA:

240.00 m²

ESCALA:

1/50

PROJETO:

FERRAGEM  
PILARES

DATA:

Agosto/2017

PRANCHA:

E-07