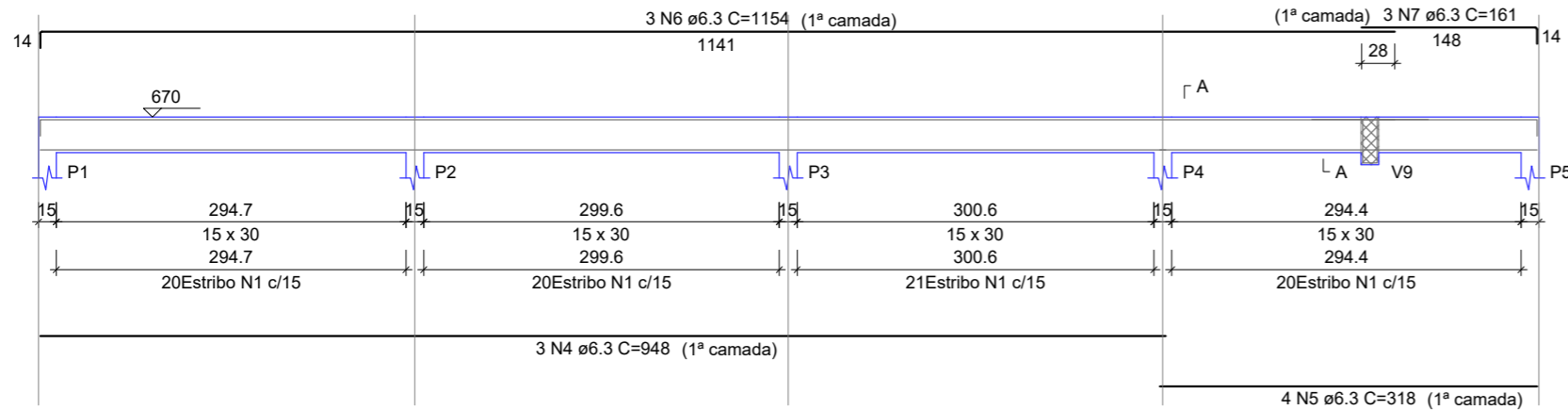


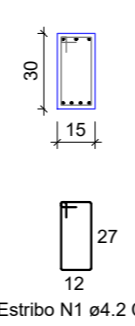
V1 (15 x 30)

ESC 1:50



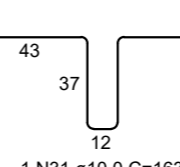
SEÇÃO A-A

ESC 1:25



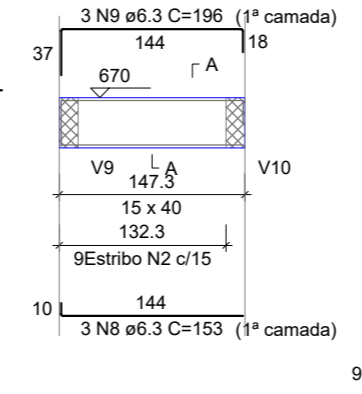
SUSPENSÃO V9

ESC 1:25



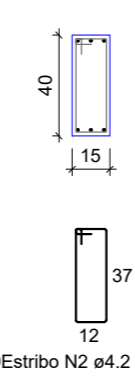
V2 (15 x 40)

ESC 1:50



SEÇÃO A-A

ESC 1:25

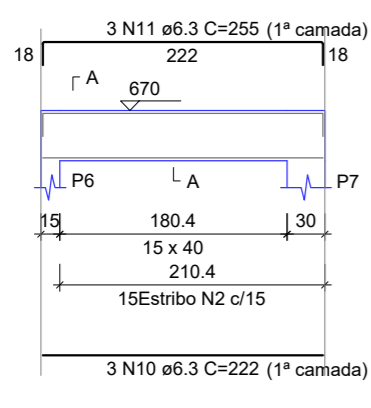


RELAÇÃO DO AÇO

AÇO	N	DIAM (mm)	QUANT	C.UNIT (cm)	C.TOTAL (cm)
V1					
V4					
V7					
V8					
V10					
V3					
V6					
V9					
CA60	1	4.2	81	89	7209
	2	4.2	274	109	29866
	3	4.2	6	123	738
CA50	4	6.3	5	948	4740
	5	6.3	4	318	1272
	6	6.3	3	1154	3462
	7	6.3	3	161	483
	8	6.3	3	153	459
	9	6.3	3	196	588
	10	6.3	3	222	666
	11	6.3	3	255	765
	12	6.3	1	318	318
	13	6.3	1	220	220
	14	6.3	4	523	2092
	15	6.3	1	581	581
	16	6.3	3	1199	3597
	17	6.3	3	337	1011
	18	6.3	18	396	7128
	19	6.3	6	429	2574
	20	6.3	4	428	1712
	21	6.3	4	429	1716
	22	6.3	1	138	138
	23	6.3	3	427	1281
	24	6.3	4	52	208
	25	6.3	3	170	510
	26	6.3	3	234	702
	27	6.3	3	258	774
	28	8.0	3	39	117
	29	8.0	1	191	191
	30	8.0	2	266	532
	31	10.0	1	163	163

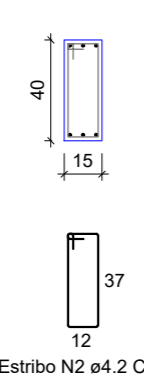
V3 (15 x 40)

ESC 1:50



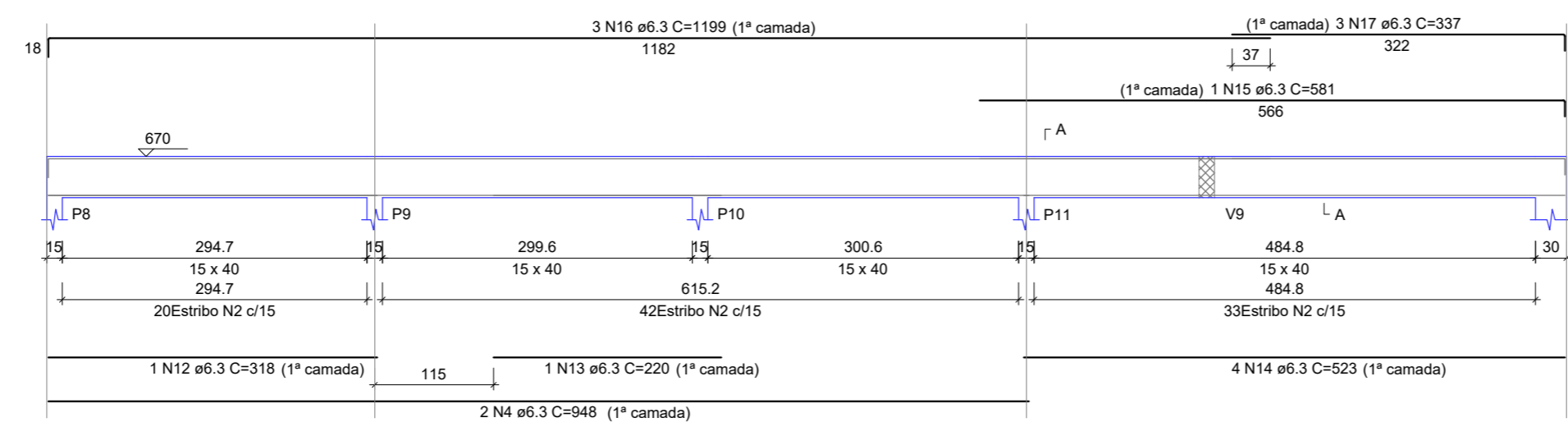
SEÇÃO A-A

ESC 1:25



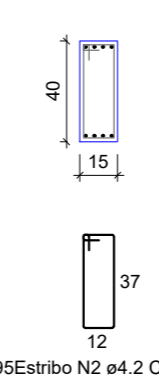
V4 (15 x 40)

ESC 1:50



SEÇÃO A-A

ESC 1:25



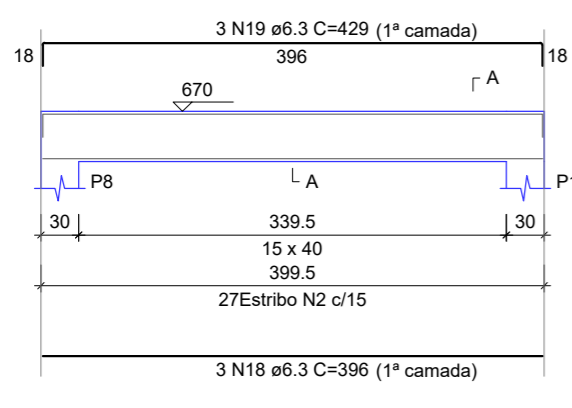
RESUMO DO AÇO

AÇO	DIAM (mm)	C.TOTAL (m)	QUANT + 10% (Barras)	PESO + 10% (kg)
CA50	6.3	370	34	99.6
	8.0	8.4	1	3.6
	10.0	1.6	1	1.1
CA60	4.2	378.1	35	45.2
PESO TOTAL (kg)				
CA50		104.3		
CA60		45.2		

Volume de concreto (C-35) = 2.83 m³
 Área de forma = 50.16 m²

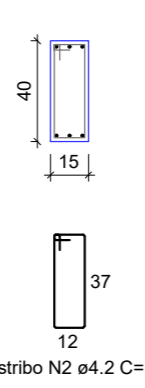
V5 (15 x 40)

ESC 1:50



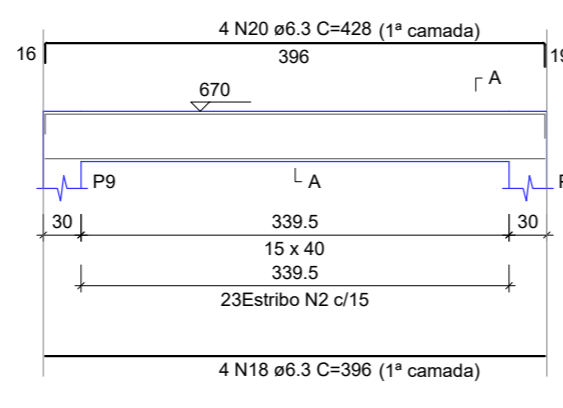
SEÇÃO A-A

ESC 1:25



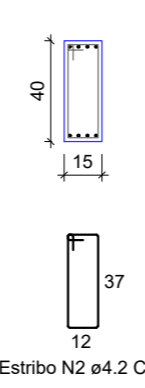
V6 (15 x 40)

ESC 1:50



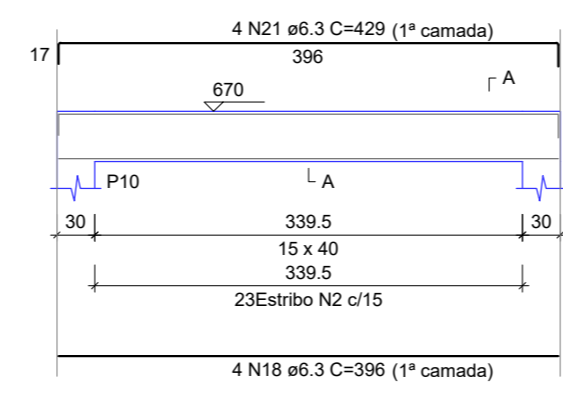
SEÇÃO A-A

ESC 1:25



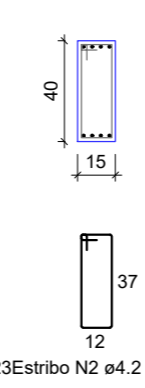
V7 (15 x 40)

ESC 1:50



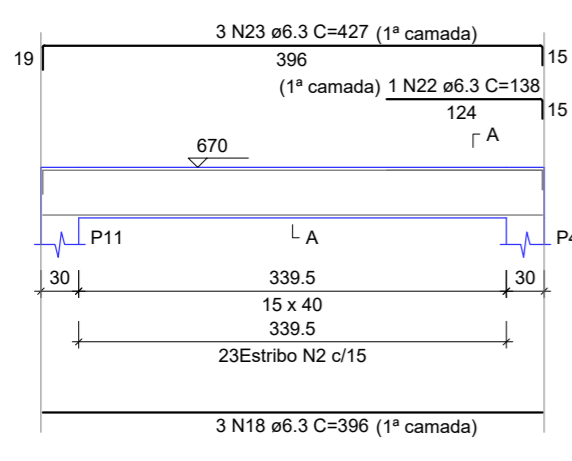
SEÇÃO A-A

ESC 1:25



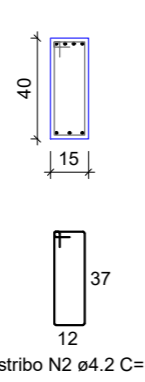
V8 (15 x 40)

ESC 1:50



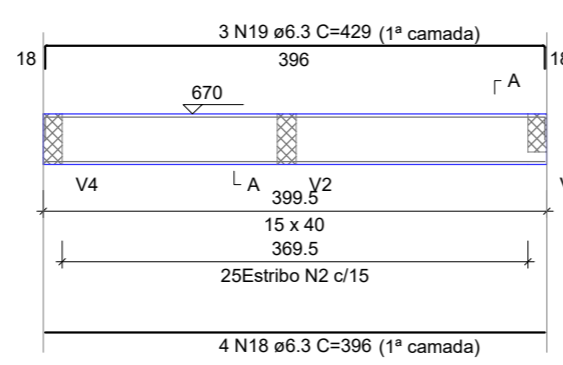
SEÇÃO A-A

ESC 1:25



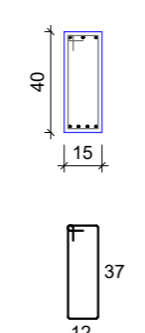
V9 (15 x 40)

ESC 1:50



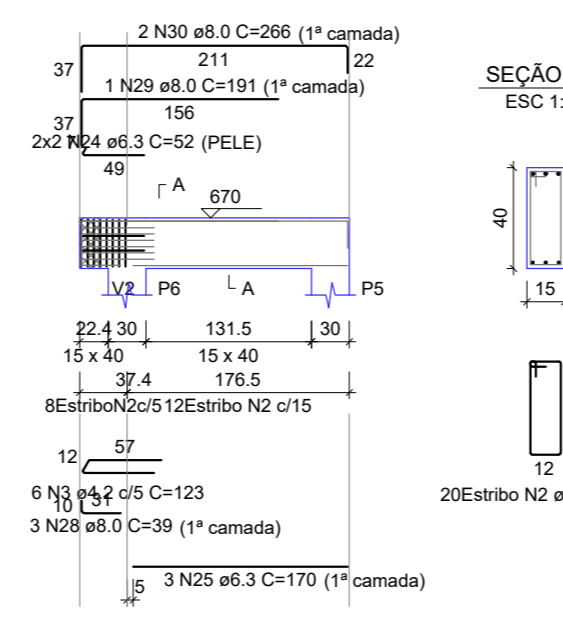
SEÇÃO A-A

ESC 1:25



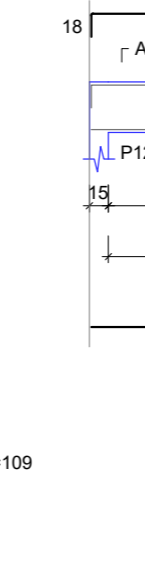
V10 (15 x 40)

ESC 1:50



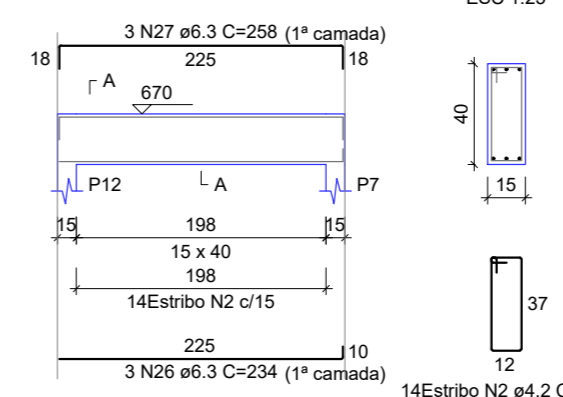
SEÇÃO A-A

ESC 1:25



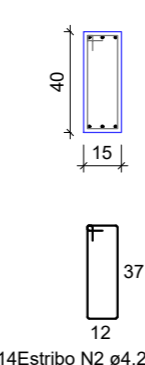
V11 (15 x 40)

ESC 1:50




SEÇÃO A-A

ESC 1:25



AMPLIAÇÃO POSTO DE SAÚDE

MUNICÍPIO DE TIO HUGO - RS

PROPRIETÁRIO:  PREFEITURA MUNICIPAL DE TIO HUGO	RESPONSÁVEL TÉCNICO: JEAN BERARDI MANICA ENG° CIVIL CREA-RS 133.545-D
DESENHO: JEAN BERARDI MANICA ENG° CIVIL CREA-RS 133.545-D	PROJETO ESTRUTURAL: VIGAS FORRO
DATA: MAIO/2023	PRANCHA: 12
ÁREA: 55,25 m²	ESCALA: 1/75